

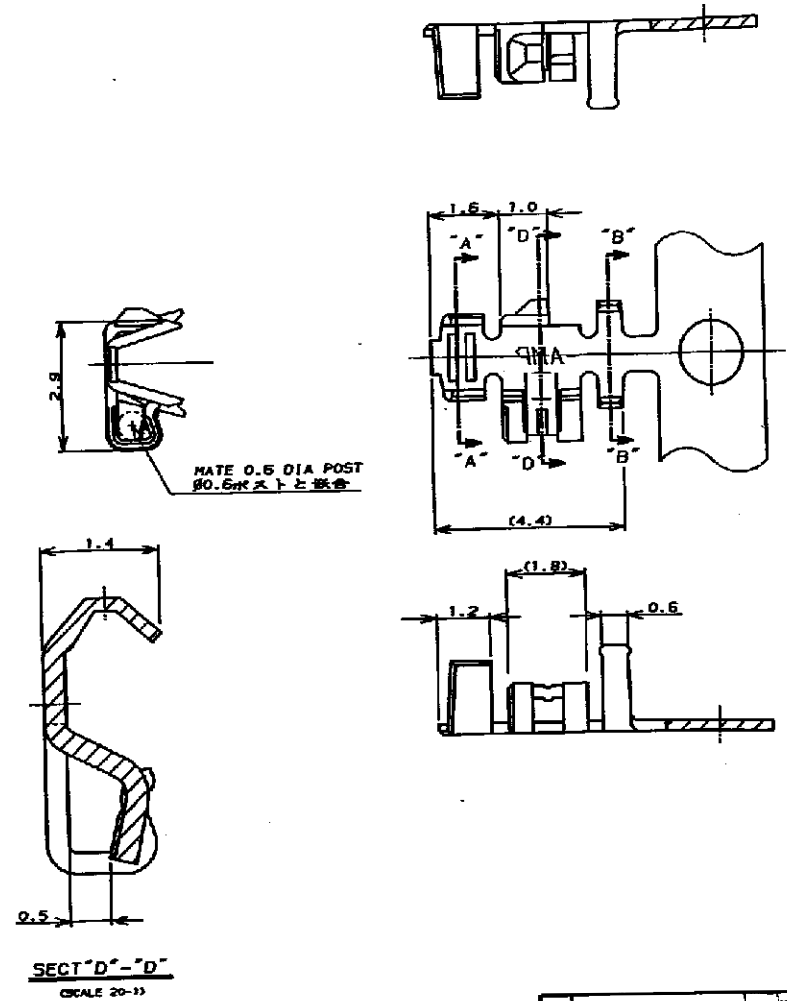
NUMBER C-175102



METRIC

DIMENSIONS IN MILLIMETERS. DO NOT SCALE PRINT.

PRINTED BY



- 注:
1. 使用ハウジングは型番 175778
  2. 製品規格 : 108-5297
  3. 取付適用規格 : 114-5140

- NOTES:
1. USE HOUSING ; P/N 175778
  2. PRODUCT SPEC ; 108-5297
  3. APPLICATION SPEC ; 114-5140

OBSOLETE	NICKEL PLATED PHOSPHOR BRONZE (ONLY CONTACT AREA GOLD PLT. 0.2μ) 銅青銅にニッケル下地、接触部に金めっき0.2μ	1-175102-2
	PRE TINNED PHOSPHOR BRONZE (0.25μ) 鍍めつき浴鍍青銅 (0.25μ)	1-175102-1
	L/P CONTACT L/P端子	PART NO. 型番



MTR RANGE 0.12 -0.35mm <sup>2</sup> (AWG26-22)	INSULATION DIA 1.0-1.5mm	NAME 圧着タイプ リセコンタクト
MATERIAL SEE TABLE 表参照	FINISH SEE TABLE 表参照	CRIMP TYPE RECEPTACLE CONTACT (AMP CT CONNECTOR 2mm PITCH)
DR. T. NAKAMURA 4/6/80	APP. T. NAKAMURA 4/9/80	GENERAL TOLERANCE
LTR REVISION RECORD		SIZE LOC NUMBER B J C-175102
DR. CHK. DATE		SCALE 10-1
CHK. S. KIKUCHI		REV. H2
		SHEET 1 OF 2

CUSTOMER DRAWING

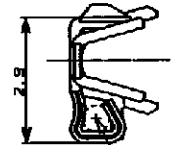
NUMBER C-175102



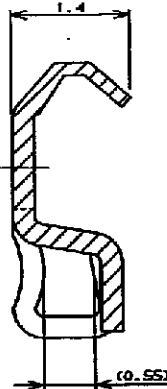
METRIC

DIMENSIONS IN MILLIMETERS. DO NOT SCALE PRINT

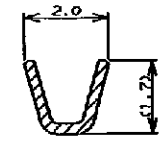
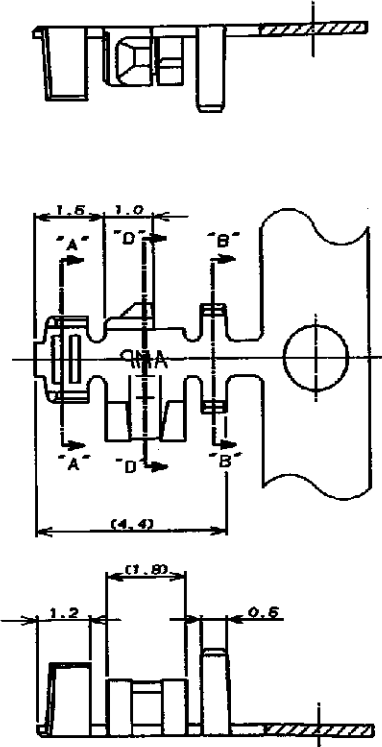
PRINT DIST



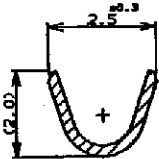
MATE 0.5 DIA POST  
0.5mmポストと嵌合



SECT "D"-"D"  
(SCALE 20-1)



SECT "A"-"A"



SECT "B"-"B"

- 注:
1. 使用ハウジングは型番 175778
  2. 製品規格: 108-5297
  3. 取付適用規格: 114-5140

- NOTES:
1. USE HOUSING ; P/N 175778
  2. PRODUCT SPEC ; 108-5297
  3. APPLICATION SPEC ; 114-5140

INACTIVE		NICKEL PLATED PHOSPHOR BRONZE (ONLY CONTACT AREA GOLD PLY: 0.2μ) 鍍金面にニッケル下地、接触部に金めっき0.2μ	175102-2
	175161-1	PRE TINNED PHOSPHOR BRONZE (0.25μ) 鍍めつき無鉛青銅 (厚膜0.25)	175102-1
	L/P CONTACT L/P端子	MATERIAL & FINISH 材質	PART NO. 型番



LTR		REVISION RECORD	DR	CHK	DATE

WIRE RANGE 0.12 -0.35mm <sup>2</sup> (AWG26-32)	INSULATION DIA 1.0-1.5mm <sup>φ</sup>	NAME 圧着タイプ リセコンタクト CRIMP TYPE RECEPTACLE CONTACT (AMP CT CONNECTOR 2mm PITCH)
MATERIAL SEE TABLE 参考表	FINISH SEE TABLE 参考表	GENERAL TOLERANCE
DR. T. NAKAMURA 4/8/80	DE. T. NAKAMURA 4/8/80	SIZE B J
CHK. S. KIKUCHI	APP. S. KIKUCHI	LOC J
		NUMBER C-175102
		SCALE 10-1
		REV. H2
		SHEET 2 OF 2

CUSTOMER DRAWING

# Mouser Electronics

Authorized Distributor

Click to View Pricing, Inventory, Delivery & Lifecycle Information:

[TE Connectivity:](#)

[1-175102-1 \(MOUSER REEL\)](#) [1-175102-1 \(CUT STRIP\)](#)