

5

4

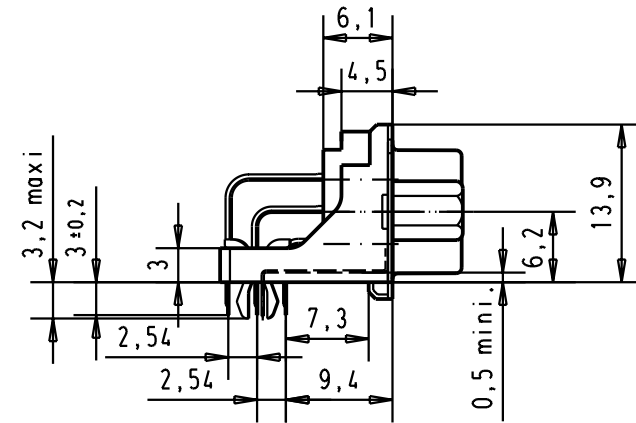
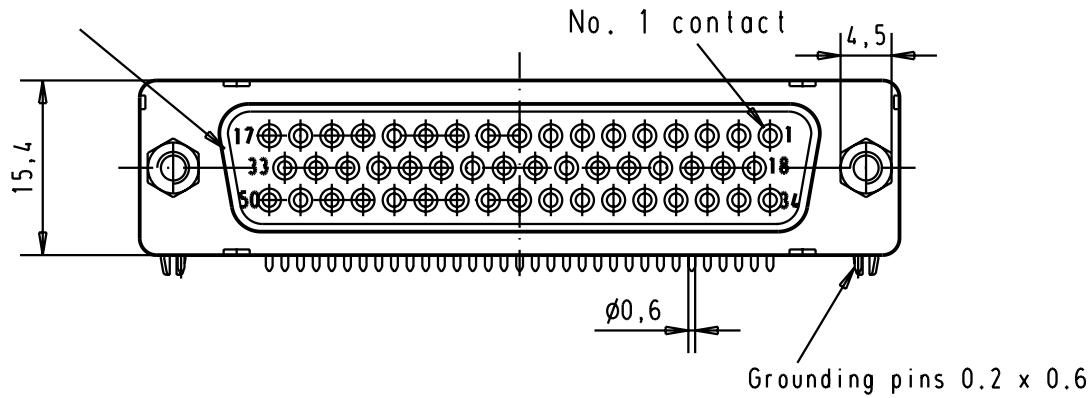
3

2

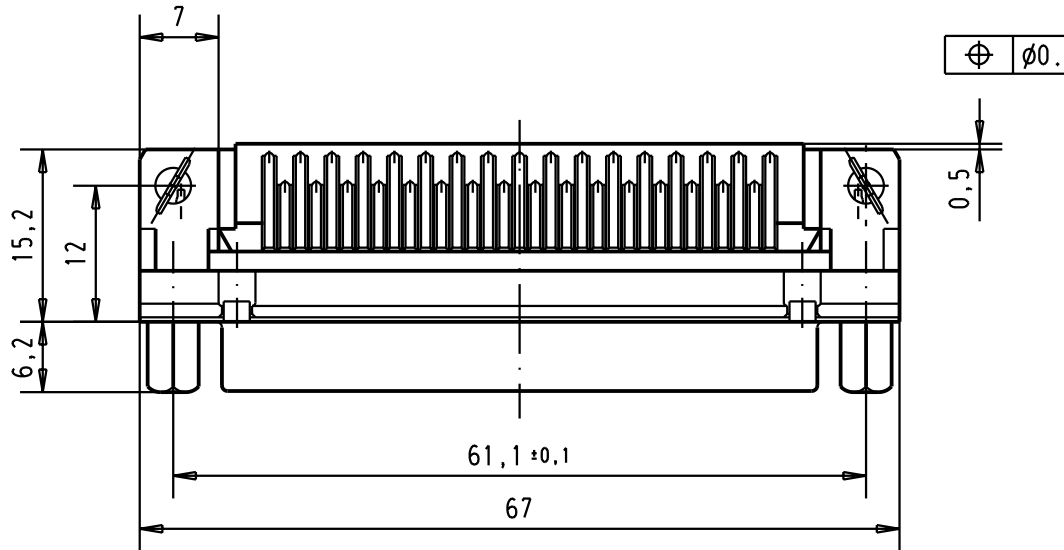
1

Mating face according to MIL-C-24308 / DIN 41 652 / CECC 75301-802

D

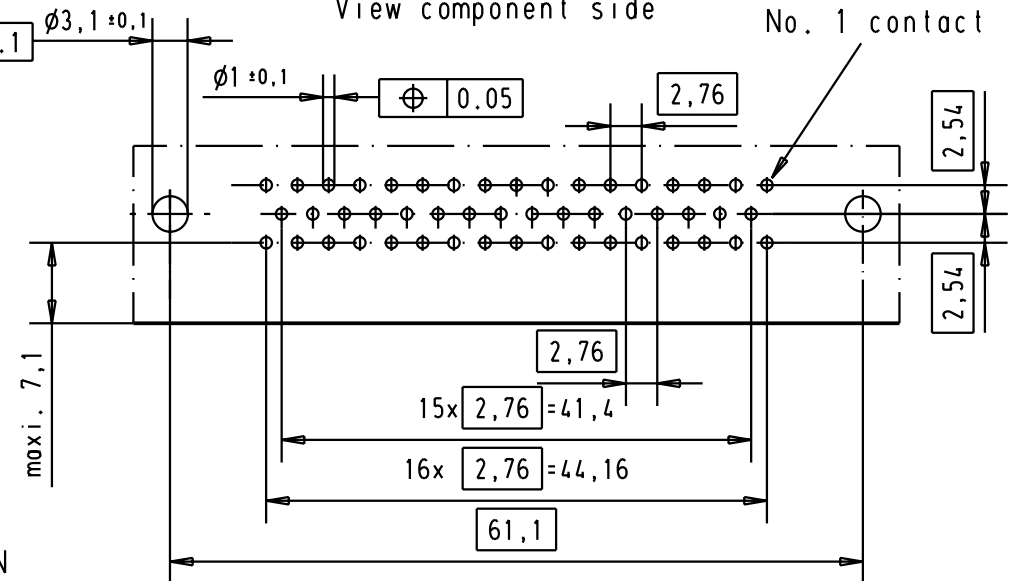


C



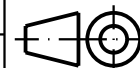
Mounting force on Printed board : 25 - 80 N

Printed board layout (1.6 ± 0.2 thick)
View component side



A

							Dat.	Name			
							Detail.	23-NOV-01	JB		
							Insp.				
							Stand.				
09 66 552 6617	4-40 UNC	2									
09 66 552 7617	4-40 UNC	3	31084	04/SEP/02	YT						
09 66 552 5617	4-40 UNC	0,76 µm Au	29733	23-NOV-01	JB						
Part number	screw-lock	Performance level	Mod.	Dat.	Name						



All Dim. in mm
Orig. Size DIN A 4

D-Sub female low profile
50 poles with solder pins,
screw-lock, board lock
and grounding pins

Maßstab/
Scale

1,5:1

HARTING EURL
F-95972 Paris



TB 09 66 552 X61x

Sub.

Blatt / Page

3

Mouser Electronics

Authorized Distributor

Click to View Pricing, Inventory, Delivery & Lifecycle Information:

HARTING:

[09665526617](#) [09665527617](#)