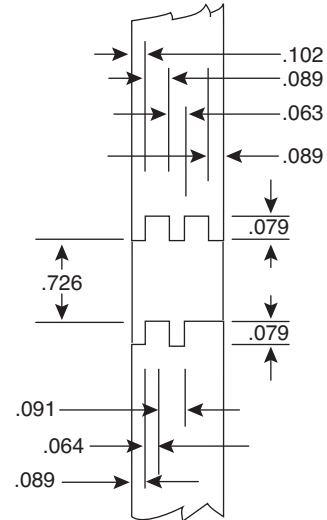
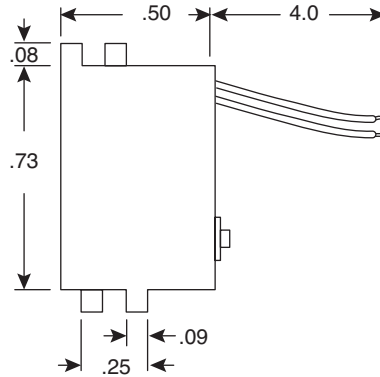
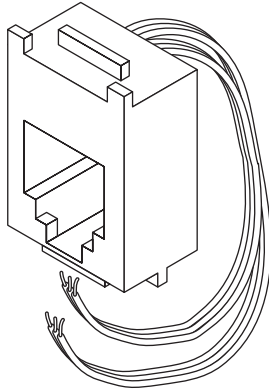


# Modular Jack

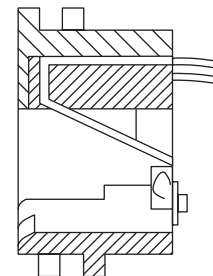
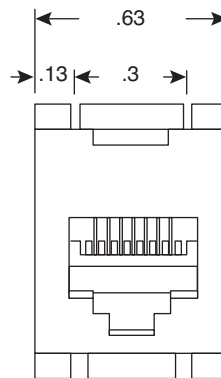
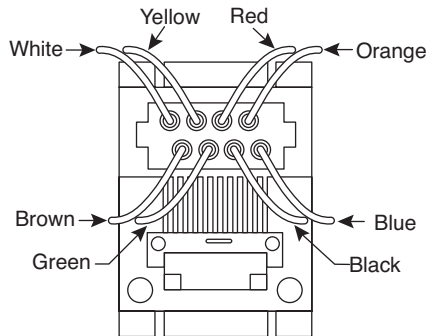
154-7641D, 154-7647, 154-UL641D

**KOBI**CONN

Modular Jack



Panel cut out



Dimensions: In.

SPECIFICATIONS	
Wire Leads:	Phospher Bronze Alloy
Housing	ABS molding compound
Color:	Gray
Positions-Contacts:	8-8
Contacts:	6 Micron gold plate (154-7641D, 7647) 50 Micron gold plate (154-UL641D)
USOC Type:	RJ45
Western Electric Type:	641D
Wire Gauge:	26 AWG

Date Last Revised: 04/23/13

Available from Mouser Electronics  
1-800-346-6873  
www.mouser.com

KC-300083

154-7641D, 154-7647, 154-UL641D

# Mouser Electronics

Authorized Distributor

Click to View Pricing, Inventory, Delivery & Lifecycle Information:

[Kobiconn:](#)

[154-UL641D](#) [154-7647](#) [154-7641D](#)