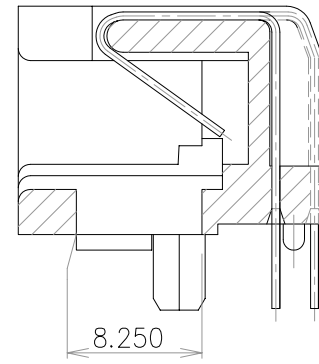
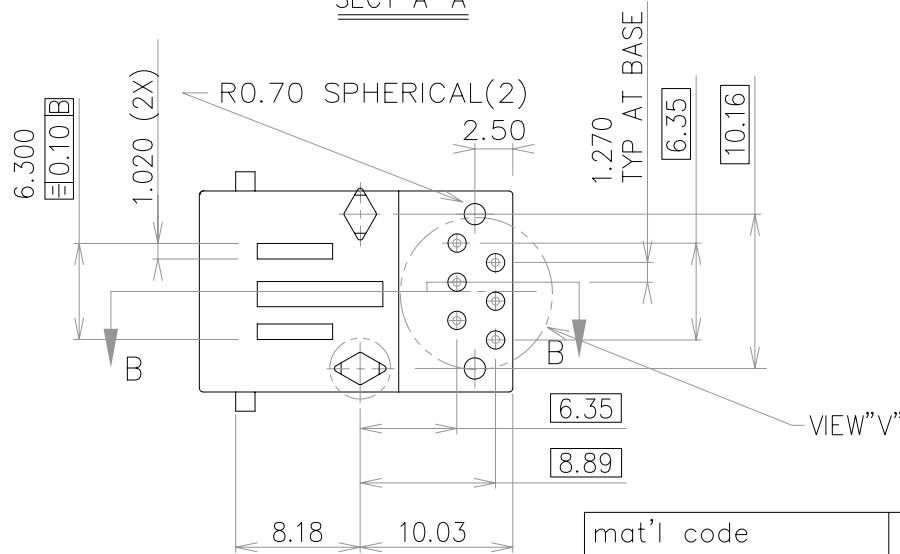
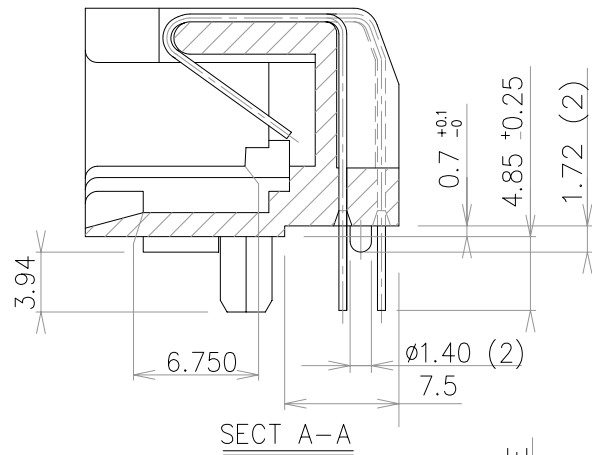
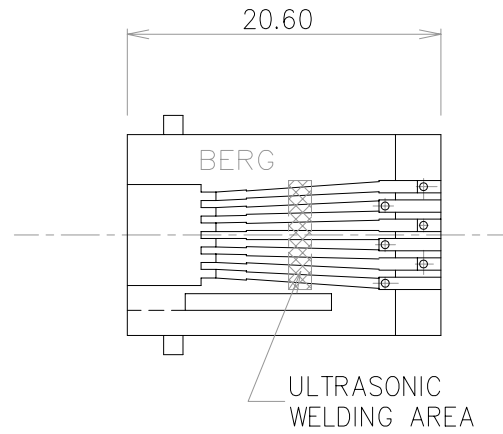
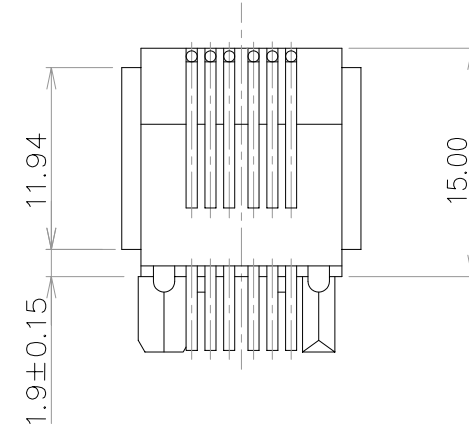


VIEW "W"

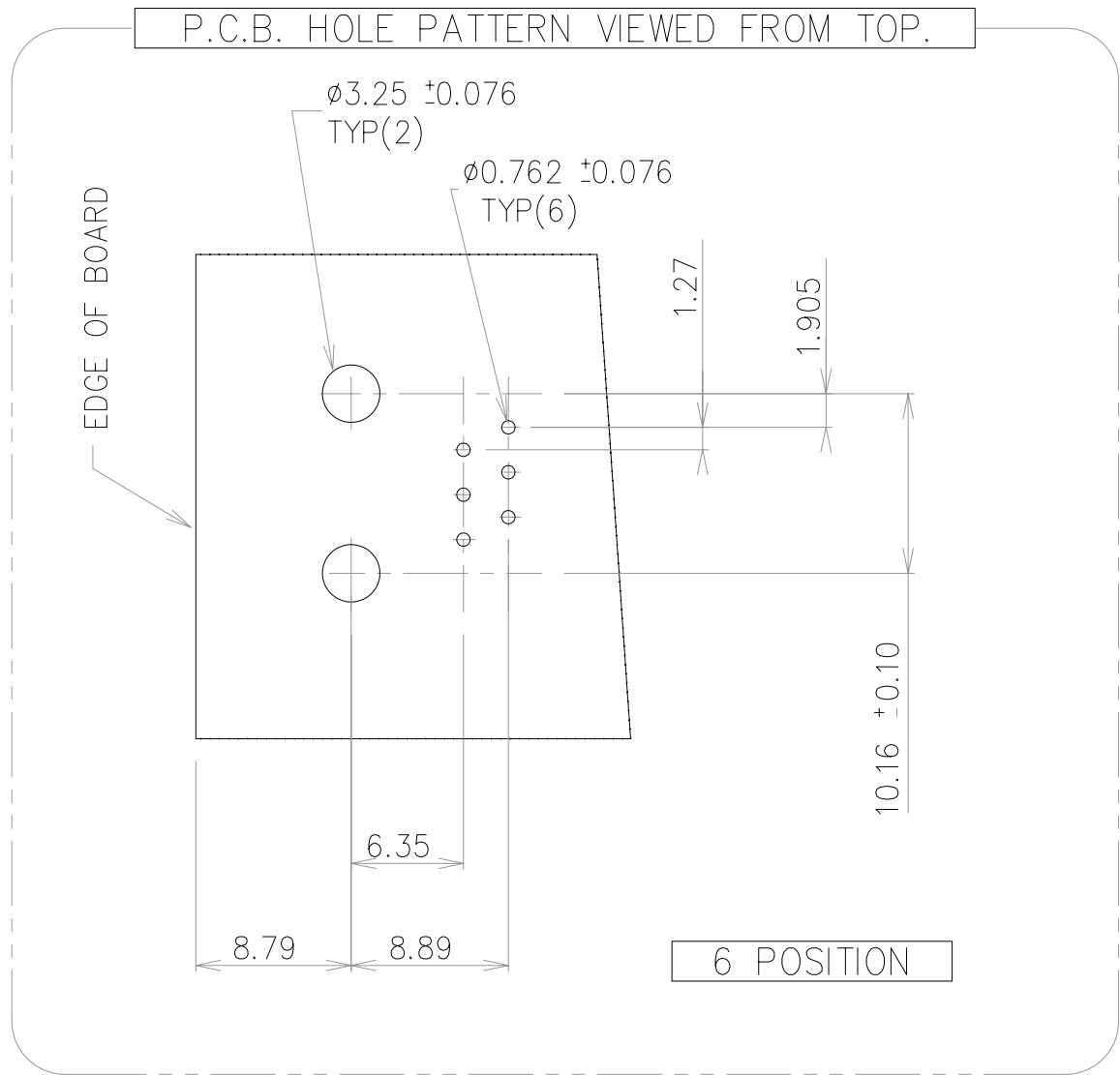


SECT B-B



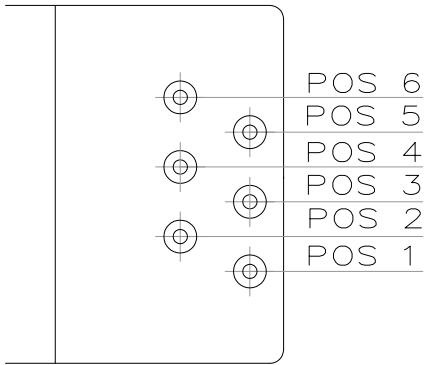
mat'l code				tolerance unless otherwise specified		CUSTOMER COPY	FCI www.fciconnect.com			
rev.	ecn no.	dr	date	linear	.0 ± 0.25	projection 	title SNAP-IN MODULAR JACK ASS'Y 6-POS OFF-SET OPENING			
A	T40014	-	-		.00 ± 0.13					
B	H40194	-	03/18/94	angles	.000± 0.05		product family size A3			
C	T70043	CL	01/16/97		± 2°					
D	T03-0443	WL	10/06/03	dr	KCHOU	01/26/94	unit mm/inch			
E	N05-0019	YS	01/27/05	enr	TONY CHIEN	01/26/94				
F	I09-0017	NPM	26/05/09	chr	NEBU PM	25/08/09	scale 2:1			
				appd	SUDHIR V	25/08/09				
sheet	revision	F	F							
index	sheet	1	2							

PRODUCT NUMBER	NUMSER OF POS.	LOADED POSITIONS	CONTACT PLATING
94729-002/-002LF	6	1,2,3,4,5,6	2μ"GOLD FLASH
94729-102/-102LF	6	1,2,3,4,5,6	30μ"GXT PLATED



NOTES:

1. RECOMMENDED P.C.B THICKNESS 1.60 MM
2. HOUSING MAT'L: POLYESTER 30% G.F,
COLOR: CREAM WHITE
3. CONTACTS: PHOS BRONZE ALLOY UNS-C51000,
Ø0.460mm ROUND WIRE
PLATING SEE TABLE.
- 4.THE PRODUCT MEETS EUROPEAN UNION DIRECTVES AND OTHER
COUNTRY REGULATIONS AS DESCRIBED IN GS-22-008
5. THE HOUSING WILL WITHSTAND EXPOSURE TO 260°C PEAK.
6. IF LF P/N PACKING MEETS GS-14-920 SPECIFICATION.



POSI NUMBER INDICATED (VIEW"V")

mat'l code				tolerance unless otherwise specified		CUSTOMER COPY	www.fciconnect.com			
rev.	ecn	no.	dr	date	linear	.0 ± 0.25 .00 ± 0.13 .000± 0.05	projection	title SNAP-IN MODULAR JACK ASS'Y 6-POS OFF-SET OPENING		
F					angles	± 2°				
					dr	KCHOU 01/26/94	unit	product family		code
					engr	TONY CHIEN 01/26/94	mm/inch	size	dwg no.	-
					chr	NEBU P.M 25/08/09	scale	A3	94729	sheet
					appd	SUDHIR V. 25/08/09				2 OF 2
sheet	revision	F	F							
index	sheet	1	2							

Mouser Electronics

Authorized Distributor

Click to View Pricing, Inventory, Delivery & Lifecycle Information:

[FCI / Amphenol:](#)

[94729-102LF](#)