

4

3

2

1

THIS DRAWING IS UNPUBLISHED.

RELEASED FOR PUBLICATION

© COPYRIGHT

ALL RIGHTS RESERVED.

LOC

DIST


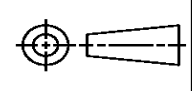
REVISIONS

P	LTR	DESCRIPTION	DATE	DWN	APVD
	B1	ECR-14-002338	18FEB2014	GK	HMR

REPLACED BY OCEAN STYLE APPLICATOR PART
NUMBER 2151379-1

FOR REPLACEMENT PARTS FOR APPLICATOR 1528384
REFER TO ADDITIONAL PAGE(S). SPARE PARTS KIT (IF LISTED)
WILL REMAIN AVAILABLE.

THE REPLACEMENT OCEAN STYLE APPLICATOR HAS THE
SAME TERMINATOR/PRESS INTERFACE AS APPLICATOR
1528384

THIS DRAWING IS A CONTROLLED DOCUMENT.		DWN GOPALAKRISHNA HV		 TE Connectivity			
DIMENSIONS:		CHK RAGHAVENDRA					
		APVD RAGHAVENDRA		NAME FINE ADJ SIDE FD HD-I APPL			
		PRODUCT SPEC					
		APPLICATION SPEC					
MATERIAL		WEIGHT		SIZE A3	CAGE CODE	DRAWING NO C- 1528384	RESTRICTED TO
FINISH		CUSTOMER DRAWING		SCALE		SHEET 1 OF 2	REV B1

DRAWING MADE IN THIRD ANGLE PROJECTION

PART NUMBER	REV	FIRST USED	TERMINATOR	FEED TYPE	DESCRIPTION
1528384-1	B	-	LEADMAKER	MECH POST FEED	CUTS CARRIER
1528384-2	B	-	BENCH	MECH PRE FEED	CUTS CARRIER
1528384-6	B	-	LEADMAKER	MECH POST FEED	CONTINUOUS CARRIER
7-1528384-1	B	-	LEADMAKER	MECH POST FEED	-1 AND SPARE PARTS
7-1528384-2	B	-	BENCH	MECH PRE FEED	-2 AND SPARE PARTS
7-1528384-6	B	-	LEADMAKER	MECH POST FEED	-6 AND SPARE PARTS
7-1528384-7	A	-	-	-	SPARE PARTS KIT

CRIMP DATA AMP TERMINAL AMP CRIMP SPECS

TERMINAL NAME: 2.8 FASTIN-FASTON TAB

CRIMP	SIZE	TYPE	RANGE
WIRE	2.03 [.080 IN]	F	0.50mm ² - 1.00mm ²
INSUL	2.79 [.110 IN]	OV	1.40-2.30 [.055-.090 IN]

WIRE STRIP LENGTH

4.00-4.60 [.157-.181 IN]

APPL INSTRUCTION

408-8322 & 408-8490

TERMINAL

APPL SPEC

114-18014

FEED

13.49 [.531 IN]

TERMINALS APPLIED

928930	-	-	-	-
-	-	-	-	-
-	-	-	-	-
-	-	-	-	-
-	-	-	-	-
-	-	-	-	-
-	-	-	-	-
-	-	-	-	-
-	-	-	-	-
-	-	-	-	-

WIRE SIZE

mm² AWG

CRIMP HEIGHT

REF SETTING

1.00mm ²	1.56 ±0.05 [.061 ±.002 IN]	C0
0.75mm ²	1.47 ±0.05 [.058 ±.002 IN]	C6
0.50mm ²	1.38 ±0.05 [.054 ±.002 IN]	D3

1. RECOMMENDED SPARE PARTS.
2.

GREASE RAM, CAM, CAM FOLLOWER AND FEED ROD LIGHTLY.
3.

LUBRICATE DAILY PER THE APPLICATOR INSTRUCTION SHEET SUPPLIED WITH THE APPLICATOR.
4.

CUT TO LENGTH AT ASSY.

VIEW B ROTATED 180°

POST FEED 40 mm STROKE	POST FEED 30 mm STROKE	PRE FEED 30 mm STROKE	PRE FEED 40 mm STROKE

LOC

A

DIST

66

AMP 1756 REV 3-92

25-AUG-06

12:19:48

b8420

8

7

6

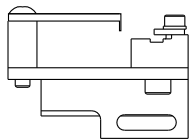
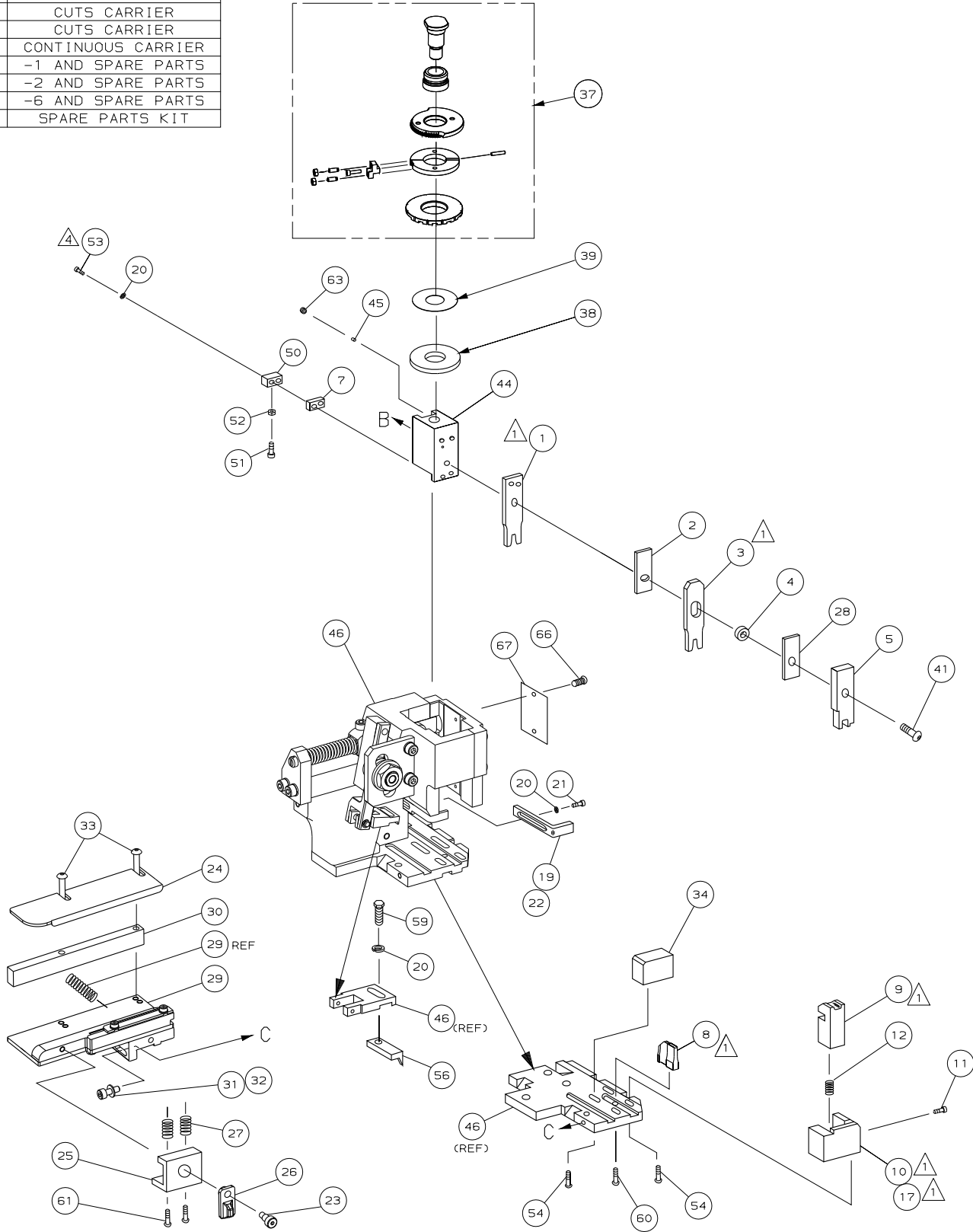
5

4

3

*** WARNING:**

ON INSTALLATION, SET WIRE DISC TO LARGEST WIRE SIZE SETTING. USE OF SETTINGS BELOW MIN REQUIRED CRIMP HEIGHT SETTING WILL CAUSE DAMAGE TO CRIMP TOOLING.



ECR-06-020157

SEE ECN 015A-0430-04

TM

MC

AUG06

MAY04

REVISION RECORD

APP

DATE

DO NOT SCALE PRINT.

TOLERANCES UNLESS OTHERWISE SPECIFIED:

1 PLC DEC ±-

2 PLC DEC ±-

3 PLC DEC ±-

ANGLES ±-

SURF TEXTURE:

REMOVE BURRS, BREAK SHARP EDGES RO.36 MAX

DR

CHK

NAME

SCALE

DATE

1528384

1 of 1

REV

B

29APR04

29APR04

26-05-04

M. CLIFFORD

AMP

Tyco Electronics

Harrisburg, PA 17105-3608

MACHINE REF

HD-I APPL

CUSTOMER AND ASSEMBLY DRAWING

RESTRICTED TO

-	1	1	1	1	1	1	1528384	PRINT, APPLICATOR LOG SHEET	73
-	1	1	1	1	1	1	1338705-3	DOCUMENTATION PACKAGE	71
-	-	-	-	-	-	-	-	-	70
-	-	-	-	-	-	-	-	-	69
-	-	-	-	-	-	-	-	-	68
-	1	1	1	1	1	1	461264-5	PLATE, IDENTIFICATION	67
-	2	2	2	2	2	2	21017-2	SCR, DRIVE (#2x.19) ID PLATE	66
-	-	-	-	-	-	-	-	-	65
-	1	1	1	1	1	1	3-18031-0	SCR, SKT SET (M6X6) RAM	64
-	-	-	-	-	-	-	-	-	63
-	2	2	2	2	2	2	2-18032-5	SCR, SOC SET (M5X20) DRAG	62
-	1	1	1	1	1	1	18024-7	SCR, BHC (M4X10) ANVIL	61
-	1	1	1	1	1	1	5-18022-2	SCR, HEX (M4X8) FEED FINGER	60
-	-	-	-	-	-	-	-	-	59
-	-	-	-	-	-	-	-	-	58
-	-	-	-	-	-	-	-	-	57
-	1	1	1	1	1	1	1338685-1	PAWL, FEED	56
-	-	-	-	-	-	-	-	-	55
-	4	4	4	4	4	4	18024-8	SCR, BHC (M4X12) SHEAR HOLDER	54
-	2	2	2	2	2	2	1-18023-4	SCR, SHC (M4X20) TERM HLD DWN	53
-	1	1	1	1	1	1	18030-1	NUT, HEX (M3) HOLD DOWN	52
-	1	1	1	1	1	1	811242-5	BUMPER, HOLDDOWN	51
-	1	1	1	1	1	1	690753-2	SPACER, TONKER	50
-	1	1	1	1	1	1	18024-3	SCR, BHC (M3X10) CAM	49
-	-	-	-	-	-	-	-	-	48
-	1	-	1	-	-	-	1338675-1	CAM, PRE FEED 30 & 40 mm ST	47
-	1	-	1	-	-	-	1338676-1	CAM, POST FEED 30 & 40 mm ST	46
-	1	1	1	1	1	1	1320999-3	APPLICATOR BASIC SUBASSY	45
-	1	1	1	1	1	1	690191-1	PLUG, NYLON	44
-	1	1	1	1	1	1	1338660-1	RAM	43
-	-	-	-	-	-	-	-	-	42
-	1	1	1	1	1	1	2-18024-6	SCR, BHC (M8X25) RAM	41
-	-	-	-	-	-	-	-	-	40
-	1	1	1	1	1	1	690125-1	SHIM SUBASSY	39
-	1	1	1	1	1	1	469367-1	SPACER, FINE ADJUST	38
-	1	1	1	1	1	1	879103-2	FINE ADJUST HEAD SUBASSY	37
-	-	-	-	-	-	-	-	-	36
-	-	-	-	-	-	-	-	-	35
-	1	1	1	1	1	1	1320934-2	SUPPORT, TERMINAL	34
-	2	2	2	2	2	2	1-18024-0	SCR, BHC (M4X20) STRIP GUIDE	33
-	1	1	1	1	1	1	18027-2	WASHER, FLAT (M4)	32
-	1	1	1	1	1	1	1-18023-2	SCR, SKT CAP (M4X12) MOUNT BLOCK	31
-	1	1	1	1	1	1	1320908-1	SPACER, STRIP GUIDE	30
-	1	1	1	1	1	1	1633073-1	STRIP GUIDE PLATE ASSY	29
-	1	1	1	1	1	1	1-455888-5	SPACER, FRONT SHEAR DEP	28
-	2	2	2	2	2	2	1-22284-0	SPRING, DRAG	27
-	1	1	1	1	1	1	356835-1	LEVER, DRAG RELEASE	26
-	1	1	1	1	1	1	240792-1	DRAG, TERMINAL	25
-	1	1	1	1	1	1	1320928-1	PLATE, STRIP GUIDE	24
-	1	1	1	1	1	1	980371-4	SCR, SHC SHLD	23
-	1	-	1	-	-	-	690472-2	STRIPPER	22
-	1	1	1	1	1	1	1-18023-1	SCR, SHC (M4X10) STRIPPER	21
-	4	4	4	4	4	4	18025-2	WASHER, LOCK (M4) STRIPPER	20
-	-	1	-	-	1	-	690472-1	STRIPPER	19
-	1	-	-	1	-	-	1338684-1	HOLDER, SHEAR, FRONT (NO-CUT)	18
-	-	-	-	-	-	-	-	-	17
-	-	-	-	-	-	-	-	-	16
-	-	-	-	-	-	-	-	-	15
-	-	-	-	-	-	-	-	-	14
-	-	-	-	-	-	-	-	-	13
-	1	1	1	1	1	1	3-22280-3	SPRING, SHEAR	12
-	1	1	1	1	1	1	356885-4	STOP, SHEAR	11
-	-	1	1	-	1	1	1320921-1	HOLDER, SHEAR, FRONT (CUT)	10
-	1	1	1	1	1	1	1-454276-9	SHEAR, FLOAT (FRONT)	9
-	1	2	2	2	1	1	2-1333204-9	ANVIL	8
-	1	1	1	1	1	1	1-240641-0	SPACER, DEPRESSOR (REAR)	7
-	-	-	-	-	-	-	-	-	6
-	1	1	1	1	1	1	1-455889-4	DEPRESSOR, SHEAR (FRONT)	5
-	1	1	1	1	1	1	238011-8	SPACER, BLOCK CRIMPER	4
-	1	2	2	2	1	1	2-854830-7	CRIMPER, INSULATION	3
-	1	1	1	1	1	1	455888-7	SPACER, CRIMPER	2
-	1	2	2	2	1	1	1-456405-5	CRIMPER, WIRE	1
-77	-76	-72	-71	-6	-2	-1	PART NO	DESCRIPTION	ITEM NO

QTY REQD PER ASSY

REVISION OF EACH ASSY NO (WHEN BLANK, USE DWG REVISION)

DR

CHK

NAME

SCALE

DATE

1528384

1 of 1

REV

B

CUSTOMER AND ASSEMBLY DRAWING

RESTRICTED TO

Mouser Electronics

Authorized Distributor

Click to View Pricing, Inventory, Delivery & Lifecycle Information:

[TE Connectivity:](#)

[1528384-6](#)