

PRODUCT NUMBER

SEE TABLE

SPRING

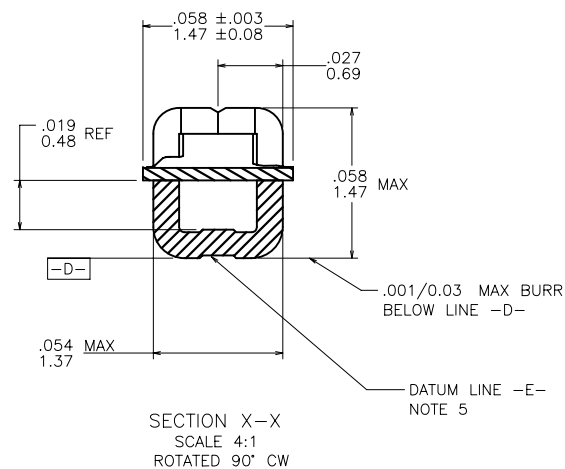
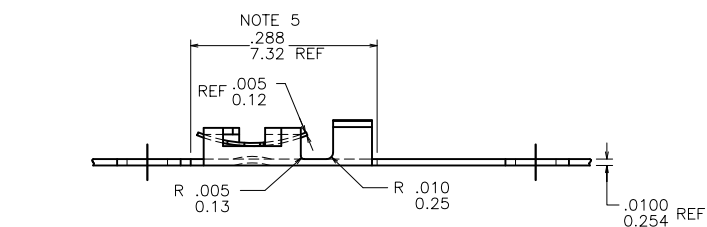
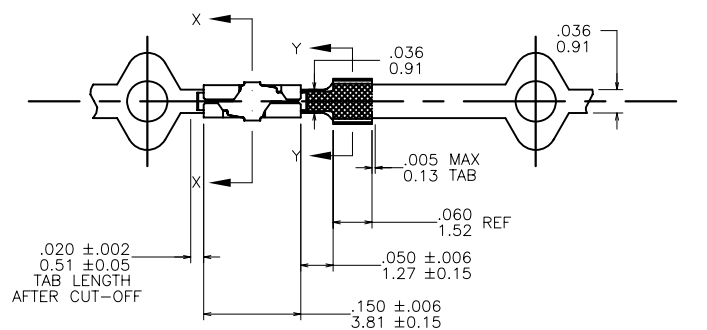
FINE PITCH KNURL

BODY

STANDARD SWAGE

DIM B

DIM A

RADIUS C  $\pm .004$   
 $\pm 0.10$ SECTION Y-Y  
SCALE 2:1

mat'l. code				surface		tolerance		projection		product family			
SEE NOTE 1										PV TERMINALS			
ltr	ecn no	dr	date	tolerances unless otherwise specified						title			
B	V61321	EPK	1996-10-14	angles		XX $\pm .01$ / X $\pm .3$		INCH/MM	MINI PV™ RECEPT. C.T.W. SHORT WIRE BARREL S/BUMP				
C	V05-0269	VS	2005-04-19			XXX $\pm .005$ / XX $\pm .13$							
D	V06-0625	HTB	2006-07-05			0° $\pm 2'$							
E	V08-0117	HTB	2008-04-10	dr	J. W. BAIR	1992-12-09			dwg no				
F	V08-0520	HTB	2008-12-03	enrg	T. HANNA	1992-12-09			sheet 1 of 2		size		
				chr	T. BREWBAKER	1993-07-27			93135		A4		
				appd	T. HANNA	1993-07-27		type					
sheet index		revision sheet		F	F								
				1	2								



PRODUCT NUMBER	WIRE SIZE	WIRE BARREL			SPRING THICKNESS
		DIM A	DIM B	RADIUS C	
93135-001	O B S O L E T E				
93135-001LF	22-26 AWG	.070/1.78	.070/1.78	.017/0.43	.0048/0.122
93135-002	O B S O L E T E				
93135-002LF	28-32 AWG	.054/1.37	.058/1.47	.011/0.28	.0048/0.122
93135-003	O B S O L E T E				
93135-003LF	22-26 AWG	.070/1.78	.070/1.78	.017/0.43	.0035/0.089
93135-004	O B S O L E T E				
93135-004LF	28-32 AWG	.054/1.37	.058/1.47	.011/0.28	.0035/0.089
93135-005	O B S O L E T E				
93135-005LF	22-26 AWG	.070/1.78	.070/1.78	.017/0.43	.0065/0.165
93135-006	O B S O L E T E				
93135-006LF	28-32 AWG	.054/1.37	.058/1.47	.011/0.28	.0065/0.165

## NOTES:

1. BODY MATERIAL: 1/4 HARD BRASS  
BODY PLATING: 30μ"/0.76μm Au OVER 50μ"/1.27μm Ni IN CONTACT AREA.  
REMAINDER OF TOP OF TERMINAL GOLD FLASH OVER 50μ"/1.27μm NICKEL.  
BACKSIDE OF TERMINAL PLATED WITH 30μ"/0.76μm NICKEL ONLY.  
SPRING MATERIAL: BeCu HEAT TREATED  
SPRING PLATING: Au FLASH
2. PART TO MATE WITH .025±.002/-.640±.050 SQUARE PIN.
3. APPLICABLE SPECIFICATIONS:  
TA-75: CRIMP METHODS FOR USE IN MINI LATCH HOUSING EXCEPT NO BELLMOUTH FRONT OR REAR.
4. PART TO BE LUBRICATED TO FACILITATE CRIMPING.
5. MAX. BURR ANY EDGE .0032/0.081
6. BOTTOM SURFACE OF TERMINAL SHALL BE STRAIGHT WITHIN .003/0.08 OVER .288/7.32 REF LENGTH AS MEASURED ALONG DATUM LINE -E- ESTABLISHED AT CENTERLINE OF .054/1.37 DIA. PERFECT FORM NOT REQUIRED AT MMC.
7. PRODUCT MEETS EUROPEAN UNION DIRECTIVES AND OTHER COUNTRY REGULATIONS AS DESCRIBED IN GS-22-008.
8. THIS PRODUCT IS NOT INTENDED TO BE EXPOSED TO MANUFACTURING SOLDERING PROCESSES.

mat'l. code SEE NOTE 1				surface	tolerance	projection	product family PV TERMINALS	
ltr	ecr no	dr	date	tolerances unless otherwise specified			title	
F				angles	XX ±.01/X±3 XXX ±.005/XX±13	INCH/MM	MINI PV™ RECEPT. C.T.W. SHORT WIRE BARREL S/BUMP	
				0° ±2'	XXXX ±.0020/XXX±.051	scale 1:1	dwg no	sheet 2 of 2 size
				dr	J. W. BAIR 1992-12-09		93135	
				enrg	T. HANNA 1992-12-09		A4	
				chr	T. BREWBAKER 1993-07-27		type	
				appd	T. HANNA 1993-07-27		CUSTOMER Drawing	
sheet index	revision sheet							

# Mouser Electronics

Authorized Distributor

Click to View Pricing, Inventory, Delivery & Lifecycle Information:

[FCI / Amphenol:](#)

[93135-003LF](#) [93135-004LF](#) [93135-005LF](#) [93135-001LF](#)