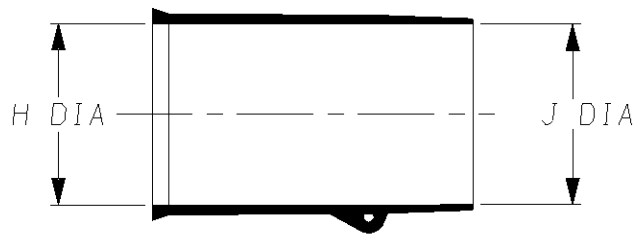
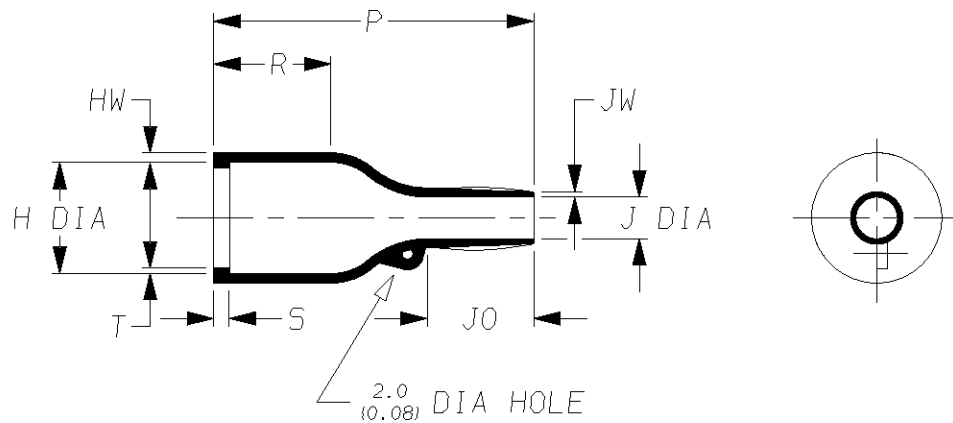


202K1\*\*-\*-02

a) Part as supplied.



b) Part after unrestricted recovery.



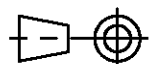
**DIMENSIONS** (in millimetres  
(in inches, for reference))

Part No.	H		J		P	R	S	T	JO	HW	JW
	Min a	Max b	Min a	Max b	±10% b	±10% b	±10% b	±10% b	±10% b	±10% b	±20% b
202K163-**-02	43 (1.69)	28.2 (1.11)	43 (1.69)	9.9 (0.39)	59 (2.32)	21 (0.83)	3.0 (0.12)	1.7 (0.07)	21.0 (0.83)	2.2 (0.09)	1.0 (0.04)
202K174-**-02	60 (2.36)	35.1 (1.38)	60 (2.36)	15.7 (0.62)	90 (3.54)	32 (1.26)	3.0 (0.12)	1.7 (0.07)	39.0 (1.54)	3.2 (0.13)	1.5 (0.06)
202K185-**-02	66 (2.60)	44.5 (1.75)	66 (2.60)	16.8 (0.66)	130 (5.12)	50 (1.97)	3.0 (0.12)	2.0 (0.08)	51.5 (2.03)	3.8 (0.15)	2.0 (0.08)

This is a trimmed variant  
Modified dimensions are shown thus:- #

Drawn **RK**      Checked **HMR**      Issue **4**      Date **24MAR11**  
Approval  
Design                      MKTG.                      Q.A.

Conforms to ISO Recommendations  
3rd Angle Projection  
Not to Scale





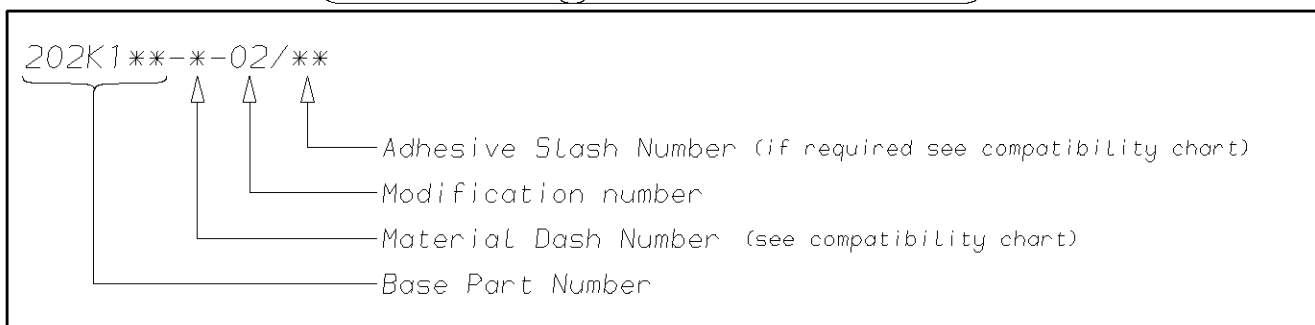
TE Connectivity

**Specification  
Control Drawing**

Part Number

202K1\*\*-\*-02 Issue 4

Iss.	Date	E.C.R. No.	Details of Change
2	September 2000	****	Redrawn
3	August 2007	CR06-HM-012	Imperial dimensions added

**Ordering Information****COMPATIBILITY CHART**

Material Dash Number	Material Description	SPEC Number	Coating Slash Number
-3	POLYOLEFIN, SEMI-RIGID	RT-301	/42, /86, /180
-4	POLYOLEFIN, FLEXIBLE	RT-1304	/42, /86, /180
-6	SILICON	RT-602	N/A
-25	ELASTOMER, FLUID RESISTANT	RW-2070	/42, /86, /225
-130	POLYOLEFIN, COMMERCIAL FLEXIBLE	RW-2008	/42

**NOTES**

- ① As supplied dimensions are for uncoated parts, when coating is added, entry diameters will reduce by 1.5mm Max.

TE Connectivity UK Ltd. Faraday Road, Swindon, Wiltshire, SN3 5HH England Telephone: (01793) 528171 Fax: 572516	TE Connectivity 300, Constitution Drive, Menlo Park, CA 94025 USA Telephone (650) 361-3860 Fax: (650) 361-5579
Cage Code K1010	Cage Code 06090

# Mouser Electronics

Authorized Distributor

Click to View Pricing, Inventory, Delivery & Lifecycle Information:

[TE Connectivity:](#)

[202K185-4-02-0](#)