

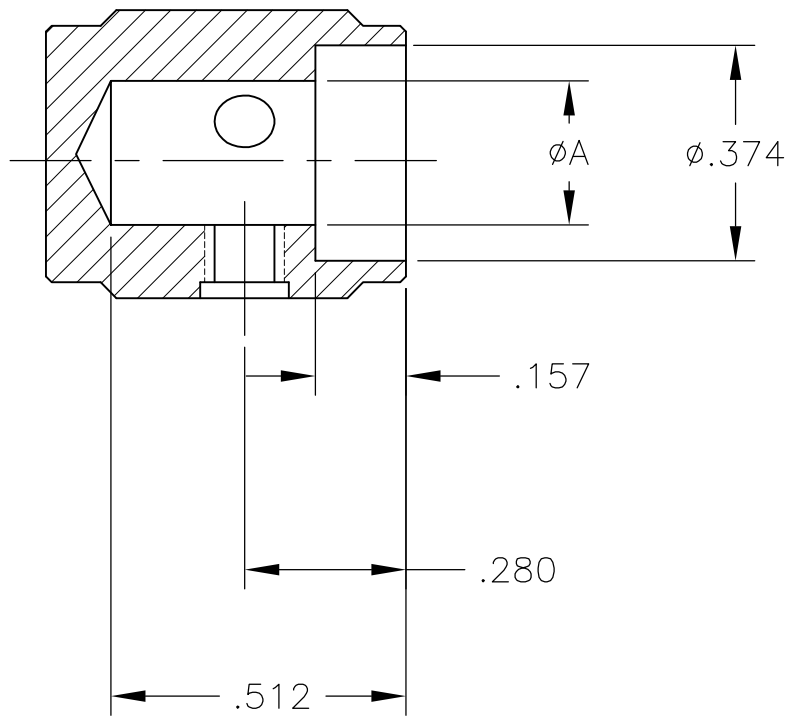
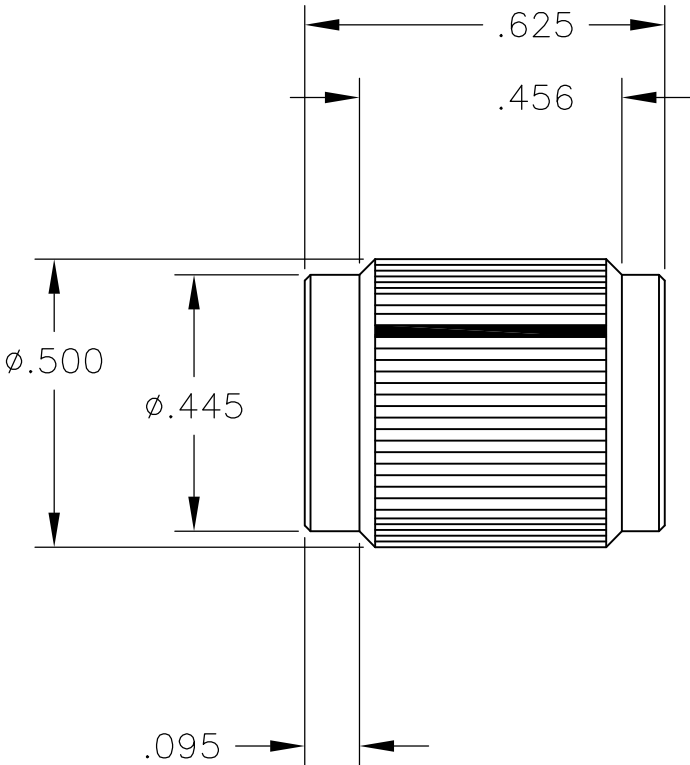
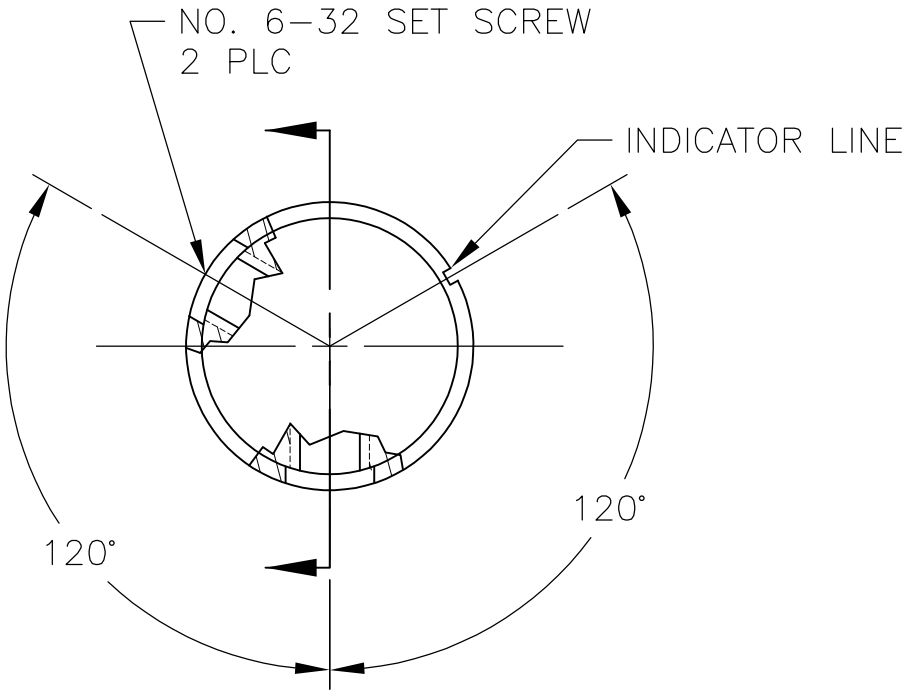
4

3

2

1

LOC		DIST		REVISIONS					
AD		00		P	LTR	DESCRIPTION		DATE	APVD
					A1	REVISED PER ECO-11-004917		11MAR11	RK HMR



- 1

NOB: ALUMINUM; SET SCREWS: STAINLESS STEEL
- 2

FINISH: ANODIZED - SEE TABLE
3.

WAS DRAWING NUMBER 80253

.251	NONE	BLACK	BLACK	KN500B1/4NL	1571193-1
	WHITE	NATURAL	BLACK	KN500BA1/4	4-1437622-8
	BLACK	BLACK	NATURAL	KN500AB1/4	4-1437622-4
	WHITE	BLACK	BLACK	KN500B1/4	4-1437622-6
	BLACK	NATURAL	NATURAL	KN500A1/4	4-1437622-2
.126	WHITE	NATURAL	BLACK	KN500BA1/8	4-1437622-9
	BLACK	BLACK	NATURAL	KN500AB1/8	4-1437622-5
	WHITE	BLACK	BLACK	KN500B1/8	4-1437622-7
	BLACK	NATURAL	NATURAL	KN500A1/8	4-1437622-3
A	INDICATOR LINE	TOP	BODY	MODEL NUMBER	PART NUMBER
	2	COLOR			

THIS DRAWING IS A CONTROLLED DOCUMENT.

DIMENSIONS: INCHES

MATERIAL

1

TOLERANCES UNLESS OTHERWISE SPECIFIED:

0 PLC ± -

1 PLC ± -

2 PLC ± -

3 PLC ± .020

4 PLC ± -

ANGLES ± -

FINISH

DWN M.BINNER

CHK M.ZITTO

APVD M.ZITTO

PRODUCT SPEC

APPLICATION SPEC

WEIGHT -

03DEC02

-

-

-

-

-

STE

TE Connectivity

NAME

KNOB, STRAIGHT KNURL

HAIRLINE INDICATOR (KN-500)

SIZE

CAGE CODE

DRAWING NO

RESTRICTED TO

A3

00779

C-4-1437622-6

-

CUSTOMER DRAWING

SCALE 3:1

SHEET 1 OF 1

REV A1

Mouser Electronics

Authorized Distributor

Click to View Pricing, Inventory, Delivery & Lifecycle Information:

[TE Connectivity:](#)

[KN500A1/4](#)