



Quality Products. Service Excellence.

Module Instrument 518 Series

Key Features:



- 18 ga. steel base and top - for extra strength (front & back panel will not push in from mounted buttons, controls, connectors , etc.).
- Sides include one horizontal row of louvers for ventilation.
- Choice of sloping or vertical sides by reversing case.
- Includes our handle (part number **1427C1**) & holes in the top for mounting. Also includes plastic plugs if handle is not desired (see features area below).
- Sold pre-assembled with a two tone grey powder coat finish. Top is dark satin grey. Bottom, front & back is smooth light grey).
- Comes with four self adhesive rubber feet and required hardware.
- Assembled with 8 machine screws into weld-nuts for repetitive assembly & disassembly.
- Replacement screws **SC19482-50** (Pkg. of 50, Philips head - #6 X 1/4" self tapping screws).

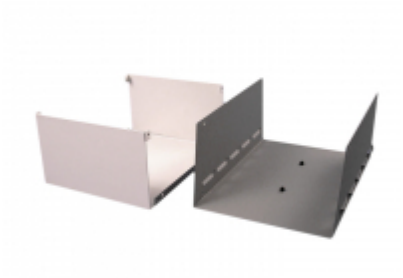
Photo Features



Internal weld nuts make for smooth, reliable assembly.



Can be used with a handle or with (2) plastic plugs, all included with enclosure.



Shown here unassembled with plastic plugs installed.

Enclosures

Part Number	Width	Length (Top)	Length (Bottom)	Height
518-0910	7.75	11.06	9.75	4.75
518-0920	11.75	9.63	7.75	6.25

Data subject to change without notice

© 2020. Hammond Manufacturing Ltd. All rights reserved.

Mouser Electronics

Authorized Distributor

Click to View Pricing, Inventory, Delivery & Lifecycle Information:

[Hammond:](#)

[518-0920](#) [518-0910](#)