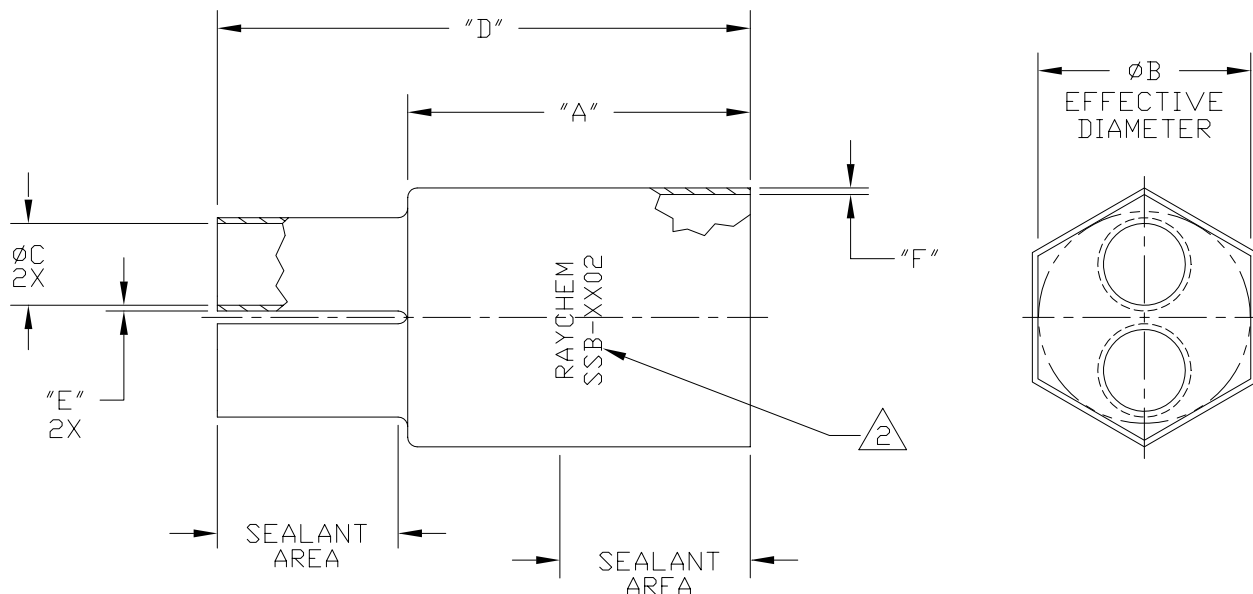


THIS DRAWING AND THE INFORMATION SET FORTH HEREON ARE THE PROPERTY OF TYCO CORP. AND ARE TO BE HELD IN TRUST AND CONFIDENCE. PUBLICATION, DUPLICATION, DISCLOSURE OR USE FOR ANY PURPOSE NOT EXPRESSLY AUTHORIZED IN WRITING BY TYCO CORP. IS PROHIBITED.

REVISIONS			
LTR	DESCRIPTION	DATE	APPROVED
C	REVISED PER DCR R050285	7/25/05	



PART NUMBER	ØB		ØC		"A" ±10%		"D" ±10%		"E" ±20%	"F" ±20%
	MIN EXP	MAX REC	MIN EXP	MAX REC	EXP	REC	EXP	REC	REC	REC
SSB-1202	1.60 [40,64]	.50 [12,7]	.50 [12,7]	.15 [3,81]	2.00 [50,8]	2.57 [65,28]	3.14 [79,76]	4.09 [103,89]	.08 [2,03]	.12 [3,05]
SSB-2002	2.00 [50,8]	1.50 [38,10]	.75 [19,05]	.37 [9,39]	2.85 [72,39]	3.67 [93,22]	5.32 [135,13]	6.56 [166,63]	.09 [2,29]	.10 [2,54]

NOTES:

1. MATERIAL: HEAT SHRINKABLE BOOT MATERIAL IN ACCORDANCE WITH -3 POLYOLEFIN THIS INCLUDES INTERNAL COATING OF FACTORY APPLIED NON-SETTING SEALANT. BOOTS ARE AVAILABLE WITHOUT SEALANT ON SPECIAL ORDER.

MARKING: PART TO BE MARKED AS SHOWN, REPLACE "X'S" WITH APPROPRIATE CHARACTERS (e.g. SSB-2002).

© 2004-2005 Tyco Electronics Corporation. All rights reserved

SPECIFICATION CONTROL DRAWING

UNLESS OTHERWISE SPECIFIED DIMENSIONS ARE IN INCHES. METRIC DIMENSIONS ARE IN BRACKETS.

DECIMALS

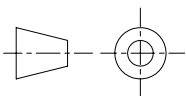
.XXX ± — [mm]
 .XX ± — [mm]
 .X ± — [mm]

ANGLES

.X ± —

DRAWN G. ROSITANO	DATE 9/20/95
CHECKED	DATE
APPROVED	DATE
APPROVED	DATE
CAD NAME R050285	

THIRD ANGLE PROJECTION



tyco **Raychem**
 Electronics

TYCO ELECTRONICS
 300 CONSTITUTION DRIVE
 MENLO PARK, CALIFORNIA 94025

TITLE

2-LEG
 STRAIGHT BOOTS

SIZE A	CODE IDENT. NO. 06090	DWG. NO. SSB-XX02	REV C
DO NOT SCALE THIS DWG		SHEET 1 OF 1	

Mouser Electronics

Authorized Distributor

Click to View Pricing, Inventory, Delivery & Lifecycle Information:

[TE Connectivity:](#)

[SSB-1202FR](#)