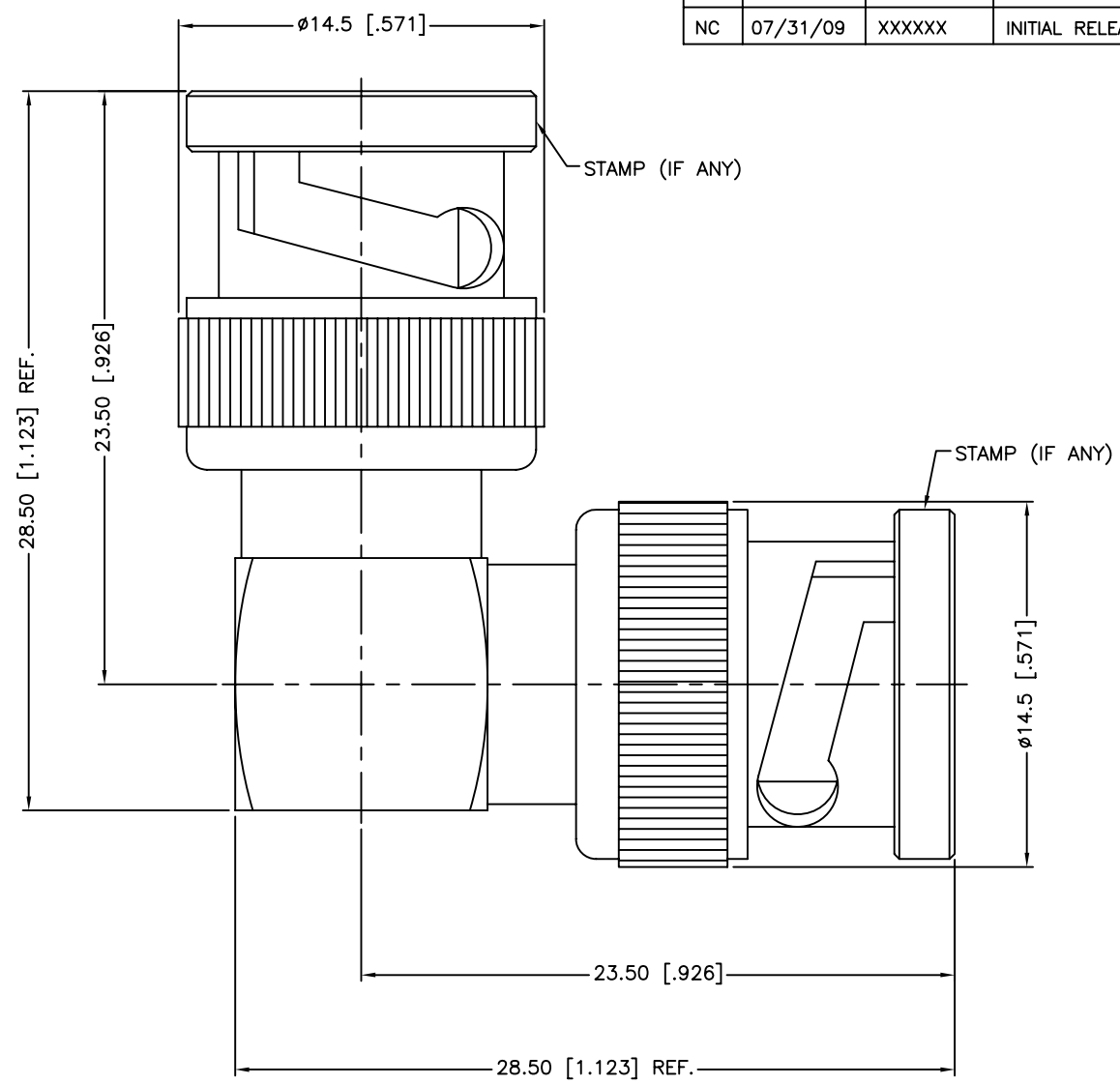


REV.	DATE	ECR NO.	DESCRIPTION
NC	07/31/09	XXXXXX	INITIAL RELEASE



QTY	FINISH	MATERIAL	DESCRIPTION
1	NICKEL	BRASS	COVER
2	GOLD	BRASS	CONTACT PIN
2	NICKEL	BRASS	WASHER
4	NICKEL	SK5	SPRING
2	NICKEL	BRASS	RETAINER RING
2	RED	RUBBER	GASKET
1	GOLD	BRASS	CONTACT PIN
2	NATURAL	PTFE	INSULATOR
1	NICKEL	BRASS	BODY
1	NICKEL	BRASS	HOUSING
2	NICKEL	BRASS	SHELL
QTY	FINISH	MATERIAL	DESCRIPTION

UNLESS OTHERWISE SPECIFIED DIMENSIONS ARE IN MILLIMETERS. DIMENSIONS IN [] ARE IN INCHES AND FOR CUSTOMER REFERENCE ONLY.

UNLESS OTHERWISE SPECIFIED TOLERANCES FOR MILLIMETERS ARE:
0.5 - 8mm ± 0.20 mm
8 - 30mm ± 0.40 mm
30 - 120mm ± 0.50 mm

UNLESS OTHERWISE SPECIFIED TOLERANCES FOR INCHES ARE:
.020 - .315 = ± 0.007 "
.315 - 1.180 = ± 0.015 "
1.180 - 4.724 = ± 0.020 "

DO NOT SCALE DRAWING

APPROVALS	DATE
DRAWN M.ZHANG	07/31/09
CHECKED	
ISSUED	
SHEET 1 OF 1	
CAD FILE	C:/CONNEX/112655.DWG

Amphenol Connex

PART DESCRIPTION
BNC MALE TO MALE R/A ADAPTOR

PART NO.
112655

DWG. NO. 112655.DWG	REV. NC	SIZE A	SCALE NA
---------------------	---------	--------	----------

Mouser Electronics

Authorized Distributor

Click to View Pricing, Inventory, Delivery & Lifecycle Information:

[Amphenol:](#)

[112655](#)