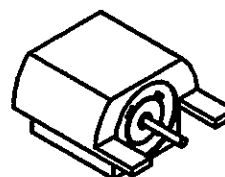
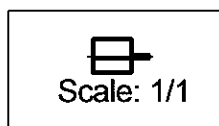
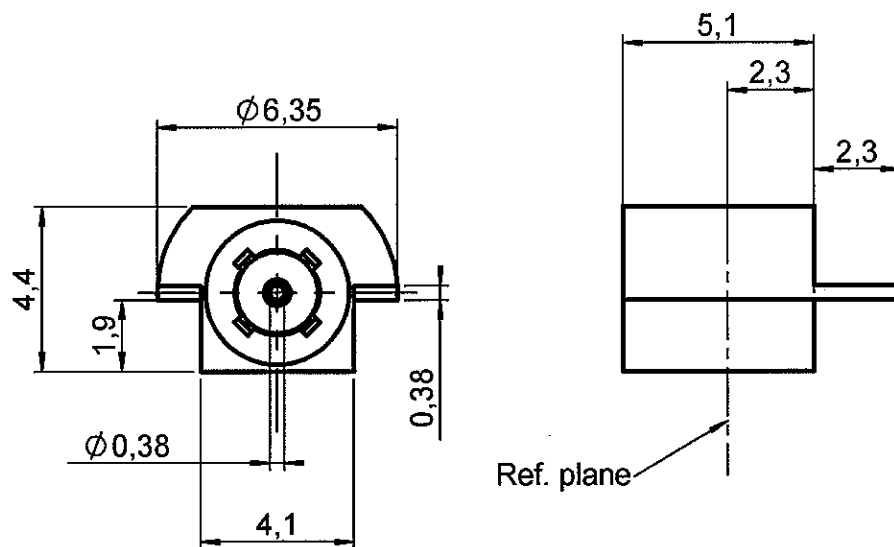


STRAIGHT MALE RECEPTACLE FOR PCB

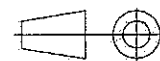
SMT TYPE EDGE-CARD - SMOOTH BORE

R222.423.720

Series : SMP



All dimensions are in mm.



COMPONENTS	MATERIALS	PLATING (μm)
BODY	STAINLESS STEEL	GOLD 1.3 OVER NICKEL 2
CENTER CONTACT	BERYLLIUM COPPER	GOLD 1.27 OVER NICKEL 1.27
OUTER CONTACT	-	-
INSULATOR	PTFE	-
GASKET	-	-
OTHERS PARTS	-	-
-	-	-
-	-	-

Issue : 0538 C

In the effort to improve our products, we reserve the right to make changes judged to be necessary.



RADIALL®

STRAIGHT MALE RECEPTACLE FOR PCB**R222.423.720****SMT TYPE EDGE-CARD - SMOOTH BORE**

Series : SMP

PACKAGING**SPECIFICATION**

Standard	Unit	Other
100	'W' option	Contact us

ELECTRICAL CHARACTERISTICS**ENVIRONMENTAL**

Impedance		50 Ω
Frequency		0-12 GHz
VSWR	1.15* +	0.000 x F(GHz) Maxi
Insertion loss		0.12 \sqrt{F} (GHz) dB Maxi
RF leakage	- (- F(GHz)) dB Maxi
Voltage rating		335 Veff Maxi
Dielectric withstanding voltage		500 Veff mini
Insulation resistance		5000 M Ω mini

Operating temperature	-65/+165 °C
Hermetic seal	NA Atm.cm3/s
Panel leakage	NA

OTHER CHARACTERISTICS

Assembly instruction

Others :

* Coaxial transmission line only

MECHANICAL CHARACTERISTICS

Center contact retention	
Axial force – Mating end	6.8 N mini
Axial force – Opposite end	NA N mini
Torque	NA N.cm mini
Recommended torque	
Mating	NA N.cm
Panel nut	NA N.cm
Mating life	1000 Cycles mini
Weight	0.657 g

Issue : 0538 C

In the effort to improve our products, we reserve the right to make changes judged to be necessary.

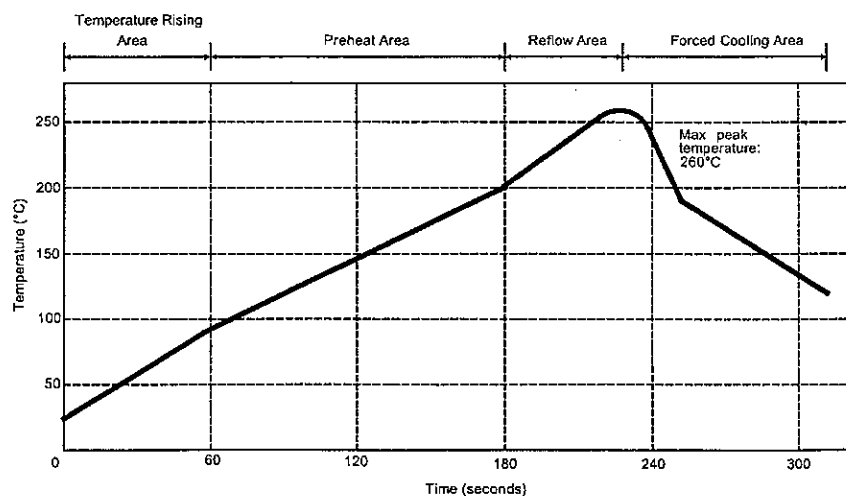
**RADIALL®**

STRAIGHT MALE RECEPTACLE FOR PCB**SMT TYPE EDGE-CARD - SMOOTH BORE****R222.423.720**

Series : SMP

SOLDER PROCEDURE

1. Deposition of solder paste 'Sn Ag4 Cu0.5' on mounting zone by screen printing application. We recommend a low residue flux.
We advise a thickness of 150 microns (.5.9 microinch). Verify that the edges of the zone are clean.
2. Placement of the receptacle on the mounting zone with an automatic machine of 'pick and place' type.
Video camera is recommended for the positioning of the component. Adhesive agents must not be used on the receptacle.
3. Soldering by infra-red reflow.
Below, please find the typical profile to use.
4. Cleaning of printed circuit boards.
5. Checking of solder joints and position of the component by visual inspection.

TEMPERATURE PROFILE

Parameter	Value	Unit
Temperature rising Area	1 - 4	°C/sec
Max Peak Temperature	260	°C
Max dwell time @260°C	10	sec
Min dwell time @235°C	20	sec
Max dwell time @235°C	60	sec
Temperature drop in cooling Area	-1 to - 4	°C/sec
Max dwell time above 100°C	420	sec

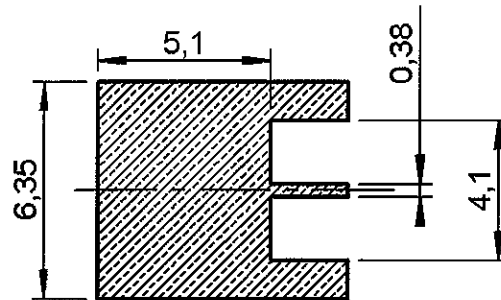
Issue : 0538 C

In the effort to improve our products,
necessary.**RADIAL**®

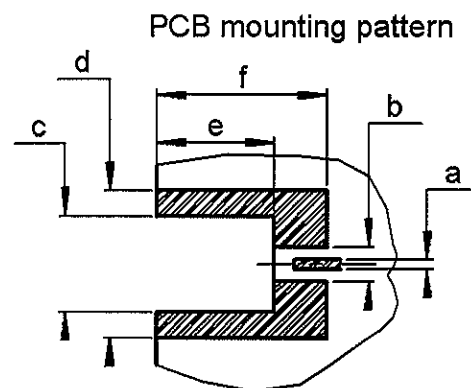
STRAIGHT MALE RECEPTACLE FOR PCB
SMT TYPE EDGE-CARD - SMOOTH BORE

R222.423.720

Series : SMP



Shadow of receptacle
for video camera



a	0,48
b	1,5
c	4,18 - 4,32
d	6,5
e	4,95 - 5,45
f	7,52

Issue : 0538 C

In the effort to improve our products, we reserve the right to make changes judged to be necessary.



RADIALL®

Mouser Electronics

Authorized Distributor

Click to View Pricing, Inventory, Delivery & Lifecycle Information:

Radial:

[R222423720](#) [R222423720W](#)