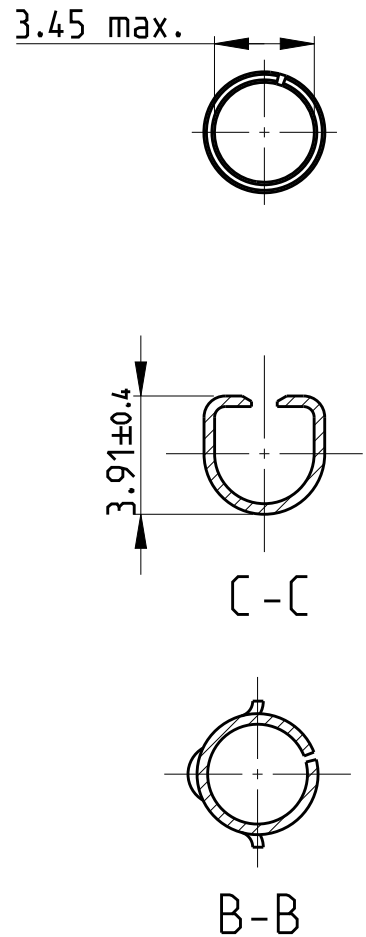
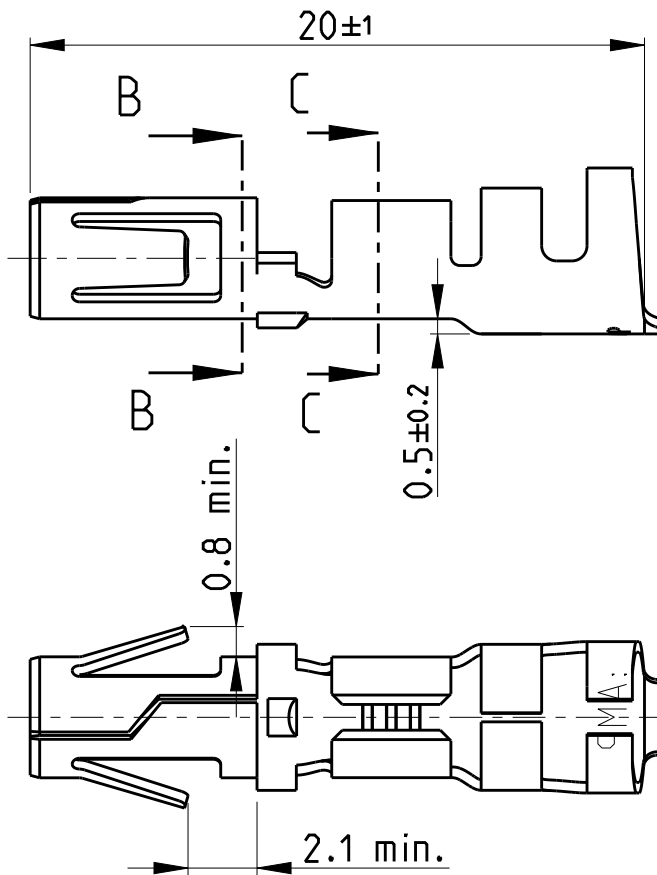


REVISIONS

P	LTR	DESCRIPTION	DATE	DWN	APVD
	N2	REVISED PER ECR-17-006577	15MAY2017	JB	DZ



NOTE:

1 OBSOLETE PARTS: OBSOLETE CIS STREAMLINING PER D.RENAUD/D.SINISI

	2.1-5.3mm ²	max. 4.5mm	Bronze	None	925663-5	
1	OBSOLETE	2.1-5.3mm ²	max. 4.5mm	Bronze	Plain	925663-4
		2.1-5.3mm ²	max. 4.5mm	Bronze	Silver	925663-3
1	OBSOLETE	2.1-5.3mm ²	max. 4.5mm	Bronze	Pre-tin	925663-2
		2.1-5.3mm ²	max. 4.5mm	Brass	Pre-tin	925663-1
	DGB	Insulation Ø	Material	Finish	Part no.	

DIMENSIONS:

mm

TOLERANCES UNLESS OTHERWISE SPECIFIED:

0	PLC	±
1	P/C	±
2	PLC	±0.4
3	P/C	±
4	PLC	±
ANGLES		±1° 30'



DWN 26NOV2008

J. Salo

CHK 26NOV2008

R. Sole

APVD 26NOV2008

P.E.Grassano

PRODUCT SPEC

-

APPLICATION SPEC

-

WEIGHT -

-

CUSTOMER DRAWING

MATERIAL

-

FINISH

-



TE Connectivity

NAME .140 DIA SOCKET

-

SIZE

A4

CAGE CODE

-

DRAWING NO

C-925663

RESTRICTED TO

-

SCALE

4:1

SHEET

1 OF 1

REV

N2

2008

RELEASED FOR PUBLICATION

THIS DRAWING IS UNPUBLISHED.

ALL RIGHTS RESERVED.

BY -

© COPYRIGHT 2008

Mouser Electronics

Authorized Distributor

Click to View Pricing, Inventory, Delivery & Lifecycle Information:

[TE Connectivity:](#)

[925663-1](#)