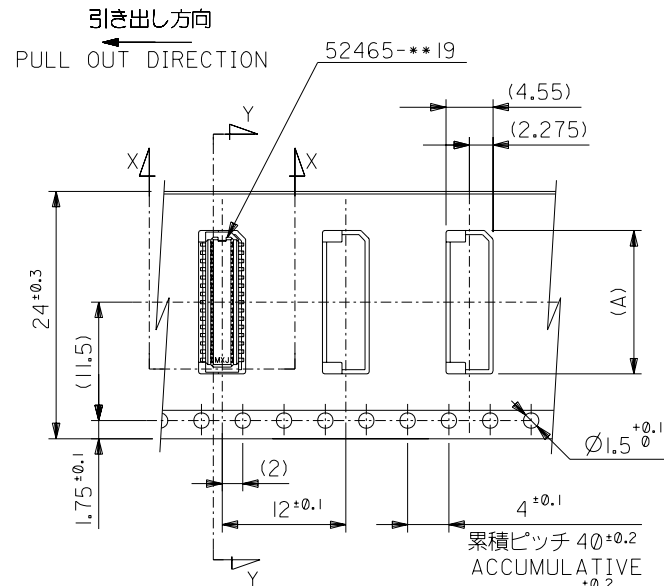
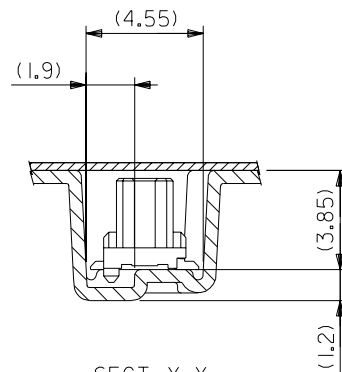
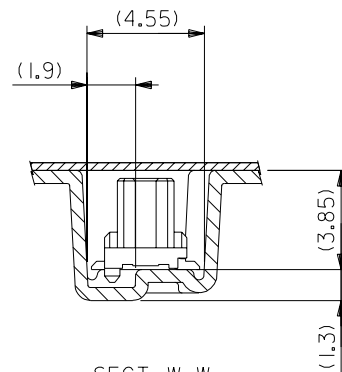
SECT. Y-Y

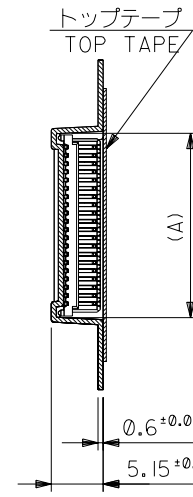
24mm幅キャリアテープ
24mm WIDTH CARRIER TAPE



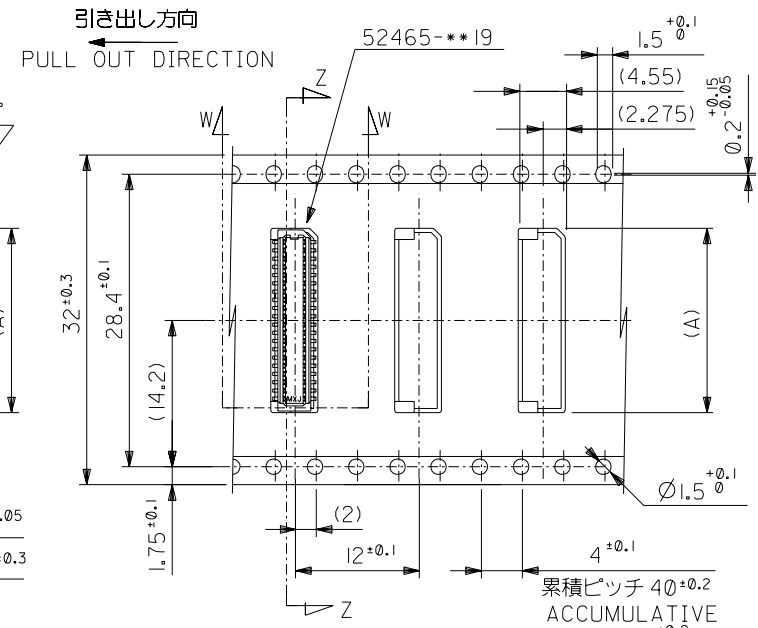
SECT. X-X
(SCALE: 5:1)



SECT. W-W
(SCALE: 5:1)



SECT. Z-Z



32mm幅キャリアテープ

32	37.4	33.4	17.9	52465-4070	40
			17.1	52465-3870	38
24	29.4	25.4	16.3	52465-3670	36
			15.5	52465-3470	34
			14.7	52465-3270	32
			13.9	52465-3070	30
			13.1	52465-2870	28
			12.3	52465-2670	26
			11.5	52465-2470	24
			10.7	52465-2270	22
			9.9	52465-2070	20
キャリアテープ幅 CARRIER TAPE WIDTH	C	B	(A)	MATERIAL. NO.	極数 CIRCUIT

52465-**70		MODEL NO.		材料 MATERIAL		SHEET 1 OF 2 参照 REFER TO SHEET 1 OF 2		molex MOLEX-JAPAN CO.,LTD. 日本モレックス株式会社	
角度 ANGLE		±3°		仕上げ FINISH		—		REVISE ONLY ON CAD SYSTEM	
30 以上 OVER		±0.5		適用電線範囲 WIRE RANGE		—		TITLE 名称	
10 以上 30 未満 OVER UNDER		±0.25		被覆外径 INS. RANGE		—		0.8 B+B Conn Hsg Assy	
10 未満 UNDER		±0.2		0 新規作成 RELEASED (J2004-2322)		H.S.M.S. '04/2/6		SMT W/Boss Embstp Pkg -LEAD FREE-	
一般公差 TOLERANCES		記号 LTR		変更内容 REVISION RECORD		DR. CHK. 日付 DATE		DRAWN BY '04/02/6 H.SHIMABUKURO	
								CHK'D BY '04/02/6 K.TOJO	
								DWG. NO. (SHEET 2 OF 2)	
								REV	
								SD-52465-024	
								0	

F

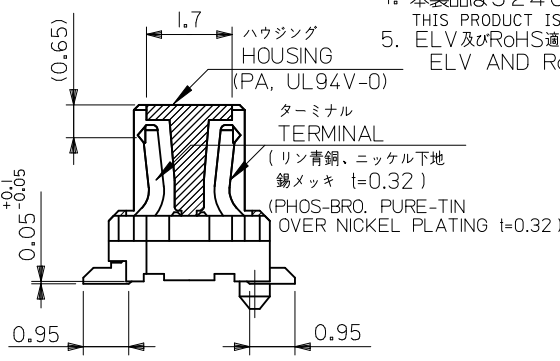
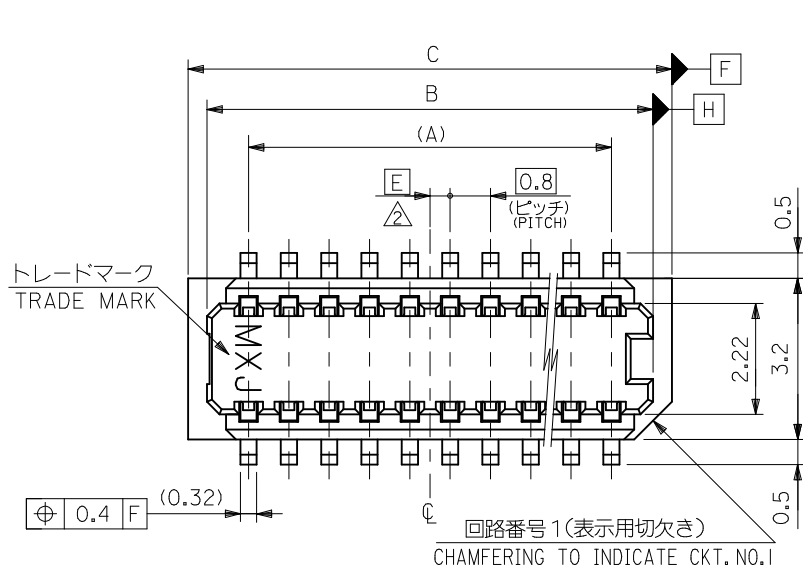
E

D

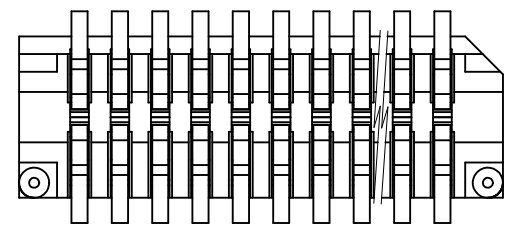
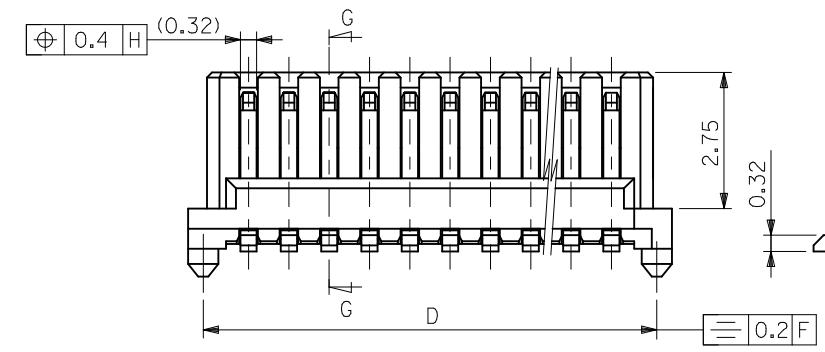
C

B

A



SECT. G-G



注記 NOTES

- 1. 嵌合相手：53307-シリーズ、53309-シリーズ
MATES WITH 53307,53309 SERIES.
- 2. ハウジングの ㊦ から隣接するターミナルの ㊦ 迄の位置を示す。
SHOW POSITION FROM ㊦ OF HOUSING TO ㊦ OF ADJACENT TERMINALS.
- 3. 一对の基板の嵌合に於いて、本製品を2個以上使用することは推奨できません。
MXJ DOSE NOT RECOMMEND THE USAGE OF TWO OR MORE OF THESE CONNECTORS BETWEEN A SINGLE PAIR OF P. C. BOARD.
- 4. 本製品は52465-***17の鉛フリー品である。
THIS PRODUCT IS LEAD FREE OF 53465-***17.
- 5. ELV及びRoHS適合品
ELV AND RoHS COMPLIANT

0.4	17.0	17.6	16.85	15.2	52465-4070	52465-4019	40
0.8	16.2	16.8	16.05	14.4	-3870	-3819	38
0.4	15.4	16.0	15.25	13.6	-3670	-3619	36
0.8	14.6	15.2	14.45	12.8	-3470	-3419	34
0.4	13.8	14.4	13.65	12.0	-3270	-3219	32
0.8	13.0	13.6	12.85	11.2	-3070	-3019	30
0.4	12.2	12.8	12.05	10.4	-2870	-2819	28
0.8	11.4	12.0	11.25	9.6	-2670	-2619	26
0.4	10.6	11.2	10.45	8.8	-2470	-2419	24
0.8	9.8	10.4	9.65	8.0	-2270	-2219	22
0.4	9.0	9.6	8.85	7.2	-2070	-2019	20
0.8	8.2	8.8	8.05	6.4	-1870	-1819	18
0.4	7.4	8.0	7.25	5.6	-1670	-1619	16
0.8	6.6	7.2	6.45	4.8	-1470	-1419	14
0.4	5.8	6.4	5.65	4.0	-1270	-1219	12
0.8	5.0	5.6	4.85	3.2	52465-1070	52465-1019	10

52465-***19	E	D	C	B	A	EMBOSSD TAP	MATERIAL. NO.	極数 K.T.
MODEL NO.						ORDER No.オダ-番号		

REVISED

EC NO: J2010-0755

DRWN:KTOYODA

CHKD:SMARUYAMA

APPR:MSASAO

2009/12/18

2010/03/24

2010/03/25

DESCRIPTION

10 UNDER ±0.20

10 OVER 30 UNDER ±0.25

30 OVER ±0.30

ANGULAR ±3 °

DRAFT WHERE APPLICABLE

MUST REMAIN

WITHIN DIMENSIONS

GENERAL TOLERANCES

(UNLESS SPECIFIED)

DIMENSION STYLE

MM ONLY

SCALE

DESIGN UNITS

METRIC

THIRD ANGLE

PROJECTION

TITLE

0.8 BOARD TO BOARD CONN.

HOUSING ASSY SMT

MOLEX INCORPORATED

SD-52465-025

1 OF 2

THIS DRAWING CONTAINS INFORMATION THAT IS PROPRIETARY TO MOLEX

INCORPORATED AND SHOULD NOT BE USED WITHOUT WRITTEN PERMISSION

F

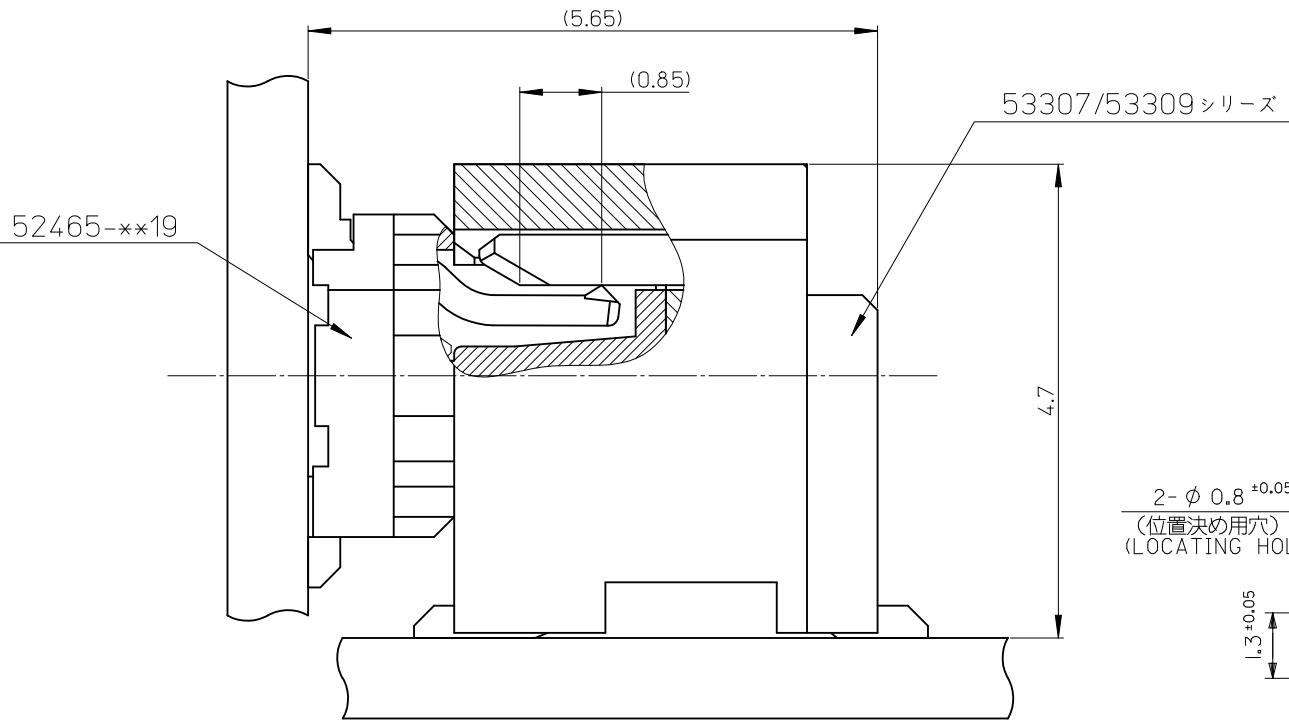
E

D

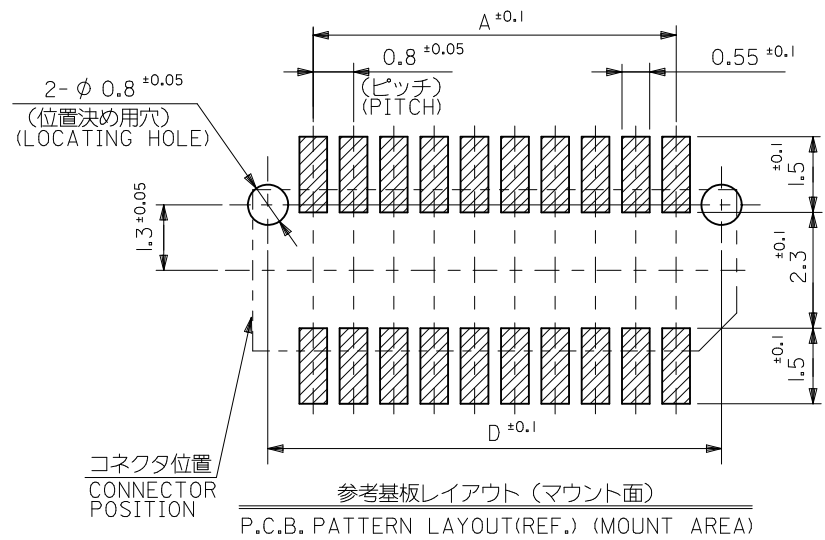
C

B

A



有効嵌合長 (参考)
EFFECTIVE MATING LENGTH
(REFERENCE)



REVISED EC NO: J2010-0755 2009/12/18 DRW:KTOYODA CHK'D:SMARUYAMA 2010/03/24 APPR:MSASAO 2010/03/25	DESCRIPTION	GENERAL TOLERANCES (UNLESS SPECIFIED)		DIMENSION STYLE MM ONLY		SCALE ---	DESIGN UNITS METRIC	THIRD ANGLE PROJECTION		
		10 UNDER	± 0.20	DRAWN BY HSHIMABUKURO	DATE '04/02/06	TITLE 0.8 BOARD TO BOARD CONN. HOUSING ASSY SMT				
		10 OVER 30 UNDER	± 0.25	CHECKED BY KTOJO	DATE '04/02/06					
		30 OVER	± 0.30	APPROVED BY MSASAO	DATE '04/02/06	MOLEX INCORPORATED				
		ANGULAR	± 3 °	MATERIAL NO.						
	DRAFT WHERE APPLICABLE MUST REMAIN WITHIN DIMENSIONS		SEE TABLE		SD-52465-025			2 OF 2		
	REV			SIZE A3	THIS DRAWING CONTAINS INFORMATION THAT IS PROPRIETARY TO MOLEX INCORPORATED AND SHOULD NOT BE USED WITHOUT WRITTEN PERMISSION					

Mouser Electronics

Authorized Distributor

Click to View Pricing, Inventory, Delivery & Lifecycle Information:

Molex:

[52465-2070](#) [52465-3070](#) [52465-4070](#)