

SHELL SIZE	LAYOUT	Ø A	L MAX		M MINI	Ø C	THREAD	Ø B MINI	D MAXI	Ø E
			MALE	FEMELLE						
10	SEE NOTE 2	26.20	33	25.30	23.35	10.1	9/16-24 UNEF CLASS 2A	20.4	8.1	15.65
12	SEE NOTE 2	29.70	33	25.30	23.35	13.1	11/16-24 UNEF CLASS 2A	23.1	8.9	19.3
14	SEE NOTE 2	34.60	33	25.30	23.35	16.4	13/16-20 UNEF CLASS 2A	26.20	8.9	22.5
18	SEE NOTE 2	42	33	25.30	23.35	21.65	1/16-18 UNEF CLASS 2A	33.30	8.9	29

MATERIAL :

Coupling Nut:Polyamid UL94 V-0
Inset:Polyamid UL94 V0
Shell : Polyamid UL94 V-0
Coupling spring : Stainless steel
O'seal : Nitril

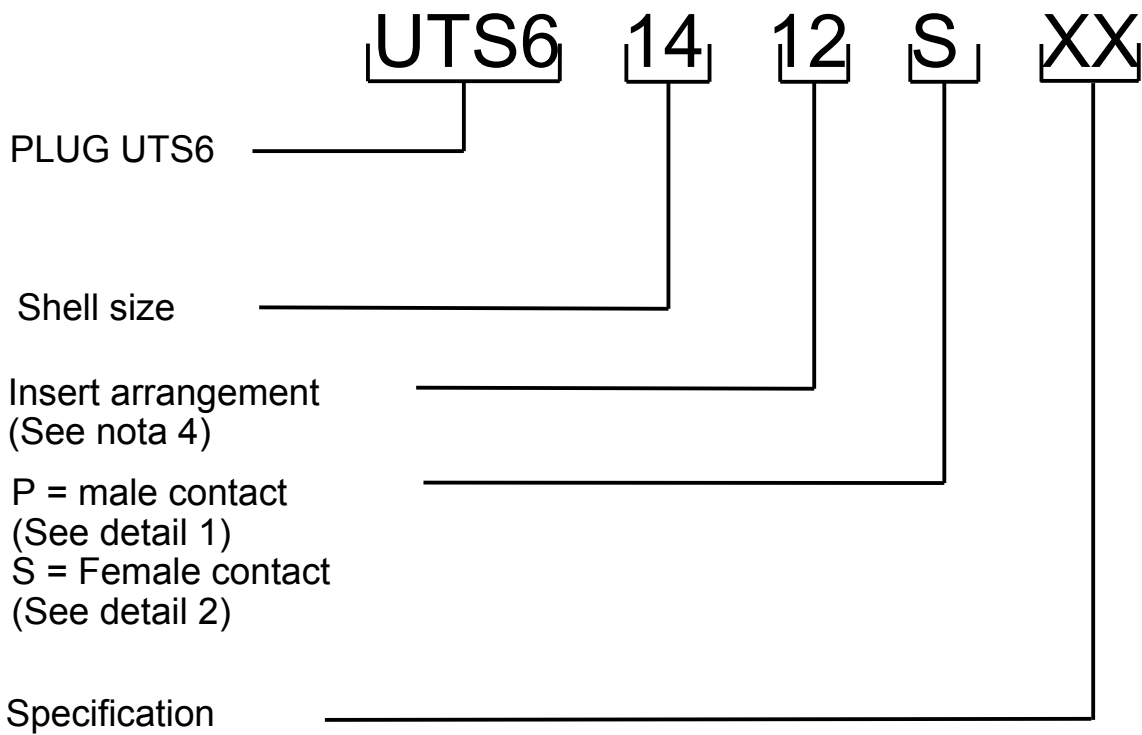
PERFORMANCE CHARACTERISTICS :

Operating temperature:-40°C up to 105°C
Insulation resistance:5000 MΩ min
Test potential:2000 Vrms for #16 layout and 1500Vrms for #20 layout
Corrosion salt spray:500 hours
Durability:250 matings and unmatings
Sealing in mated conditions:
-IP68 1 bar during 1 week : immersion under 10 m of water.
(IEC 60529)
-IP69K : exposure to high pressure water of cleaning
equipement(DIN 40050)

NOTES :

- 1-Contact to be ordered separately :refer to TRIM TRIO catalog
-2-Insert arrangements:refer to : C007-UTS1-A(Female insulator)
UTO-CONTACT-L-C02(Female insulator)
UTOW-CONTACT-L-C02(Female insulator)

C008-UTS1-A(Male insulator)
UTO-CONTACT-L-C01(Male insulator)
UTOW-CONTACT-L-C01(Male insulator)

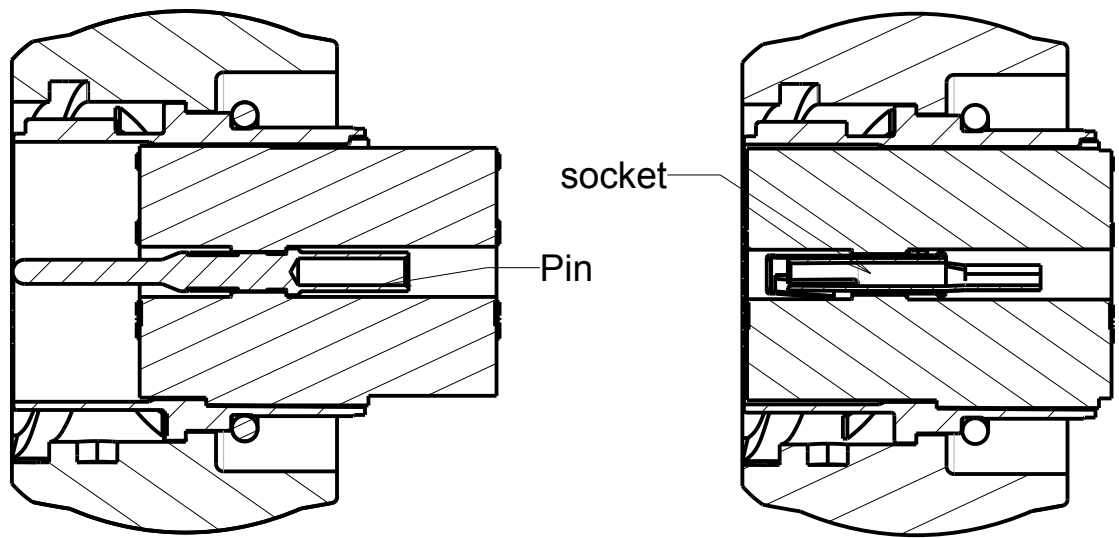


MALE CONNECTOR



(detail 1)

FEMALE CONNECTOR

(detail 2)



CUSTOMER DRAWING

b		16/02/2011	New drawing adding of size 18		—
ISS	DATE		Latest modification - by: J.Feurprier		MOD N°
Designed by: RAGAINE.M			Date: 12/06/2011	CUSTOMER DRAWING	
TITLE		UTS PLUG WITHOUT BACKSHELL UTS CONNECTOR			
Scale			General linear Tolerances: ± 0.2	NPRDS / PROJECT UTS	
2/1					
		WWW.SOURIAU.COM		This document is the property of SOURIAU It must not be reproduced or communicated without permission	
FORMAT	SOURIAU DRG N° C029-UTS1-A			SHEET	
A2					1 / 1
NOT EXPORT CONTROLLED					

Mouser Electronics

Authorized Distributor

Click to View Pricing, Inventory, Delivery & Lifecycle Information:

Souriau:

[UTS6142G1S](#) [UTS6102W2S](#) [UTS61419S](#) [UTS6147P](#) [UTS6147S](#) [UTS6104P](#) [UTS6103S](#) [UTS61210P](#)
[UTS6183G1P](#) [UTS6148P](#) [UTS6183G1S](#) [UTS6148S](#) [UTS6142G1P](#) [UTS6102W2P](#) [UTS6103W3S](#) [UTS6103W3P](#)
[UTS6128S](#) [UTS61823S](#) [UTS61210S](#) [UTS61832S](#) [UTS6104S](#) [UTS61832P](#) [UTS6128P](#) [UTS6124S](#) [UTS61412P](#)
[UTS6106P](#) [UTS6106S](#) [UTS6103P](#) [UTS61823P](#) [UTS6124P](#) [UTS61412S](#)