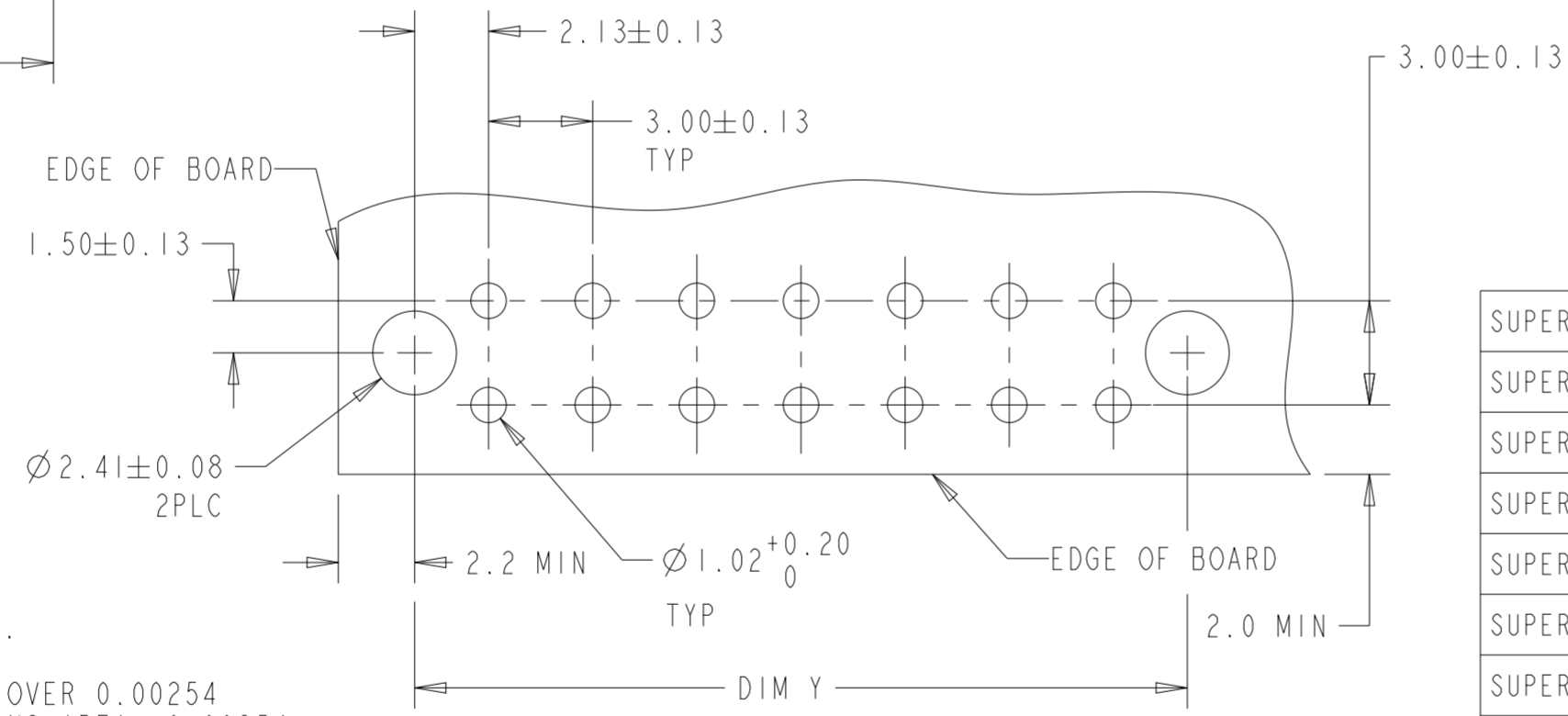
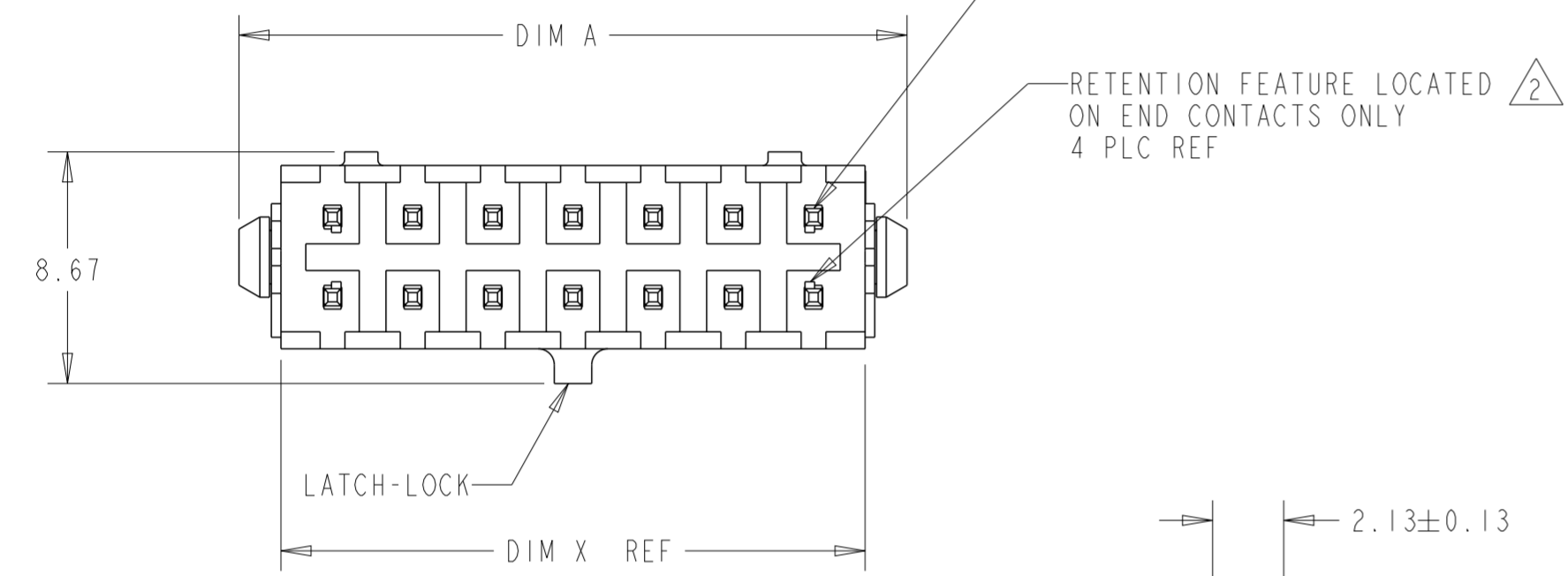
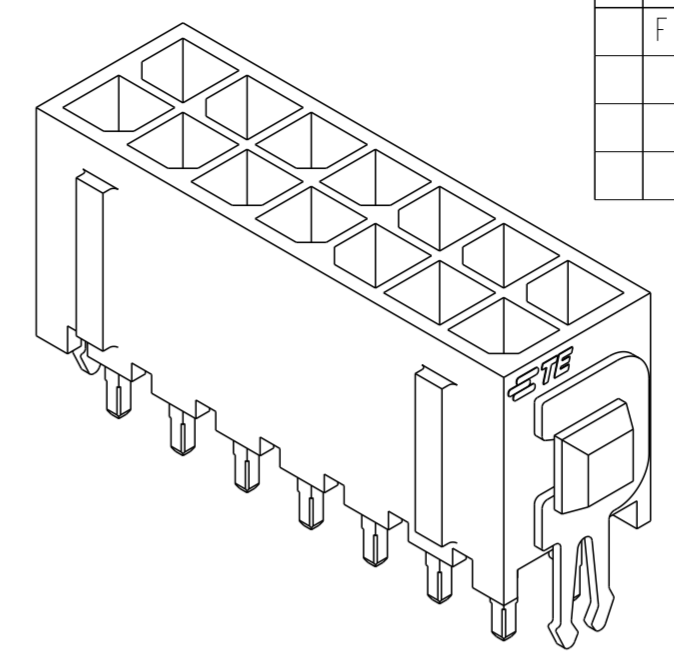
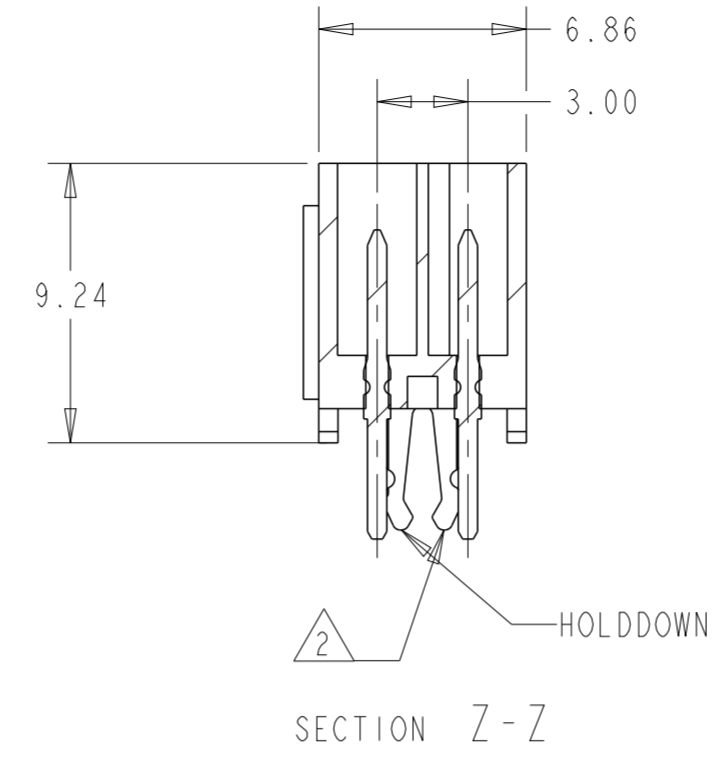
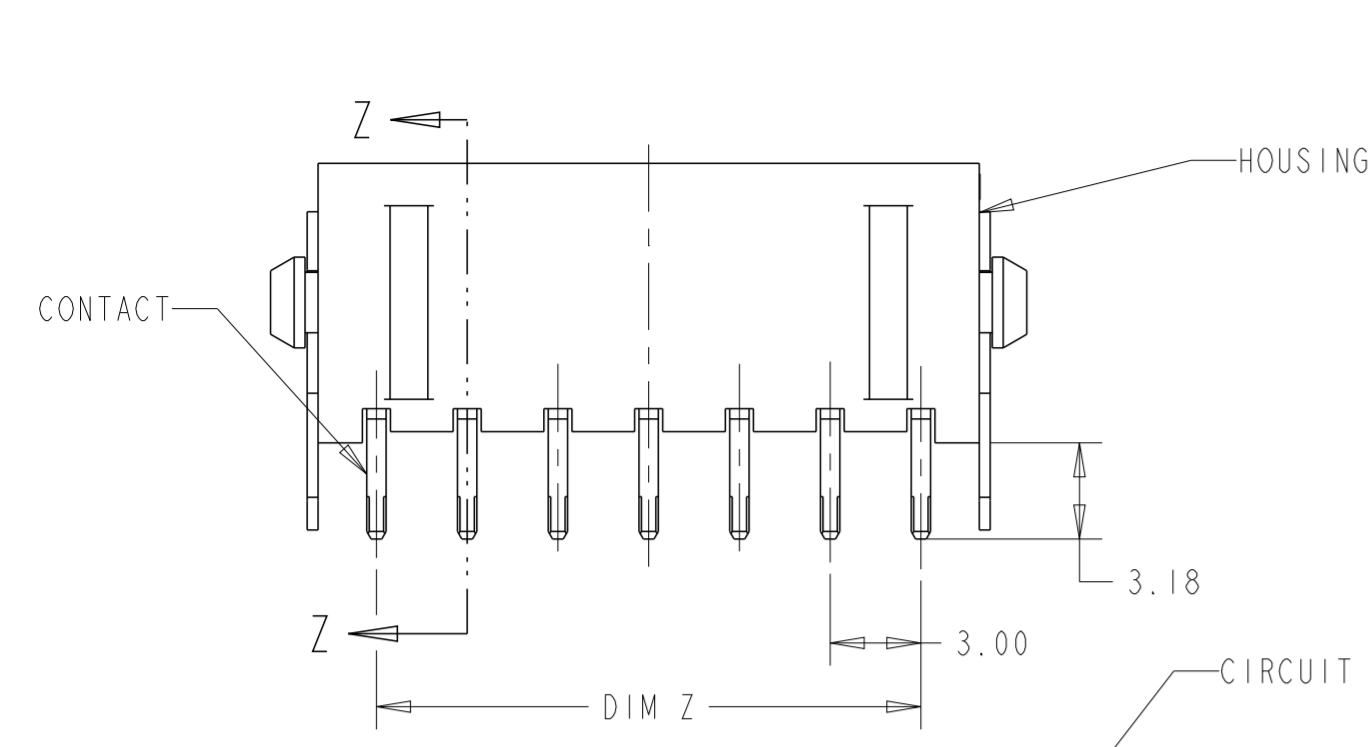


THIS DRAWING IS UNPUBLISHED. RELEASED FOR PUBLICATION
 © COPYRIGHT 20 BY - ALL RIGHTS RESERVED.

REVISIONS					
P	LTR	DESCRIPTION	DATE	DWN	APVD
	FI	REVISD PER ECR-16-011494	21JUN2017	NK	CX



FINISH	DIM A	DIM Z	DIM Y	DIM X	NO. OF POSN.	PART NUMBER
4	40.00	33.00	37.30	36.86	24	5-794682-4
4	37.00	30.00	34.30	33.86	22	5-794682-2
4	34.00	27.00	31.30	30.86	20	5-794682-0
4	31.00	24.00	28.30	27.86	18	4-794682-8
4	28.00	21.00	25.30	24.86	16	4-794682-6
4	25.00	18.00	22.30	21.86	14	4-794682-4
4	22.00	15.00	19.30	18.86	12	4-794682-2
4	19.00	12.00	16.30	15.86	10	4-794682-0
4	16.00	9.00	13.30	12.86	8	3-794682-8
4	13.00	6.00	10.30	9.86	6	3-794682-6
4	10.00	3.00	7.30	6.86	4	3-794682-4
4	7.00	-	4.30	3.86	2	3-794682-2

SUPERSEDED BY 5-794682-4	1	40.00	33.00	37.30	36.86	24	-2-794682-4-
SUPERSEDED BY 5-794682-2	1	37.00	30.00	34.30	33.86	22	-2-794682-2-
SUPERSEDED BY 5-794682-0	1	34.00	27.00	31.30	30.86	20	-2-794682-0-
SUPERSEDED BY 4-794682-8	1	31.00	24.00	28.30	27.86	18	+794682-8-
SUPERSEDED BY 4-794682-6	1	28.00	21.00	25.30	24.86	16	+794682-6-
SUPERSEDED BY 4-794682-4	1	25.00	18.00	22.30	21.86	14	+794682-4-
SUPERSEDED BY 4-794682-2	1	22.00	15.00	19.30	18.86	12	+794682-2-
SUPERSEDED BY 4-794682-0	1	19.00	12.00	16.30	15.86	10	+794682-0-
SUPERSEDED BY 3-794682-8	1	16.00	9.00	13.30	12.86	8	-794682-8-
SUPERSEDED BY 3-794682-6	1	13.00	6.00	10.30	9.86	6	-794682-6-
SUPERSEDED BY 3-794682-4	1	10.00	3.00	7.30	6.86	4	-794682-4-
SUPERSEDED BY 3-794682-2	1	7.00	-	4.30	3.86	2	-794682-2-

1 MATERIAL: HOUSING - NYLON, UL 94V-0, BLACK.
 CONTACT - BRASS.
 0.000762 MINIMUM GOLD OVER 0.00254
 MINIMUM NICKEL ON MATING AREA. 0.00254
 TIN-LEAD MINIMUM OVER 0.00254 NICKEL
 MINIMUM ON SOLDER TAILS.
 HOLDDOWNS: PHOSPHOR BRONZE, .00254 TIN-LEAD.

2 MAXIMUM INSERTION 30 LBS.

3 RECOMMENDED BOARD THICKNESS 1.57.

4 MATERIAL: HOUSING - NYLON, UL 94V-0, BLACK.
 CONTACT - BRASS.
 0.000762 MINIMUM GOLD OVER 0.00254
 MINIMUM NICKEL ON MATING AREA. 0.00254
 MATTE TIN MINIMUM OVER 0.00254 NICKEL
 MINIMUM ON SOLDER TAILS.
 HOLDDOWNS: PHOSPHOR BRONZE, .00254 MATTE TIN.

5 CIRCUIT NUMBER 1 IS LOCATED AT THE BOTTOM RIGHT
 WITH THE LATCH-LOCK ON TOP LOOKING INTO THE CAVITIES

RECOMMENDED MOUNTING HOLE PATTERN
 SCALE 5:1

THIS DRAWING IS A CONTROLLED DOCUMENT.

DIMENSIONS: mm [INCHES]	TOLERANCES UNLESS OTHERWISE SPECIFIED: 0 PLC ± 1 PLC ± 2 PLC ±0.20(.008) 3 PLC ± 4 PLC ± ANGLES ± FINISH	DWN B. HAYMAKER 16AUG99 CHK K. COBLE 16AUG99 APVD K. COBLE 16AUG99	TE Connectivity	
MATERIAL SEE TABLE	SEE TABLE	PRODUCT SPEC APPLICATION SPEC WEIGHT	NAME VERTICAL HEADER ASSEMBLY, THRU HOLE, 30 GOLD, DUAL ROW, MICRO MATE-N-LOK™ SIZE A2 CAGE CODE 00779 DRAWING NO. C-794682 RESTRICTED TO	
CUSTOMER DRAWING		SCALE 4:1	SHEET 1	REV FI

Mouser Electronics

Authorized Distributor

Click to View Pricing, Inventory, Delivery & Lifecycle Information:

[TE Connectivity:](#)

[4-794682-0](#)