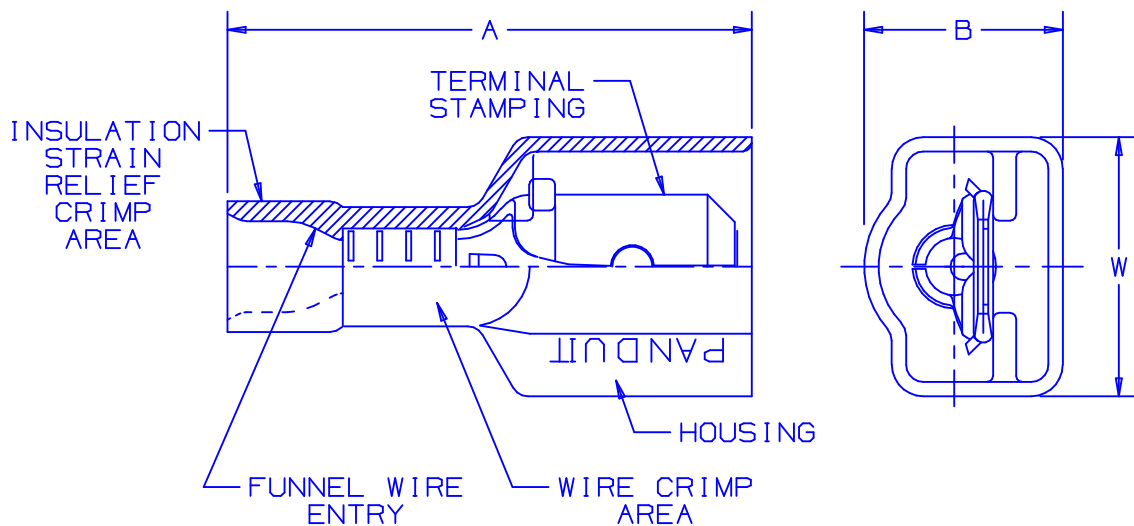
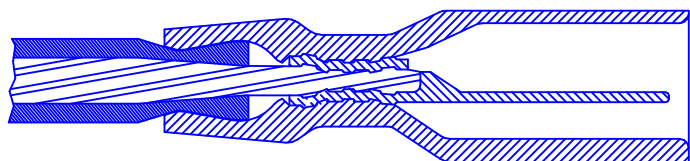


THIS COPY IS PROVIDED ON A RESTRICTED BASIS AND IS NOT TO BE USED IN ANY WAY DETRIMENTAL TO THE INTERESTS OF PANDUIT CORP.



NOTES:

1. USED FOR:
 - A. 600V MAX VOLTAGE RATING
 - B. 221°F (105°C) MAX TEMP RATING
 - C. STRANDED COPPER WIRE ONLY
2. WIRE STRIP LENGTH: $9/32^{+1/32}_{-0}$ (7.1^{+0.8}₋₀)
3. MATERIAL:
 - A. STAMPING: NICKEL PLATED BRASS
 - B. HOUSING: PREMIUM GRADE NYLON FOR SUPERIOR STRAIN RELIEF INSULATION CRIMPING
4. PACKAGING:
 - A. STD: -L = 50
 - B. BULK: -D = 500
5. DIMENSIONS IN BRACKETS ARE IN MILLIMETERS OR mm²



SECTION VIEW OF CRIMPED DISCONNECT

PART NUMBER		TAB SIZE	WIRE RANGE AWG (mm ²)	COLOR	MAX WIRE INSULATION DIAMETER	MIN WIRE INSULATION DIAMETER	DIMENSIONS in			CRIMP TOOLS
PREFIX	PK						A ^{±.03} (.8)	B ^{±.02} (.5)	W ^{±.02} (.5)	
DPF18-250F1MB	-L -D	.250 X .032 (6,3 X 0,8)	22-18 (0,5-1,0)	RED	.133 (3,38)	.080 (2,03)	.92 (23,4)	.34 (8,6)	.46 (11,7)	CT-520 CT-1525
DPF14-250F1MB	-L -D	.250 X .032 (6,3 X 0,8)	16-14 (1,5-2,5)	BLUE	.156 (3,96)	.090 (2,29)	.92 (23,4)	.34 (8,6)	.46 (11,7)	



A41512_05

05	7/03	KLFU		UPDATED DRAWING; WIRE RANGE WAS 0,5-1,5 ADDED CT-1525 TO TOOL CHART						PANDUIT CORP. TINLEY PARK, ILLINOIS DISCOGRIP™ LOOSE PIECE PREMIUM NYLON FULLY INSULATED UNIVERSAL MALE DISCONNECT .250 X .032	
04	1/01	RM	SKB	FILESPEC WAS N41512AA_PCD_03	8933	CCH	JAC				
03	10/98	JD		MATERIAL WAS TIN PLATED	07642						
02	10/96	TM	RS	UPDATED NOTES AND DIMENSIONS	05137	DH	LA				
REV	DATE	BY	CHK	DESCRIPTION	ECN	QA	PM	SUP	CUST		APP
											DRAWN BY KC CHK'D SCALE DRAWING NO A41512

Mouser Electronics

Authorized Distributor

Click to View Pricing, Inventory, Delivery & Lifecycle Information:

Panduit:

[DPF18-250FIMB-D](#) [DPF14-250FIMB-D](#) [DPF18-250FIMB-L](#)