

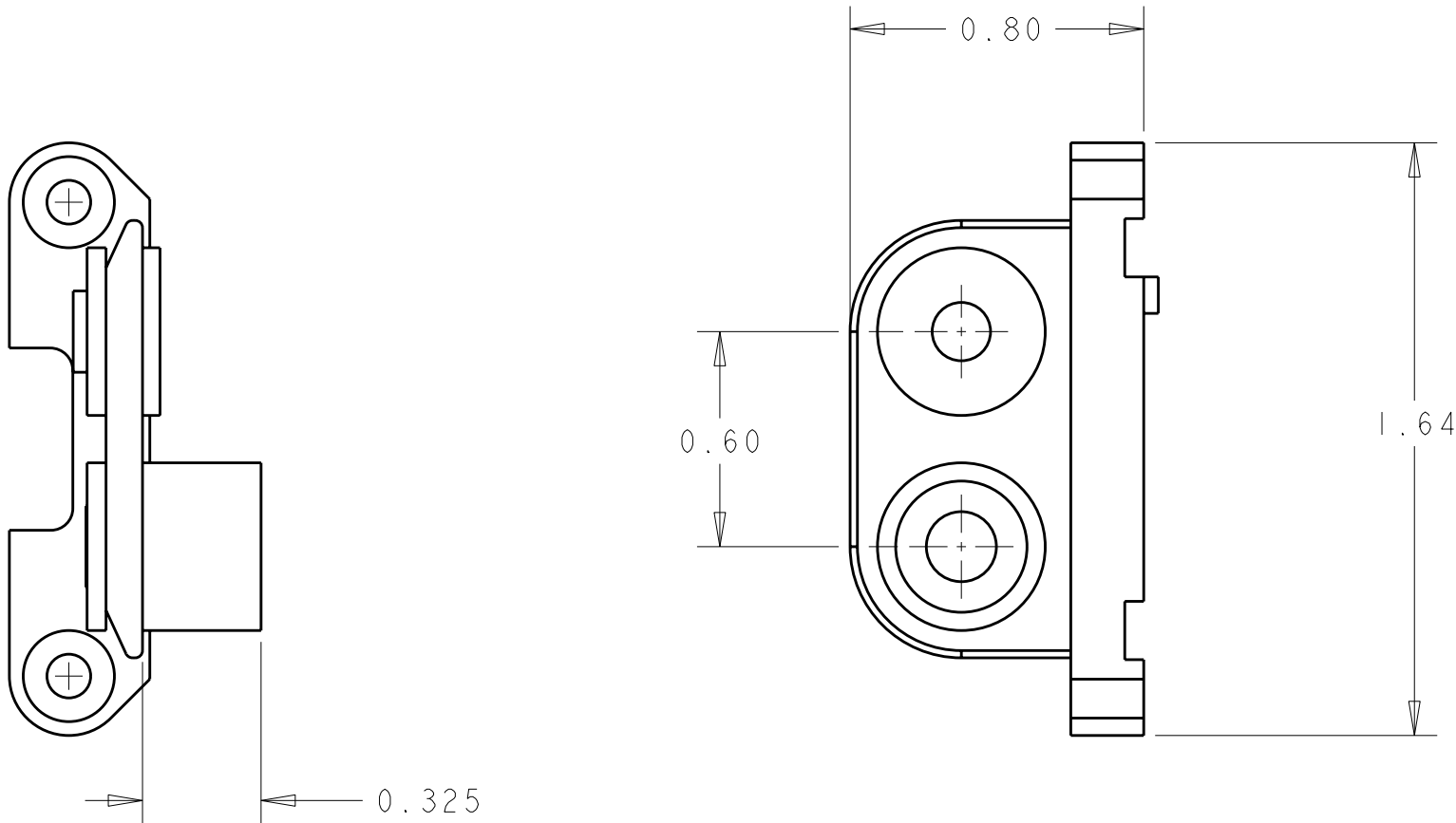
4

3

2

1

LOC	DIST	REVISIONS					
		P	LTR	DESCRIPTION	DATE	DWN	APVD
-	-		A	NEW RELEASE	24OCT2008	CR	DO



- PART NUMBER CHANGES AND/OR DESIGN CHANGES AFFECTING INTERCHANGEABILITY REQUIRE PRIOR TYCO ELECTRONICS APPROVAL AND AUTHORIZATION BY REVISION TO THIS DRAWING
- ITEMS PROVIDED TO THIS SPECIFICATION TO BE PERMANENTLY IDENTIFIED PER THE FOLLOWING IDENTIFIER LABEL

TYCO ELECTRONICS P/N

XXXXXXXX-X

DATE CODE (e.g. 0106)

XXXX

YEAR

WEEK

AS SHOWN	6648254-1
DESCRIPTION	PART NO.

THIS DRAWING IS A CONTROLLED DOCUMENT FOR TYCO ELECTRONICS CORPORATION. IT IS SUBJECT TO CHANGE AND THE CONTROLLING ENGINEERING ORGANIZATION SHOULD BE CONTACTED FOR THE LATEST REVISION.		DWN C. ROHLER 24OCT2008	<div><div></div><div>Tyco Electronics</div><div>Harrisburg, PA 17105-3608</div></div>			
DIMENSIONS: INCHES		CHK D. ORRIS 24OCT2008				
		APVD M. PERCHERKE 24OCT2008	NAME END CAP, FLOAT MOUNT GUIDE BUSHING, MODULE L DOMINO			
		PRODUCT SPEC -				
TOLERANCES UNLESS OTHERWISE SPECIFIED:		APPLICATION SPEC -	SIZE A3			
0 PLC ±- 1 PLC ±- 2 PLC ±.02 3 PLC ±.010 4 PLC ±- ANGLES ±.5		WEIGHT -				
MATERIAL -		FINISH -	CAGE CODE 00779			
			DRAWING NO C-6648254			
			RESTRICTED TO -			
		CUSTOMER DRAWING	SCALE 2:1			
			SHEET 1			
			OF 1			
			REV A			

ELCON

DOMINO

Mouser Electronics

Authorized Distributor

Click to View Pricing, Inventory, Delivery & Lifecycle Information:

[TE Connectivity:](#)

[6648254-1](#)