

4

3

2

1

THIS DRAWING IS UNPUBLISHED.

RELEASED FOR PUBLICATION

© COPYRIGHT

ALL RIGHTS RESERVED.

LOC

DIST


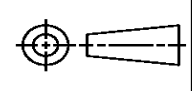
REVISIONS

P	LTR	DESCRIPTION	DATE	DWN	APVD
	A1	ECR-14-002791	25FEB2014	GK	HMR

REPLACED BY OCEAN STYLE APPLICATOR PART
NUMBER 2151547-1

FOR REPLACEMENT PARTS FOR APPLICATOR 1855508
REFER TO ADDITIONAL PAGE(S). SPARE PARTS KIT (IF LISTED)
WILL REMAIN AVAILABLE.

THE REPLACEMENT OCEAN STYLE APPLICATOR HAS THE
SAME TERMINATOR/PRESS INTERFACE AS APPLICATOR
1855508

THIS DRAWING IS A CONTROLLED DOCUMENT.		DWN	GOPALAKRISHNA HV		 TE Connectivity				
DIMENSIONS:		CHK	RAGHAVENDRA						
		TOLERANCES UNLESS OTHERWISE SPECIFIED:		NAME					
		0 PLC ±		FINE ADJUST SIDE FEED HDM					
		1 PLC ±		APPLICATOR					
2 PLC ±		APVD		RAGHAVENDRA		SIZE	CAGE CODE	DRAWING NO	RESTRICTED TO
3 PLC ±		PRODUCT SPEC							
4 PLC ±		APPLICATION SPEC							
ANGLES ±		WEIGHT		A 3					
FINISH		CUSTOMER DRAWING		SCALE		SHEET 1 OF 2		REV A1	

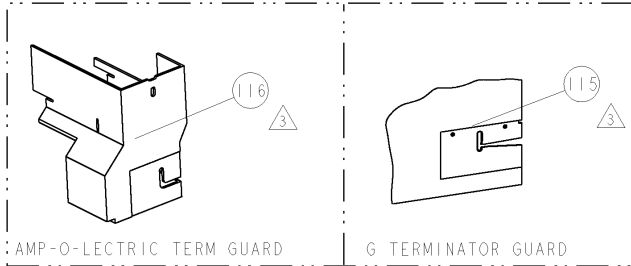
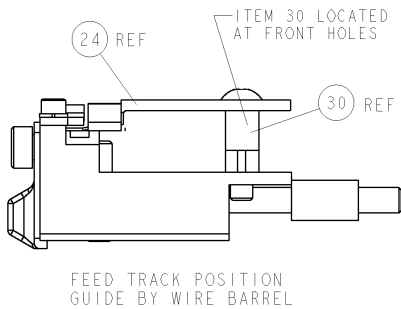
THIS DRAWING IS UNPUBLISHED.			RELEASED FOR PUBLICATION			20	
(C) COPYRIGHT 20			BY TCO ELECTRONICS CORPORATION, ALL RIGHTS RESERVED.				
PART NUMBER	REV	FIRST USED	POWER UNIT	FEED TYPE	DESCRIPTION		
1855508-1	A	122500-1	LEADMAKER	POST FEED	CUTS CARRIER		
1855508-2	A	565435-5	BENCH MODEL K	PRE FEED	CUTS CARRIER		
1855508-3	A	354500-1	BENCH MODEL G	PRE FEED	CUTS CARRIER		
1855508-6	A	122500-1	LEADMAKER	POST FEED	CONTINUOUS CARRIER		
7-1855508-7	A	-	-	-	SPARE PARTS		

- △ RECOMMENDED SPARE PARTS
△ GREASE LIGHTLY
△ GUARD MUST BE IN PLACE WHEN OPERATING APPLICATOR IN A BENCH MACHINE
△ GIVEN CRIMP HEIGHTS AND WIRE SIZES ARE FOR SET UP ONLY.

USE CRIMP HEIGHT FORMULA GIVEN ON TERMINAL CUSTOMER DRAWING FOR SPECIFIC WIRE SIZES.

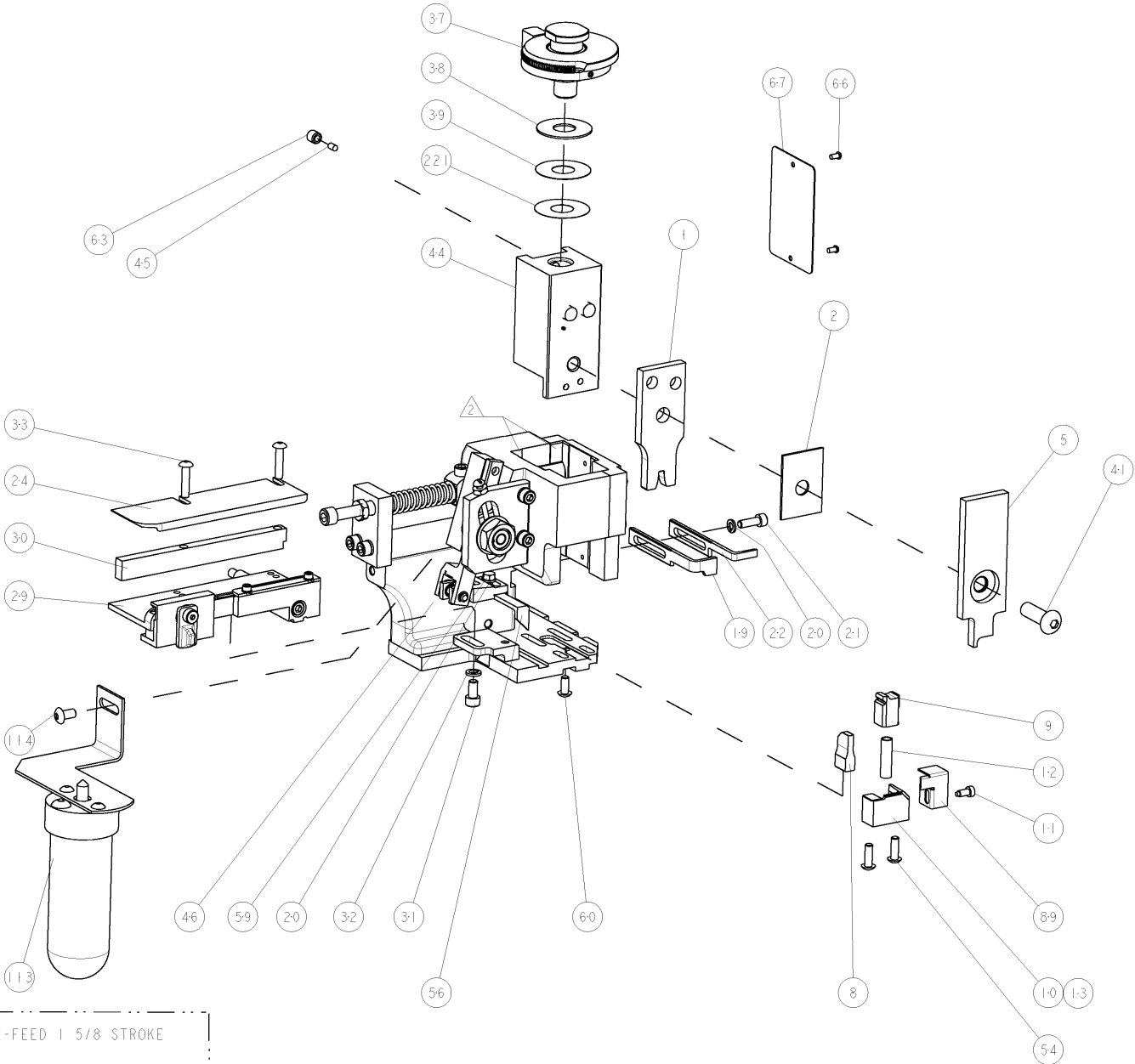
5. TERMINAL LUBRICANT IS RECOMMENDED.

* WARNING
ON INSTALLATION, SET WIRE DISC TO LARGEST WIRE SIZE SETTING. USE OF SETTINGS BELOW MIN. REQUIRED CRIMP HEIGHT SETTING WILL CAUSE DAMAGE TO CRIMP TOOLING.

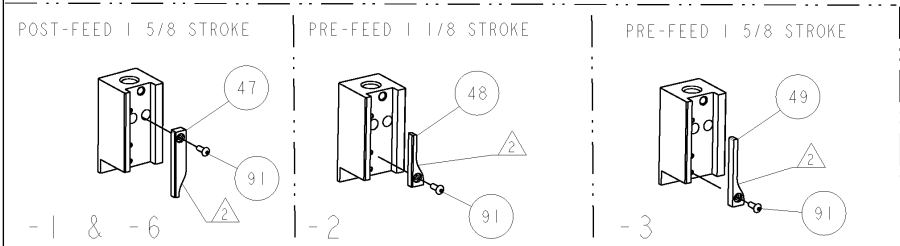



TERMINAL NAME: SPLICE					
TE PN	-	TE TERMINAL - TE CRIMP SPECS			
485043/4	-	CRIMP HEIGHT/4		WIRE SIZE	WIRE SET UP/4
-	-	2.59mm+ .05/- .05[.102+ .002/- .002]		7751-9000 CMA	2 X 2.00mm2
-	-	2.44mm+ .05/- .05[.096+ .002/- .002]		6501-7750 CMA	(1) 1.50mm2 & (1) 2.00mm2
-	-	2.31mm+ .05/- .05[.091+ .002/- .002]		5251-6500 CMA	(1) 1.25mm2 & (1) 1.50mm2
-	-	2.16mm+ .05/- .05[.085+ .002/- .002]		4000-5250 CMA	2 X 1.25mm2
-	-	CRIMP	SIZE	TYPE	RANGE
-	-	WIRE	3.56mm [1.40]	F	4000-9000 CMA
-	-	INSUL	-	-	-
WIRE STRIP LENGTH 6.68-7.06	TERM APPL SPEC 114-2088	FEED 15.75	APPLICATOR INSTRUCTIONS 408-8040		SET UP GAGE 458637-1

LOC		DIST		REVISIONS			
A	66	P	LTR	DESCRIPTION	DATE	OWN	APVD
		A		RELEASED	04JUN2009	LG	TE



-	1	1	1	1	-	469367-2	SHIM	221
-	-	-	REF	-	..	455749-1	GUARD WINDOW	116
-	-	-	REF	-	..	679532-1	INSERT, GUARD	115
-	-	-	1	-	-	2-21002-6	SCR, BTN SKT HD CAP 10-32 X .375	114
-	-	-	1	-	..	1-465184-0	LUBRICATOR ASSY	113
-	1	1	1	1	-	1-21002-7	SCR, BTN SKT HD CAP 6-32 X .375	91
-	1	1	1	1	-	318563-1	GUARD, FRONT CHIP	89
-	1	1	1	1	-	4088040	SF APPL INST 408-8040	72
-	1	1	1	1	-	217238-1	GENERAL INSTRUCTION PKG	71
-	1	1	1	1	-	461264-5	PLATE, IDENTIFICATION	67
-	2	2	2	2	-	21017-2	SCREW, DRIVE	66
-	1	1	1	1	-	21009-2	SCR, SET, SELF LOCKING 1/4-20 X .250	63
-	1	1	1	1	-	22733-8	SCR, BHSC, SELF-LOCKING, 8-32 X .375	60
-	1	1	1	1	-	2-22603-0	SCR, HEX HD CAP 8-32 X .312	59
-	1	1	1	1	-	458537-2	PAWL, FEED	56
-	2	2	2	2	-	2-21002-2	SCR, BTN SKT HD CAP 8-32 X .500	54
-	-	1	-	-	..	690602-6	CAM, PRE FEED, 1 5/8	49
-	-	-	1	-	..	690602-5	CAM, PRE FEED, 1 1/8	48
-	1	-	-	-	-	690501-4	CAM, POST-FEED 1 5/8	47
-	1	1	1	1	-	459456-1	APPL. BASIC SUB ASSY (SIDE WISE MOCA)	46
-	1	1	1	1	-	690191-1	PLUG, NYLON	45
-	1	1	1	1	-	1-455673-5	RAM, SIDE FEED	44
-	1	1	1	1	-	7-21002-9	SCR, BTN SKT HD CAP 5/16-24 X 1.00	41
-	1	1	1	1	-	690125-1	SHIM SUB-ASSY	39
-	1	1	1	1	-	469367-7	SHIM	38
-	1	1	1	1	-	879103-4	FINE ADJUST HEAD ASSEMBLY	37
-	2	2	2	2	-	2-21002-4	SCR, BTN SKT HD CAP 8-32 X .750	33
-	1	1	1	1	-	21024-5	WASHER, SPRG LOCK, REG NO 10	32
-	1	1	1	1	-	3-21000-4	SCR, SKT HD CAP 10-32 X .375	31
-	1	1	1	1	-	1-1320908-7	SPACER, STRIP GUIDE	30
-	1	1	1	1	-	1633091-1	ASSEMBLY, STRIP GUIDE	29
-	1	1	1	1	-	1320928-1	PLATE, STRIP GUIDE	24
-	1	-	-	-	-	690472-2	STRIPPER	22
-	1	1	1	1	-	2-21000-7	SCR, SKT HD CAP 8-32 X .500	21
-	2	2	2	2	-	21024-4	WASHER, SPRG LOCK, REG NO 8	20
-	-	1	1	-	-	691353-1	STRIPPER	19
-	1	-	-	-	-	679625-2	SHEAR HOLDER, FRONT (NO CUT)	13
-	1	1	1	1	-	3-22280-3	SPRING, COMPRESSION	12
-	1	1	1	1	-	690461-2	STOP, SHEAR	11
-	-	1	1	1	-	1-690459-0	SHEAR HOLDER, FRONT	10
-	1	1	1	1	-	462006-6	FLOATING SHEAR, FRONT	9
-	1	1	1	1	-	9-683403-1	ANVIL, COMBINATION	8
-	-	-	-	-	..	-	-	6
-	1	1	1	1	-	3-455889-8	DEPRESSOR, SHEAR	5
-	-	-	-	-	..	-	-	4
-	-	-	-	-	..	-	-	3
-	1	1	1	1	-	1-455888-0	SPACER, CRIMPER	2
-	1	1	1	1	-	4-1673600-7	CRIMPER, WIRE	1



THIS DRAWING IS A PROPERTY OF TYPHO ELECTRONICS. IT IS TO BE USED ONLY FOR THE PURPOSES AND DATES SPECIFIED. IT IS NOT TO BE REPRODUCED OR COPIED IN ANY MANNER WITHOUT THE WRITTEN PERMISSION OF TYPHO ELECTRONICS. SHOULD BE CONTROLLED FOR THE LATEST VERSION.				DWN L. GROSS 04MAY2009		Tyco Electronics Tyco Electronics Harrisburg, PA 17105-3668		
DIMENSIONS: INCHES		TOLERANCES UNLESS OTHERWISE SPECIFIED:		CWN T. ELBIN 04MAY2009		NAME	FINE ADJUST SIDE FEED HDM APPLICATOR	
		0 PLC ±.01 1 PLC ±.01 3 PLC ±.001 4 PLC ±.0001 6 PLCS ±.0001		APPL N. DEMING 04MAY2009				
				PRODUCT SPEC - APPLICATION SPEC - WEIGHT -				
MATERIAL	-	FINISH	-	CUSTOMER DRAWING	SIZE	CASE CODE	DRAWING NO	RESTRICTED TO
				A	00779	C	1855508	
				SCALE 3:5 SHEET 1 OF 1 REV A				

Mouser Electronics

Authorized Distributor

Click to View Pricing, Inventory, Delivery & Lifecycle Information:

[TE Connectivity:](#)

[1855508-1](#)