

# Customer Information Sheet

DRAWING No.: M80-705XXXX

SHEET 2 OF 2

IF IN DOUBT - ASK

©

NOT TO SCALE

THIRD ANGLE PROJECTION

ALL DIMENSIONS IN mm

ORDER CODE:

**M80-705XXXX**

TOTAL No. OF CONTACTS

27, 36, 45, 51, 63

FINISH:

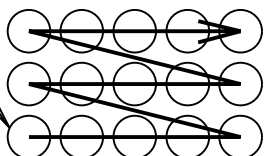
05 - GOLD BODY, GOLD CLIP

POTTING WALLS

BLANK - POTTING WALLS

A = REMOVE POTTING WALLS

CONTACT No. 1  
(SEE NOTE 1)



SPECIFICATION:

MATERIALS:

MOULDING = POLYAMIDE 46 UL94V-0

CONTACTS:

SHELL = COPPER ALLOY

CLIP = BERYLLIUM COPPER

JACKSCREWS, CIRCLIPS = STAINLESS STEEL

FINISH:

05 = 0.30µ CLIP, 0.25 - 0.30µ GOLD SHELL

ELECTRICAL:

CURRENT RATING AT 25°C = 3.0A MAX

CURRENT RATING AT 85°C = 2.2A MAX

VOLTAGE PROOF = 360V AC/DC

CONTACT RESISTANCE (INITIAL) = 20mΩ MAX

CONTACT RESISTANCE (AFTER CONDITIONING) = 25mΩ MAX

INSULATION RESISTANCE (INITIAL) = 1000MΩ MIN

INSULATION RESISTANCE (AFTER CONDITIONING) = 100MΩ MIN

MECHANICAL:

DURABILITY = 500 OPERATIONS

INSERTION FORCE = 2.8N MAX, 1.0N MIN

WITHDRAWAL FORCE = 1.8N MAX, 0.2N MIN

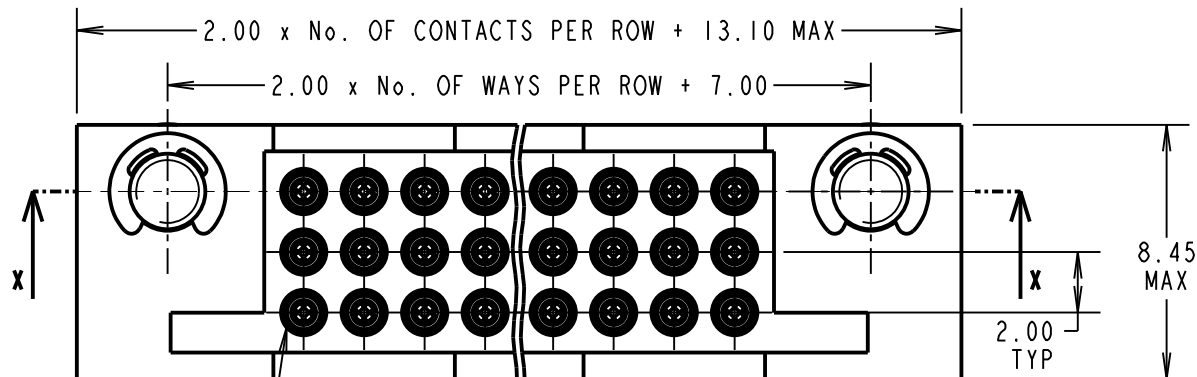
ENVIRONMENTAL:

TEMPERATURE RANGE = -55°C TO +125°C

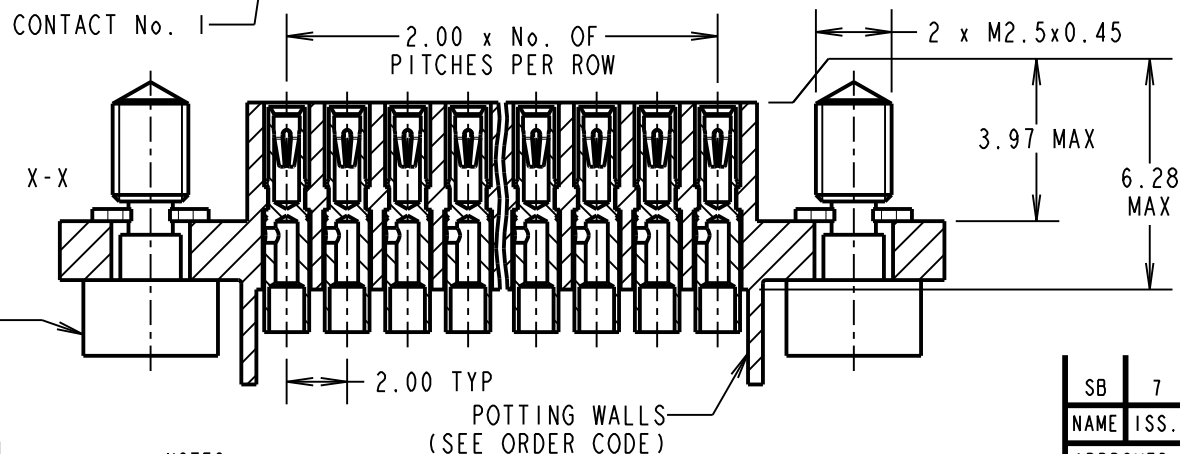
PACKING:

TRAYS

FOR COMPLETE SPECIFICATION, SEE COMPONENT SPECIFICATION C017XX (LATEST ISSUE)



SECTION X-X



POTTING WALLS  
(SEE ORDER CODE)

NOTES:

1. FROM No. 1 POSITION, CONTACTS NUMBERED IN SEQUENCE FROM LEFT TO RIGHT AND FROM BOTTOM ROW TO TOP ROW (LOOKING ON MATING FACE).
2. RECOMMENDED WIRE TYPE = BS 3G 210 TYPE A, PTFE INSULATED, 24 - 28AWG. MAX INSULATION DIAMETER =  $\varnothing$ 1.10mm. STRIP WIRE BY 2.00mm.
3. RECOMMENDED HAND CRIMP TOOL = M22520/2-01, WITH POSITIONER T5747. REFER TO CRIMPING INSTRUCTION SHEET IS-01 FOR COMPLETE CRIMPING INSTRUCTIONS.
4. CONNECTOR SUPPLIED WITH CONTACTS LOOSE.
5. CONTACT INSERTION AND EXTRACTION TOOL = Z80-280. REFER TO INSTRUCTION SHEET IS-25 FOR ASSEMBLY INSTRUCTIONS.

SB	7	17.02.12	11650
NAME	ISS.	DATE	C/NOTE
APPROVED: S.BENNETT			
CHECKED: S.FLOWER			
DRAWN: I. SANDY			
CUSTOMER REF.:			
ASSEMBLY DRG:			

## HARWIN

www.harwin.com  
technical@harwin.com

THIS DRAWING AND ANY INFORMATION OR DESCRIPTIVE MATTER SET OUT HEREON ARE CONFIDENTIAL AND COPYRIGHT PROPERTY OF THE HARWIN GROUP AND MUST NOT BE DISCLOSED, LOANED, COPIED OR USED FOR MANUFACTURING, TENDERING OR FOR ANY OTHER PURPOSE WITHOUT THEIR WRITTEN PERMISSION.

TOLERANCES

X. =  $\pm$ 1mm  
X.X =  $\pm$ 0.25mm  
X.XX =  $\pm$ 0.10mm  
X.XXX =  $\pm$ 0.01mm

ANGLES =  $\pm$ 5°  
UNLESS STATED

MATERIAL:

SEE ABOVE

FINISH: SEE ABOVE

S/AREA: mm<sup>2</sup>

TITLE: 3-ROW DATAMATE  
FEMALE CRIMP SOCKET ASSY  
(SMALL BORE) WITH JACKSCREWS

DRAWING NUMBER:

**M80-705XXXX**

SHT  
2 OF 2

# Mouser Electronics

Authorized Distributor

Click to View Pricing, Inventory, Delivery & Lifecycle Information:

[Harwin:](#)

[M80-7052705](#) [M80-7054501](#) [M80-7054505](#) [M80-7056301](#) [M80-7055105](#) [M80-7055101](#) [M80-7056305](#) [M80-7052701](#) [M80-7053601](#) [M80-7053605](#)