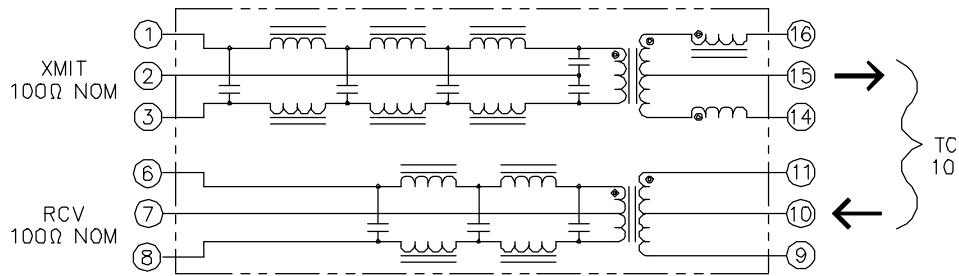


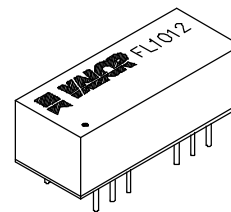
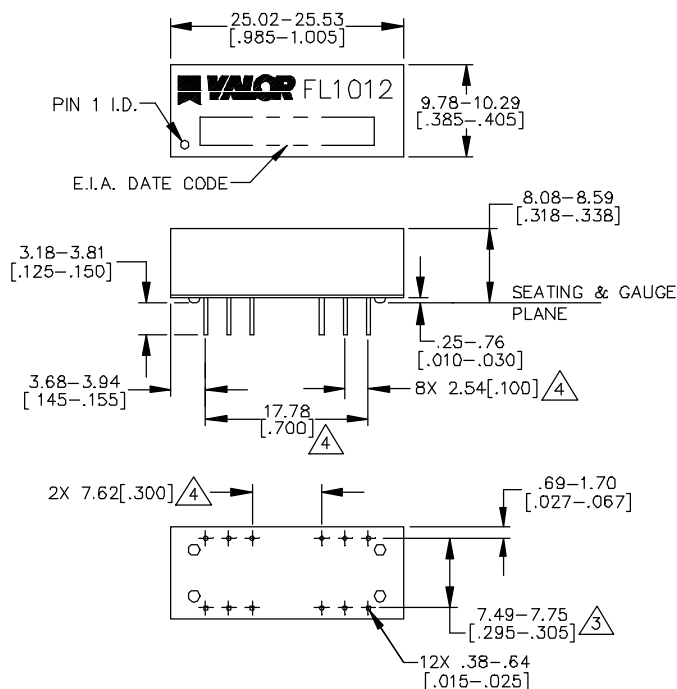
Electrical



ELECTRICAL SPECIFICATIONS @ 25°C

TYPE	TRANSMITTER FILTER: : 7 POLE,	RECEIVER FILTER: : 5 POLE, BALANCED LOW-PASS, 100Ω
*CUT-OFF FREQ	: 17MHz ± 1MHz	: 17MHz ± 1MHz
INSERTION LOSS (1-10MHZ)	: 1.0dB MAX	: 0.8dB MAX
*ATTENUATION@ 20MHz	: 7dB MIN	: 6dB MIN
@ 25MHz	: 19dB MIN	: 14dB MIN
@ 30MHz	: 30dB MIN	: 20dB MIN
@ 40MHz	: 32dB MIN	: 31dB MIN
HIPOT	: 1500VRMS FOR 1 MINUTE PINS 1,2 & 3 TO 14,15 & 16 5Ω MAX (14-15)	: 1500VRMS FOR 1 MINUTE PINS 6,7 & 8 TO 9,10 & 11 .5Ω MAX (6-7) .1Ω MAX (9-10)
DCR		: 30dB MIN
COMMON MODE		: 17dB MIN
REJECTION (30-100MHZ)	: 30dB MIN	
RETURN LOSS (5-10MHZ)	: 17dB MIN	
(MEASURED WITH SOURCE IMPEDANCE RANGING FROM 85-100Ω)		
	TRANSMITTER TO RECEIVER CHARACTERISTICS	
CROSS TALK ATTEN (1-10MHZ)	: BETWEEN CHANNELS : 200VRMS FOR 1 MINUTE	: 30dB MIN
*REFERENCED TO FILTER OUTPUT @ 5.0MHz.	PINS 1 & 3 TO 6 & 8 1 & 3 TO 9 & 11 6 & 8 TO 14 & 16	

Mechanical



WEBSITE www.valorinc.com E-MAIL marketing@valorinc.com

NORTH AMERICA
tel 1-800-31 VALOR
fax 619-537-2525

ASIA/PACIFIC
tel +852-2953-1000
fax +852-2953-1333

EUROPE
tel +44-1727-824 875
fax +44-1727-824 898

Mouser Electronics

Authorized Distributor

Click to View Pricing, Inventory, Delivery & Lifecycle Information:

Pulse:

[FL1012](#) [FL1012NL](#)