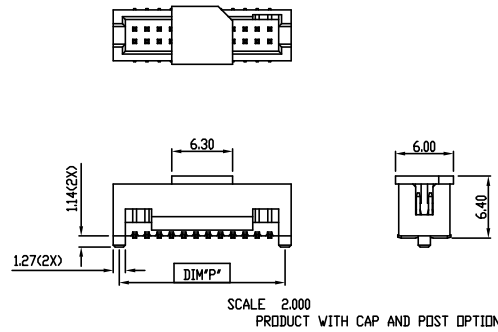
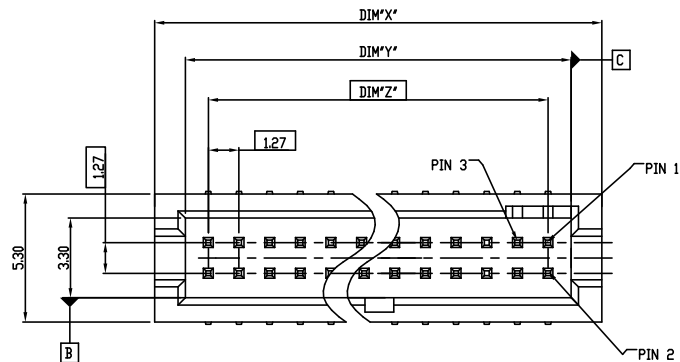
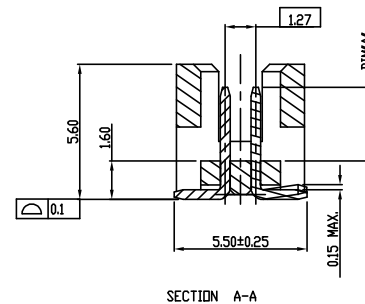
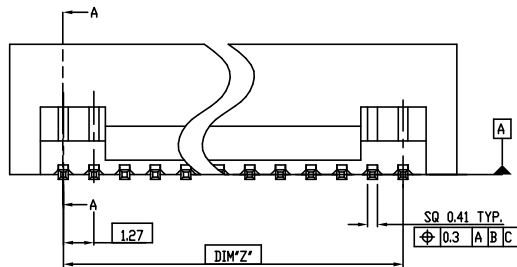


PART NO.
20021221

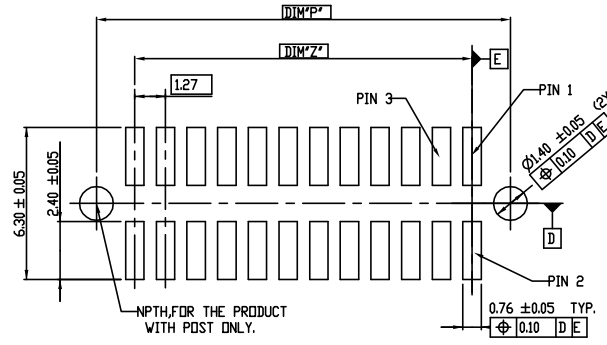


- NOTES:
- 1.MATERIAL:
HOUSING: HIGH TEMPERATURE THERMOPLASTIC, UL94-V0 BLACK.
TERMINAL: COPPER ALLDY
 - 2.ONLY SHOWN THE FEATURE OF THE ABSENT PIN,THE OTHER SPEC IS THE SAME AS THE FULL PIN PRODUCT.
 - 3.THE HOUSING WILL WITHSTAND EXPOSURE TO 260°C PEAK TEMPERATURE FOR 10 SECONDS IN A CONVECTION INFRA-RED OR VAPOR PHASE REFLOW OVEN.
 - 4.THIS PRODUCT MEETS EUROPEAN UNION DIRECTIVES AND OTHER COUNTRY REGULATIONS AS DESCRIBED IN GS-22-008.
 - 5.PRODUCT SPEC: GS-12-629
 - 6.PACKAGE SPEC: GS-14-1420
 - 7.THE METAL CAP IS OPTION AS CUSTOMER REQUIREMENT.
 - 8.20021221-00312CALF FOR CUSTOMER SPECIFIED WITH 0.76um MIN. Au AT CONTACT, 1.27um MIN. MATTE TIN AT TAIL.



mat'l. code				surface	tolerance	projection	product family		
				ISO 1302 ✓	ISO 406 ISO	1101	MINITEK127®		
				tolerances unless otherwise specified			title		
ltr	ecn no	dr	date	angles	linear	mm	SHROUDED HDR VT SMT		
N	ELX-N-23548	TIM	03/21/16		.0±.30				
P	ELX-N-24142	TIM	05/23/16		.00±.20				
R	ELX-N-30802	TONY	2018-07-26	0±2°	.000±.10	scale 1:1			
S	ELX-N-31947	TONY	2018-11-23	dr	ZK HU	08/07/12	dwg no		
				eng	ZK HU	08/07/12	sheet 1 of 3		
				chr	BIAN RICK	08/07/12	20021221		
				app	BIAN RICK	08/07/12	A3		
sheet index		revision	S	S	S		type Product Customer Drawing		
		sheet	1	2	3				

PART NO.	POS.	DIM'X'	DIM'Y'	DIM'Z'	DIM'P'
20021221-XX06XXLF	2 X 3	6.99	4.45	2.54	5.72
20021221-XX08XXLF	2 X 4	8.26	5.72	3.81	6.99
20021221-XX10XXLF	2 X 5	9.53	6.99	5.08	8.26
20021221-XX12XXLF	2 X 6	10.80	8.26	6.35	9.53
20021221-XX14XXLF	2 X 7	12.07	9.53	7.62	10.80
20021221-XX16XXLF	2 X 8	13.34	10.80	8.89	12.07
20021221-XX18XXLF	2 X 9	14.61	12.07	10.16	13.34
20021221-XX20XXLF	2 X 10	15.88	13.34	11.43	14.61
20021221-XX22XXLF	2 X 11	17.15	14.61	12.70	15.88
20021221-XX24XXLF	2 X 12	18.42	15.88	13.97	17.15
20021221-XX26XXLF	2 X 13	19.69	17.15	15.24	18.42
20021221-XX28XXLF	2 X 14	20.96	18.42	16.51	19.69
20021221-XX30XXLF	2 X 15	22.23	19.69	17.78	20.96
20021221-XX32XXLF	2 X 16	23.50	20.96	19.05	22.23
20021221-XX34XXLF	2 X 17	24.77	22.23	20.32	23.50
20021221-XX36XXLF	2 X 18	26.04	23.50	21.59	24.77
20021221-XX38XXLF	2 X 19	27.31	24.77	22.86	26.04
20021221-XX40XXLF	2 X 20	28.58	26.04	24.13	27.31
20021221-XX42XXLF	2 X 21	29.85	27.31	25.40	28.58
20021221-XX44XXLF	2 X 22	31.12	28.58	26.67	29.85
20021221-XX46XXLF	2 X 23	32.39	29.85	27.94	31.12
20021221-XX48XXLF	2 X 24	33.66	31.12	29.21	32.39
20021221-XX50XXLF	2 X 25	34.93	32.39	30.48	33.66
20021221-XX52XXLF	2 X 26	36.20	33.66	31.75	34.93
20021221-XX54XXLF	2 X 27	37.47	34.93	33.02	36.20
20021221-XX56XXLF	2 X 28	38.74	36.20	34.29	37.47
20021221-XX58XXLF	2 X 29	40.01	37.47	35.56	38.74
20021221-XX60XXLF	2 X 30	41.28	38.74	36.83	40.01
20021221-XX62XXLF	2 X 31	42.55	40.01	38.10	41.28
20021221-XX64XXLF	2 X 32	43.82	41.28	39.37	42.55
20021221-XX66XXLF	2 X 33	45.09	42.55	40.64	43.82
20021221-XX68XXLF	2 X 34	46.36	43.82	41.91	45.09
20021221-XX70XXLF	2 X 35	47.63	45.09	43.18	46.36
20021221-XX72XXLF	2 X 36	48.90	46.36	44.45	47.63
20021221-XX74XXLF	2 X 37	50.17	47.63	45.72	48.90
20021221-XX76XXLF	2 X 38	51.44	48.90	46.99	50.17
20021221-XX78XXLF	2 X 39	52.71	50.17	48.26	51.44
20021221-XX80XXLF	2 X 40	53.98	51.44	49.53	52.71
20021221-XX82XXLF	2 X 41	55.25	52.71	50.80	53.98
20021221-XX84XXLF	2 X 42	56.52	53.98	52.07	55.25
20021221-XX86XXLF	2 X 43	57.79	55.25	53.34	56.52
20021221-XX88XXLF	2 X 44	59.06	56.52	54.61	57.79
20021221-XX90XXLF	2 X 45	60.33	57.79	55.88	59.06
20021221-XX92XXLF	2 X 46	61.60	59.06	57.15	60.33
20021221-XX94XXLF	2 X 47	62.87	60.33	58.42	61.60
20021221-XX96XXLF	2 X 48	64.14	61.60	59.69	62.87
20021221-XX98XXLF	2 X 49	65.41	62.87	60.96	64.14
20021221-XXA0XXLF	2 X 50	66.68	64.14	62.23	65.41



RECOMMENDED PCB LAYOUT
SCALE 5.000

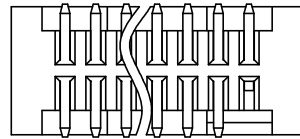
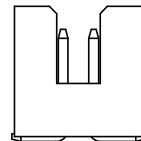
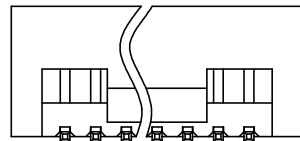
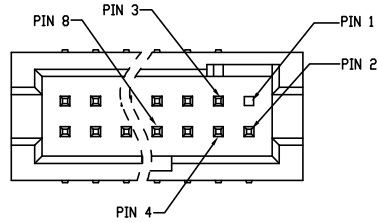
20021221-X X X X X X X X LF

- LEAD FREE
- PLATING CODE(OTHER SEE NOTES.8)
- 1: GOLD FLASH AT CONTACT, 1.27um MIN. MATTE TIN AT TAIL
- 2: GOLD FLASH AT CONTACT, GOLD FLASH AT TAIL
- 4: 0.25um Au MIN. AT CONTACT, 1.27um MIN.MATTE TIN AT TAIL
- 5: 0.25um Au MIN. AT CONTACT, GOLD FLASH AT TAIL
- 6: 0.38um GXT MIN. AT CONTACT, 1.27um MIN.MATTE TIN AT TAIL
- 7: 0.38um GXT MIN. AT CONTACT, GOLD FLASH AT TAIL
- 8: 0.76um GXT MIN. AT CONTACT, 1.27um MIN.MATTE TIN AT TAIL
- 9: 0.76um GXT MIN. AT CONTACT, GOLD FLASH AT TAIL
- PACKING STYLE
- T: TUBE
- D: TUBE + CAP
- C: TAPE & REEL + CAP
- Q: TAPE & REEL W/D CAP
- PIN NO. SEE TABLE
- SELECTED LOADED
- 0: FULLY LOADED, OTHER SEE SHEET 3 NOTE 2
- MATING LENGTH(DIM'A')
- 0: 3.05MM
- POST OPTION
- 0: WITHOUT POST
- 1: WITH POST

mat'l. code		surface		tolerance		projection		product family	
		ISO 1302 ✓		ISO 406 ISO		1101		MINITEK127®	
ltr		ecn no		dr		date		title	
								SHROUDED HDR VT SMT	
		angles		linear		mm		dwg no	
		0±2°		.0±.30		scale 1:1		sheet 2 of 3	
				.00±.20				size	
				.000±.10				A3	
		dr		ZK HU		08/07/12		20021221	
		eng		ZK HU		08/07/12		Product Customer Drawing	
		chr		BIAN RICK		08/07/12			
		app		BIAN RICK		08/07/12			
sheet		revision							
index		sheet							

Amphenol FCI

© 2016 AFCI



PART NUMBER	AMOUNT OF PINS	PIN FREE LEADED
20021221-XX108XXLF	7	PIN #3
20021221-XX110XXLF	9	PIN #3
20021221-XX214XXLF	13	PIN #1
20021221-XX206XXLF	5	PIN #1
20021221-XX312XXLF	11	PIN #8
20021221-XX410XXLF	9	PIN #4

PART NUMBER 20021221-XX214XXLF
REMOVE PIN 1 FOR REFERENCE

mat'l. code		surface		tolerance		projection		product family	
ISO 1302		ISO 406		ISO 1101		1101		MINITEK127®	
tolerances unless otherwise specified		tolerances unless otherwise specified		tolerances unless otherwise specified		mm		title	
angles		linear		.0±.30		mm		SHROUDED HDR VT SMT	
0°±2'		.000±.10		scale 1:1					
dr		ZK HU		08/07/12				dwg no	
eng		ZK HU		08/07/12				sheet 3 of 3	
chr		BIAN RICK		08/07/12				size	
app		BIAN RICK		08/07/12				A3	
sheet index		revision sheet						type	
								Product Customer Drawing	

Mouser Electronics

Authorized Distributor

Click to View Pricing, Inventory, Delivery & Lifecycle Information:

[FCI / Amphenol:](#)

<u>20021221-00006T4LF</u>	<u>20021221-00008T4LF</u>	<u>20021221-00010T4LF</u>	<u>20021221-00012T4LF</u>	<u>20021221-00014T4LF</u>
<u>20021221-00016T4LF</u>	<u>20021221-00020T4LF</u>	<u>20021221-00026T4LF</u>	<u>20021221-00030T4LF</u>	<u>20021221-00034T4LF</u>
<u>20021221-00040T4LF</u>	<u>20021221-00044T4LF</u>	<u>20021221-00050T4LF</u>	<u>20021221-00060T4LF</u>	<u>20021221-00064T4LF</u>
<u>20021221-00068T4LF</u>	<u>20021221-00080T4LF</u>	<u>20021221-000A0T4LF</u>	<u>20021221-00006D4LF</u>	<u>20021221-00008D4LF</u>
<u>20021221-00010D4LF</u>	<u>20021221-00012D4LF</u>	<u>20021221-00014D4LF</u>	<u>20021221-00016D4LF</u>	<u>20021221-00020D4LF</u>
<u>20021221-00026D4LF</u>	<u>20021221-00030D4LF</u>	<u>20021221-00034D4LF</u>	<u>20021221-00040D4LF</u>	<u>20021221-00044D4LF</u>
<u>20021221-00050D4LF</u>	<u>20021221-00060D4LF</u>	<u>20021221-00064D4LF</u>	<u>20021221-00068D4LF</u>	<u>20021221-00080D4LF</u>
<u>20021221-000A0D4LF</u>	<u>20021221-00006C4LF</u>	<u>20021221-00010C4LF</u>	<u>20021221-00012C4LF</u>	<u>20021221-00016C4LF</u>
<u>20021221-00020C4LF</u>	<u>20021221-00006D1LF</u>	<u>20021221-00006D8LF</u>	<u>20021221-00006T1LF</u>	<u>20021221-00006T8LF</u>
<u>20021221-00008D1LF</u>	<u>20021221-00008D8LF</u>	<u>20021221-00008T1LF</u>	<u>20021221-00008T8LF</u>	<u>20021221-00010D1LF</u>
<u>20021221-00010D8LF</u>	<u>20021221-00010T1LF</u>	<u>20021221-00010T8LF</u>	<u>20021221-00012D1LF</u>	<u>20021221-00012D8LF</u>
<u>20021221-00012T1LF</u>	<u>20021221-00012T8LF</u>	<u>20021221-00014D1LF</u>	<u>20021221-00014D8LF</u>	<u>20021221-00014T1LF</u>
<u>20021221-00014T8LF</u>	<u>20021221-00016D1LF</u>	<u>20021221-00016D8LF</u>	<u>20021221-00016T1LF</u>	<u>20021221-00016T8LF</u>
<u>20021221-00020D1LF</u>	<u>20021221-00020D8LF</u>	<u>20021221-00020T1LF</u>	<u>20021221-00020T8LF</u>	<u>20021221-00026D1LF</u>
<u>20021221-00026D8LF</u>	<u>20021221-00026T1LF</u>	<u>20021221-00026T8LF</u>	<u>20021221-00030D1LF</u>	<u>20021221-00030D8LF</u>
<u>20021221-00030T1LF</u>	<u>20021221-00030T8LF</u>	<u>20021221-00034D1LF</u>	<u>20021221-00034D8LF</u>	<u>20021221-00034T1LF</u>
<u>20021221-00034T8LF</u>	<u>20021221-00040D1LF</u>	<u>20021221-00040D8LF</u>	<u>20021221-00040T1LF</u>	<u>20021221-00040T8LF</u>
<u>20021221-00044D1LF</u>	<u>20021221-00044D8LF</u>	<u>20021221-00044T1LF</u>	<u>20021221-00044T8LF</u>	<u>20021221-00050D1LF</u>
<u>20021221-00050D8LF</u>	<u>20021221-00050T1LF</u>	<u>20021221-00050T8LF</u>	<u>20021221-00060D1LF</u>	<u>20021221-00060D8LF</u>
<u>20021221-00060T1LF</u>	<u>20021221-00060T8LF</u>	<u>20021221-00064D1LF</u>	<u>20021221-00064D8LF</u>	<u>20021221-00064T1LF</u>