

NUMBER C-316768

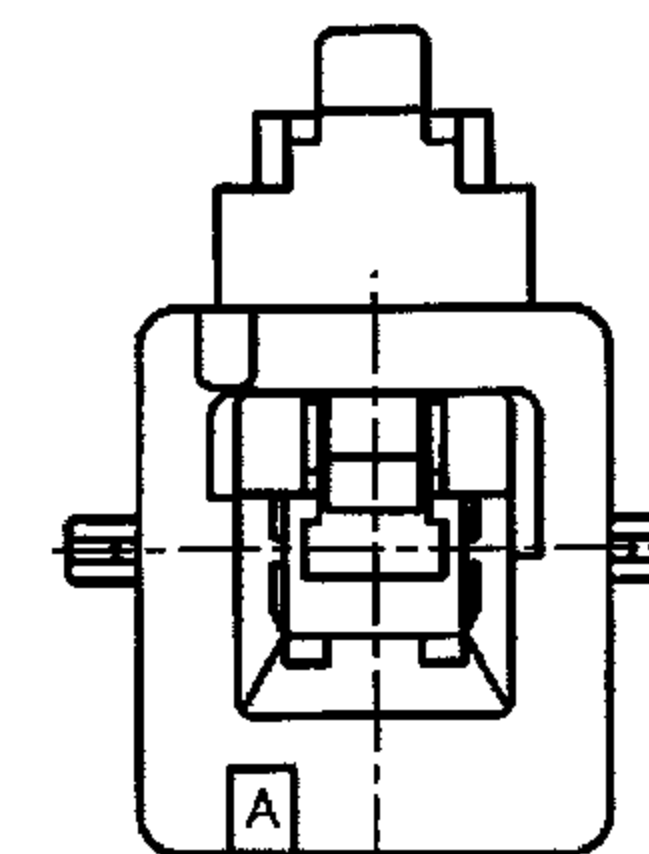
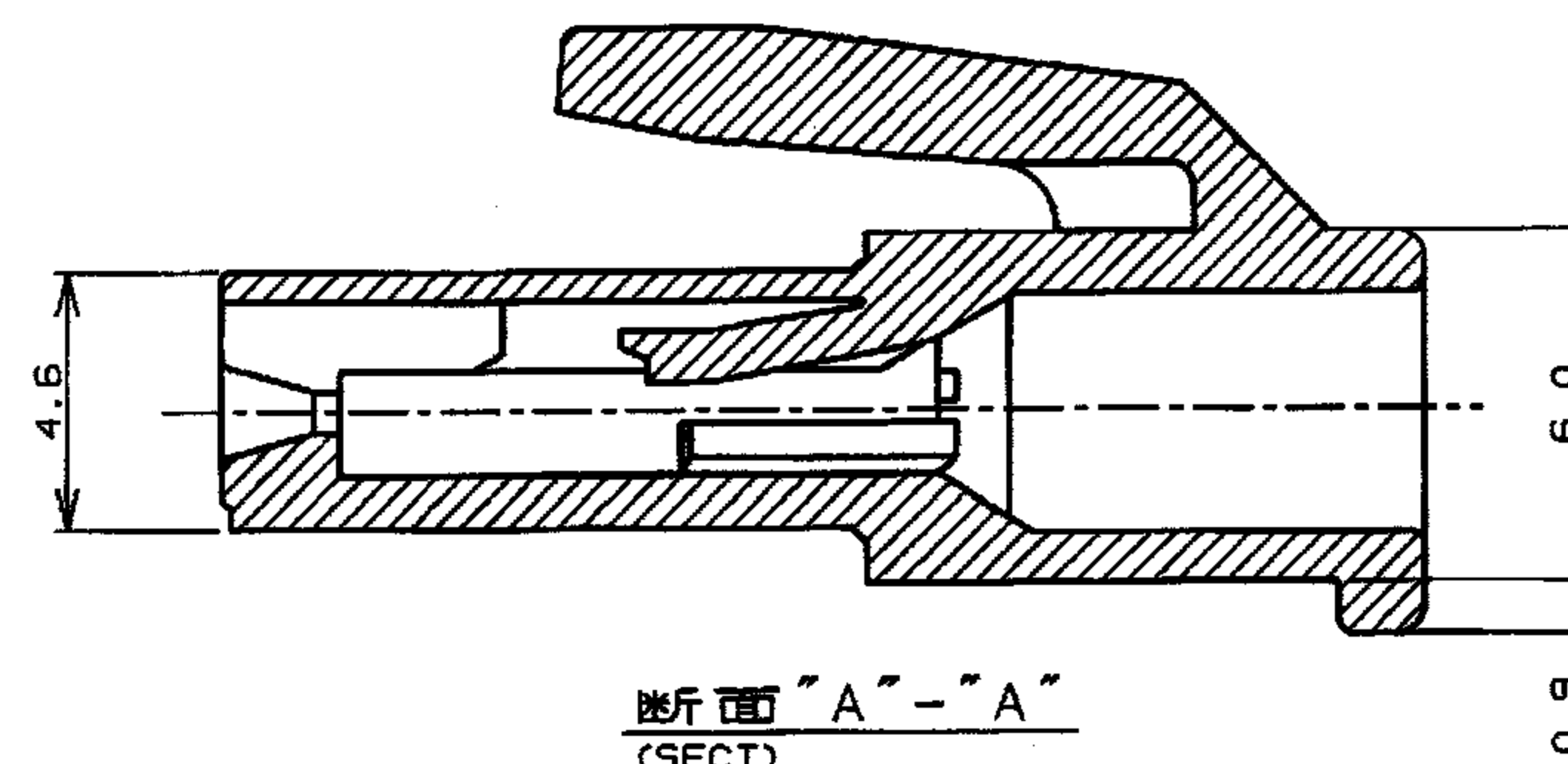
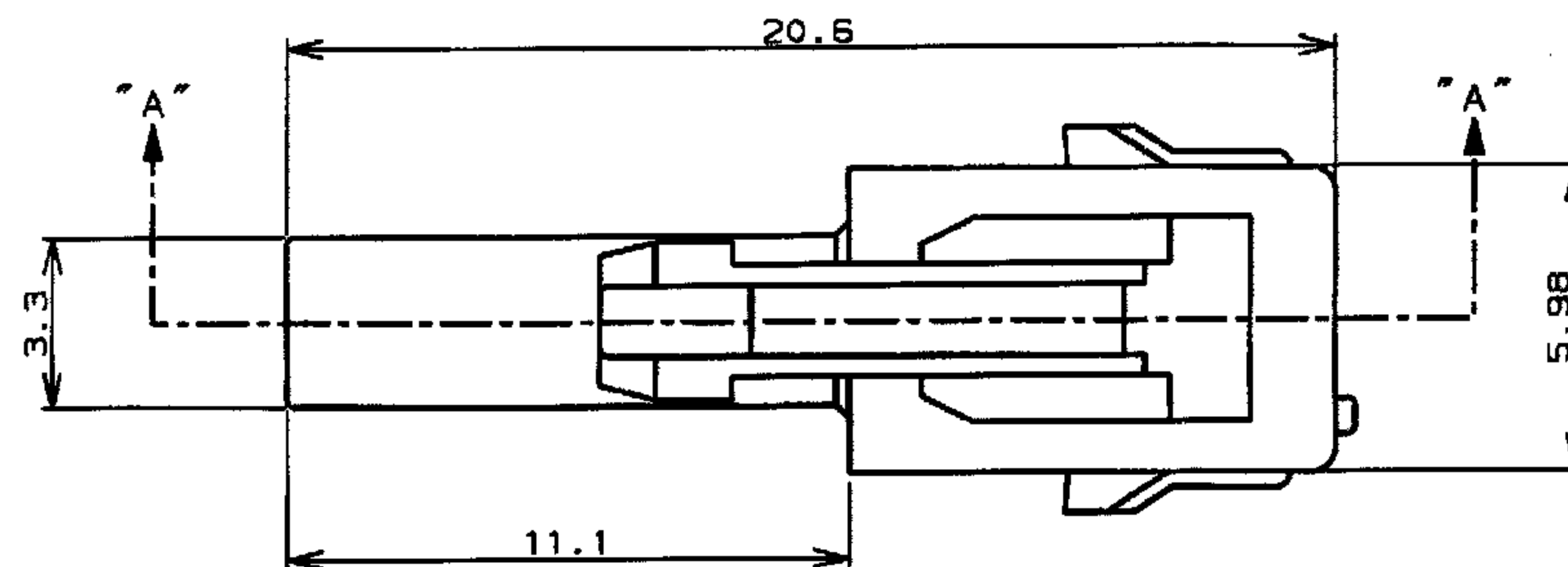
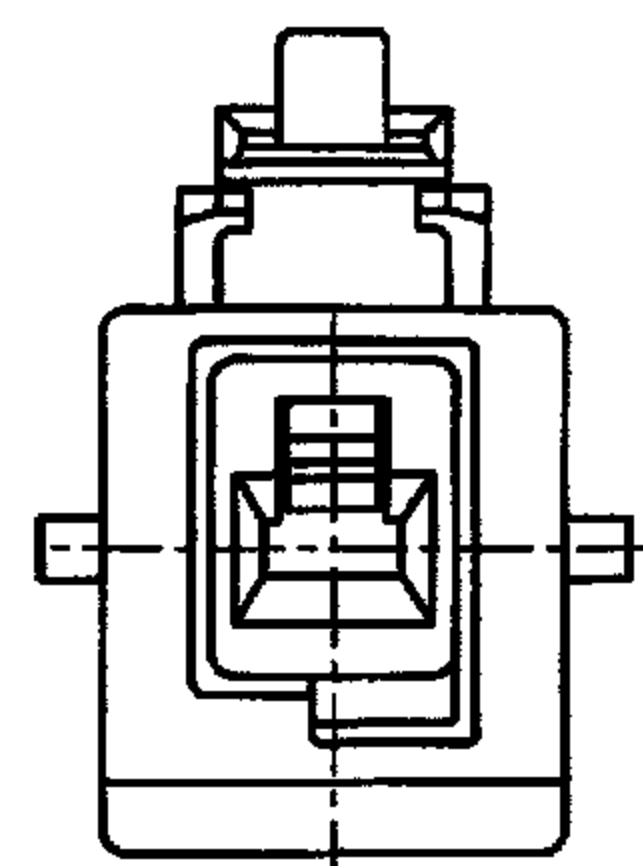
三 角 錐 3° 角 度 投 影 法  
METRIC

METRIC

PRINT DIST  
単位: mm DIMENSIONS IN MM. DO NOT SCALE PRINT

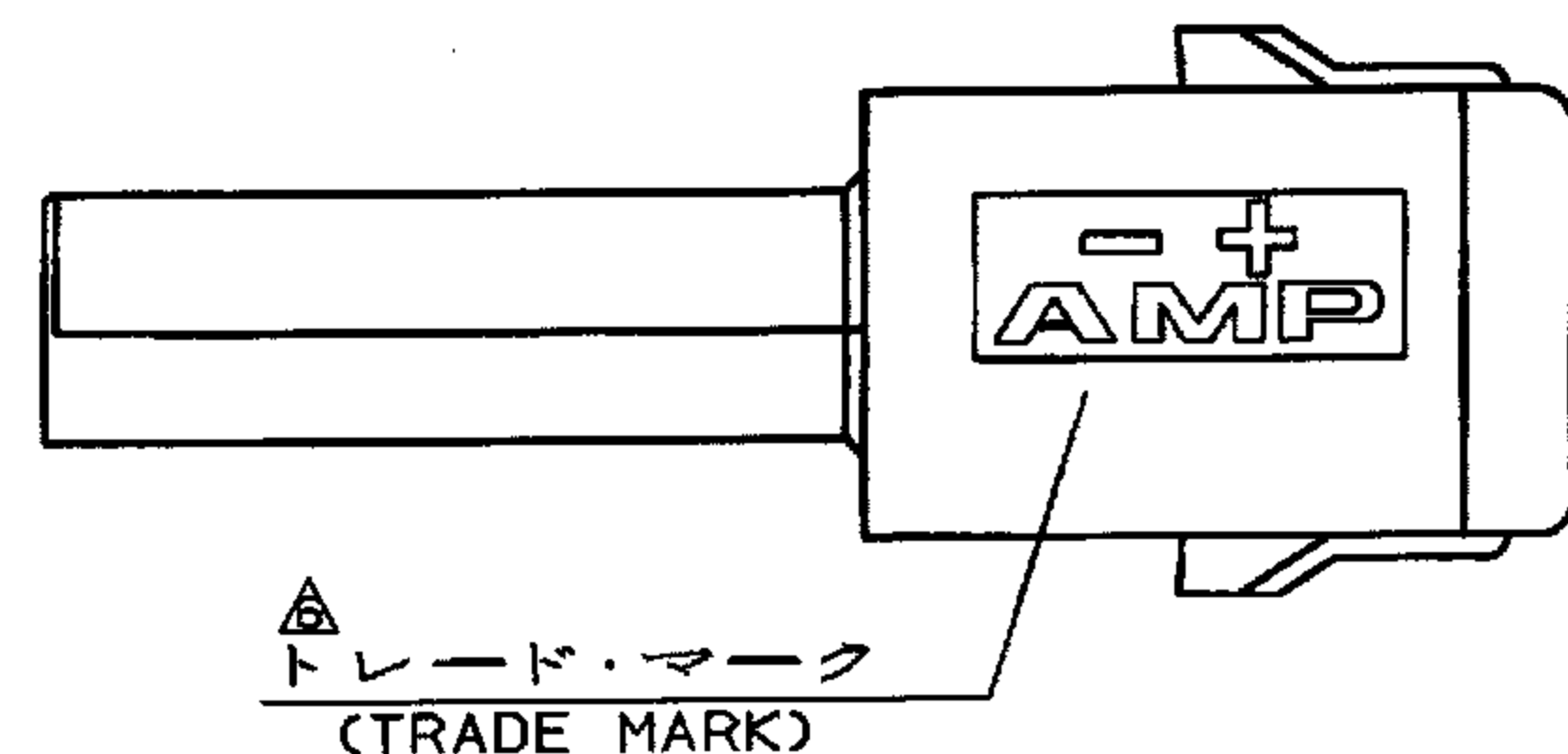
# NOTES,

1. PRODUCT SPEC., 108-5410
2. APPLICABLE CONTACT P/N  
REC CONTACT: 177915-□ (φ20-φ16AWG)  
177914-□ (φ26-φ22AWG)
3. MATING CONN. P/N  
CAP HSG: 316769-□  
TAB CONTACT: 177917-□ (φ20-φ16AWG)  
177916-□ (φ26-φ22AWG)
4. APPLICABLE PLATE P/N: 316770-1
5. INSTRUCTION SHEET : 411-5638
- △ SEE TABLE 1
7. PART 5-316768-1 COMPLY WITH GLOW WIRE REQUIREMENT FOR PARTS OF NON-METALLIC MATERIAL SUPPORTING A CURRENT CARRYING CONNECTION DETAILED IN IEC 60335-1, SECTION 30(GWT).



## 注:

1. 適用製品規格: 108-5410
2. 適用コンタクト型番  
リセ・コンタクト: 177915-□ (φ20-φ16AWG)  
177914-□ (φ26-φ22AWG)
3. 嵌合相手側製品型番  
キャップ・ハウジング: 316769-□  
タブ・コンタクト: 177917-□ (φ20-φ16AWG)  
177916-□ (φ26-φ22AWG)
4. 適用プレート型番: 316770-1
5. 取扱説明書: 411-5638
- △ 表1参照



|                         |           |            |
|-------------------------|-----------|------------|
| 自然色(NATURAL)            | 1         | 5-316768-1 |
| 黒 (BLACK)               | ↑         | ↑ -9       |
| 青 (BLUE)                | ↑         | ↑ -6       |
| 黄 (YELLOW)              | ↑         | ↑ -4       |
| 赤 (RED)                 | ↓         | ↓ -2       |
| 自然色(NATURAL)            | 1         | 316768-1   |
| ハウジング色調 (HOUSING COLOR) | 極数 (Pos.) | 型番 (P/N)   |



表1 (TABLE 1)

| トレードマーク (TRADE MARK) | 生産場所 (MANUFACTURING PLACE) |
|----------------------|----------------------------|
| —AMP OR AMP          | 日本 (JAPAN)                 |
| —+AMP OR AMP         | 中国 (CHINA(PRC))            |
| •AMP OR AMP          | 韓国 (KOREA)                 |

|  |  |  |  |  |  |  |  |  |  |  |  |
|--|--|--|--|--|--|--|--|--|--|--|--|
|  |  |  |  |  |  |  |  |  |  |  |  |
|  |  |  |  |  |  |  |  | <b>AMP</b>   |  |  |  |
|  |  |  |  |  |  |  |  | Tyco Electronics AMP K.K., Kawasaki, Japan                   |  |  |  |
|  |  |  |  |  |  |  |  | AMP POWER DOUBLE LOCK CONN. 3.96mmピッチ プラグハウジング 1極            |  |  |  |
|  |  |  |  |  |  |  |  | AMP POWER DOUBLE LOCK CONN. 3.96mm PITCH PLUG HOUSING 1 Pos  |  |  |  |
|  |  |  |  |  |  |  |  | 一般公差   |  |  |  |
|  |  |  |  |  |  |  |  | 10以下: ±0.2<br>10以上30以下: ±0.25<br>30以上100以下: ±0.3<br>角 度: ±3° |  |  |  |
|  |  |  |  |  |  |  |  | SIZE LOC 番号(No.)   |  |  |  |
|  |  |  |  |  |  |  |  | A3 J C-316768  |  |  |  |
|  |  |  |  |  |  |  |  | 尺度 (SCALE)   |  |  |  |
|  |  |  |  |  |  |  |  | REV. B1  |  |  |  |
|  |  |  |  |  |  |  |  | SHEET 1 OF 1   |  |  |  |

# Mouser Electronics

Authorized Distributor

Click to View Pricing, Inventory, Delivery & Lifecycle Information:

[TE Connectivity:](#)

[5-316768-1](#)