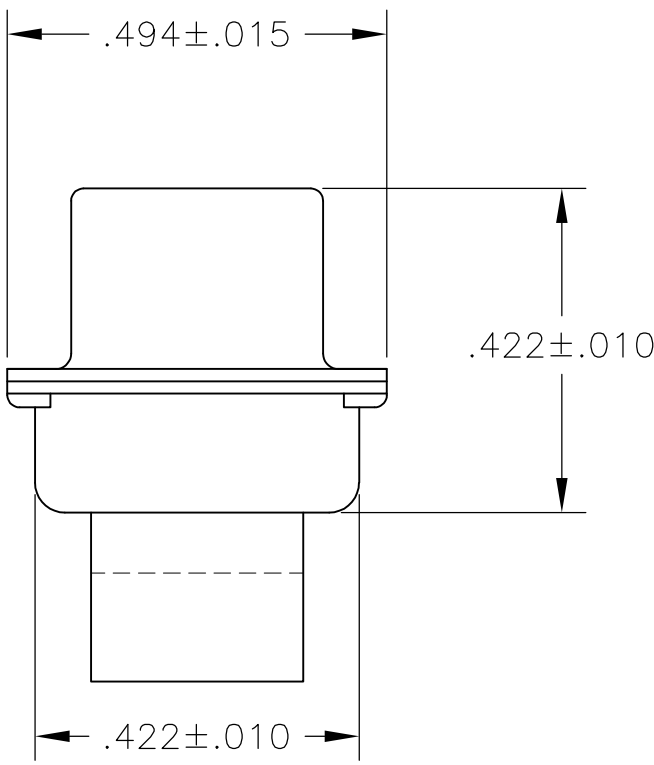
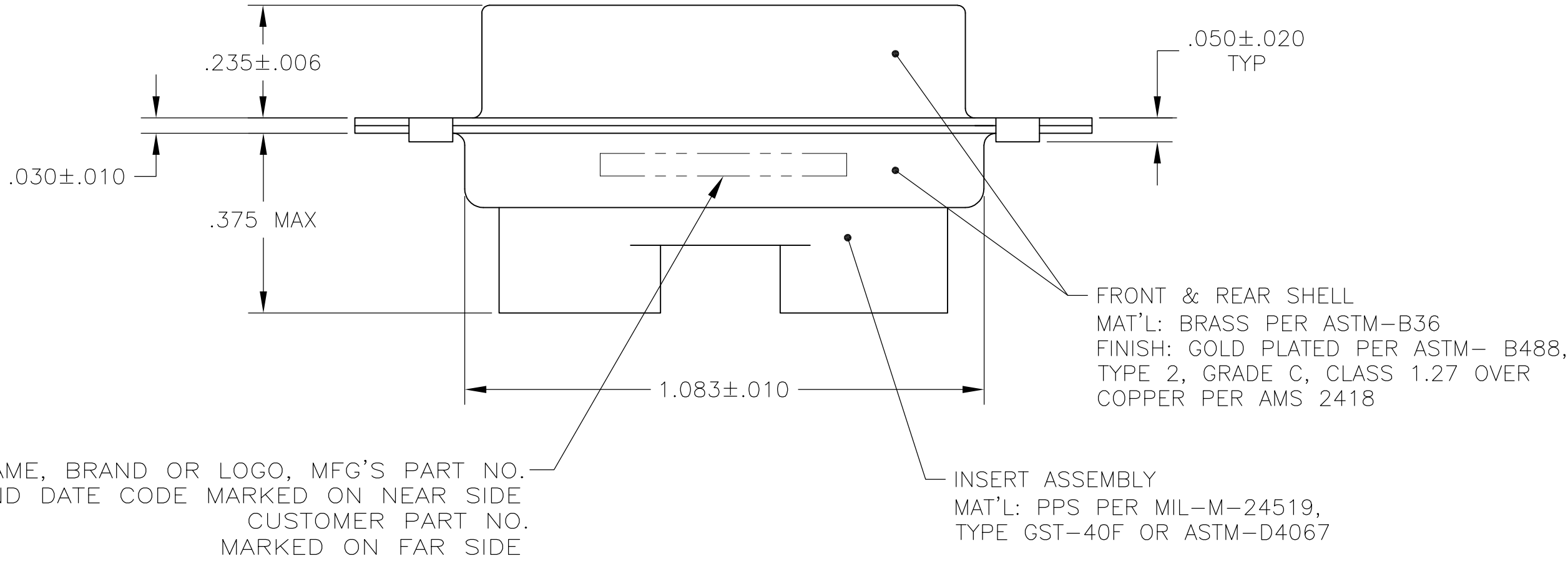
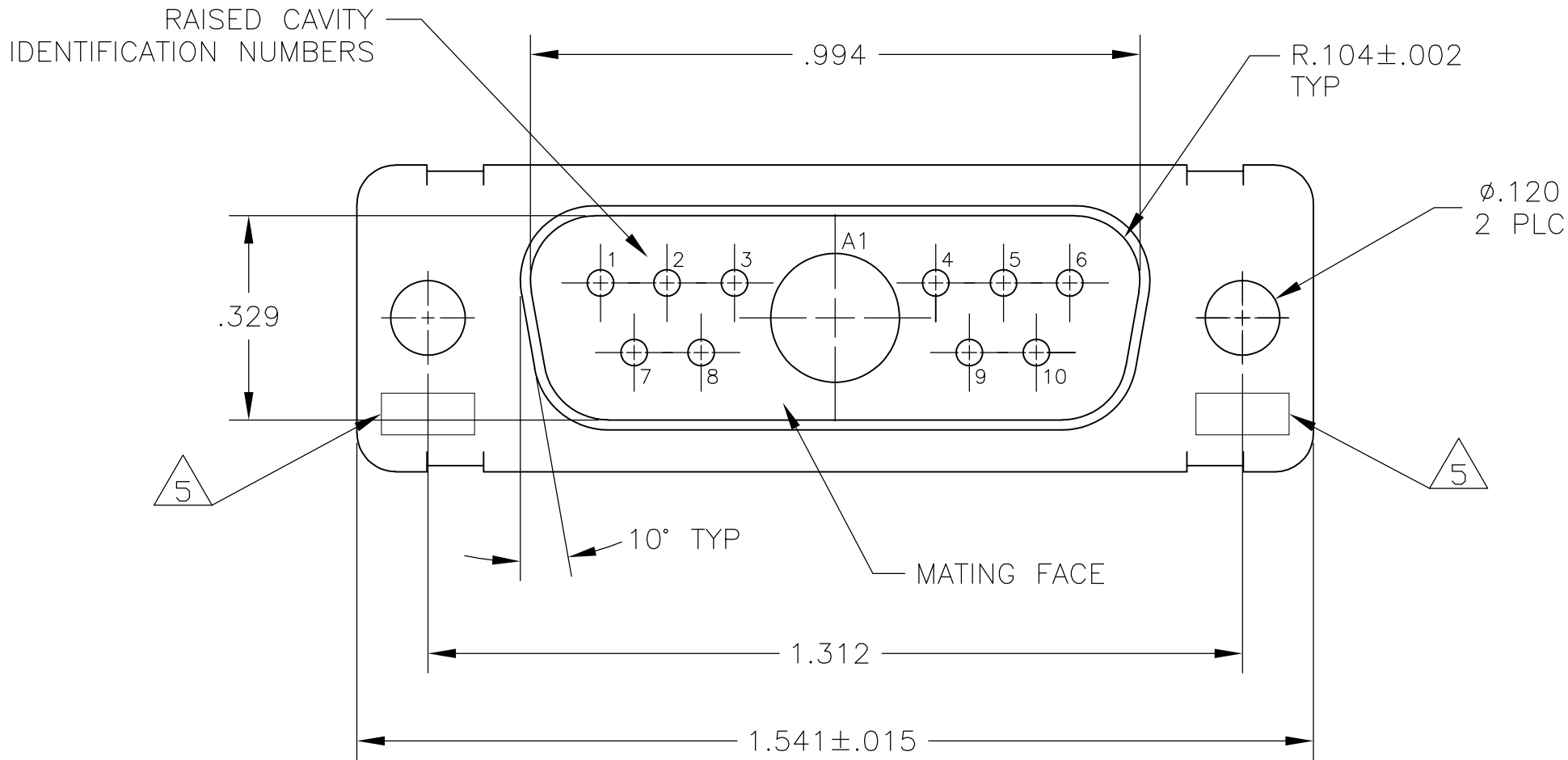


LOC	DIST	REVISIONS				
		P	LTR	DESCRIPTION	DATE	DWN APVD
DF	DO	C		REV PER ECO 08-030008	21JAN2009	PK RL

1. THIS PLUG WILL MATE WITH ANY 11C1, SIZE 2 RECEPTACLE IN AMPLIMITE SERIES.
2. MAXIMUM WIRE INSULATION TO BE USED WITH THIS PLUG IS ϕ .072.
3. THIS CONNECTOR ACCEPTS (1) POWER 8, OR COAX PIN CONTACT IN POSITIONS A1, PURCHASED SEPARATELY.
4. THIS CONNECTOR ACCEPTS SIZE 20 PIN CONTACTS IN POSITIONS 1 THRU 10. PURCHASED SEPARATELY.
- 5

UL/CSA DESIGNATION STAMPED IN THIS AREA, OPTIONAL.



MFG'S NAME, BRAND OR LOGO, MFG'S PART NO. AND DATE CODE MARKED ON NEAR SIDE CUSTOMER PART NO. MARKED ON FAR SIDE

INSERT ASSEMBLY
MAT'L: PPS PER MIL-M-24519,
TYPE GST-40F OR ASTM-D4067

B010950-0013	1883429-1
CUSTOMER PART NO.	PART NO.

THIS DRAWING IS A CONTROLLED DOCUMENT.		DWN C.C.THOMAS 10-4-06	Tyco Electronics Corporation Harrisburg, Pa 17105-3608	
DIMENSIONS: INCHES		CHK D.MILLER 10-4-06	NAME D.MILLER 10-4-06	
TOLERANCES UNLESS OTHERWISE SPECIFIED:		APVD D.MILLER 10-4-06	PRODUCT SPEC	
0 PLC ± .005		APPLICATION SPEC		RESTRICTED TO
1 PLC ± .005		WEIGHT		
2 PLC ± .005		CUSTOMER DRAWING		SCALE 4:1
3 PLC ± .005		SHEET 1 OF 1		
4 PLC ± .005		REV C		REV C
ANGLES ± .030°		CUSTOMER DRAWING		
FINISH SEE CALLOUTS		CUSTOMER DRAWING		REV C
MATERIAL SEE CALLOUTS		CUSTOMER DRAWING		

Mouser Electronics

Authorized Distributor

Click to View Pricing, Inventory, Delivery & Lifecycle Information:

[TE Connectivity:](#)

[1883429-1](#)