

THIS DRAWING IS UNPUBLISHED.

RELEASED FOR PUBLICATION

© COPYRIGHT - BY TYCO ELECTRONICS CORPORATION. ALL RIGHTS RESERVED.

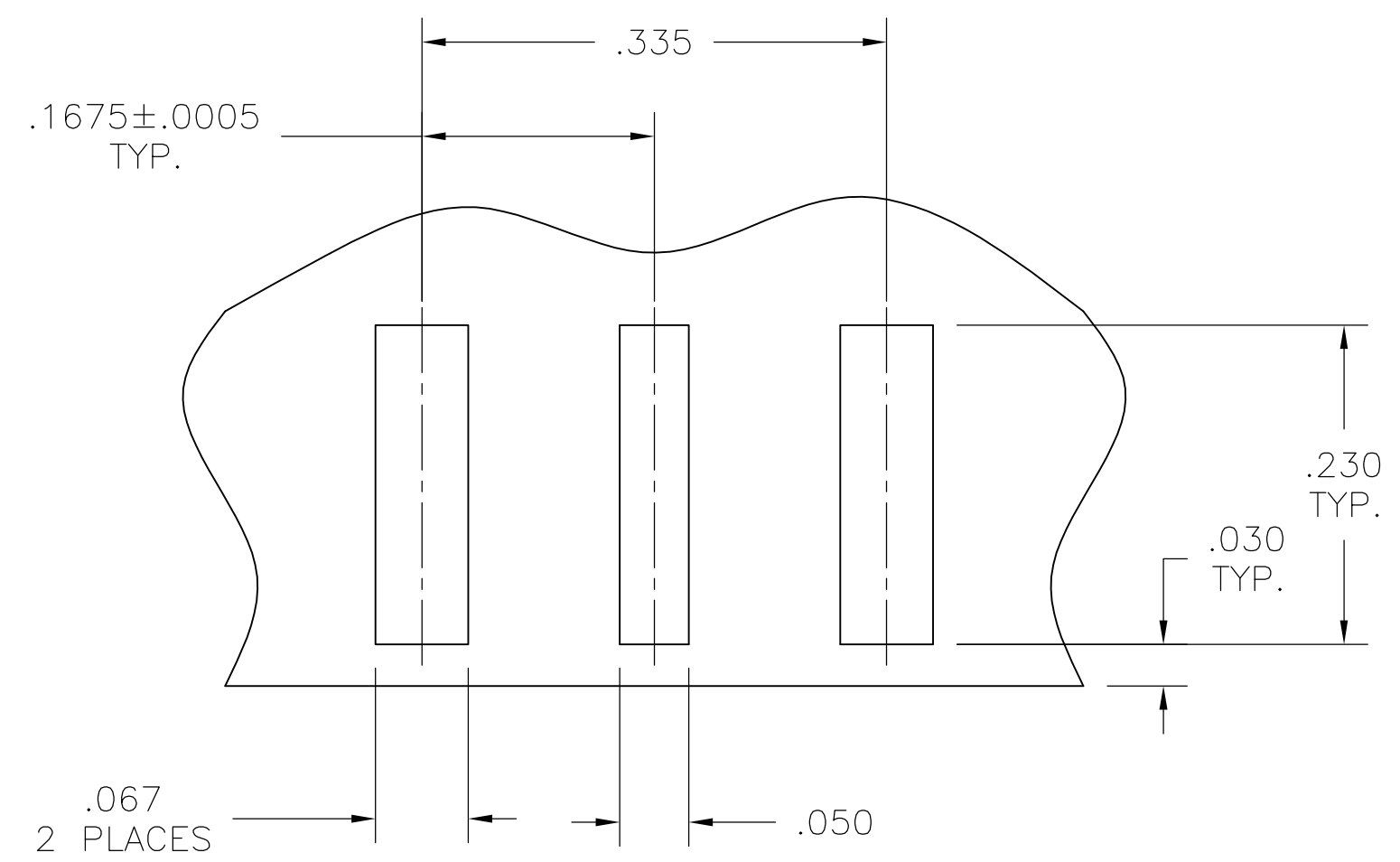
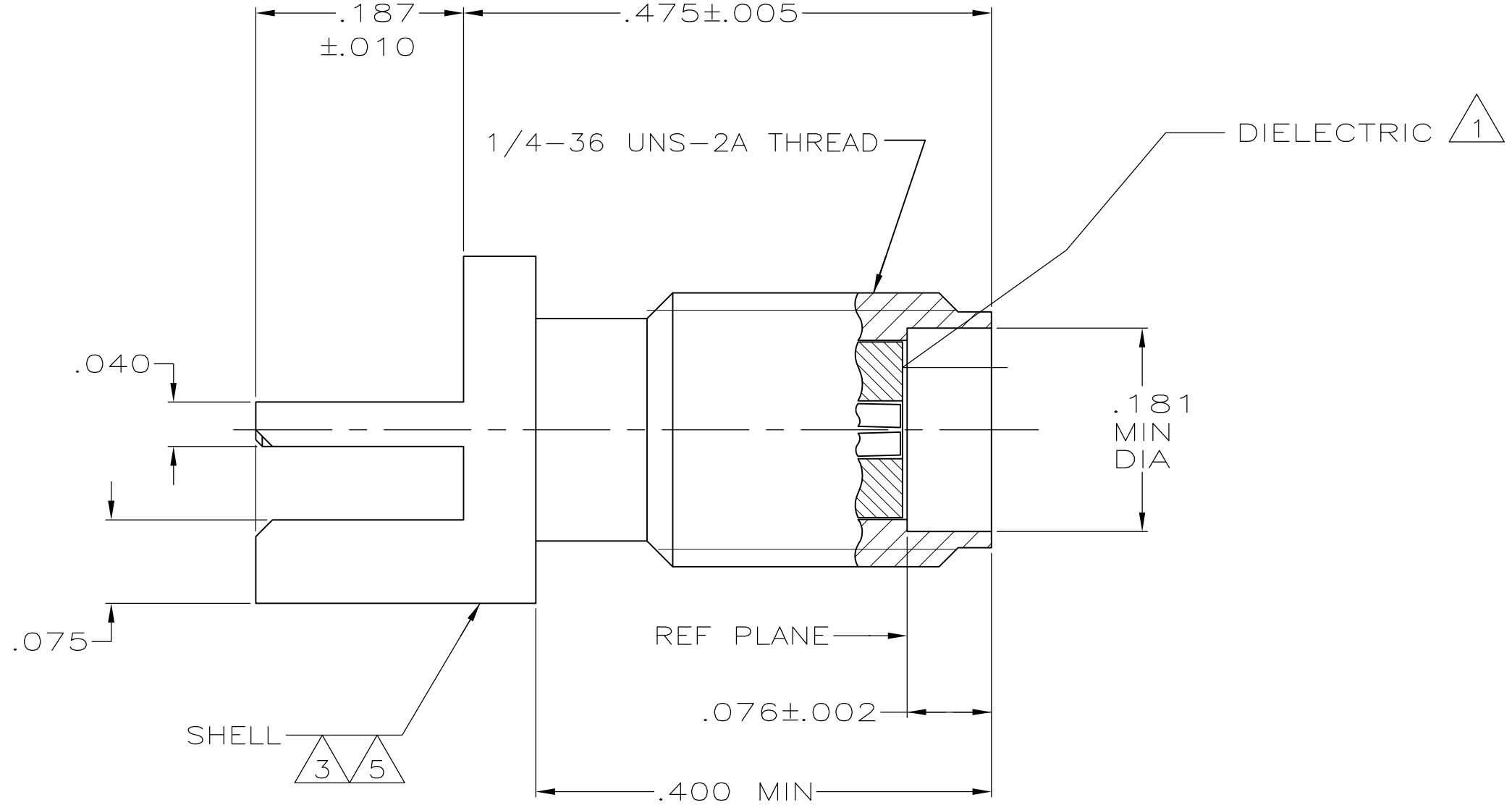
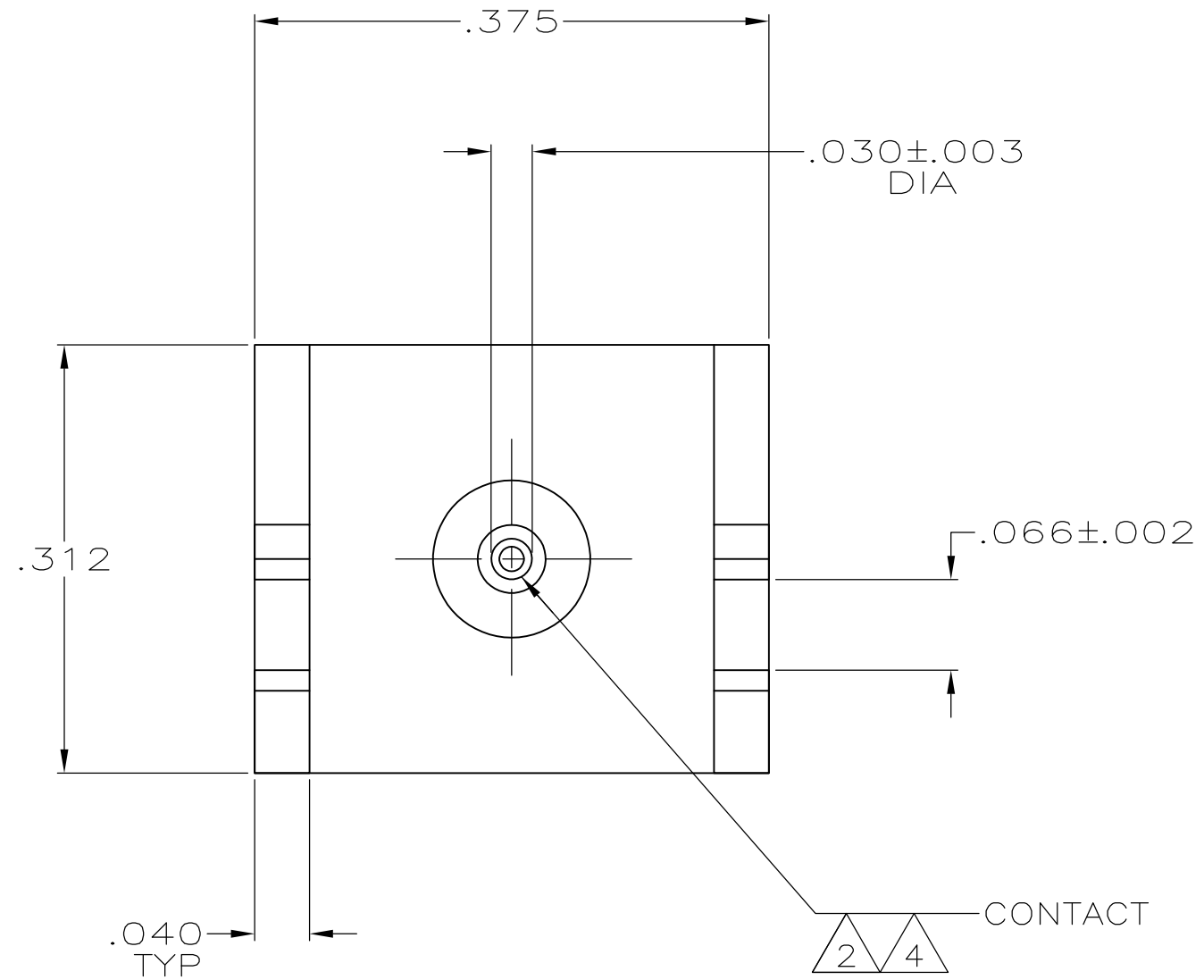
LOC		DIST		REVISIONS			
AJ		16		P	LTR	DESCRIPTION	DATE
					A	REV PER ECO 08-007085	25MAR2008
						DWN	APVD
						DW	BW

D

C

B

A


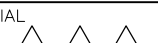



- 1 PTFE
- 2 BERYLLIUM COPPER
- 3 BRASS
- 4 GOLD PLATE
- 5 TIN PLATE

RECOMMENDED PCB LAYOUT FOR 62.5"(¹/₁₆") BOARD

5449692-1

PART NUMBER

THIS DRAWING IS A CONTROLLED DOCUMENT.			DWN J. VARELA — DOCKS		Tyco Electronics Corporation Harrisburg, PA 17105-3608						
DIMENSIONS: INCHES			CHK J. HAVENER		Tyco Electronics						
			APVD D. CAMELIO		NAME ASSEMBLY, JACK LAUNCHER, SMA —						
			01FEB2005								
			PRODUCT SPEC —								
			APPLICATION SPEC —								
MATERIAL			FINISH		SIZE	CAGE CODE	DRAWING NO		RESTRICTED TO		
					WEIGHT —	A2	00779	C=5449692	—		
CUSTOMER DRAWING						SCALE	8:1	SHEET	1 OF 1	REV	A

5449692

B

A

Mouser Electronics

Authorized Distributor

Click to View Pricing, Inventory, Delivery & Lifecycle Information:

[TE Connectivity:](#)

[5449692-1](#)