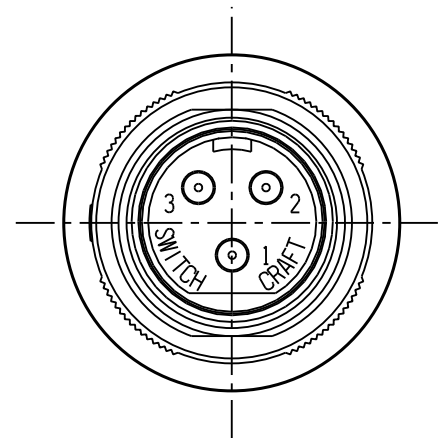
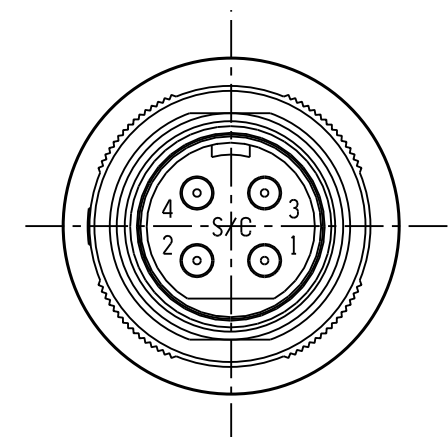


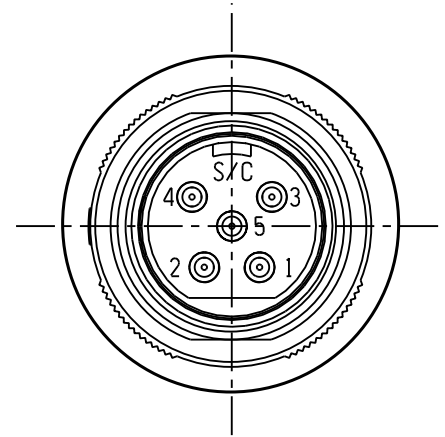
SL182MX



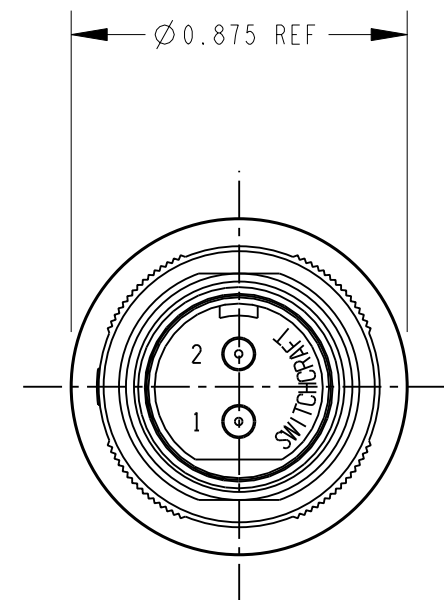
SL183MX



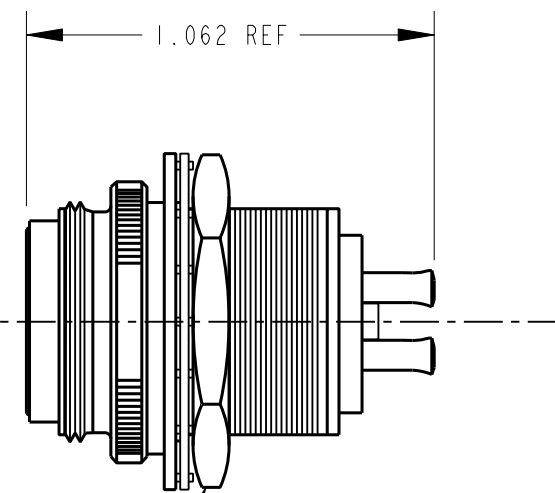
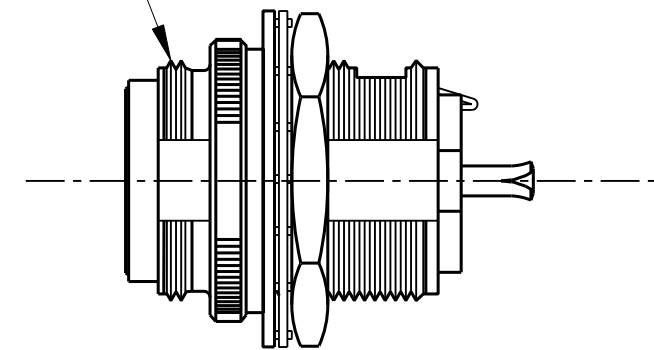
SL184MX



SL185MX



5/8-27 UNS-2A THREAD
BOTH ENDS REF



SEE NOTE 1

NOTES:

1. HOUSING AND PIN ASSEMBLY SHIPPED UNASSEMBLED.
2. HEX NUT AND WASHERS SHIPPED UNASSEMBLED.
3. THESE PRODUCTS ARE RoHS COMPLIANT.

CUSTOMER DRAWING

					<div>★ STAR SYMBOL DENOTES CRITICAL DIMENSION</div>	THIS DRAWING DESCRIBES A DESIGN CONSIDERED PROPRIETARY IN NATURE, DEVELOPED AND MANUFACTURED BY SWITCHCRAFT INC. AND IS RELEASED ON A CONFIDENTIAL BASIS FOR IDENTIFICATION PURPOSES ONLY.					
					UNLESS OTHERWISE SPECIFIED	SIZE	WIDTH	MULT	LBS/M	TEMPER	
					1. ALL DIMENSIONS IN INCHES -TWO PLACE DECIMALS ±0.01 -THREE PLACE DECIMALS ±0.005 -ANGLES ±1° -ALL DIA. CONCENTRIC WITHIN 0.005 T.I.R.	FINISH SPEC No.			MATERIAL SPEC No.		
					2. FEATURES ON THE SAME CENTERLINE MUST BE ALIGNED WITHIN ±0.002	FIRST USED ON		SCALE DRAWING SCALE		<div>Switchcraft®</div>	
					3. REMOVE ALL BURRS	DATE DRAWN	BY	CHKD	APVD		
A	26150	11-30-06	TJK	TJK		30-Nov-06	TJK	TJK 11-30-06	TJK 11-30-06	SHEET OF	
REV	ECO NUMBER	DATE	BY	APVD		NAME SLIM-LINE MALE FRONT PANEL MOUNT RECEPTACLE, RoHS				PART No. SL18_MX SERIES	REV A
REVISIONS					DO NOT SCALE DRAWING						

Mouser Electronics

Authorized Distributor

Click to View Pricing, Inventory, Delivery & Lifecycle Information:

Switchcraft:

[SL182MX](#) [SL183MX](#)