

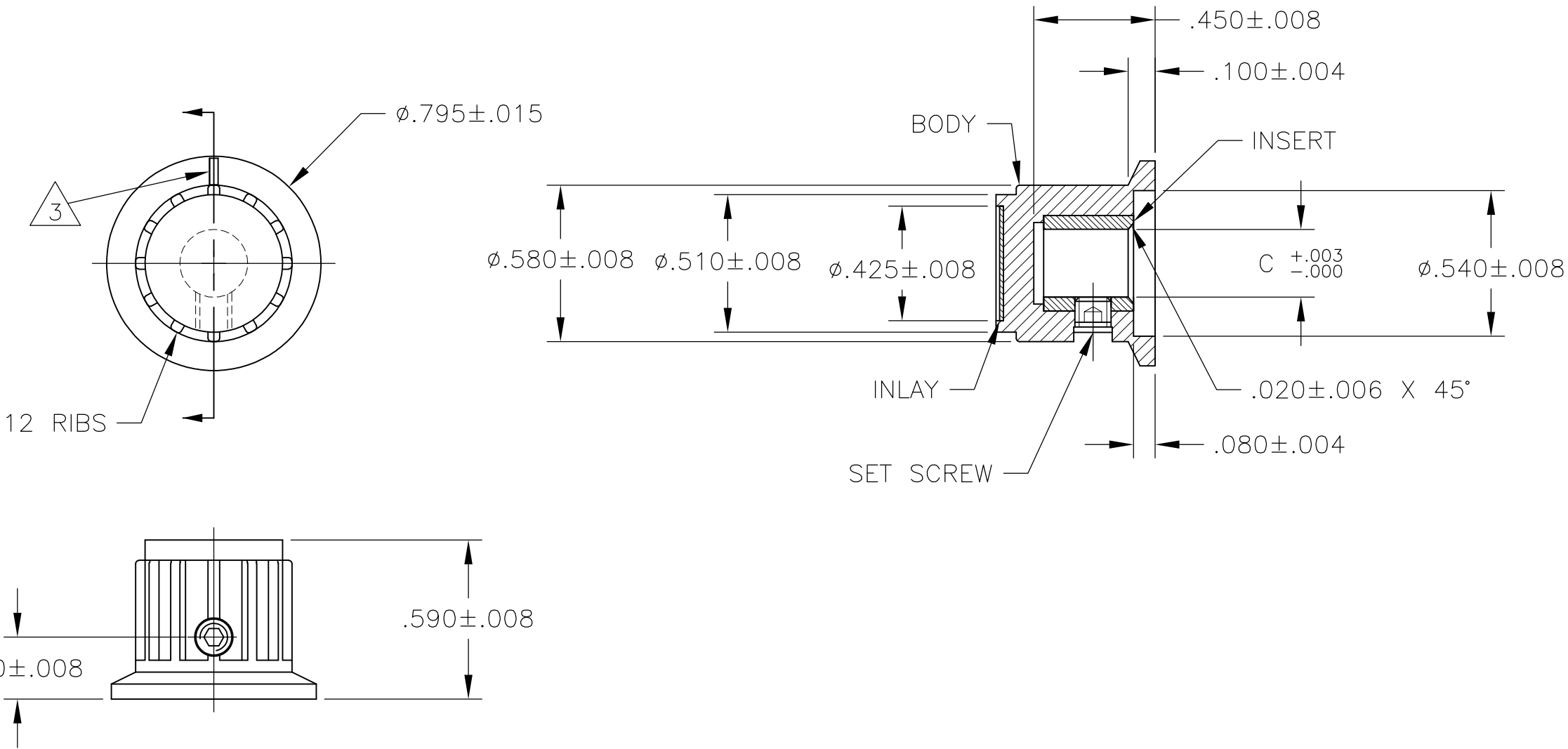
4

3

2

1


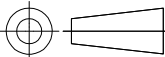
LOC	DIST	REVISIONS					
AD	0	P	LTR	DESCRIPTION	DATE	DWN	APVD
			D1	REVISED PER ECO-11-004917	11MAR11	RK	HMR

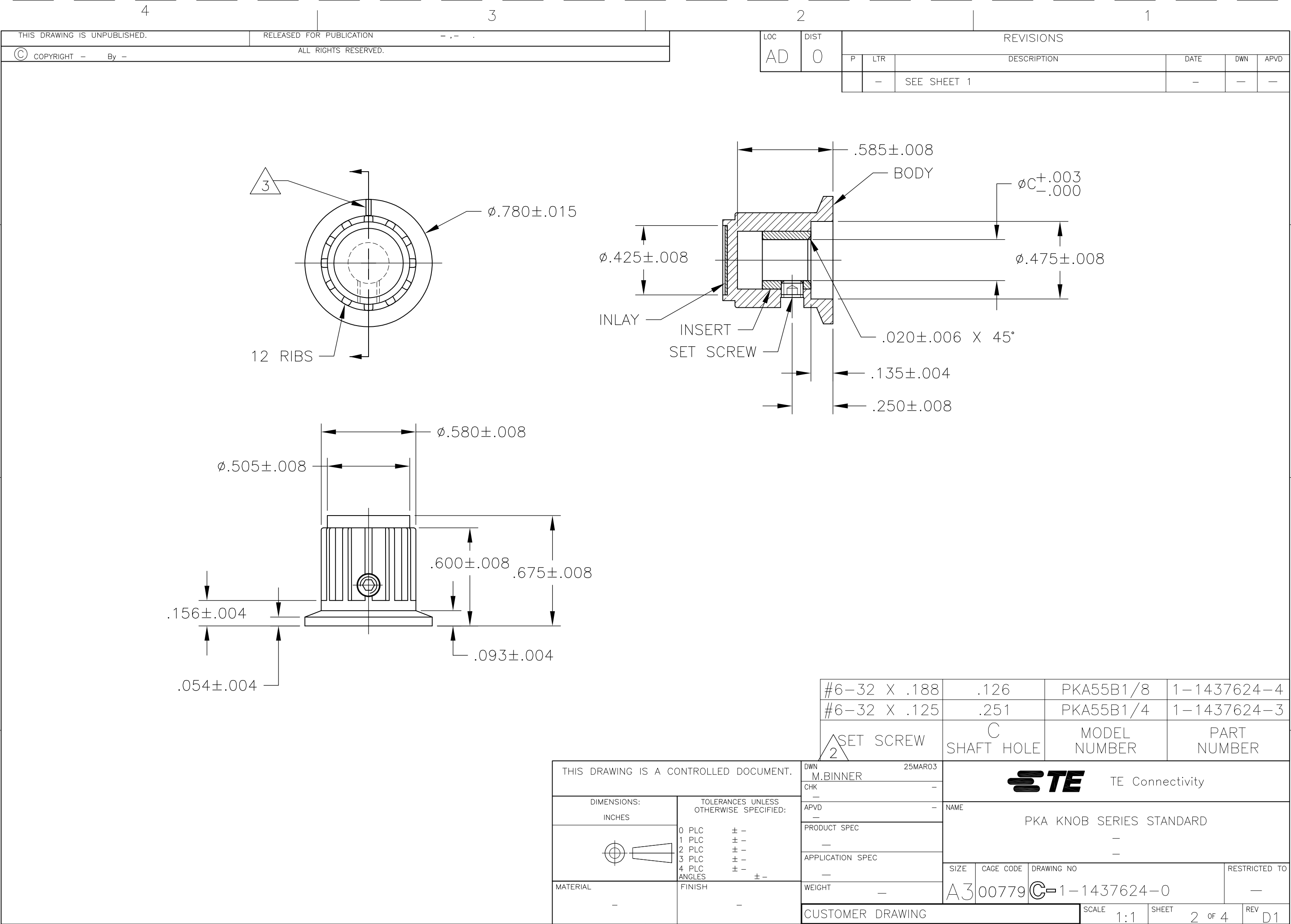


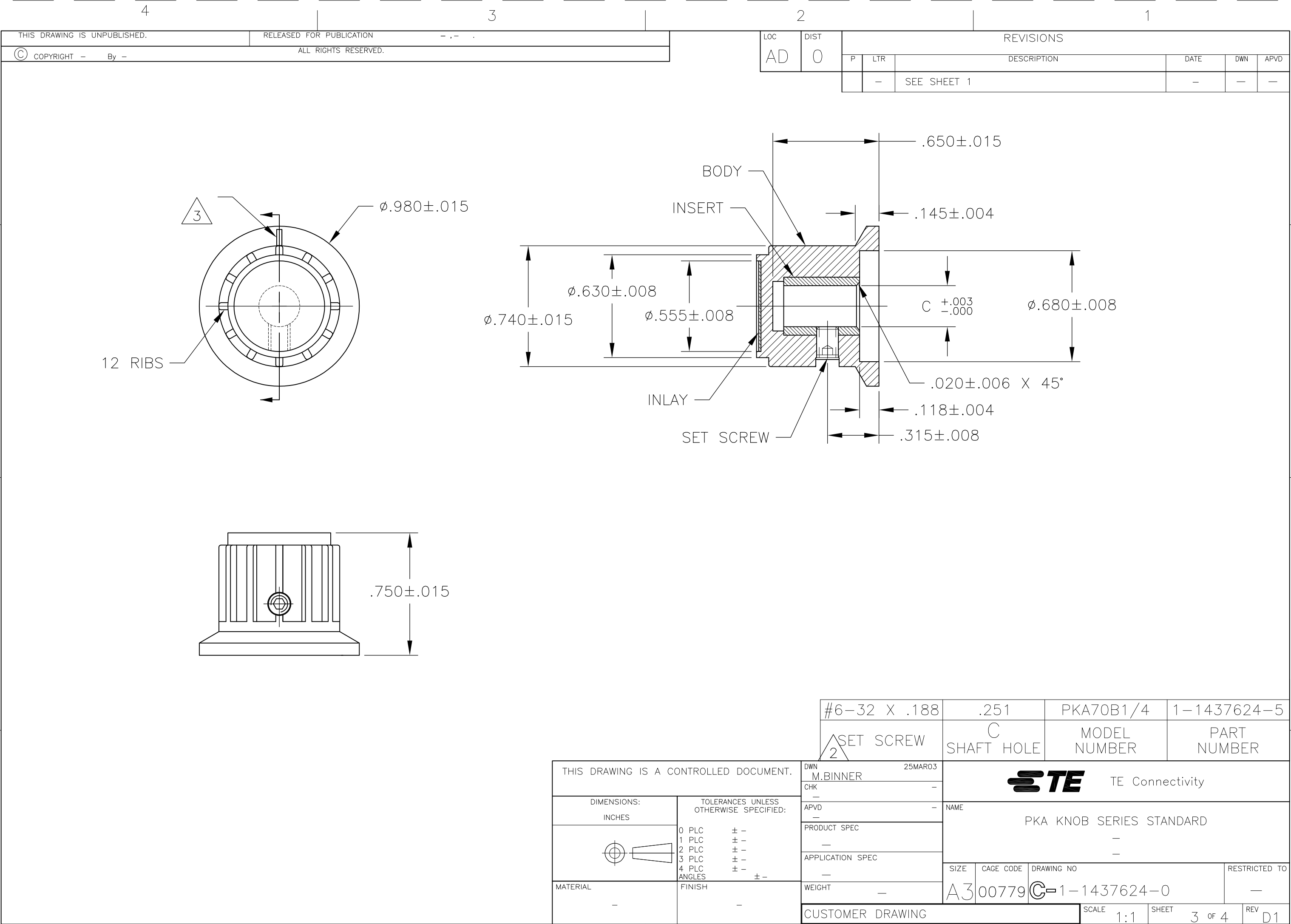
1. MATERIAL AND FINISH:
SKIRT AND INLAY: ALUMINUM .016 THK., CLEAR ACRYLIC COATED
BODY: PHENOLIC, BLACK, HIGH GLOSS FINISH (SPE/SP1#A2)
SET SCREW: 303 STAINLESS STEEL, BLACK ANODIZED
INSERT: BRASS

2. SET SCREW ARE UNC-2A, CUP POINT, HEX SOCKET TYPE.
3. INDICATOR, PAINTED FULL, COLOR: WHITE; $.02 \pm .01$ DEEP
4. RETENTION FORCE OF INSERT IN KNOB BODY: 2 LBS MIN.

#6-32 X .188	.126	PKA50B1/8	1-1437624-1
#6-32 X .125	.251	PKA50B1/4	1-1437624-0
2 SET SCREW	C SHAFT HOLE	MODEL NUMBER	PART NUMBER

THIS DRAWING IS A CONTROLLED DOCUMENT.		DWN M.BINNER	25MAR03	 TE Connectivity	
DIMENSIONS: INCHES		CHK	-		
	0 PLC	± -		PKA KNOB SERIES STANDARD	
	1 PLC	± -			
	2 PLC	± -			
	3 PLC	± -			
MATERIAL	4 PLC	± -		SIZE A3	
	ANGLES	± -			
FINISH				CAGE CODE	DRAWING NO
				00779	C-1-1437624-0
				RESTRICTED TO	
				SCALE	2:1
				SHEET	1 OF 4
				REV	D1





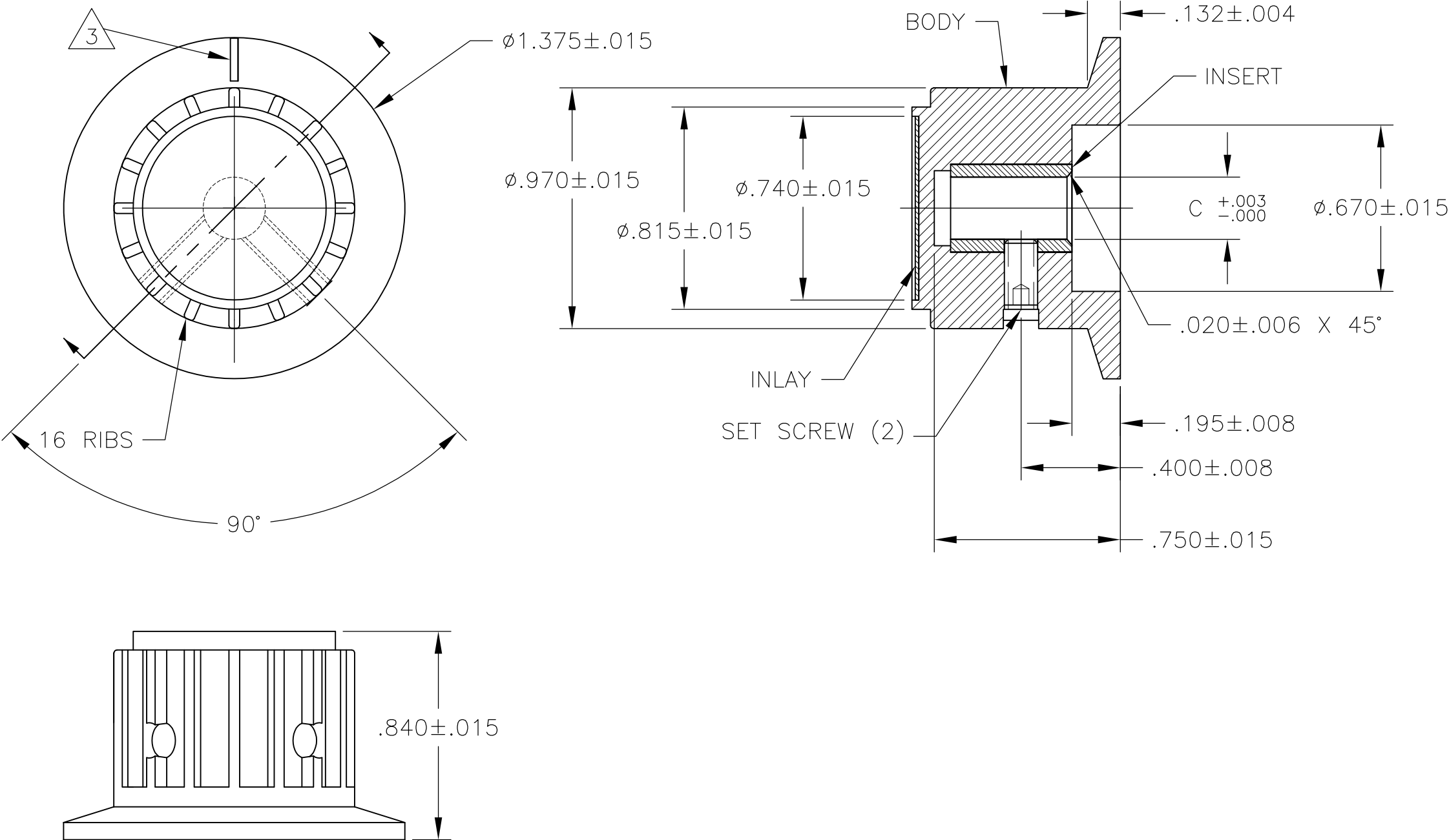
4

3

2

1

LOC	DIST	REVISIONS					
AD	0	P	LTR	DESCRIPTION	DATE	DWN	APVD
			—	SEE SHEET 1	—	—	—



#6-32 X .188	.251	PKA90B1/4	1-1437624-7
SET SCREW	SHAFT HOLE	MODEL NUMBER	PART NUMBER

THIS DRAWING IS A CONTROLLED DOCUMENT.		DWN M.BINNER	25MAR03	STE TE Connectivity			
DIMENSIONS: INCHES		CHK —	—	NAME PKA KNOB SERIES STANDARD			
		APVD —	—	—			
		PRODUCT SPEC —	—	—			
		APPLICATION SPEC —	—	SIZE A3	CAGE CODE 00779	DRAWING NO C-1-1437624-0	RESTRICTED TO —
MATERIAL —		FINISH —	—	—			
		WEIGHT —	—	—			
		CUSTOMER DRAWING		SCALE 1:1	SHEET 4 OF 4	REV D1	—

Mouser Electronics

Authorized Distributor

Click to View Pricing, Inventory, Delivery & Lifecycle Information:

[TE Connectivity:](#)

[PKA55B1/4](#)