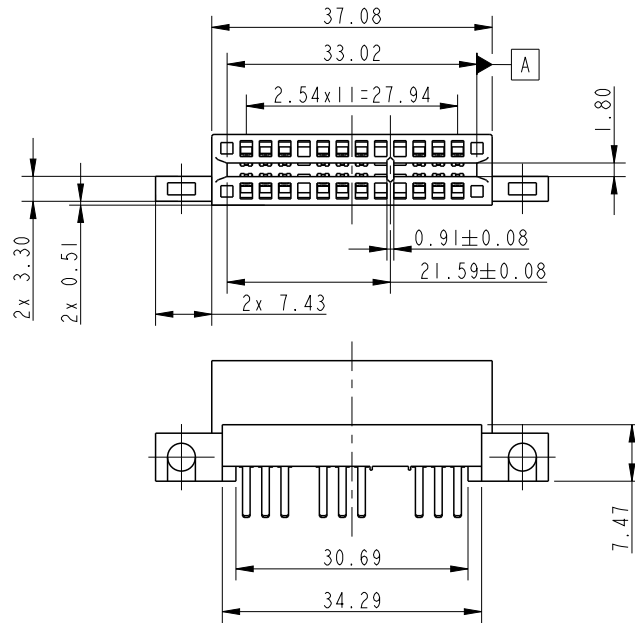
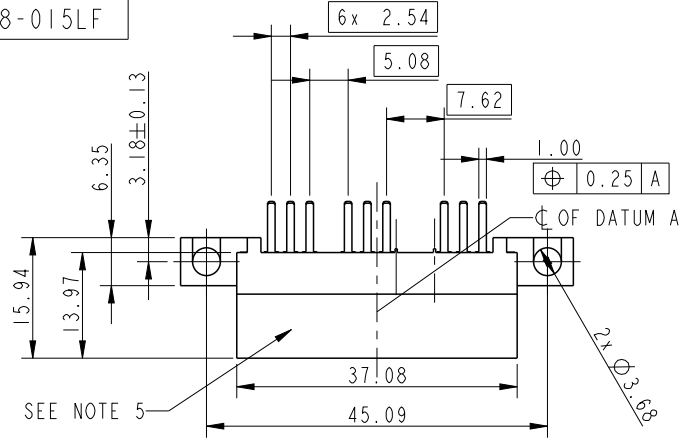
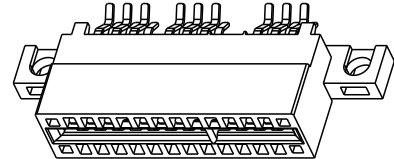
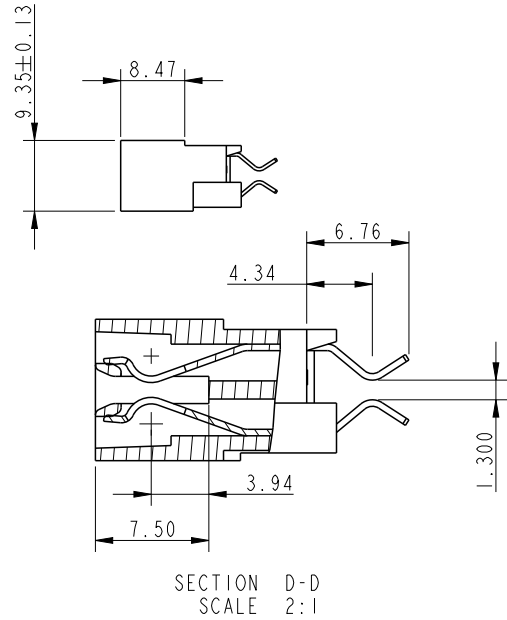


PRODUCT NUMBER
10034908-015LF



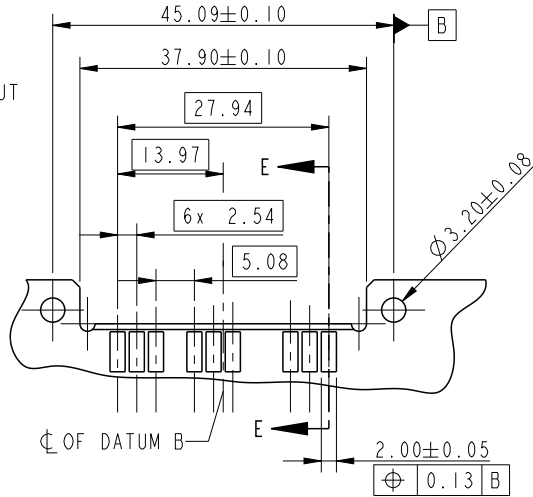
NOTE:
 1. MATERIAL
 HOUSING: HIGH TEMPERATURE THERMOPLASTIC
 UL 94 V-0 FLAME RETARDANT, BLACK.
 TERMINAL: HIGH CONDUCTIVITY COPPER ALLOY.
 PLATING: CONTACT AREA: 30µ" Au OVER 50µ" Ni UNDER ALL
 SOLDER TAIL: 100µ" MATTE PURE TIN OVER 50µ" Ni UNDER.
 2. PRODUCT SPECIFICATION: GS-12-279.
 3. PRODUCT PACKAGING SPEC: GS-14-937.
 4. PART NUMBER 10034908-015LF MEETS EUROPEAN UNION
 DIRECTIVE AND OTHER COUNTRY REGULATIONS AS DESCRIBED
 IN GS-22-008.
 THE HOUSING WILL WITHSTAND EXPOSURE TO 260°C PEAK
 TEMPERATURE FOR 10 SECONDS IN A REFLOW SOLDER APPLICATION
 WITH A CIRCUIT BOARD.
 5. PRODUCT MARKING ON HOUSING IN AREA SHOWN MEETS AFCE SPECIFICATION: GS-24-007.
 6. A SYMBOL WILL BE NEXT TO ANY DIMENSION, VIEW, OR NOTE WHICH HAS BEEN
 MODIFIED WITH THE CURRENT DRAWING REVISION.



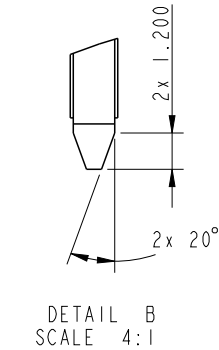
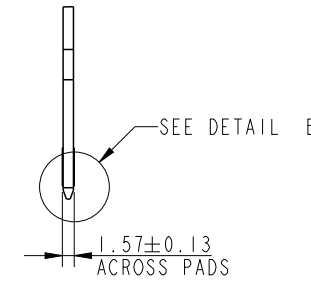
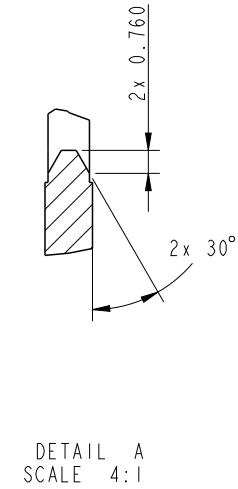
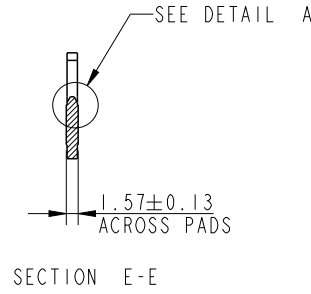
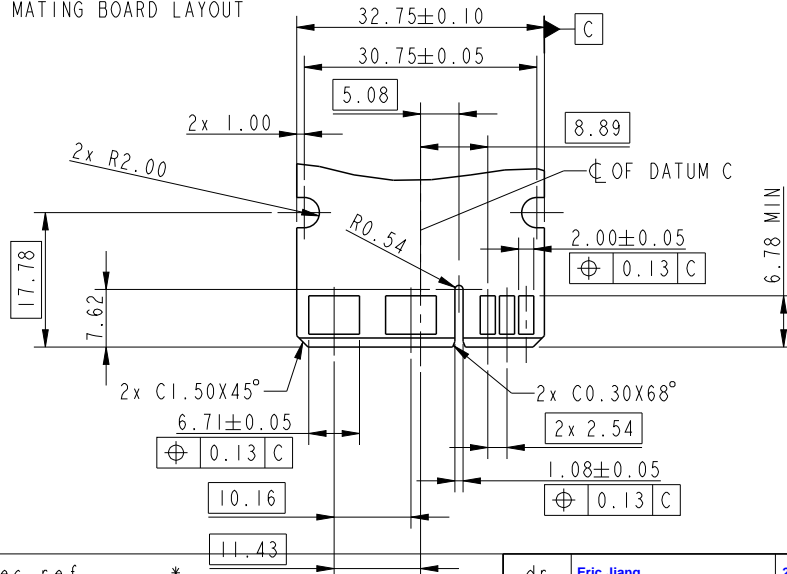
spec ref	*	dr	Eric Jiang	2013/03/18	projection	mm	size	A4	scale	1:1			
tolerance std	TOLERANCES UNLESS OTHERWISE SPECIFIED	eng	Sunny2 Liu	2016/04/12		mm	ecn no ELX-DG-22934-1						
		chr	Terris Liu	2016/05/20			rel level Released						
		appr	Pei-Ming Zheng	2016/05/24	product family		-						
surface	linear	Amphenol FCI	title STRADDLE MOUNT TYPE POWER EDGE CARD			dwg no	10034908-015			rev	B		
												0.X	±0.50
												0.XX	±0.25
		0.XXX	±0.13										
	angular	0°	±2°										
		cat. no.	Product - Customer Drw				sheet 1 of 2						

PRODUCT NUMBER
10034908-015LF

RECOMMENDED PC BOARD LAYOUT



RECOMMENDED MATING BOARD LAYOUT



spec ref	*	dr	Eric Jiang	2013/03/18		mm	size	A4	scale	17:16								
tolerance std	TOLERANCES UNLESS OTHERWISE SPECIFIED	eng	Sunny2 Liu	2016/04/12			ecn no	ELX-DG-22934-1										
surface	<table border="1"> <tr> <td>linear</td> <td>0.X</td> <td>±0.50</td> </tr> <tr> <td></td> <td>0.XX</td> <td>±0.25</td> </tr> <tr> <td></td> <td>0.XXX</td> <td>±0.13</td> </tr> <tr> <td>angular</td> <td>0°</td> <td>±2°</td> </tr> </table>	linear	0.X	±0.50				0.XX	±0.25		0.XXX	±0.13	angular	0°	±2°	chr	Terris Liu	2016/05/20
linear	0.X	±0.50																
	0.XX	±0.25																
	0.XXX	±0.13																
angular	0°	±2°																
		appr	Pei-Ming Zheng	2016/05/24	product family		rev		B									
		<p>Amphenol FCI</p>			<p>STRADDLE MOUNT TYPE POWER EDGE CARD</p>		<p>dwg no</p> <p>10034908-015</p>		<p>cat. no.</p> <p>* Product - Customer Drw</p>	<p>sheet 2 of 2</p>								

Mouser Electronics

Authorized Distributor

Click to View Pricing, Inventory, Delivery & Lifecycle Information:

[FCI / Amphenol:](#)

[10034908-003LF](#) [10034908-001LF](#) [10034908-001](#) [10034908-007LF](#) [10034908-015LF](#) [10034908-014LF](#) [10034908-009LF](#)