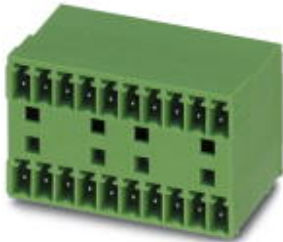


Base strip - MCD 1,5/10-G1-3,81 - 1843156

Please be informed that the data shown in this PDF Document is generated from our Online Catalog. Please find the complete data in the user's documentation. Our General Terms of Use for Downloads are valid (<http://phoenixcontact.com/download>)



Header, Nominal current: 8 A, Rated voltage (III/2): 160 V, Number of positions: 10, Pitch: 3.81 mm, Color: green, Contact surface: Tin, Mounting: Wave soldering, In combination with MCV plug components, both an MCVW and an MCVR plug must be used.

The figure shows a 10-pos. version with 20 contacts

Product Features

- Without offset levels, for flush installation on the front of devices
- Low-profile double-level pin strips with high contact density
- Plug-in direction parallel to the PCB



Key Commercial Data

| | |
|--------------------------------------|----------|
| Packing unit | 1 pc |
| GTIN | |
| Weight per Piece (excluding packing) | 12.09 g |
| Custom tariff number | 85366990 |
| Country of origin | Germany |

Technical data

Dimensions

| | |
|-----------------------|----------|
| Length | 21.9 mm |
| Pitch | 3.81 mm |
| Dimension a | 34.29 mm |
| Width | 39.49 mm |
| Constructional height | 22.7 mm |
| Height | 26.2 mm |

Base strip - MCD 1,5/10-G1-3,81 - 1843156

Technical data

Dimensions

| | |
|--------------------------|--------------|
| Length of the solder pin | 3.5 mm |
| Pin dimensions | 0,8 x 0,8 mm |
| Hole diameter | 1.2 mm |

General

| | |
|--|----------------|
| Range of articles | MCD 1,5/...-G1 |
| Insulating material group | I |
| Rated surge voltage (III/3) | 2.5 kV |
| Rated surge voltage (III/2) | 2.5 kV |
| Rated surge voltage (II/2) | 2.5 kV |
| Rated voltage (III/3) | 160 V |
| Rated voltage (III/2) | 160 V |
| Rated voltage (II/2) | 320 V |
| Connection in acc. with standard | EN-VDE |
| Nominal current I_N | 8 A |
| Maximum load current | 8 A |
| Insulating material | PA |
| Flammability rating according to UL 94 | V0 |
| Color | green |
| Number of positions | 10 |

Standards and Regulations

| | |
|--|--------|
| Connection in acc. with standard | EN-VDE |
| | CSA |
| Flammability rating according to UL 94 | V0 |

Classifications

eCl@ss

| | |
|------------|----------|
| eCl@ss 4.0 | 272607xx |
| eCl@ss 4.1 | 27260701 |
| eCl@ss 5.0 | 27260701 |
| eCl@ss 5.1 | 27260701 |
| eCl@ss 6.0 | 27260704 |
| eCl@ss 7.0 | 27440402 |
| eCl@ss 8.0 | 27440402 |
| eCl@ss 9.0 | 27440402 |

Base strip - MCD 1,5/10-G1-3,81 - 1843156

Classifications

ETIM

| | |
|----------|----------|
| ETIM 3.0 | EC001121 |
| ETIM 4.0 | EC002637 |
| ETIM 5.0 | EC002637 |

UNSPSC

| | |
|---------------|----------|
| UNSPSC 6.01 | 30211810 |
| UNSPSC 7.0901 | 39121409 |
| UNSPSC 11 | 39121409 |
| UNSPSC 12.01 | 39121409 |
| UNSPSC 13.2 | 39121409 |

Approvals

Approvals

Approvals


CSA / VDE Gutachten mit Fertigungsüberwachung / IECEx CB Scheme / cUL Recognized / CCA / EAC / cULus Recognized / EAC

Ex Approvals

Approvals submitted

Approval details


| | | |
|---|-------|-------|
| CSA  | | |
| | B | D |
| Nominal current I _N | 8 A | 8 A |
| Nominal voltage U _N | 300 V | 300 V |


| | |
|---|-----|
| VDE Gutachten mit Fertigungsüberwachung  | |
| Nominal current I _N | 8 A |

Base strip - MCD 1,5/10-G1-3,81 - 1843156

Approvals

| | |
|--------------------|-------|
| Nominal voltage UN | 160 V |
|--------------------|-------|

| | |
|---|-------|
| IECEE CB Scheme  | |
| Nominal current IN | 8 A |
| Nominal voltage UN | 160 V |

| | | |
|--|-------|-------|
| cUL Recognized  | | |
| | B | D |
| Nominal current IN | 8 A | 8 A |
| Nominal voltage UN | 300 V | 300 V |

| | |
|--------------------|-------|
| CCA | |
| Nominal current IN | 8 A |
| Nominal voltage UN | 160 V |

| |
|-----|
| EAC |
|-----|

| | | |
|--------------------|-------|-------|
| cULus Recognized | | |
| | B | D |
| Nominal current IN | 8 A | 8 A |
| Nominal voltage UN | 300 V | 300 V |

| |
|-----|
| EAC |
|-----|

Accessories

Accessories

Coding element

Base strip - MCD 1,5/10-G1-3,81 - 1843156

Accessories

Coding profile - CP-MSTB - 1734634

Coding profile, is inserted into the slot on the plug or inverted header, red insulating material



Labeled terminal marker

Marker card - SK 3,81/2,8:FORTL.ZAHLEN - 0804109



Marker card, Card, white, labeled, Horizontal: Consecutive numbers 1 - 10, 11 - 20, etc. up to 91 - (99)100, Mounting type: Adhesive, for terminal block width: 3.81 mm, Lettering field: 3.81 x 2.8 mm

Marker pen

Marker pen - B-STIFT - 1051993



Marker pen, for manual labeling of unprinted Zack strips, smear-proof and waterproof, line thickness 0.5 mm

Terminal marking

Marker card - SK U/2,8 WH:UNBEDRUCKT - 0803883



Marker card, Sheet, white, unlabeled, can be labeled with: Plotter, Office printing systems, Mounting type: Adhesive, Lettering field: 186 x 2.8 mm

Additional products

Base strip - MCD 1,5/10-G1-3,81 - 1843156

Accessories

Printed-circuit board connector - FMC 1,5/10-ST-3,81 - 1748053



Plug component, Nominal current: 8 A, Rated voltage (III/2): 160 V, Number of positions: 10, Pitch: 3.81 mm, Connection method: Push-in spring connection, Color: green, Contact surface: Tin

Printed-circuit board connector - MC 1,5/10-ST-3,81 - 1803659



Plug component, Nominal current: 8 A, Rated voltage (III/2): 160 V, Number of positions: 10, Pitch: 3.81 mm, Connection method: Screw connection with tension sleeve, Color: green, Contact surface: Tin

Printed-circuit board connector - MCVW 1,5/10-ST-3,81 - 1827059



Plug component, Nominal current: 8 A, Rated voltage (III/2): 160 V, Number of positions: 10, Pitch: 3.81 mm, Connection method: Screw connection with tension sleeve, Color: green, Contact surface: Tin

Printed-circuit board connector - MCVR 1,5/10-ST-3,81 - 1827208



Plug component, Nominal current: 8 A, Rated voltage (III/2): 160 V, Number of positions: 10, Pitch: 3.81 mm, Connection method: Screw connection with tension sleeve, Color: green, Contact surface: Tin

Printed-circuit board connector - FRONT-MC 1,5/10-ST-3,81 - 1850741

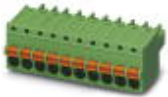


Plug component, Nominal current: 8 A, Rated voltage (III/2): 160 V, Number of positions: 10, Pitch: 3.81 mm, Connection method: Front screw connection, Color: green, Contact surface: Tin

Base strip - MCD 1,5/10-G1-3,81 - 1843156

Accessories

Printed-circuit board connector - FK-MCP 1,5/10-ST-3,81 - 1851122



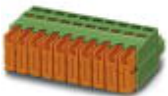
Plug component, Nominal current: 8 A, Rated voltage (III/2): 160 V, Number of positions: 10, Pitch: 3.81 mm, Connection method: Push-in spring connection, Color: green, Contact surface: Tin

Printed-circuit board connector - MCC 1/10-STZ-3,81 - 1852257



Plug component, Nominal current: 8 A, Rated voltage (III/2): 160 V, Number of positions: 10, Pitch: 3.81 mm, Connection method: Crimp connection, Color: green, Corresponding female crimp contacts with current [A] and conductor cross section range [mm²] data: 5A/MCC-MT 0,2-0,35 (1859988); 8A/MCC-MT 0,5-1,0 (1859991)

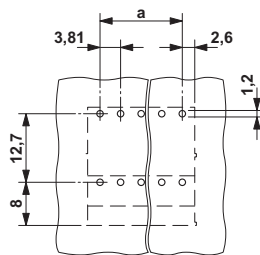
Printed-circuit board connector - QC 0,5/10-ST-3,81 - 1897474



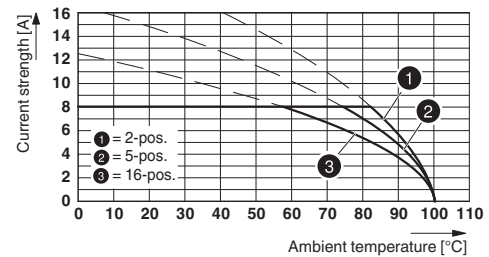
Plug component, Nominal current: 6 A, Rated voltage (III/2): 200 V, Number of positions: 10, Pitch: 3.81 mm, Connection method: Displacement connection, Color: green, Contact surface: Tin

Drawings

Drilling diagram



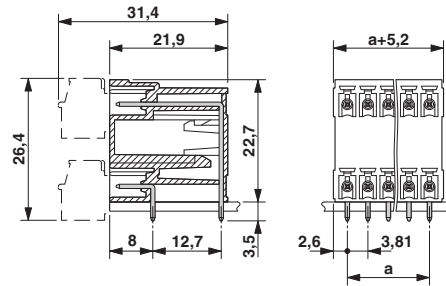
Diagram



Type: MC 1,5/...-ST-3,81 with MCD 1,5/...-G1-3,81

Base strip - MCD 1,5/10-G1-3,81 - 1843156

Dimensional drawing



Mouser Electronics

Authorized Distributor

Click to View Pricing, Inventory, Delivery & Lifecycle Information:

[Phoenix Contact:](#)

[1843156](#)