

This drawing involves proprietary design rights of Tyco Electronics Corporation, and all design, manufacture, reproduction, use and sale rights regarding the same are expressly reserved. It is submitted for a specific purpose and the recipient by accepting this drawing, assumes custody and control and agrees to take reasonable precautions; (a) that this drawing will not be copied and reproduced, in whole or in part, or its contents revealed in any manner, or to any person except to meet the purpose for which it was delivered and (b) that any special features peculiar to this design will not be incorporated in other projects without the expressed written permission of Tyco Electronics Corporation.

REVISIONS			
EC	REV	DESCRIPTION	DATE
CPR	A	NEW RELEASE	2/9/06

5. CONNECTOR INFORMATION

CONNECTOR	TYCO PART NUMBER	CONFIGURATION REF #	CONTACT	POSITION	CONTACT PITCH	VOLTAGE RATING*
SOCKET	6651673-1	MPK012	SIGNAL	3-8	2.50 [.098]	60 VOLTS
			POWER	1-2, 9-10	6.00 [.236]	60 VOLTS

*IAW UL 60950

NOTES: UNLESS OTHERWISE SPECIFIED.

1. PART NUMBER CHANGES AND OR DESIGN CHANGES AFFECTING ITEM INTERCHANGEABILITY REQUIRE PRIOR TYCO APPROVAL AND AUTHORIZATION BY REVISION TO THIS DRAWING.
2. MATERIALS:

INSULATORS: THERMOPLASTIC, GLASS REINFORCED, COLOR BLACK, UL94V-0 FLAMMABILITY RATED.

SIGNAL CONTACTS: BRASS ALLOY.

POWER CONTACTS: COPPER ALLOY.
3. FINISHES:

CONTACTS: GOLD PLATE .000030" MIN. THK, OVER NICKEL .000040" MIN. THICKNESS.

TERMINALS: TIN PLATE, MATTE FINISH .000100" MIN. THICKNESS.
4. ITEMS PROVIDED TO THIS SPECIFICATION TO BE PERMANENTLY IDENTIFIED PER THE FOLLOWING IDENTIFIER.

TYCO PART NO.

DATE CODE (e.g. 0609)

YEAR WEEK

XXXXXXX-X

XXXX

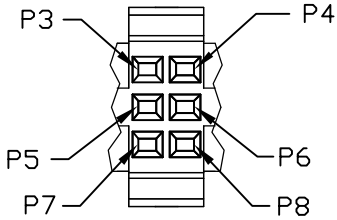
TYCO PART NUMBER

6651673-1

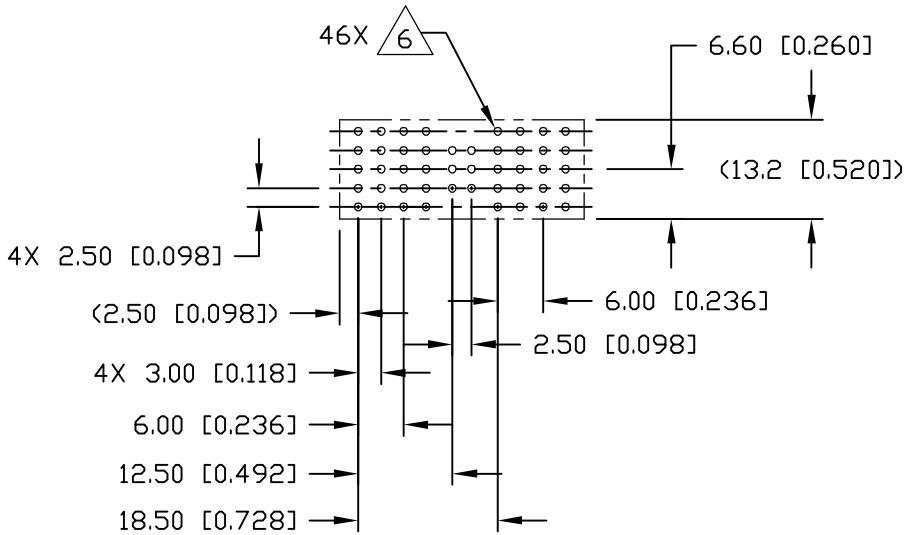
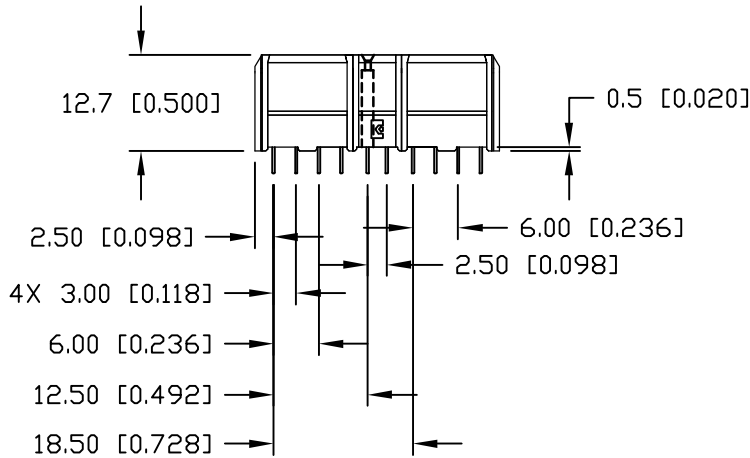
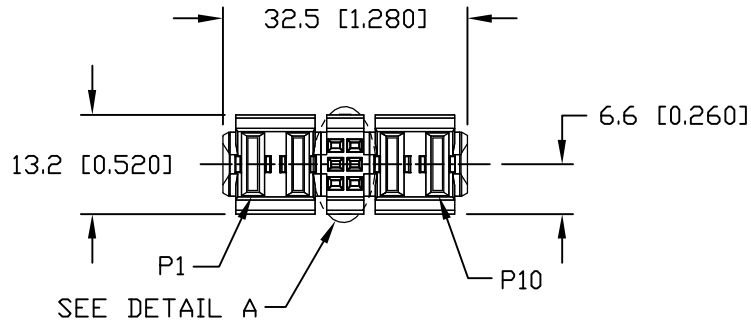
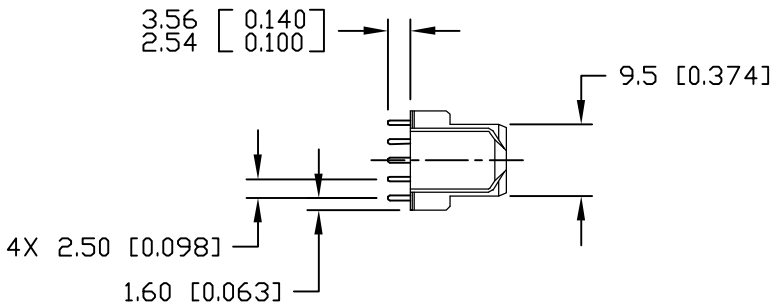
<div><div>MM OR MM [INCH]</div><div></div><div>THIRD ANGLE PROJECTION</div><div>UNLESS OTHERWISE SPECIFIED DIMENSIONS ARE IN METRIC [INCHES]</div><div>TOLERANCES</div><div>ANGLES ± .5°</div><div>DECIMALS</div><div>.XX ± .25 [.010]</div><div>.X ± .5 [.020]</div></div>	DRAWN R. F. A.	DATE 2/9/06	<div><div></div><div>Tyco Electronics Corporation Menlo Park, Ca 94025</div><div></div></div>		
	CHECKED		TITLE MINIPAK SOCKET CONNECTOR STRAIGHT, SOLDER TAILS		
	APPROVED				
	APPROVED D. CHAU	2/9/06			
	DCA APPROVED		SIZE B	DWG NUMBER C = 6651673	REV. A
ACAD FILE NUMBER		C6651673A.DWG		DWG SCALE 1=1	SH 1 OF 3

This drawing involves proprietary design rights of Tyco Electronics Corporation, and all design, manufacture, reproduction, use and sale rights regarding the same are expressly reserved. It is submitted for a specific purpose and the recipient by accepting this drawing, assumes custody and control and agrees to take reasonable precautions; (a) that this drawing will not be copied and reproduced, in whole or in part, or its contents revealed in any manner, or to any person except to meet the purpose for which it was delivered and (b) that any special features peculiar to this design will not be incorporated in other projects without the expressed written permission of Tyco Electronics Corporation.

REVISIONS			
EC	REV	DESCRIPTION	DATE
		SEE SHEET 1	



DETAIL A

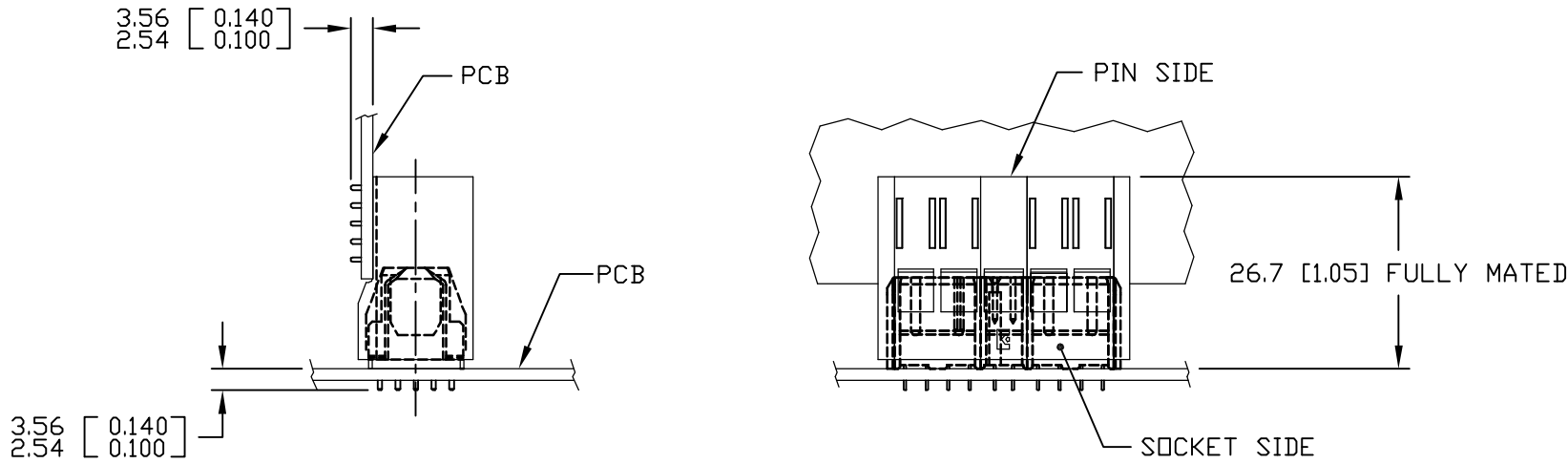


RECOMMENDED PC LAYOUT

<div>← MM INCH</div> <div>OR MM [INCH]</div> <div></div> <div>THIRD ANGLE PROJECTION</div> <div>UNLESS OTHERWISE SPECIFIED DIMENSIONS ARE IN METRIC [INCHES]</div> <div>TOLERANCES</div> <div>ANGLES ± .5°</div> <div>DECIMALS</div> <div>.XX ± .25 [.010]</div> <div>.X ± .5 [.020]</div>	DRAWN R. F. A.	DATE 2/9/06	<div>tyco Electronics</div> <div>Tyco Electronics Corporation Menlo Park, Ca 94025</div> <div>ELCON</div>		TITLE MINIPAK SOCKET CONNECTOR STRAIGHT, SOLDER TAILS
	CHECKED				
	APPROVED				
	APPROVED D. CHAU	2/9/06			
	DCA APPROVED		SIZE B	DWG NUMBER C = 6651673	REV. A
ACAD FILE NUMBER		C6651673A.DWG		DWG SCALE 1=1	SH 2 OF 3

This drawing involves proprietary design rights of Tyco Electronics Corporation, and all design, manufacture, reproduction, use and sale rights regarding the same are expressly reserved. It is submitted for a specific purpose and the recipient by accepting this drawing, assumes custody and control and agrees to take reasonable precautions; (a) that this drawing will not be copied and reproduced, in whole or in part, or its contents revealed in any manner, or to any person except to meet the purpose for which it was delivered and (b) that any special features peculiar to this design will not be incorporated in other projects without the expressed written permission of Tyco Electronics Corporation.

REVISIONS			
EC	REV	DESCRIPTION	DATE
		SEE SHEET 1	



MATED CONDITION

- △ 6 SOLDER TERMINATION AREA
RECOMMENDED PRINTED CIRCUIT HOLE
DRILLED HOLE: Ø1.15 [0.0453] ±0.13 [0.0005]
COPPER PLATE: .025-.050 [0.001-.002] MINIMUM (PER SURFACE)
TIN PLATE: .0005 [0.00002] MINIMUM (PER SURFACE)

<div>MM OR MM [INCH]</div> <div></div> <div>THIRD ANGLE PROJECTION</div> <div>UNLESS OTHERWISE SPECIFIED DIMENSIONS ARE IN METRIC [INCHES]</div> <div>TOLERANCES</div> <div>ANGLES ± .5°</div> <div>DECIMALS</div> <div>.XX ± .25 [0.010]</div> <div>.X ± .5 [0.020]</div>	DRAWN R. F. A.	DATE 2/9/06	<div> Tyco Electronics Corporation Menlo Park, Ca 94025 </div> <div>TITLE</div> <div>USER INFORMATION AND MATED CONDITION</div>		
	CHECKED				
	APPROVED				
	APPROVED D. CHAU	2/9/06	SIZE B	DWG NUMBER C = 6651673	REV. A
	DCA APPROVED		ACAD FILE NUMBER C6651673A.DWG		
			DWG SCALE 1=1		SH 3 OF 3

Mouser Electronics

Authorized Distributor

Click to View Pricing, Inventory, Delivery & Lifecycle Information:

[TE Connectivity:](#)

[6651673-1](#)