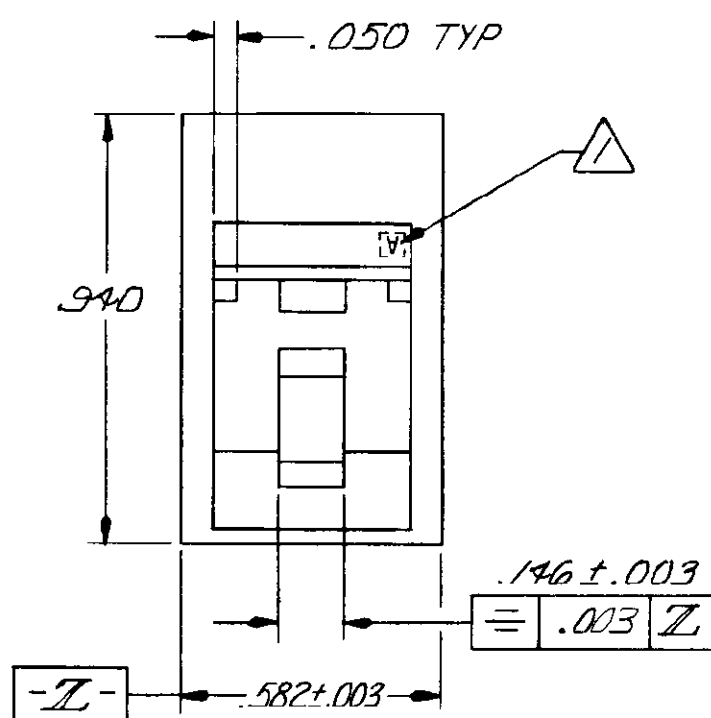


THIS DRAWING IS UNPUBLISHED. RELEASED FOR PUBLICATION, 19
© COPYRIGHT 19 BY AMP INCORPORATED, HARRISBURG, PA. ALL INTERNATIONAL RIGHTS
RESERVED. AMP PRODUCTS MAY BE COVERED BY U.S. AND FOREIGN PATENTS AND/OR PATENTS PENDING.

REVISIONS					
P	F	ZONE	LTR	DESCRIPTION	DATE APPROVED
1	✓		D	REL. WAS 5106-70	12-81
2	✓		A	REV PLX ECN 481	12-85 wal
3	✓		B	REV ECN 856	10-85 Red J
4	✓		C	REV LOC & DIST AD-4171	11-27-89 BF
5	✓		D	REV PER 0010-0489-44	4-8-94

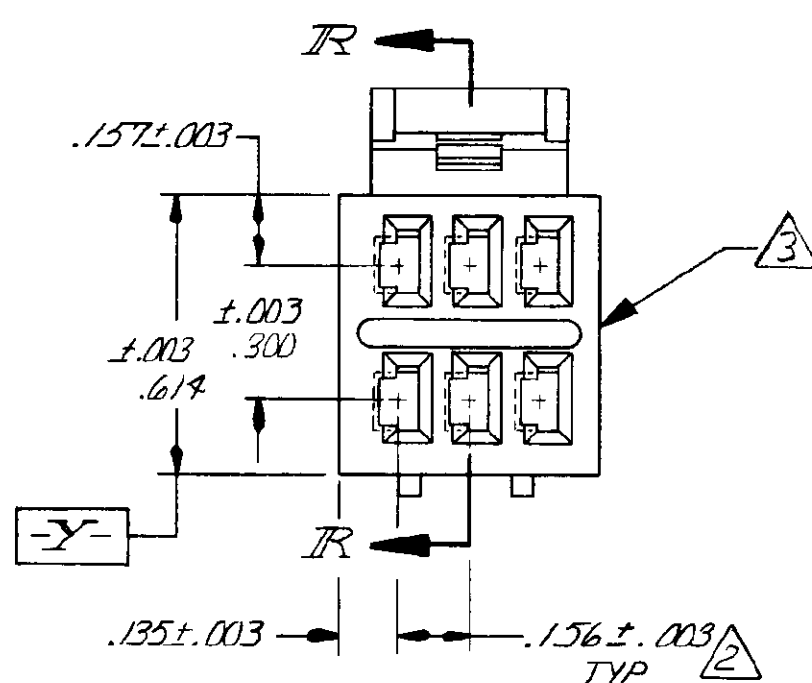
D

D



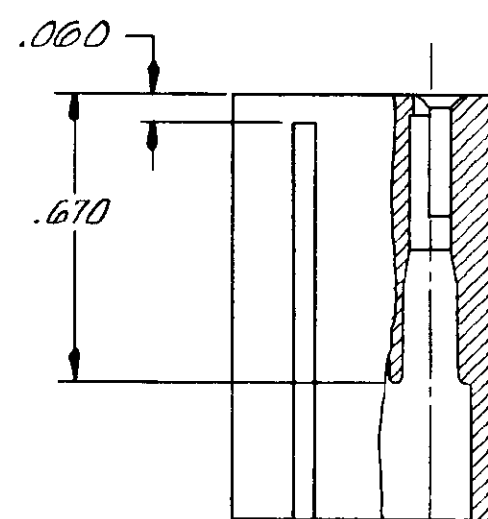
C

C



B

B



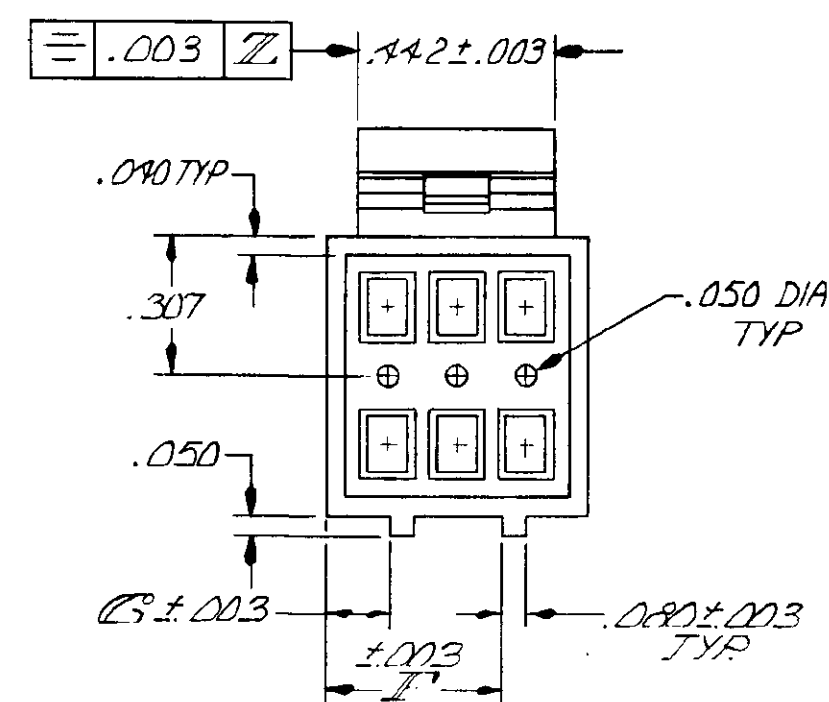
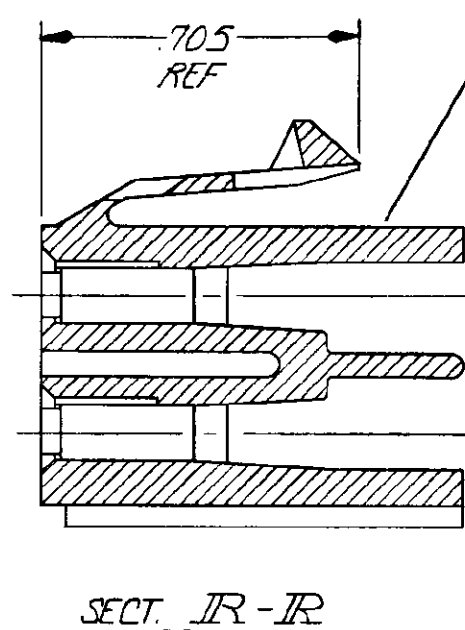
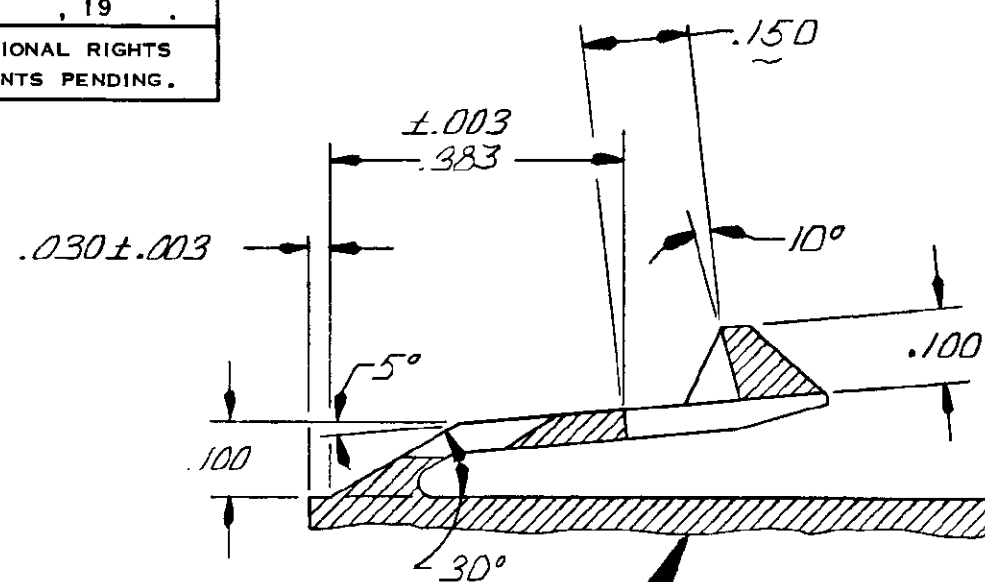
A

A

1 HOUSING IDENT. LETTER, .093 HIGH CHARS., RAISED .003-.005 HIGH IN APPROX. AREA SHOWN. SEE TABLE FOR LETTER.

2 TOLERANCE NON-CUMULATIVE.

3 BLUSHING PERMISSIBLE IN THIS AREA.



B	.338	.188	G	103366-2
A	.358	.138	G	103366-1
HSG. IDENT. LETTER	F	G	NO. OF POS.	PART NO

UNLESS OTHERWISE SPECIFIED DIMENSIONS ARE IN INCHES. TOLERANCES ON: DECIMALS ± .005 ANGLES ± 0°30'	CONTRACT NO DR A. Mayer 12-21-83 CHK Carl S. Hammel 12-22-83 APPD Carl S. Hammel 12-22-83 APPD Carl S. Hammel 12-22-83 DSGN APPD OTHER APPD	AMP AMP INCORPORATED Harrisburg, Pa. 17105 NAME HOUSING, MOD I, DBL. ROW, .156 X .300 E, 6 POS., WITH POLARIZING BARS & LATCH SIZE C FSCM NO 00779 DRAWING NO 103366 SCALE SHEET 1 OF 1
-------------------------------------------------------------------------------------------------------------	---------------------------------------------------------------------------------------------------------------------------------------------------------------------------	--------------------------------------------------------------------------------------------------------------------------------------------------------------------------------------------------------------------------------------------------------------

Mouser Electronics

Authorized Distributor

Click to View Pricing, Inventory, Delivery & Lifecycle Information:

[TE Connectivity:](#)

[103366-1](#)