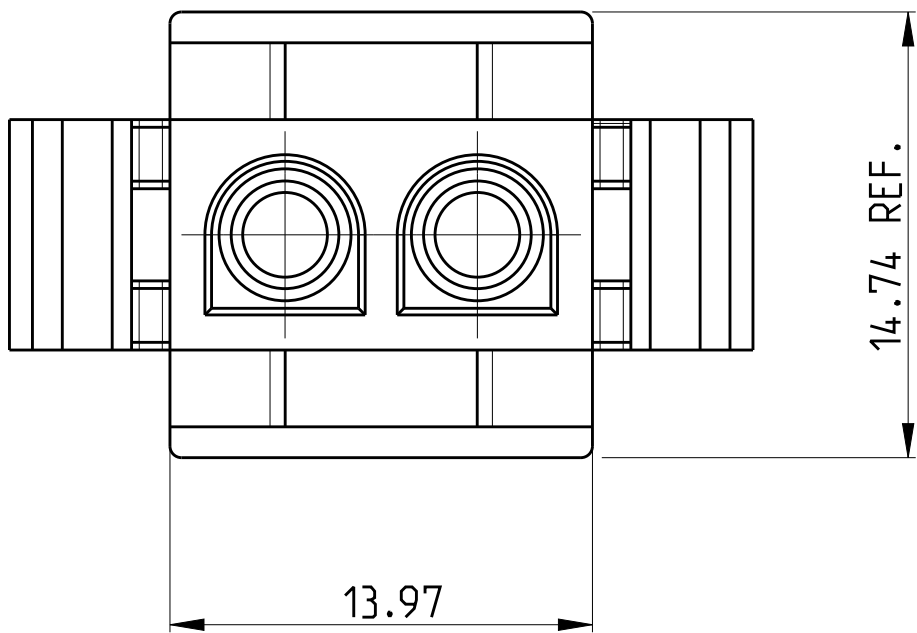
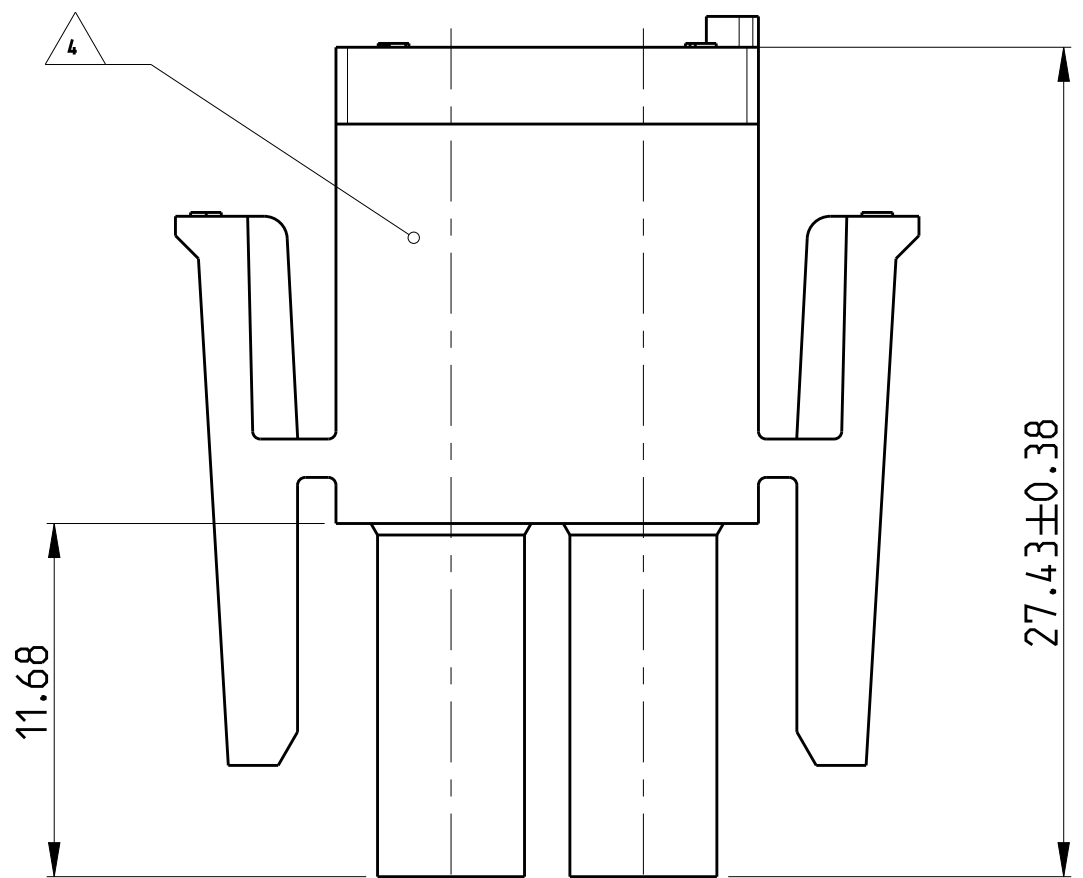
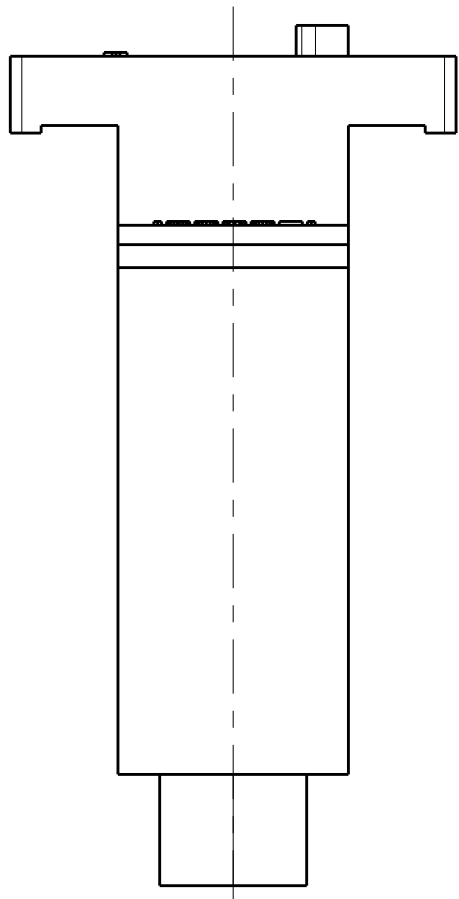


LOC	DIST	REVISIONS					
		P	LTR	DESCRIPTION	DATE	DWN	APVD
A1	2		B6	REVISED PER ECR-17-014951	16OCT2017	BDA	KR

D



C

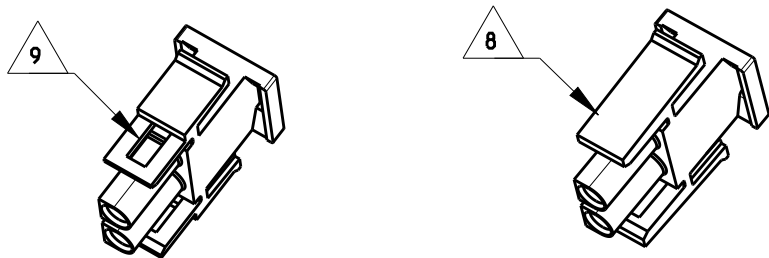


B

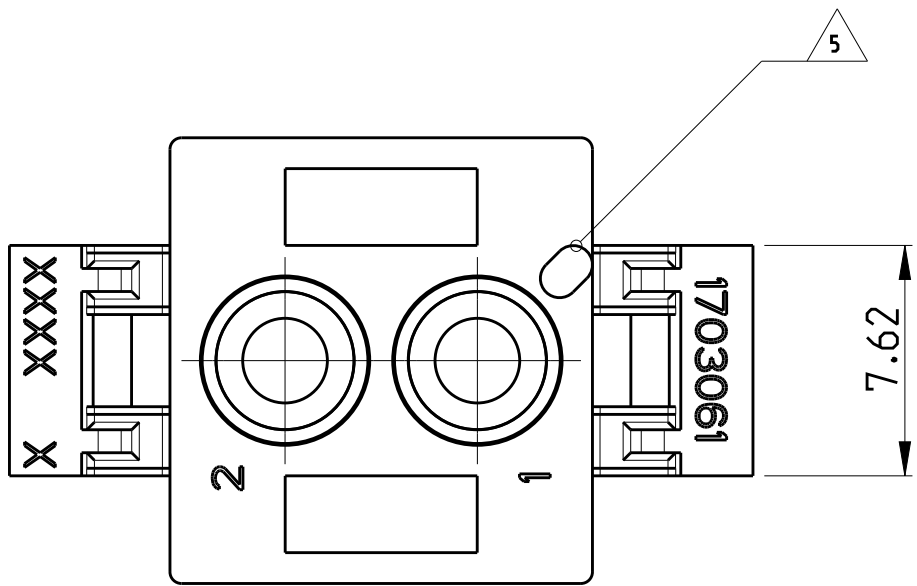
- MATES WITH APPROPRIATE UNIVERSAL MATE-N-LOK CAP OR HEADER
- SMALL NICKS ARE PERMITTED ON THE CIRCUIT TOWERS WHICH COULD INCREASE THE INITIAL HOUSING MATING FORCE BY UP TO 4.4 NEWTONS. NO INDIVIDUAL NICKED TOWER SHALL INCREASE THIS FORCE BY OVER 5.5 NEWTONS.
- DIMENSIONS SHOWN REPRESENT PRODUCT IN DRY, AS MOLDED, CONDITION. ADDITIONAL 2% GROWTH DUE TO SUBSEQUENT MOISTURE ABSORPTION MAY OCCUR AND SHOULD BE ACCOUNTED FOR.

- UNDERWRITERS RECOGNIZED COMPONENT LOGO AND CSA CERTIFICATION LOGO TO BE LOCATED ONCE ON ANY SIDE OF HOUSING
- POSITION #1 LOCATOR FEATURE MAY BE ROUND OR OBLONG (AS DEPICTED)
- MATERIAL CORRESPONDING TO THE REQUIREMENTS OF IEC 60335 (INCL. GLOW WIRE TEST 750 ° C, WITHOUT FLAME)
- PRELIMINARY PART NOT RELEASED FOR PRODUCTION
- NO LATCH WINDOW PRESENT.
- LATCH WINDOW PRESENT.


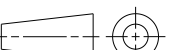
A



1-1703061-3



6/9	1-1703061-3	1	PA66 UL94 V0 GW T 750 °C	NATURAL
6/8	1-1703061-2	A	PA66 UL94 V0 GW T 750 °C	NATURAL
7/8	1-1703061-1	1	PA6 UL94 V0	NATURAL
6/8	1703061-4	A	PA6 UL94 V2 GW T 750 °C	BLACK
6/8	1703061-3	A	PA6 UL94 V2 GW T 750 °C	RED
6/8	1703061-2	A	PA6 UL94 V2 GW T 750 °C	BLUE
6/8	1703061-1	A	PA6 UL94 V2 GW T 750 °C	NATURAL
REMARK	PN	REV	MATERIAL	COLOUR

THIS DRAWING IS A CONTROLLED DOCUMENT.		DWN MAHNKE, B. 17OCT2008 CHK ZITZ, A. 26APR2004 APVD BLEICHER, M. 27APR2004		 TE Connectivity			
DIMENSIONS: mm		TOLERANCES UNLESS OTHERWISE SPECIFIED: 0 PLC ± 1 PLC ± 2 PLC ±0.13 3 PLC ± 4 PLC ± ANGLES ±0°30' FINISH		NAME PLUG, 2 CIRCUIT, UNIVERSAL MATE-N-LOK -			
							
MATERIAL							
SEE TABLE							
-		PRODUCT SPEC 108-1031 APPLICATION SPEC 114-1010 WEIGHT 2.422 g		SIZE A2	CAGE CODE 00779	DRAWING NO C=1703061	RESTRICTED TO -
CUSTOMER DRAWING				SCALE 4:1		SHEET 1 OF 1	REV B6

Mouser Electronics

Authorized Distributor

Click to View Pricing, Inventory, Delivery & Lifecycle Information:

[TE Connectivity:](#)

[1703061-2](#)