

4

3

2

1

THIS DRAWING IS UNPUBLISHED.

RELEASED FOR PUBLICATION

© COPYRIGHT

ALL RIGHTS RESERVED.

LOC DIST


REVISIONS

P	LTR	DESCRIPTION	DATE	DWN	APVD

# REPLACED BY OCEAN STYLE APPLICATOR PART NUMBER

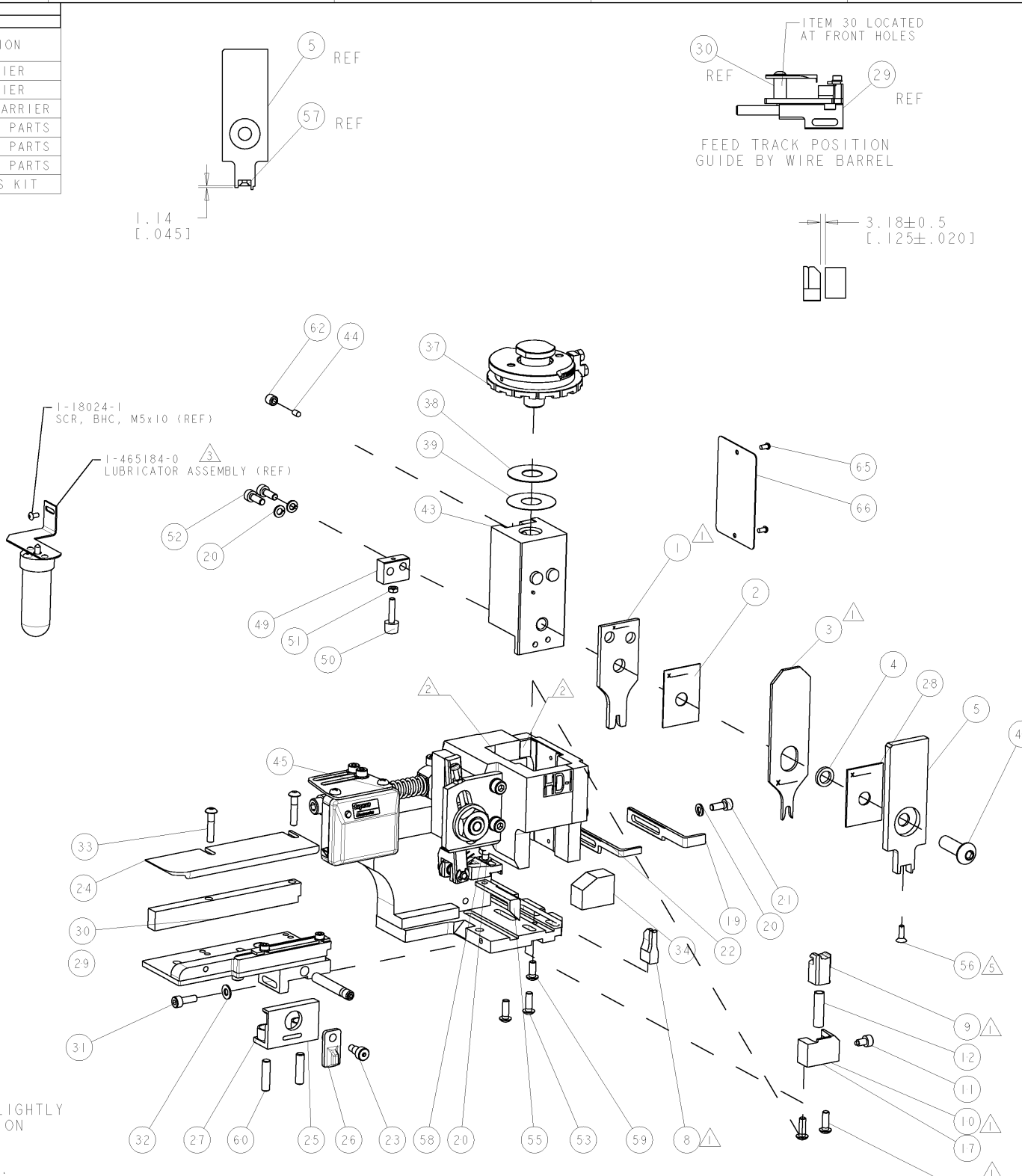
FOR REPLACEMENT PARTS FOR APPLICATOR REFER TO ADDITIONAL PAGE(S). SPARE PARTS KIT (IF LISTED) WILL REMAIN AVAILABLE.

THE REPLACEMENT OCEAN STYLE APPLICATOR HAS THE SAME TERMINATOR/PRESS INTERFACE AS APPLICATOR

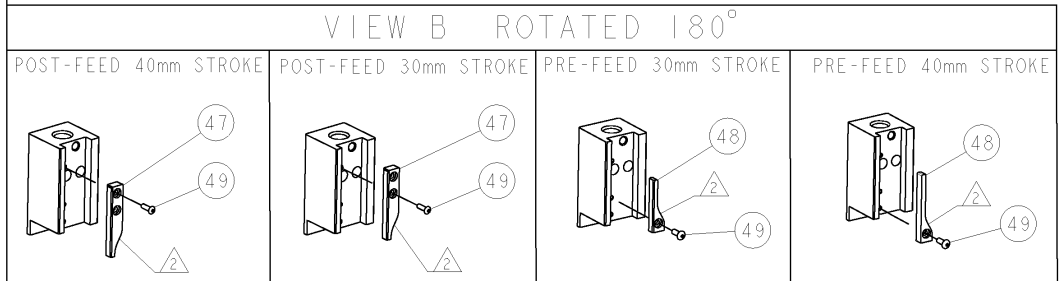
THIS DRAWING IS A CONTROLLED DOCUMENT.		DWN	 TE Connectivity														
DIMENSIONS:		CHK															
TOLERANCES UNLESS OTHERWISE SPECIFIED:		APVD	NAME														
<table border="0"> <tr><td>0 PLC</td><td>±</td></tr> <tr><td>1 PLC</td><td>±</td></tr> <tr><td>2 PLC</td><td>±</td></tr> <tr><td>3 PLC</td><td>±</td></tr> <tr><td>4 PLC</td><td>±</td></tr> <tr><td>ANGLES</td><td>±</td></tr> </table>		0 PLC	±	1 PLC	±	2 PLC	±	3 PLC	±	4 PLC	±	ANGLES	±	PRODUCT SPEC	RESTRICTED TO		
0 PLC	±																
1 PLC	±																
2 PLC	±																
3 PLC	±																
4 PLC	±																
ANGLES	±																
MATERIAL		APPLICATION SPEC	SIZE	CAGE CODE	DRAWING NO												
FINISH		WEIGHT	A3		C-												
			SCALE	SHEET	OF REV												

PART NUMBER	REV	TERMINATOR	FEED TYPE	DESCRIPTION
1530013-1	A	LEADMAKER	MECH POST FEED	CUTS CARRIER
1530013-2	A	BENCH	MECH PRE FEED	CUTS CARRIER
1530013-6	A	LEADMAKER	MECH POST FEED	CONTINUOUS CARRIER
7-1530013-1	A	LEADMAKER	MECH POST FEED	-1 AND SPARE PARTS
7-1530013-2	A	BENCH	MECH PRE FEED	-2 AND SPARE PARTS
7-1530013-6	A	LEADMAKER	MECH POST FEED	-6 AND SPARE PARTS
7-1530013-7	A	-	-	SPARE PARTS KIT

CRIMP DATA		TE TERMINAL		TE CRIMP SPECS	
TERMINAL NAME: ECONOSEAL RECEPT CONTACT .070 TYPE					
CRIMP	SIZE	TYPE	RANGE		
WIRE	2.29 [.090 IN]	F	0.5mm-1.29mm <sup>2</sup> or 20-16 AWG		
INSUL	3.68 [.145 IN]	O	2.0-2.6 [.079 -.102 IN]		
WIRE STRIP LENGTH 4.00-4.50 [.157-.177]		APPL INSTRUCTIONS 408-8322/8490			
TERMINAL APPL SPEC		114-5082		FEED 9.80 [.386 IN]	
TERMINALS APPLIED					
TERMINAL	SEAL				
171662	172888				
-	176886				
-	-				
-	-				
WIRE SIZE	CRIMP HEIGHT	REF SETTINGS			
1.25 mm <sup>2</sup>	1.52 ± 0.05 [.060 ± .002 IN]	B3			
1.0 mm <sup>2</sup>	1.40 ± 0.05 [.055 ± .002 IN]	C4			
0.85 mm <sup>2</sup>	1.37 ± 0.05 [.054 ± .002 IN]	C5			
0.75 mm <sup>2</sup>	1.34 ± 0.05 [.053 ± .002 IN]	C7			
0.50 mm <sup>2</sup>	1.24 ± 0.05 [.049 ± .002 IN]	D5			



- △ RECOMMENDED SPARE PARTS
- 2. GREASE RAM, CAM, CAM FOLLOWER AND FEED ROD LIGHTLY
- 3. LUBRICATE DAILY PER THE APPLICATOR INSTRUCTION SHEET SUPPLIED WITH THE APPLICATOR
- △ THIS APPLICATOR APPLIES TERMINAL WITH A SEAL.
- △ APPLY TORQ-SEAL IN ALLEN SOCKET TO FILL HOLE AFTER FLAT HD HAS BEEN ADJUSTED TO CORRECT HEIGHT AT QUALIFICATION. APPLY #1-23419-5 LOC-TITE TO THREADS.



ITEM NO	DESCRIPTION	ITEM NO	DESCRIPTION
82			
81			
80			
79			
78			
77			
76			
75			
74			
-77	-76	-72	-71
-6	-2	-1	
	PART NO		DESCRIPTION

SET UP GAGE  
458637-3

LOC		DIST		REVISIONS			
P	REV	DATE	BY	APPV	DESCRIPTION	DATE	BY
A	1	02MAR06	BH		REVIS		
A	1	06AUG07	BH		ECR-07-018503		

ITEM NO	DESCRIPTION	ITEM NO	DESCRIPTION
73			
72			
71			
70	DOCUMENTATION PACKAGE		
69			
68			
67			
66	PLATE, IDENTIFICATION		
65	SCREW, DRIVE		
64			
63			
62	SCR, SET, CUP POINT M6 X 6.0		
61			
60	SCR, SET, FLT POINT M5 X 20.0		
59	SCR, BTN SKT HD CAP (M4 X 10.0)		
58	SCR, HEX HD CAP M4 X 8.0		
57			
56	SCR, FLT SKT HD CAP M3 X 10.0		
55	PAWL, FEED		
54			
53	SCR, BTN SKT HD CAP (M4 X 12.0)		
52	SCR, SKT HD CAP M4 X 12.0		
51	NUT, HEX, REG M3		
50	BUMPER, HOLD DOWN		
49	SPACER, TONKER		
48	SCR, BTN SKT HD CAP (M3 X 10.0)		
47	CAM, UNIVERSAL PRE FEED		
46	CAM, UNIVERSAL POST-FEED		
45	APPLICATOR SUBASSEMBLY, HDI		
44	PLUG, NYLON		
43	RAM		
42	SCR, BTN SKT HD CAP (M8 X 25.0)		
41			
40			
39	SHIM SUB-ASSY		
38	SHIM		
37	FINE ADJUST HEAD SUBASSY		
36			
35			
34	SUPPORT, TERMINAL		
33	SCR, BTN SKT HD CAP (M4 X 20.0)		
32	WASHER, FLAT, REG M4		
31	SCR, SKT HD CAP M4 X 12.0		
30	SPACER, STRIP GUIDE		
29	STRIP GUIDE ASSEMBLY		
28	SPACER, CRIMPER		
27	SPRING, COMPRESSION		
26	LEVER, DRAG RELEASE		
25	DRAG, TERMINAL		
24	PLATE, STRIP GUIDE		
23	SCR, SKT HD SHLDR 5.0 DIA X 6.0		
22	STRIPPER		
21	SCR, SKT HD CAP M4 X 10.0		
20	WASHER, SPRG LOCK, REG M4		
19	STRIPPER		
18			
17	SHEAR HOLDER, FRONT		
16			
15			
14			
13			
12	SPRING, COMPRESSION		
11	STOP, SHEAR		
10	SHEAR HOLDER, FRONT, CUT		
9	FLOATING SHEAR, FRONT		
8	ANVIL, COMBINATION		
7			
6			
5	DEPRESSOR, SHEAR		
4	BLOCK, CRIMPER SPACER		
3	CRIMPER, INSULATION 0		
2	SPACER, CRIMPER		
1	CRIMPER, WIRE PREMIUM		

DIMENSIONS: mm [IN]		TOLERANCES UNLESS OTHERWISE SPECIFIED:		DWG: B. HIGMAN 02MAR2006		CHK: B. HIGMAN 02MAR2006		APPR: TELBIN 02MAR2006		NAME: TELBIN 02MAR2006		Tyco Electronics Harrisburg, PA 17105-3608	
MATERIAL:		FINISH:		APPLICATION SPEC: See Table		WEIGHT:		SIZE: CARE CODE: DRAWING NO: 00779 C-1530013		RESTRICTED TO:		SCALE: 3:5 SHEET 1 OF 1 REV: A	

# Mouser Electronics

Authorized Distributor

Click to View Pricing, Inventory, Delivery & Lifecycle Information:

[TE Connectivity:](#)

[1530013-6](#)