

4

3

2

1

THIS DRAWING IS UNPUBLISHED.

RELEASED FOR PUBLICATION

© COPYRIGHT

ALL RIGHTS RESERVED.

LOC

DIST


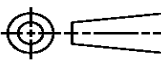
REVISIONS

| P | LTR | DESCRIPTION | DATE | DWN | APVD |
|---|-----|---------------|-----------|-----|------|
| | H1 | ECR-14-005483 | 20MAY2014 | GK | HMR |
| | | | | | |
| | | | | | |
| | | | | | |

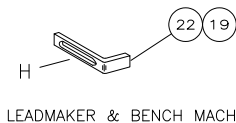
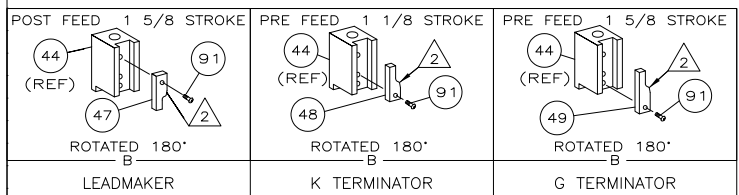
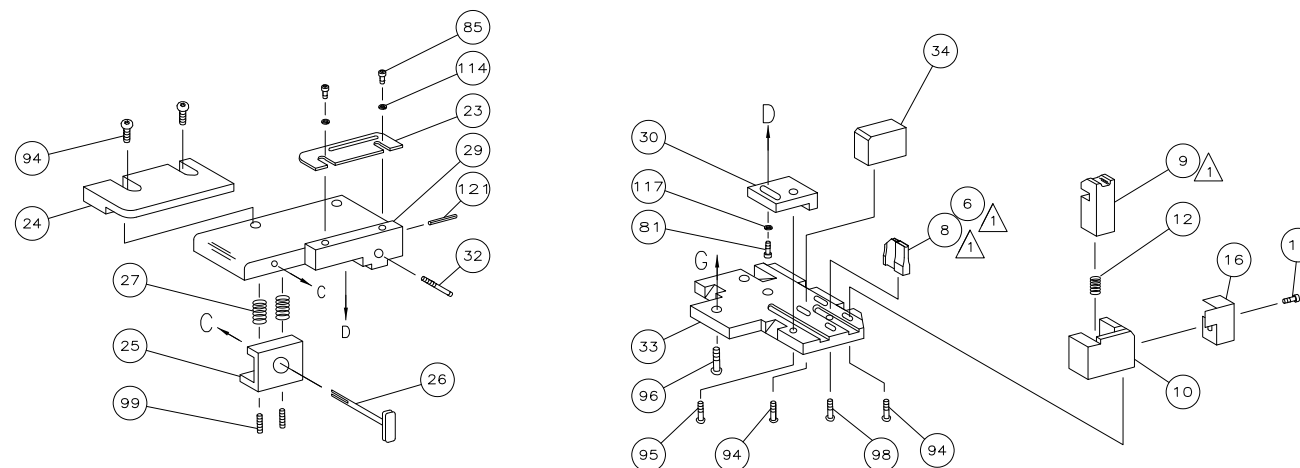
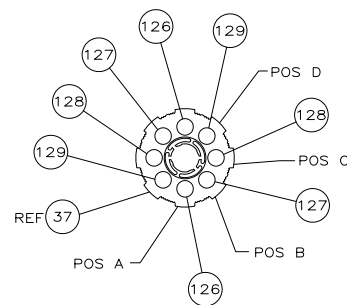
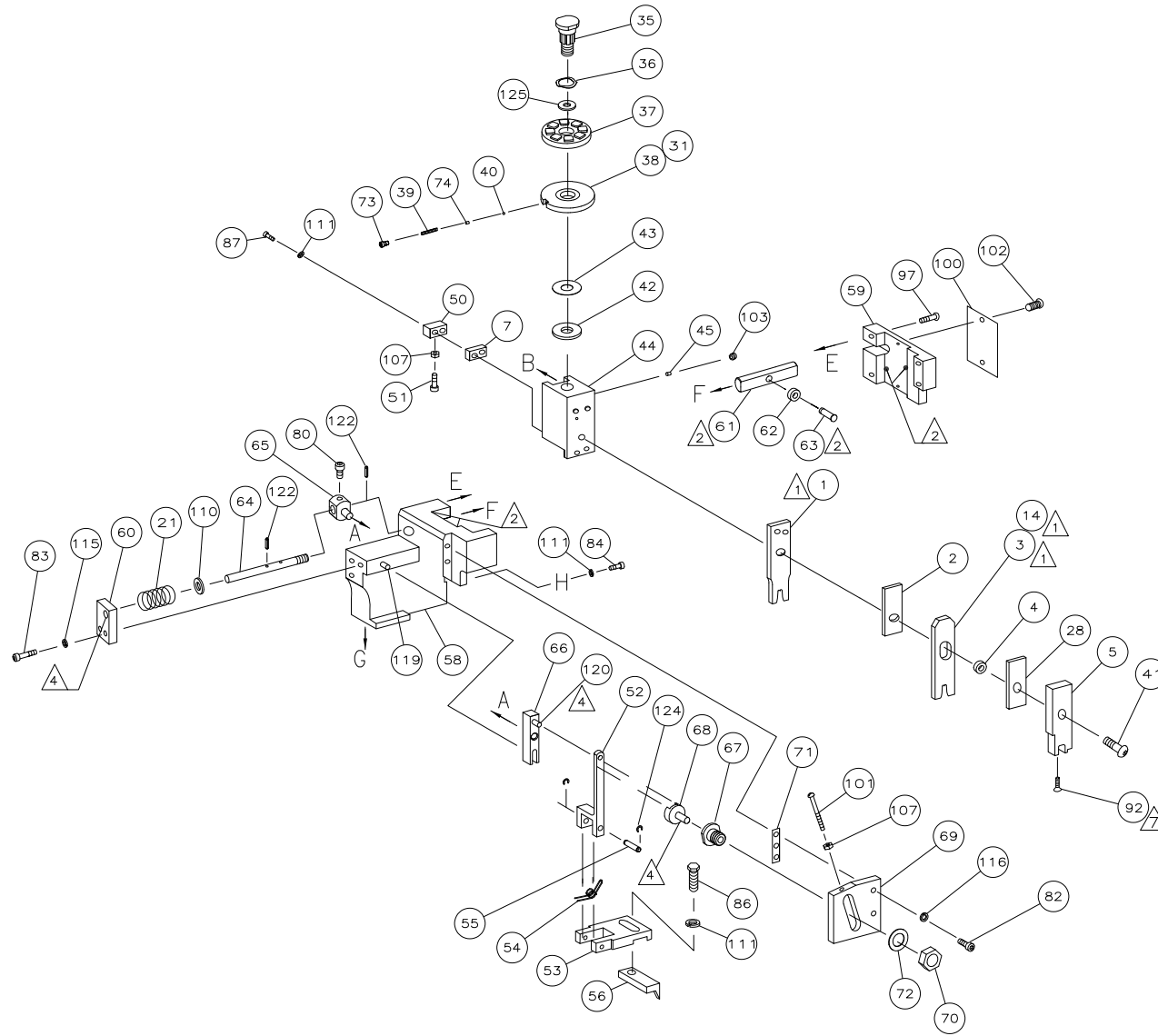
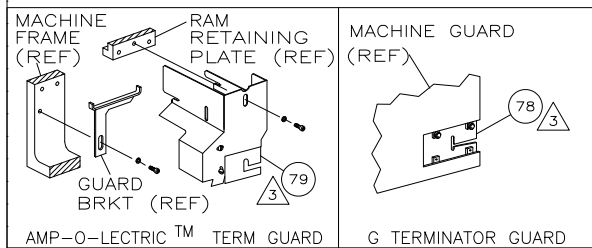
REPLACED BY OCEAN STYLE APPLICATOR PART
NUMBER 2151881-1

FOR REPLACEMENT PARTS FOR APPLICATOR 680104
REFER TO ADDITIONAL PAGE(S). SPARE PARTS KIT (IF LISTED)
WILL REMAIN AVAILABLE.

THE REPLACEMENT OCEAN STYLE APPLICATOR HAS THE
SAME TERMINATOR/PRESS INTERFACE AS APPLICATOR
680104

| | | | | | |
|---|--|--|--|---|--|
| THIS DRAWING IS A CONTROLLED DOCUMENT. | | DWN GOPALAKRISHNA HV | |  TE Connectivity | |
| DIMENSIONS: | | CHK RAGHAVENDRA | | | |
|  | | TOLERANCES UNLESS OTHERWISE SPECIFIED: | | APVD RAGHAVENDRA | |
| | | 0 PLC ± | | NAME SIDE FEED HDM APPLICATOR | |
| | | 1 PLC ± | | PRODUCT SPEC | |
| MATERIAL | | 2 PLC ± | | APPLICATION SPEC | |
| | | 3 PLC ± | | SIZE A3 | |
| FINISH | | 4 PLC ± | | CAGE CODE | |
| | | ANGLES ± | | DRAWING NO C- 680104 | |
| | | | | RESTRICTED TO | |
| | | WEIGHT | | SCALE | |
| | | CUSTOMER DRAWING | | SHEET 1 OF 3 | |
| | | | | REV H1 | |

AMP 4805 REV 31MAR2000



Mouser Electronics

Authorized Distributor

Click to View Pricing, Inventory, Delivery & Lifecycle Information:

[TE Connectivity:](#)

[680104-1](#)