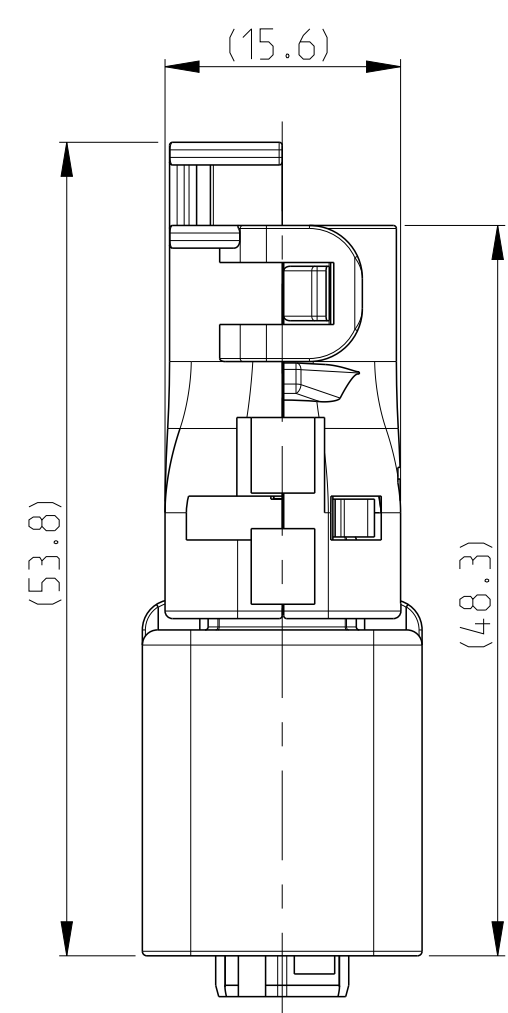
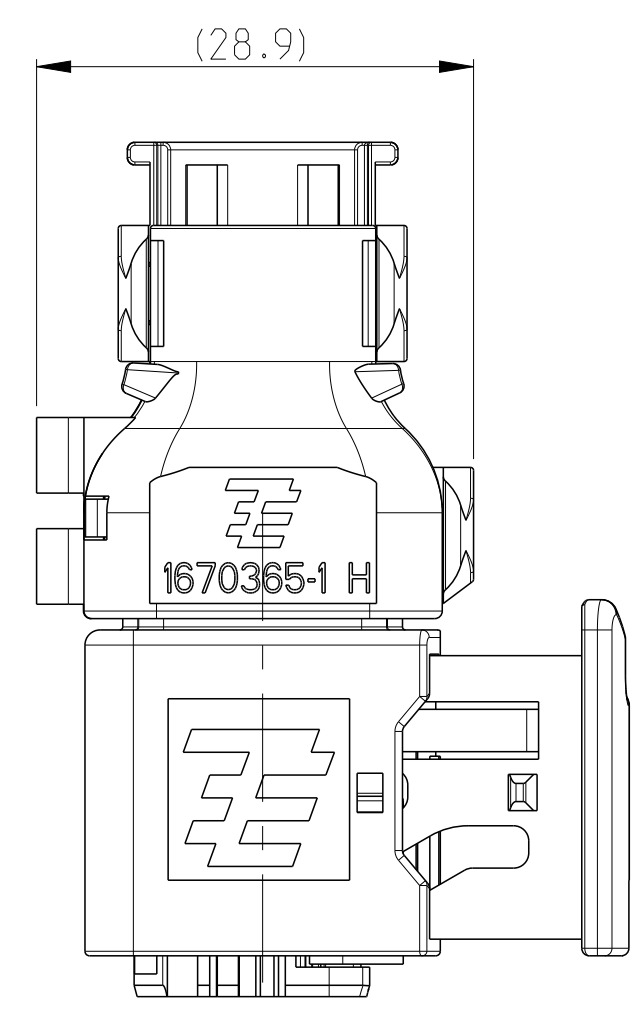
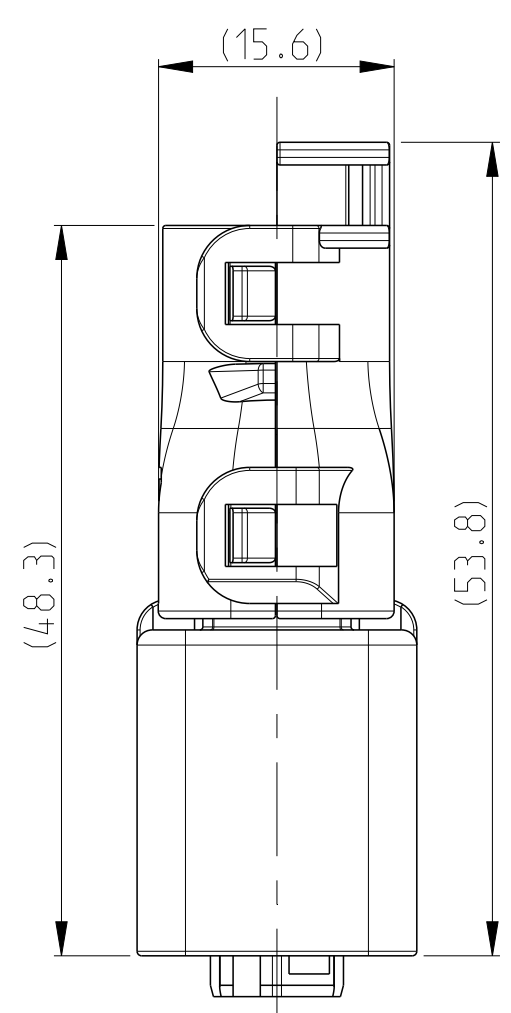
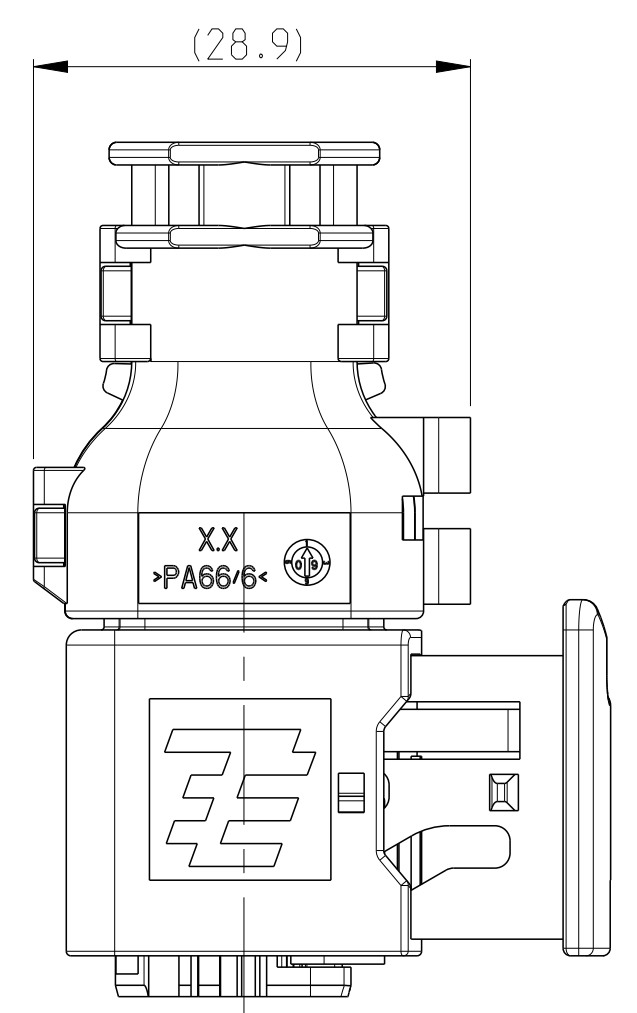


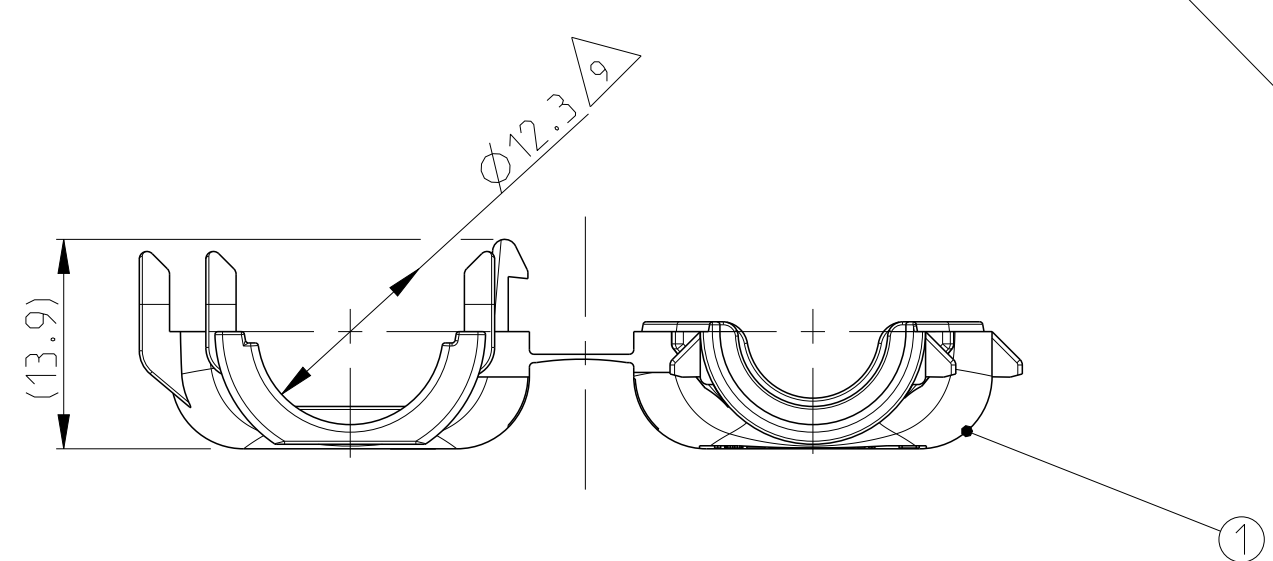
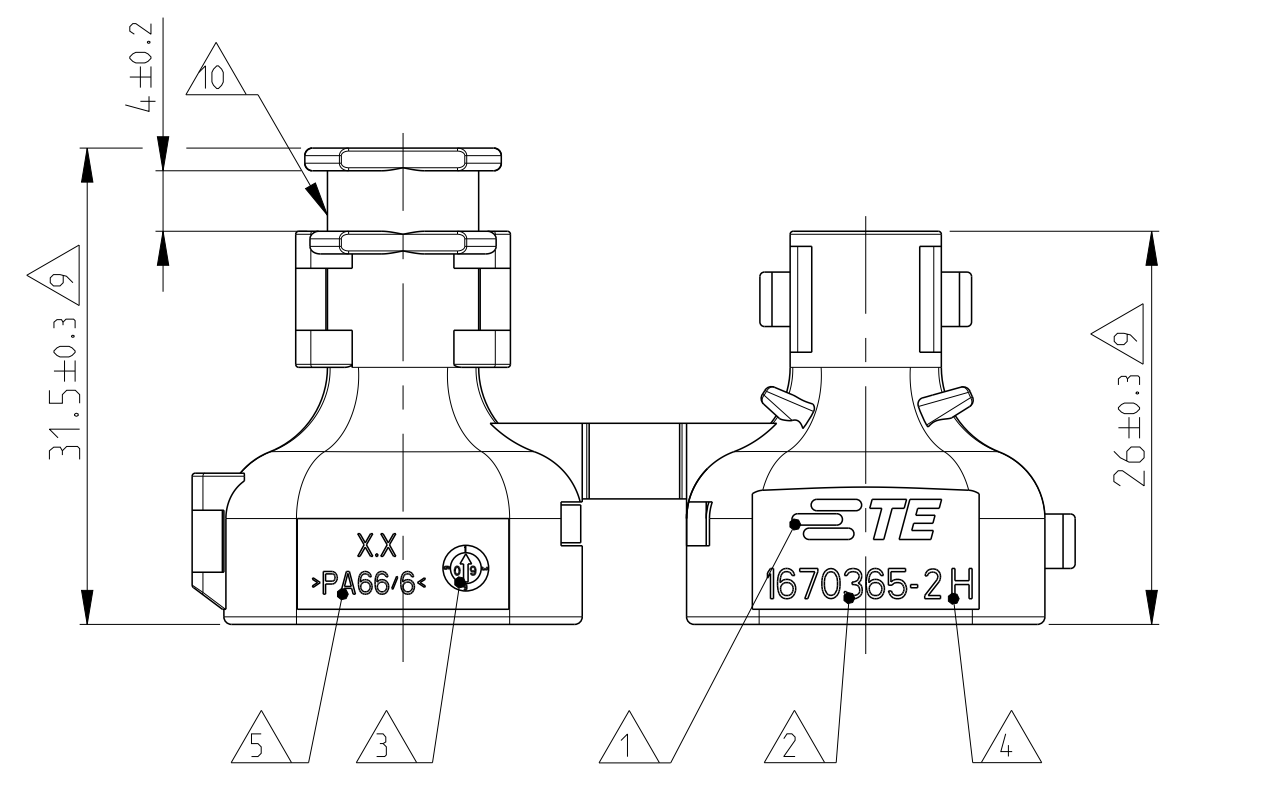
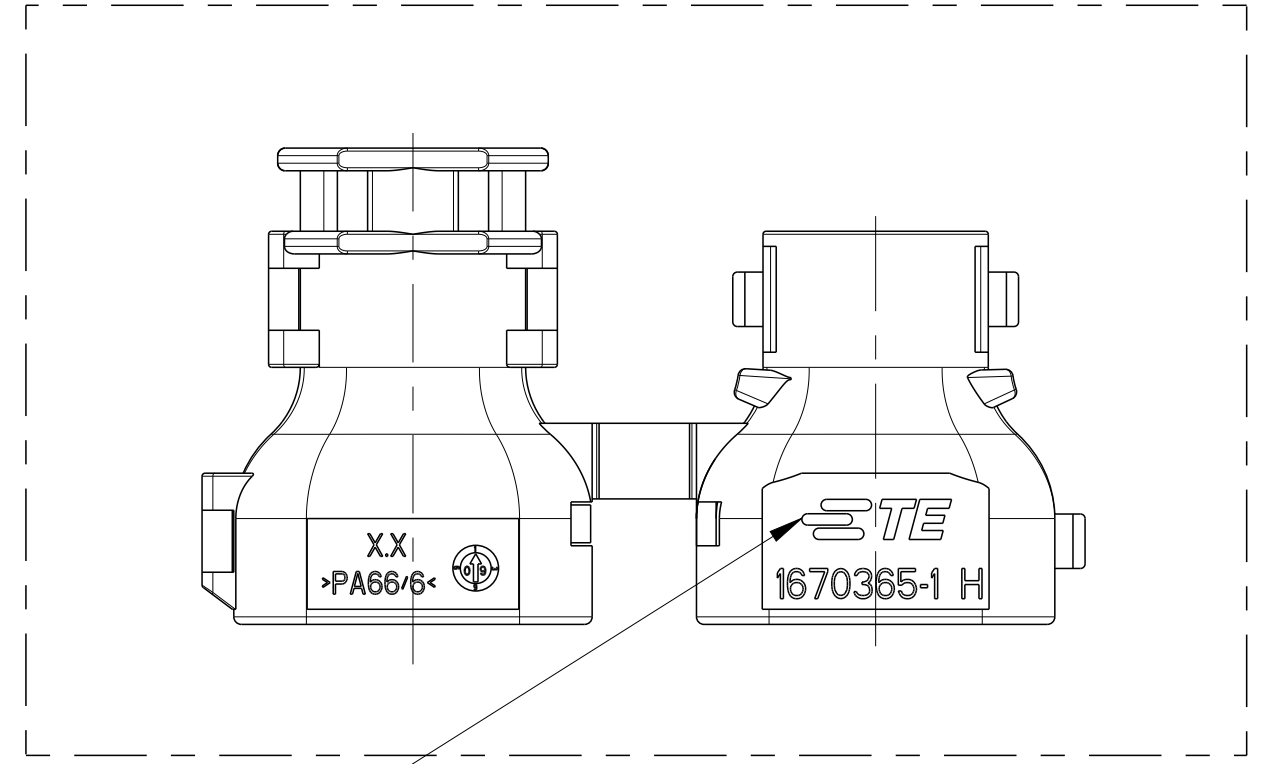
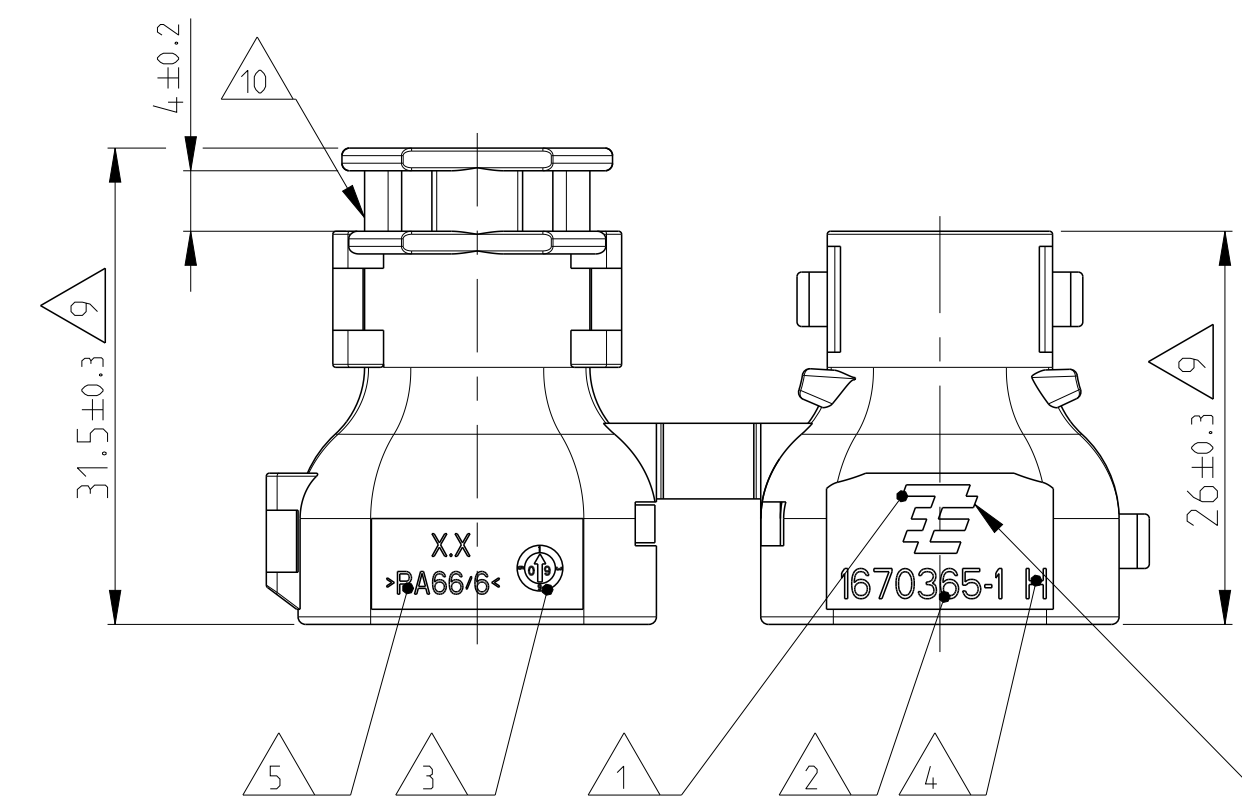
11 MOUNTED COVER OPTIONS  
Befestigungsmoeglichkeiten der Kapfen



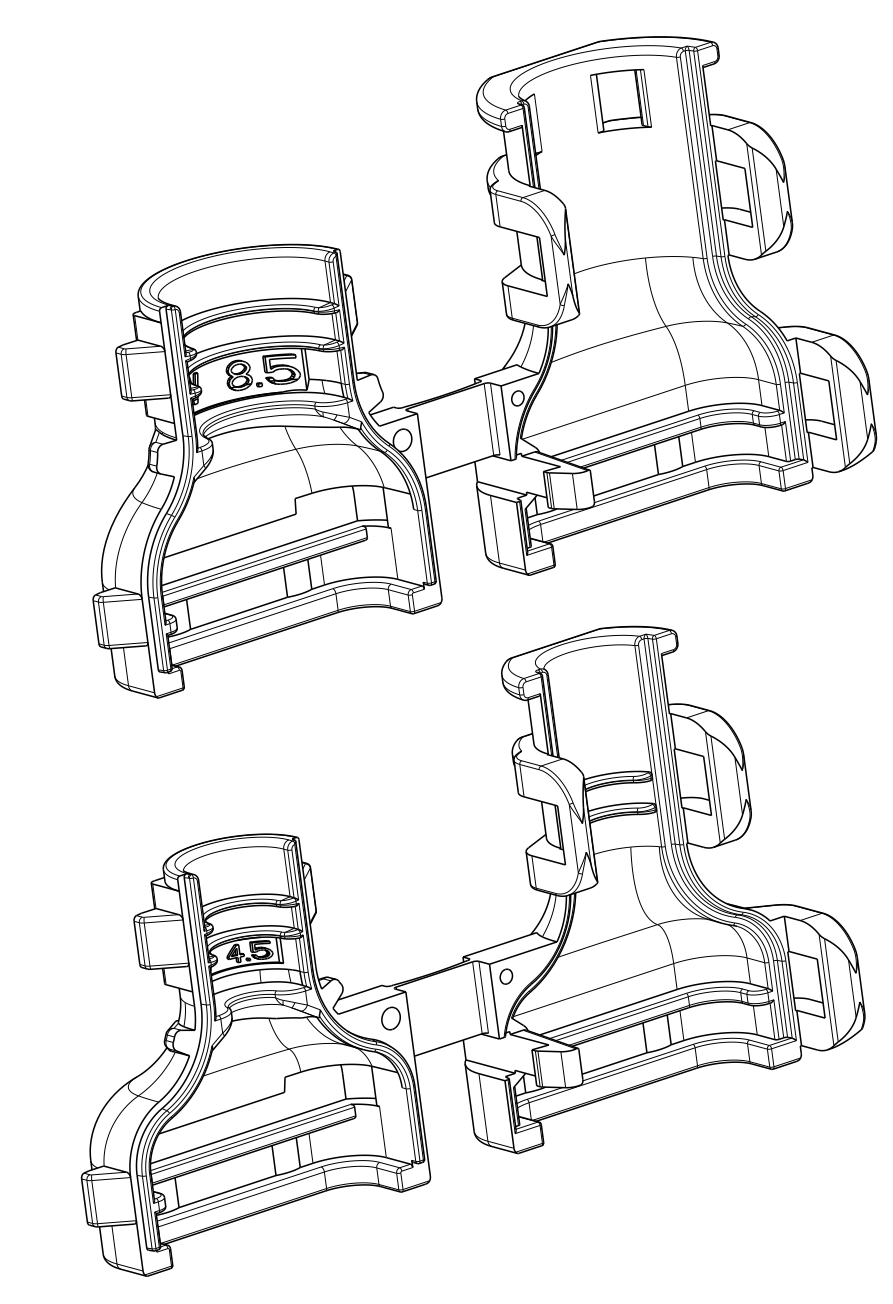
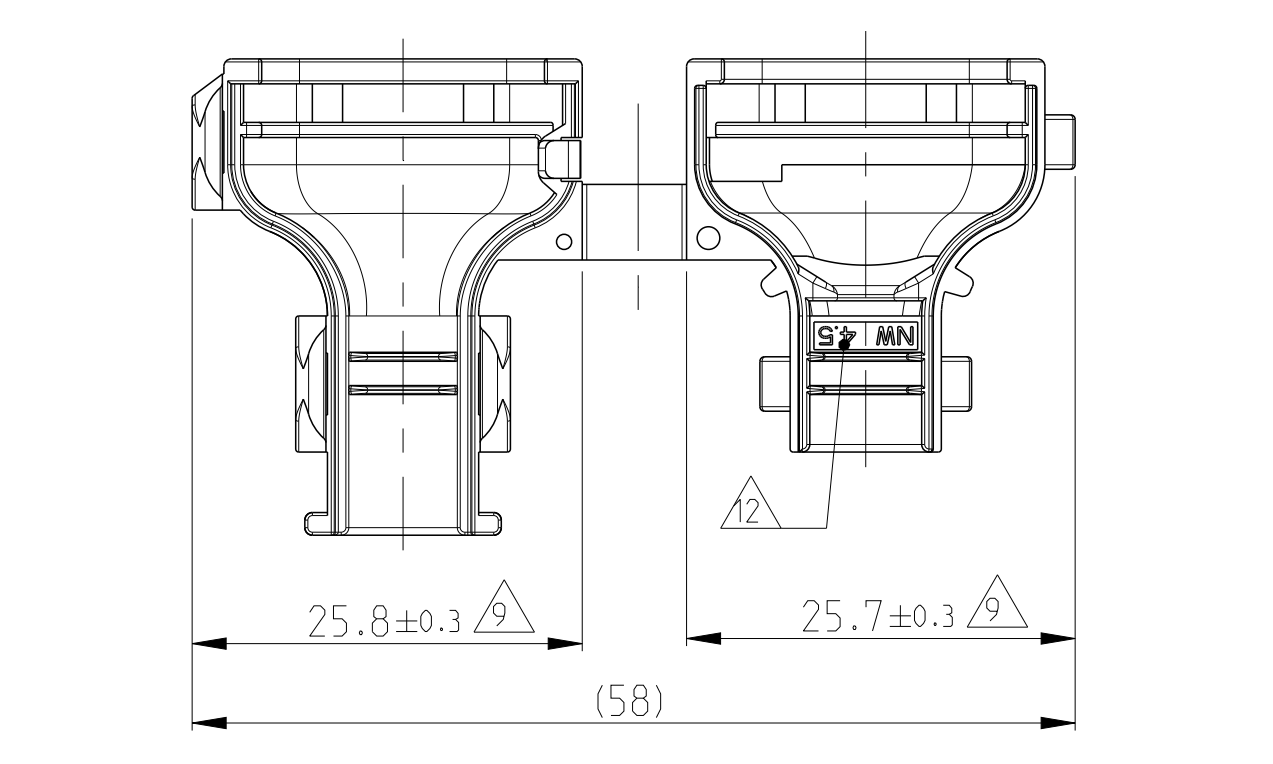
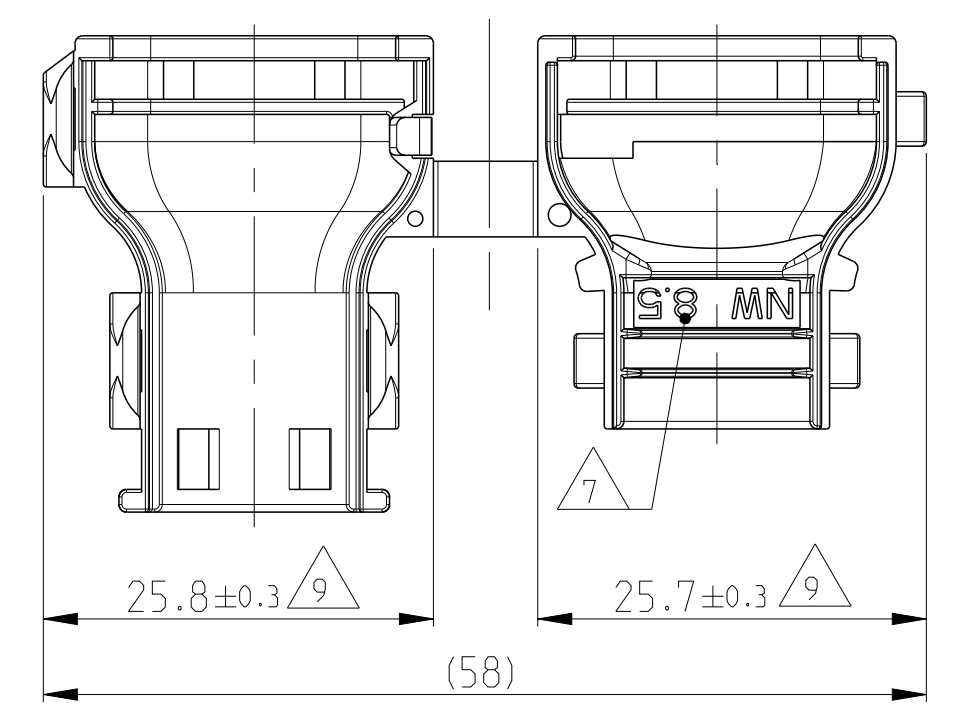
REVISIONS					
P.	LTN	DESCRIPTION	DATE	DMN	APVD
G1		DETAILS SEE PCN E-10-002668	04FEB2010	SJ	JG
H		DETAILS SEE PCN E-12-019940	16NOV2012	CG	JG
H1		DETAILS SEE PCN E-16-011236	15AUG2016	MAH.	GILC
H2		DETAILS SEE PCN E-18-019571	03JAN2019	MAH.	GILC

NOTES  
Bemerkungen

- 1 TE LOGO  
TE Logo
- 2 TE ORDER-NO.  
TE Bestell-Nr.
- 3 PRODUCTION DATE  
Produktionsdatum
- 4 LETTER-INSERT FOR THE REVISION STATUS OF THE MOULD  
Schriftsatz fuer Aenderungszustand des Werkzeuges  
ACTUAL STATUS: SEE TABLE  
Aktueller Stand: siehe Tabelle
- 5 MATERIAL MARKING ACCORDING TO VDA 260  
Werkstoffkennzeichnung nach VDA 260
- 6 BULK PACKAGING IN CORRUGATED BOX  
Schuettgut im Versandkarton
- 7 CABLE EXIT DESIGNED FOR CORRUGATED TUBE NW 8.5  
Kabelabgang ausgelegt fuer Wellrohr NW 8.5
- 8 MALFUNCTION CAUSED BY LAQUER IS NOT COVERED  
BY TE WARRANTY  
Funktionsbeeintraechtigung durch Lackieren liegt nicht  
im Einfluss und Gewaehrleistungsumfang von TE
- 9 WARPAGE UP TO -1.0mm FROM NOM. DIMENSION PERMITTED  
Verzug zulaessig bis -1.0mm vom Nennmass
- 10 MAX. CABLE TIE WIDTH: 3.8mm  
max. Kabelbinderbreite: 3.8mm
- 11 SUITABLE FOR TAB AND RECEPTACLE HOUSING GROUP A  
SEE PRODUCT GROUP DRAWING 1563709  
Passend fuer Flachstecker- und Buchsengehaeuse der Gruppe A  
siehe Produktgruppenzeichnung 1563709



TE LOGO RELATED TO MOLDING TOOL  
TE Logo abhaengig von Spritzgusswerkzeug



- H2 12 CABLE EXIT DESIGNED FOR CORRUGATED TUBE NW 4.5  
SCHLEMMER ORDER NO. 1200068  
Kabelabgang ausgelegt fuer Wellrohr NW 4.5  
Schlemmer Bestell-Nr. 1200068

TOLERANCES UNLESS OTHERWISE SPECIFIED ACC. TO DIN 16901-140 CENTRIC TO NOMINAL DIMENSION. EDITION 1992-11 SHALL APPLY. Freimassstoleranzen nach DIN 16901-140. Es gilt die Ausgabe 1992-11.	
DIESE ZEICHNUNG IST EIN KONTROLLIERTES DOKUMENT. BEMASSUNGEN UND TOLERANZEN GEMAESS GPS (ISO STANDARDS).	
THIS DRAWING IS A CONTROLLED DOCUMENT. DIMENSIONING AND TOLERANCING PER GPS (ISO STANDARDS).	
DIMENSIONS: mm	TOLERANCES UNLESS OTHERWISE SPECIFIED: ISO 8015
MATERIAL PA66/6 (V-0)	FINISH BLACK schwarz
WEIGHT 3.1g	CUSTOMER DRAWING

H2	ITEM	REV.	DESCRIPTION Beschreibung
	0-1670365-2	H	COVER, 180° Kappe, 180°
	0-1670365-1	H	COVER, 180° Kappe, 180°
	TE ORDER-NO. TE Bestell-Nr.	REV.	DESCRIPTION Beschreibung

TE Connectivity	
NAME	COVER 180 Kappe 180 Grad HDSCS - GROUP A
SIZE	116-18756
WEIGHT	3.1g
CAGE CODE	116-18756
DRAWING NO	00779
SCALE	5:1
SHEET	1 OF 1
REV.	H2