

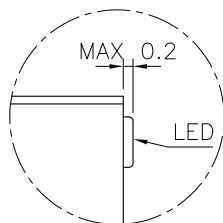
THIS DRAWING IS UNPUBLISHED.

RELEASED FOR PUBLICATION

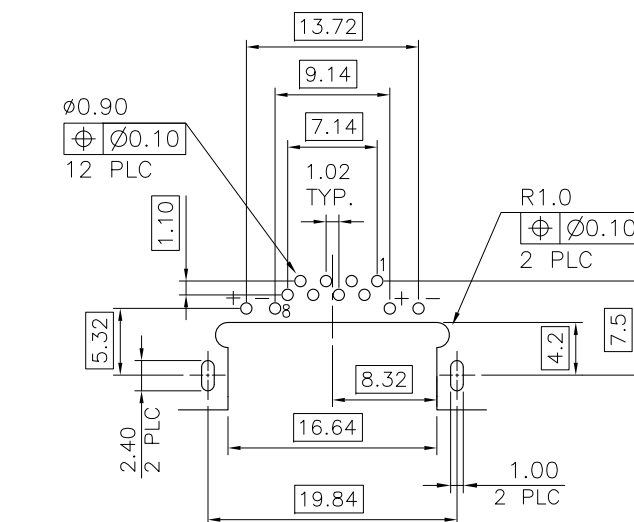
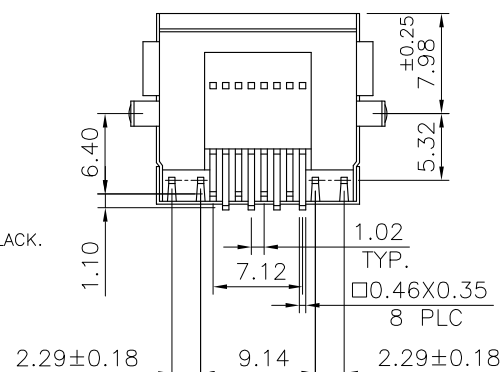
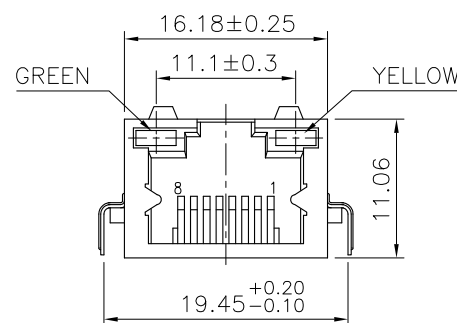
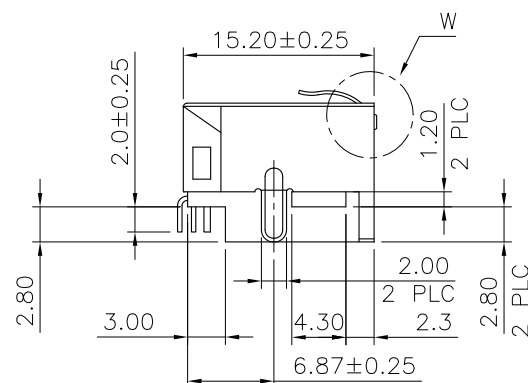
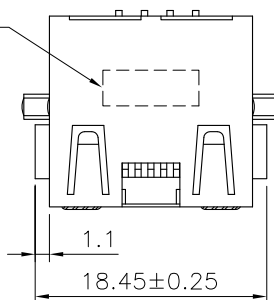
ALL RIGHTS RESERVED.

© COPYRIGHT 2013 BY TE CONNECTIVITY.

LOC	DIST	REVISIONS			DATE	DWN	APVD
DW	—	P	LTR	DESCRIPTION			
		A2		ECR-12-012115	23OCT12	EL	WK

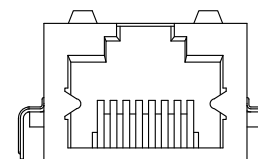


DETAIL W

TE LOGO &
DATE CODE

RECOMMENDED PCB LAYOUT (THICKNESS: 1.6mm)

(DIMENSION TOLERANCE: 1 PLC: ±0.1 2PLC: ±0.05)



W/O LED LIGHT

NOTE:

- MATERIAL:
HOUSING: THERMOPLASTIC HIGH TEMP., UL94 V-0, COLOR: BLACK.
CONTACT: PHOSPHOR BRONZE, THICKNESS: 0.35mm.
SHELL: BRASS, THICKNESS: 0.20mm.
LED LIGHT: EPOXY RESIN, THICKNESS: 0.50mm.
- FINISH:
CONTACT: GOLD PLATED (SEE TABLE) IN CONTACT AREA,
GOLD FLASH ON SOLDER TAILS,
50u" MIN. NICKEL UNDER PLATED ALL OVER.
SHELL: 20u" MIN. NICKEL PLATED.
LED LIGHT: 65u" MIN Ag PLATED
85u" MIN TIN PLATED.
- LED MUST BE REFLOW COMPATIBLE TO FOLLOWING
TEMPERATURE PROFILE (FOR 1 CYCLE): ABOVE 160°C FOR
120 SECONDS, PEAKING AT 245°C FOR 20~40 SECONDS.
- LED DEFECT RATE IS 6000 PPM MAX. AFTER IR REFLOW
PROCESS AS NOTE 3.
- WAVE SOLDER CAPABLE TO 265°C PER 109-202, CONDITION B.

△ OBSOLETE PARTS: OBSOLETE CIS STREAMLINING PER D.RENAUD/D.SINISI

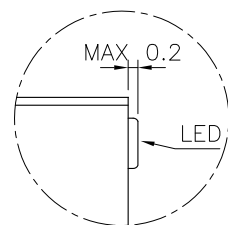
OBSOLETE	REEL	W/O	50μ"	3-1734719-8
			30μ"	3-1734719-7
			15μ"	3-1734719-6
			6μ"	3-1734719-5
		W/	50μ"	3-1734719-4
			30μ"	3-1734719-3
			15μ"	3-1734719-2
			6μ"	3-1734719-1
<div><div>△</div><div>OBSOLETE</div></div>	TRAY	W/O	50μ"	1734719-8
			30μ"	1734719-7
			15μ"	1734719-6
			6μ"	1734719-5
		W/	50μ"	1734719-4
			30μ"	1734719-3
			15μ"	1734719-2
			6μ"	1734719-1
<div><div>△</div><div>OBSOLETE</div></div>	PACKAGE	LED LIGHT	MIN. GOLD THICKNESS	PART NUMBER

THIS DRAWING IS A CONTROLLED DOCUMENT.

DIMENSIONS: MM		TOLERANCES UNLESS OTHERWISE SPECIFIED:	
		0 PLC	± 0.5
		1 PLC	± 0.3
		2 PLC	± 0.2
		3 PLC	± 0.1
		4 PLC	± 0.1
MATERIAL		FINISH	
SEE NOTE		SEE NOTE	

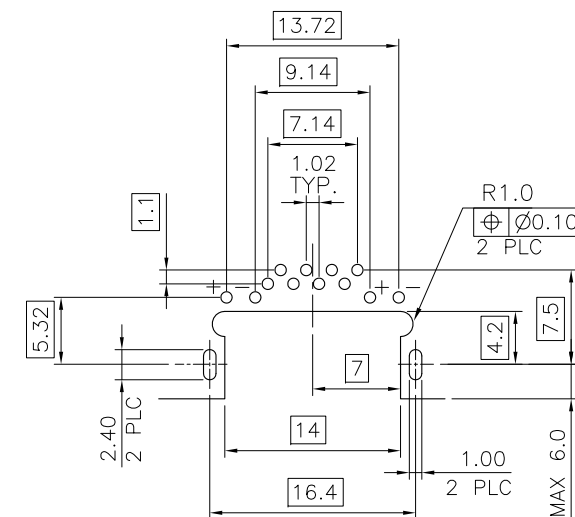
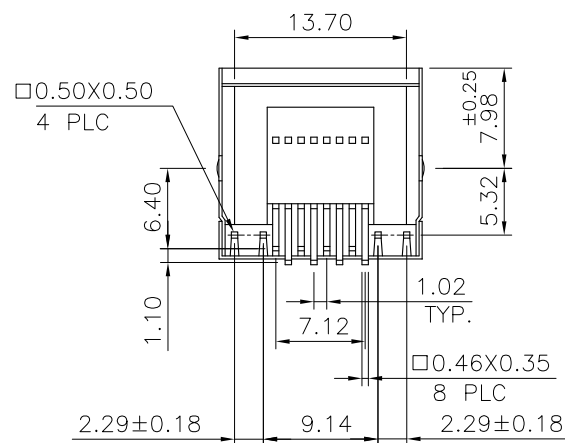
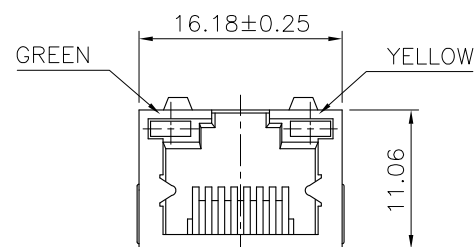
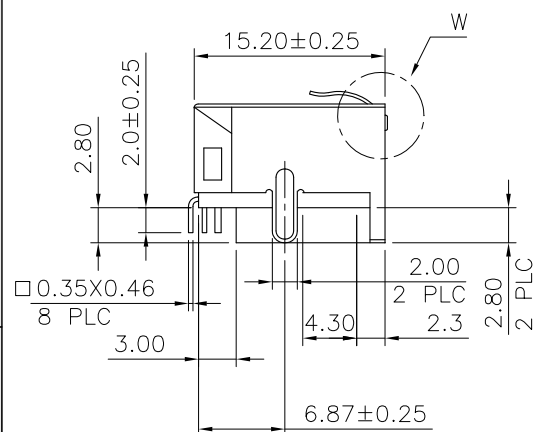
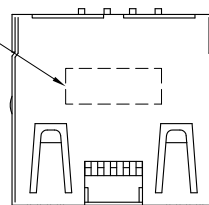
DWN	O. HU	13DEC2005
CHK	S. HOU	13DEC2005
APVD	W.J. KE	13DEC2005
PRODUCT SPEC		
108-57535		
APPLICATION SPEC		
—		
WEIGHT	3 GRAMS	
CUSTOMER DRAWING		

NAME			
MODULAR JACK, RJ45, SINGLE ENTRY, DIP TYPE			
SIZE	CAGE CODE	DRAWING NO	RESTRICTED TO
A3	00779	C-1734719	—
SCALE			SHEET
—			1 OF 4
REV			A2

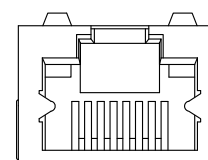


DETAIL W

TE LOGO &
DATE CODE





RECOMMENDED PCB LAYOUT (THICKNESS: 1.6mm)
(DIMENSION TOLERANCE: 1 PLC: ±0.1 2PLC: ±0.05)



W/O LED LIGHT

NOTE:

- MATERIAL:
HOUSING: THERMOPLASTIC HIGH TEMP., UL94V-0, COLOR: BLACK.
CONTACT: PHOSPHOR BRONZE, THICKNESS: 0.35mm.
SHELL: BRASS, THICKNESS: 0.20mm.
- FINISH:
CONTACT: GOLD PLATED (SEE TABLE) IN CONTACT AREA,
GOLD FLASH ON SOLDER TAILS,
50u" MIN. NICKEL UNDER PLATED ALL OVER.
SHELL: 20u" MIN. NICKEL PLATED.
- WAVE SOLDER CAPABLE TO 265°C PER TYCO SPEC 109-202,
CONDITION B.

THIS DRAWING IS A CONTROLLED DOCUMENT.		DWN —		 TE Connectivity		THICKNESS	
		CHK —					
		APVD —		NAME			
DIMENSIONS: MM		TOLERANCES UNLESS OTHERWISE SPECIFIED:		MODULAR JACK, RJ45, SINGLE ENTRY, DIP TYPE			
		0 PLC ± 0.5 1 PLC ± 0.3 2 PLC ± 0.2 3 PLC ± 0.1 4 PLC ± — ANGLES ± 3°		PRODUCT SPEC —		SIZE	
				APPLICATION SPEC —		CAGE CODE	
MATERIAL		FINISH		WEIGHT —		DRAWING NO	
SEE NOTE		SEE NOTE		A3		00779	
				CUSTOMER DRAWING		C=1734719	
				SCALE —		SHEET 2 OF 4	
						REV A2	



TE Connectivity

MODULAR JACK, RJ45, SINGLE
ENTRY, DIP TYPE

SIZE CAGE CODE DRAWING NO RESTRICTED TO

A3 00779 C=1734719

CUSTOMER DRAWING SCALE — SHEET 2 OF 4 REV A2

THIS DRAWING IS UNPUBLISHED.

RELEASED FOR PUBLICATION

-,-



COPYRIGHT 2013

BY TE CONNECTIVITY.

ALL RIGHTS RESERVED.

LOC

DIST

REVISIONS

DW

—

P

LTR

DESCRIPTION

DATE

DWN

APVD

SEE SHEET 1

TOP TRAY

CLAPBOARD

INNER BOX

BOX

370mm(L)X255mm(W)X220mm(H)
11 TRAY/CARTON
TOTAL: 880 PCS
GROSS WEIGHT: 5Kg Ref.

TRAY

330mm(L)X225mm(W)X15mm(H)
80 PCS/TRAY

H

W

L

W

L

H

THIS DRAWING IS A CONTROLLED DOCUMENT.

DWN

—

CHK

—

APVD

—

PRODUCT SPEC

—

APPLICATION SPEC

—

WEIGHT

—

NAME

TE

TE Connectivity

MODULAR JACK, RJ45, SINGLE
ENTRY, DIP TYPE

SIZE

CAGE CODE

DRAWING NO

RESTRICTED TO

A3

00779

C=1734719

—

CUSTOMER DRAWING

SCALE

—

SHEET

3 of 4

REV

A2

THIS DRAWING IS UNPUBLISHED.

RELEASED FOR PUBLICATION

ALL RIGHTS RESERVED.

© COPYRIGHT 2013 BY TE CONNECTIVITY.

LOC
DWDIST
—

REVISIONS

P

LTR

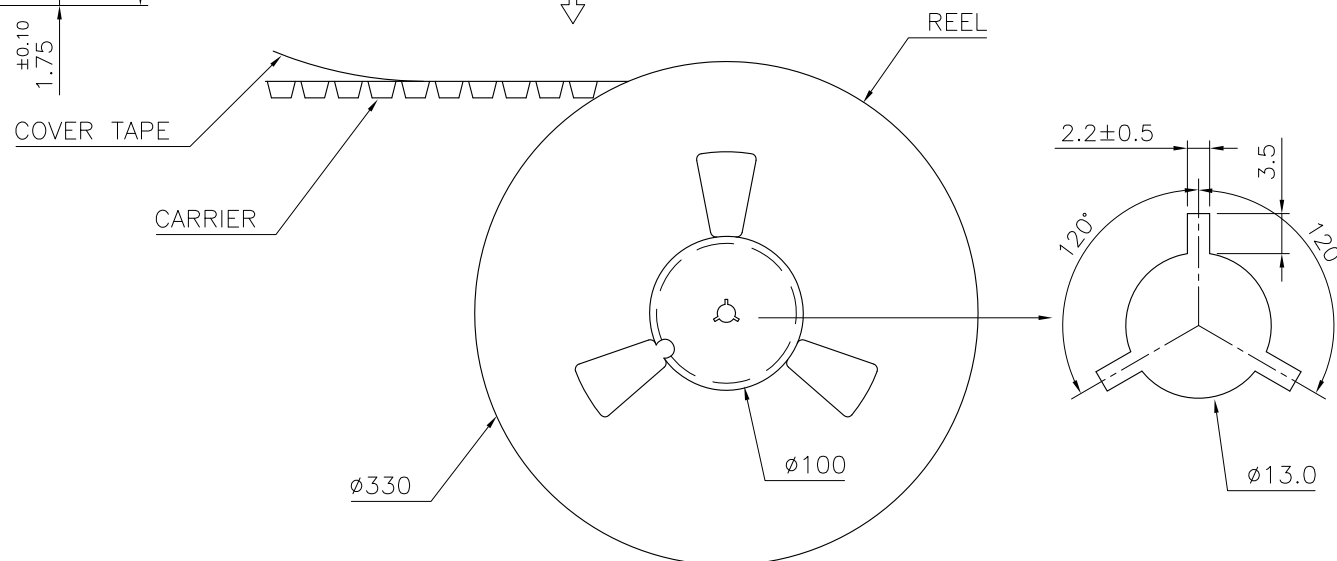
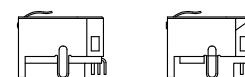
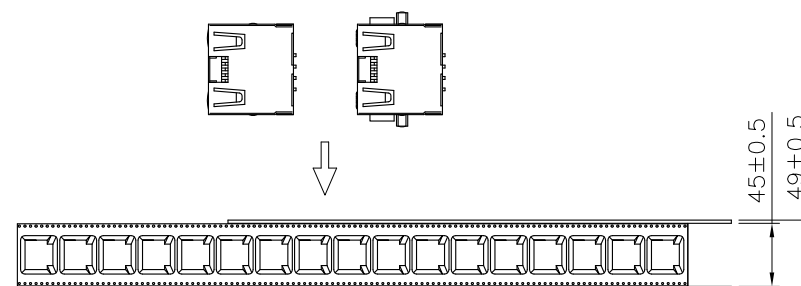
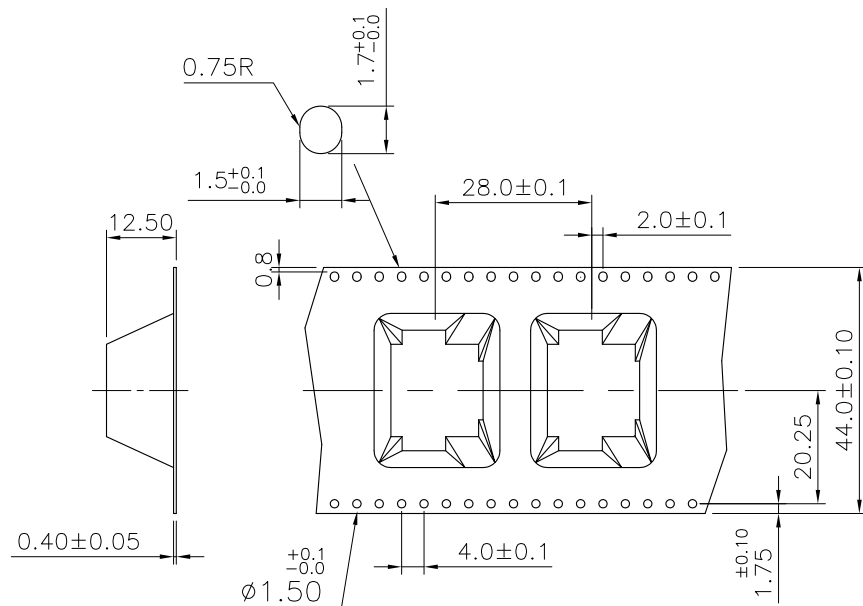
DESCRIPTION

DATE

DWN

APVD

SEE SHEET 1



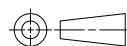
NOTES:

- THE DIRECTION OF JACKS PUT INTO CARRIER.
- 10 EMPTY CAVITIES FOR BOTH OF TOP AND BOTTOM OF THE CARRIER.
- 200 PCS PRODUCTS BE PACKAGED ONE REEL.
- BOX SIZE: 345(L)X345(W)X315(H)
6 REEL/BOX
TOTAL: 1200 PCS

THIS DRAWING IS A CONTROLLED DOCUMENT.

DIMENSIONS:

MM



TOLERANCES UNLESS OTHERWISE SPECIFIED:

0 PLC ±
1 PLC ±
2 PLC ±
3 PLC ±
4 PLC ±
ANGLES ±

MATERIAL

FINISH

DWN

CHK

APVD

PRODUCT SPEC

APPLICATION SPEC

WEIGHT

CUSTOMER DRAWING

NAME

SIZE

A3

CAGE CODE

00779

DRAWING NO

C=1734719

RESTRICTED TO

—

SCALE

—

SHEET

4 of 4

REV

A2

TE

TE Connectivity

MODULAR JACK, RJ45, SINGLE ENTRY, DIP TYPE

Mouser Electronics

Authorized Distributor

Click to View Pricing, Inventory, Delivery & Lifecycle Information:

[TE Connectivity:](#)

[1734719-1](#)