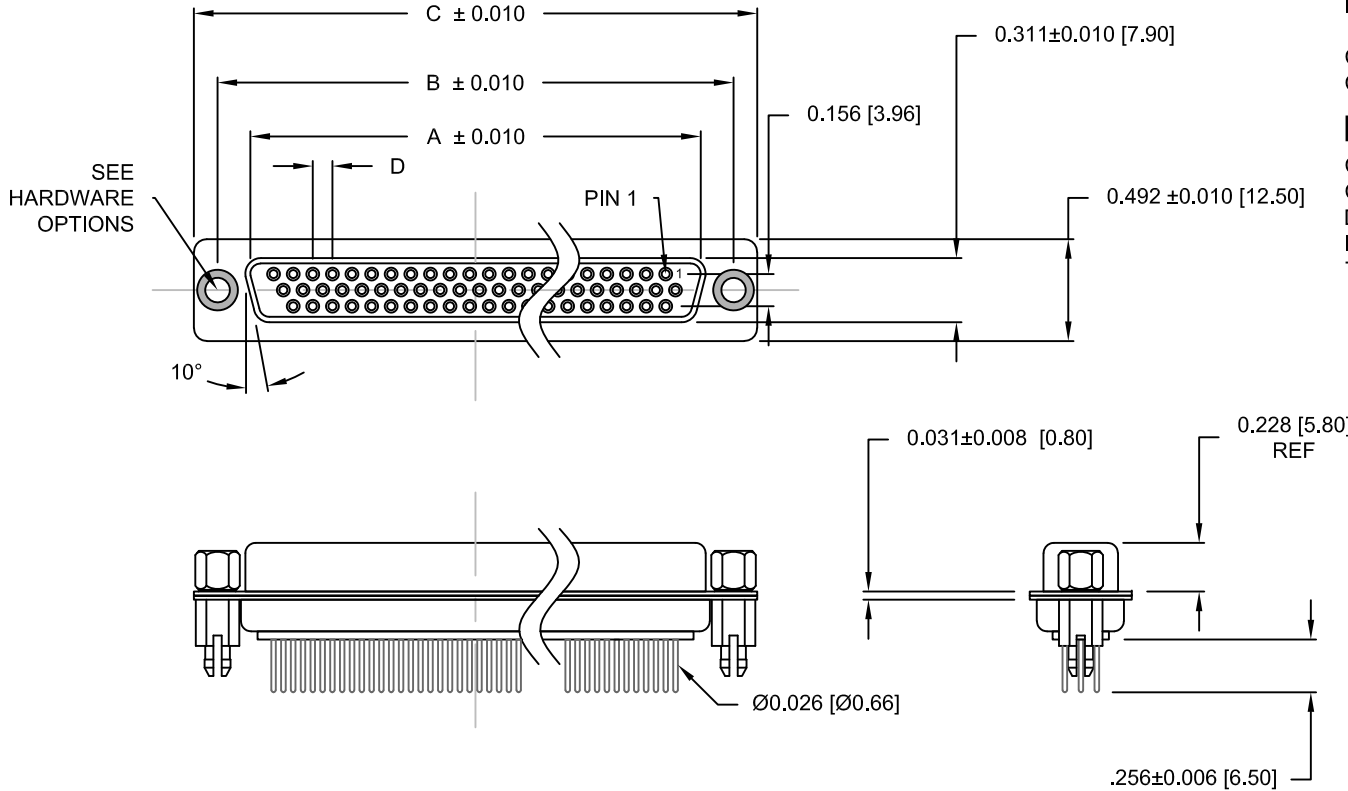


DESCRIPTION: HIGH DENSITY - MACHINED CONTACTS - VERTICAL



**MATERIALS AND FINISH:**

SHELL: STEEL MATERIAL, NICKEL FINISH  
 INSULATOR: (SEE CHART) = 260°C, UL 94V-0 RATED, BLACK  
 CONTACT MATERIAL: COPPER ALLOY  
 CONTACT FINISH: SELECT GOLD PLATING

**ELECTRICAL:**

CONTACT CURRENT RATING: 3 AMPS  
 CONTACT RESISTANCE: 10 Milliohms Max.  
 DIELECTRIC WITHSTANDING VOLTAGE: 1,000VAC Min.  
 INSULATION RESISTANCE: 5 GOHMS Min.  
 TEMPERATURE RATING: -55° ~ +125° C

**180-MYY-21YRYYY**

SERIES \_\_\_\_\_  
 MACHINED CONTACTS \_\_\_\_\_  
 POSITIONS \_\_\_\_\_  
 015 \_\_\_\_\_  
 026 \_\_\_\_\_  
 044 \_\_\_\_\_  
 062 \_\_\_\_\_  
 GENDER \_\_\_\_\_  
 2 = FEMALE  
 X = CONTACT LENGTH \_\_\_\_\_  
 1 = 0.256"  
 A = 0.140"  
 SHELL PLATING \_\_\_\_\_  
 3 = NICKEL  
 RoHS COMPLIANT (260°C) \_\_\_\_\_  
 HARDWARE OPTIONS \_\_\_\_\_  
 00 = NO HARDWARE, ∅.120" HOLE  
 01 = .098" CLINCH NUT (BOARD SIDE)  
 02 = .250" CLINCH NUT (BOARD SIDE)  
 03 = .250" CLINCH NUT (MATING SIDE)  
 05 = .224" 4-40 BOARD LOCK  
 08 = .228" BOARD LOCK, BOARD SIDE  
 90 = .224" 4-40 BOARD LOCK FOR 0.093" BOARD MAX.  
 91 = .224" 4-40 SPACER/BOARD LOCK  
 92 = .224" 4-40 SPACER/BOARD LOCK FOR 0.093" BOARD MAX.  
 PLATING OPTIONS \_\_\_\_\_  
 1 = GOLD FLASH, ENTIRE CONTACT  
 2 = 30u" GOLD, ENTIRE CONTACT  
 3 = 50u" GOLD, ENTIRE CONTACT

**DIMENSIONS (IN.)**

No. OF PINS	A	B	C	D	Insulator Material
15	0.642	0.984	1.213	0.090	PA9T
26	0.969	1.311	1.543	0.090	PA9T
44	1.512	1.852	2.089	0.090	PA9T
62	2.157	2.500	2.732	0.095	PA6T

**DIMENSIONS (mm)**

No. OF PINS	A	B	C	D	Insulator Material
15	16.30	25.00	30.80	2.29	PA9T
26	24.60	33.30	39.20	2.29	PA9T
44	38.40	47.05	53.05	2.29	PA9T
62	54.80	63.50	69.40	2.41	PA6T

UNITS = INCHES [mm]

**DO NOT SCALE FROM DRAWING**



THESE DRAWINGS AND SPECIFICATIONS ARE THE PROPERTY OF NorComp AND SHALL NOT BE REPRODUCED, COPIED OR USED AS THE BASIS FOR THE MANUFACTURE OF SALE OF APPARATUS WITHOUT WRITTEN PERMISSION.

DRAWN:	C. SMITH	DATE:	03-16-07
--------	----------	-------	----------

**NorComp**

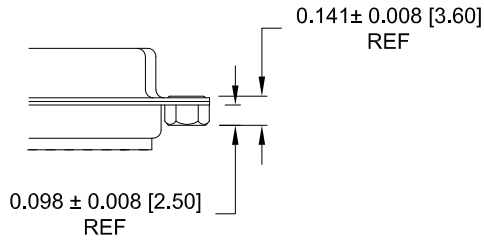
SCALE:	NTS	SHEET	1	OF	3	REV	21
DWG NO.	180-MYY-21YRYYY						

**RoHS COMPLIANT**

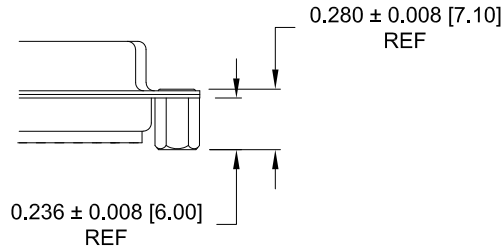
DESCRIPTION: CLINCH NUT HARDWARE

ALL CLINCH-NUTS ARE 4-40 INTERNAL THREADS

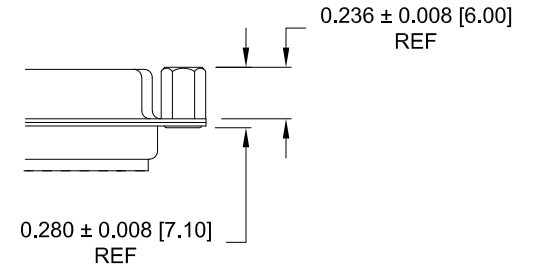
01X ..... 0.098" (BOARD SIDE)



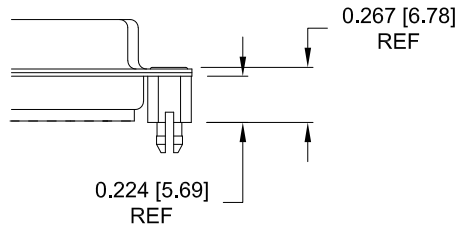
02X ..... 0.250" (BOARD SIDE)



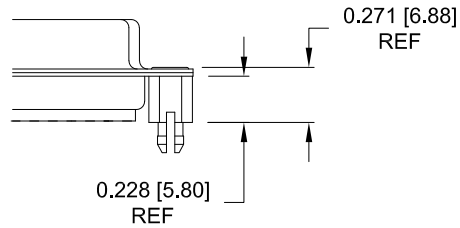
03X..... 0.250" (MATING SIDE)



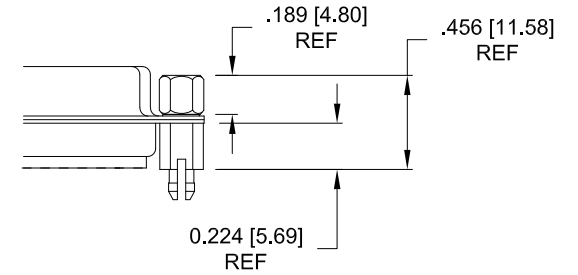
05X ..... 0.224" BOARD SIDE



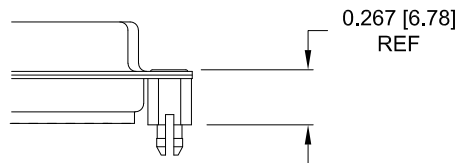
08X ..... 0.228" BOARD SIDE



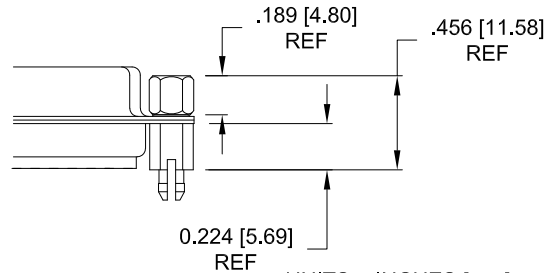
91X ..... 0.224" BOARD SIDE  
0.189 MATING SIDE



90X ..... 0.224" BOARD SIDE



92X ..... 0.224" BOARD SIDE  
0.189 MATING SIDE



NOTE: 4-40 FEMALE SCREW LOCK IS REMOVABLE

NOTE: 90 & 92 OPTION FOR 0.093" MAX. BOARD THICKNESS

UNITS = INCHES [mm]

DO NOT SCALE FROM DRAWING



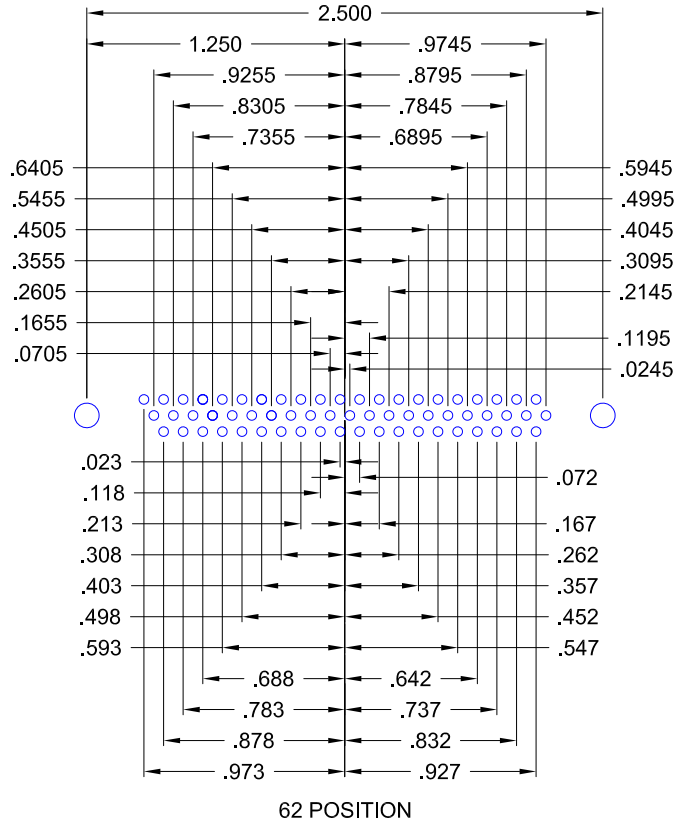
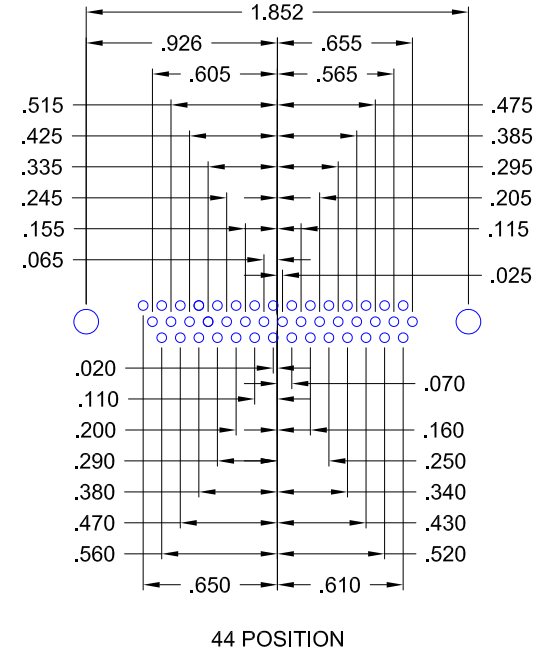
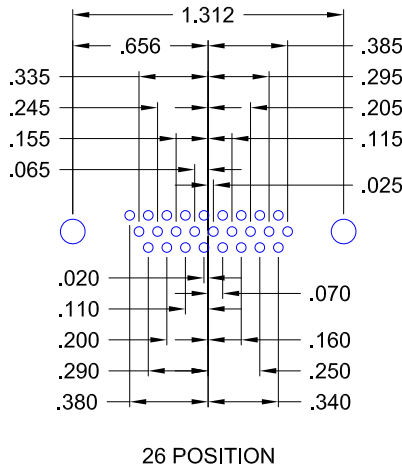
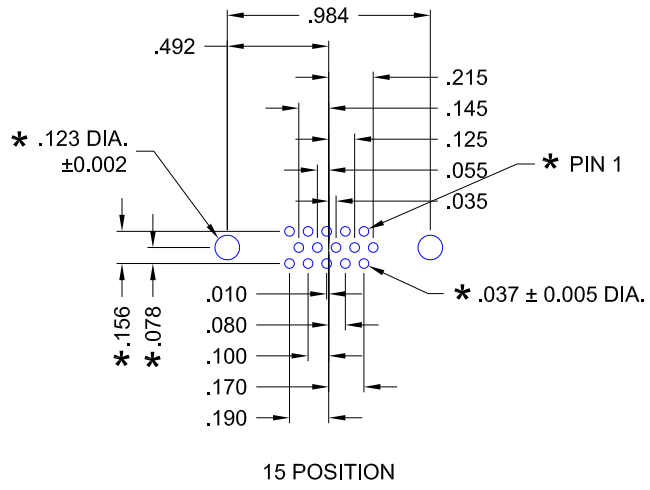
THESE DRAWINGS AND SPECIFICATIONS ARE THE PROPERTY OF NorComp AND SHALL NOT BE REPRODUCED, COPIED OR USED AS THE BASIS FOR THE MANUFACTURE OF SALE OF APPARATUS WITHOUT WRITTEN PERMISSION.

DRAWN: C. SMITH		DATE: 02-12-08	
SCALE:	SHEET 2	OF 3	REV 21
DWG NO. 180-MYY-21YRYYY			

RoHS COMPLIANT

NorComp

DESCRIPTION: HIGH DENSITY - MACHINED CONTACTS - VERTICAL



180 SERIES  
HIGH DENSITY  
VERTICAL

HOLE PATTERN SHOWN  
ARE FOR FEMALE

\* TYP. ON ALL SIZES

UNITS = INCHES [mm]

DO NOT SCALE FROM DRAWING

	THESE DRAWINGS AND SPECIFICATIONS ARE THE PROPERTY OF NorComp AND SHALL NOT BE REPRODUCED, COPIED OR USED AS THE BASIS FOR THE MANUFACTURE OF SALE OF APPARATUS WITHOUT WRITTEN PERMISSION.		DRAWN: C. SMITH	DATE: 03-16-07
	NorComp		SCALE: NTS	SHEET 3 OF 3
DWG NO. 180-MYY-21YRYYY				

# Mouser Electronics

Authorized Distributor

Click to View Pricing, Inventory, Delivery & Lifecycle Information:

## NorComp:

[180-M62-213R911](#) [180-M26-213R021](#) [180-M15-213R011](#) [180-M15-213R001](#) [180-M15-213R911](#) [180-M44-213R911](#) [180-M62-213R021](#) [180-M62-213R031](#) [180-M62-213R011](#) [180-M44-213R031](#) [180-M26-213R011](#) [180-M62-213R001](#) [180-M15-213R031](#) [180-M26-213R031](#) [180-M44-213R011](#) [180-M26-213R911](#) [180-M26-213R001](#) [180-M44-213R001](#) [180-M15-213R021](#) [180-M44-213R021](#) [180-M15-213R051](#) [180-M26-213R051](#) [180-M62-213R051](#) [180-M44-213R051](#)