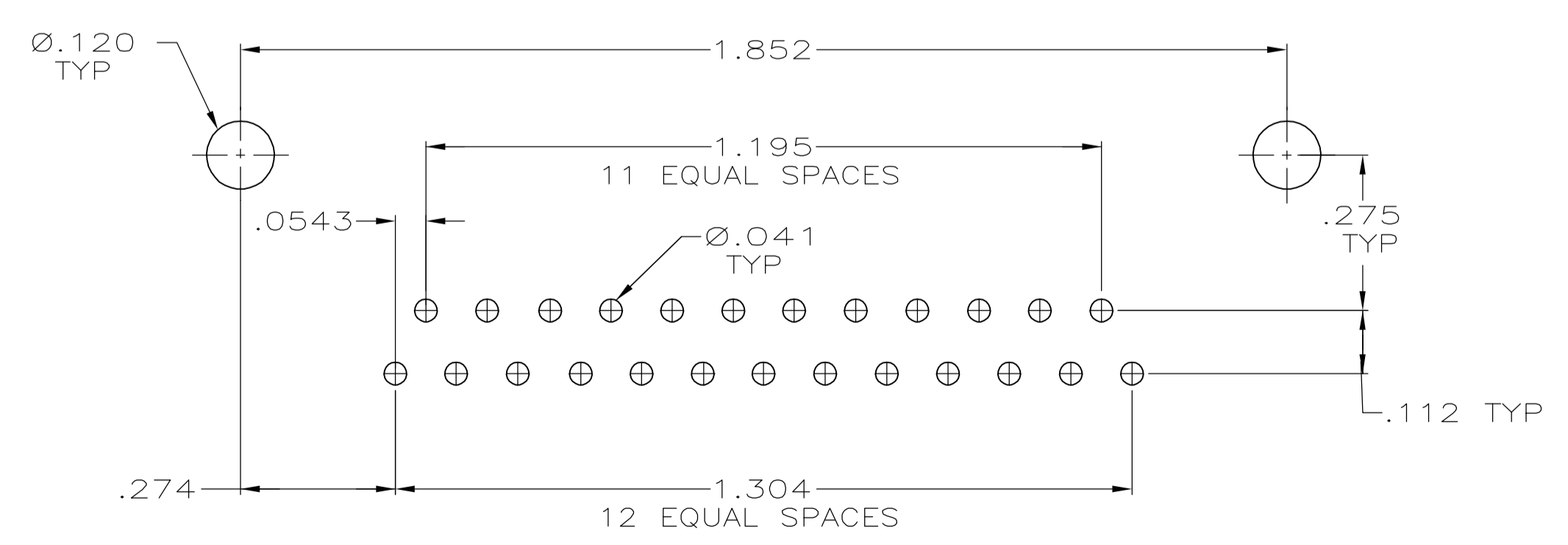
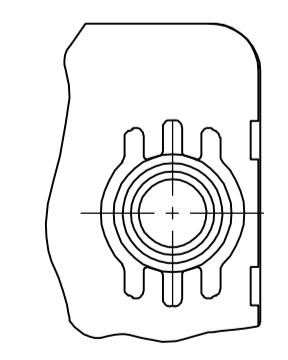


- ① MOLDED PARTS: FLAME RETARDANT 94V-0 RATED THERMOPLASTIC, BLACK.  
SHELL: CARBON STEEL  
CONTACTS: PHOSPHOR BRONZE  
EYELETS: BRASS  
SCREWLOCKS: ZINC  
INSERTS: ZINC
- ② SHELL: .000100 MIN TIN OVER .000050 MIN COPPER.  
CONTACTS: SEE TABLE  
EYELETS: .000100 MIN TIN OVER COPPER FLASH.  
SCREWLOCKS: CLEAR CHROMATE  
INSERTS: CLEAR CHROMATE
- ③ GOLD FLASH FOR A DISTANCE OF .100 MIN FROM MATING END, .000100 MIN TIN ON SOLDER POST, ALL OVER .000050 MIN NICKEL.
- ④ .000030 MIN GOLD FOR A DISTANCE OF .100 MIN FROM MATING END, .000100 MIN TIN ON SOLDER POST, ALL OVER .000050 MIN NICKEL.



RECOMMENDED P.C. BOARD MOUNTING DIMENSIONS



DETAIL M  
FOR -6 ONLY

**COPYRIGHT 2005  
 TYCO ELECTRONICS CORP  
 ALL RIGHTS RESERVED**

FEMALE SCREWLOCKS	④	5745992-6
THREADED INSERTS	③	5745992-3
MOUNTING HARDWARE	CONTACT FINISH	PART NUMBER
THIS DRAWING IS A CONTROLLED DOCUMENT.		
DIMENSIONS: INCHES	TOLERANCES UNLESS OTHERWISE SPECIFIED:	APVD: M. WALMSLEY 04-11-05
0 PLC ± -	1 PLC ± -	NAME: RCPT ASSY, SIZE 3, 25 POSN, RTANG, W/FRONT METAL SHELL, .026 DIA POSTS, AMLPIMITE HD-20 (.590 FOOTPRINT) SHORT LEG
2 PLC ± -	3 PLC ± .005	PRODUCT SPEC: 108-40025
4 PLC ± -	ANGLES ± ± °	APPLICATION SPEC: 114-40010
MATERIAL	FINISH	SIZE: A1
		WEIGHT: -
		CAGE CODE: 00779
		DRAWING NO: 5745992
		RESTRICTED TO: -
CUSTOMER DRAWING	SCALE: 4:1	SHEET: 1 OF 1

# Mouser Electronics

Authorized Distributor

Click to View Pricing, Inventory, Delivery & Lifecycle Information:

[TE Connectivity:](#)

[5745992-3](#)