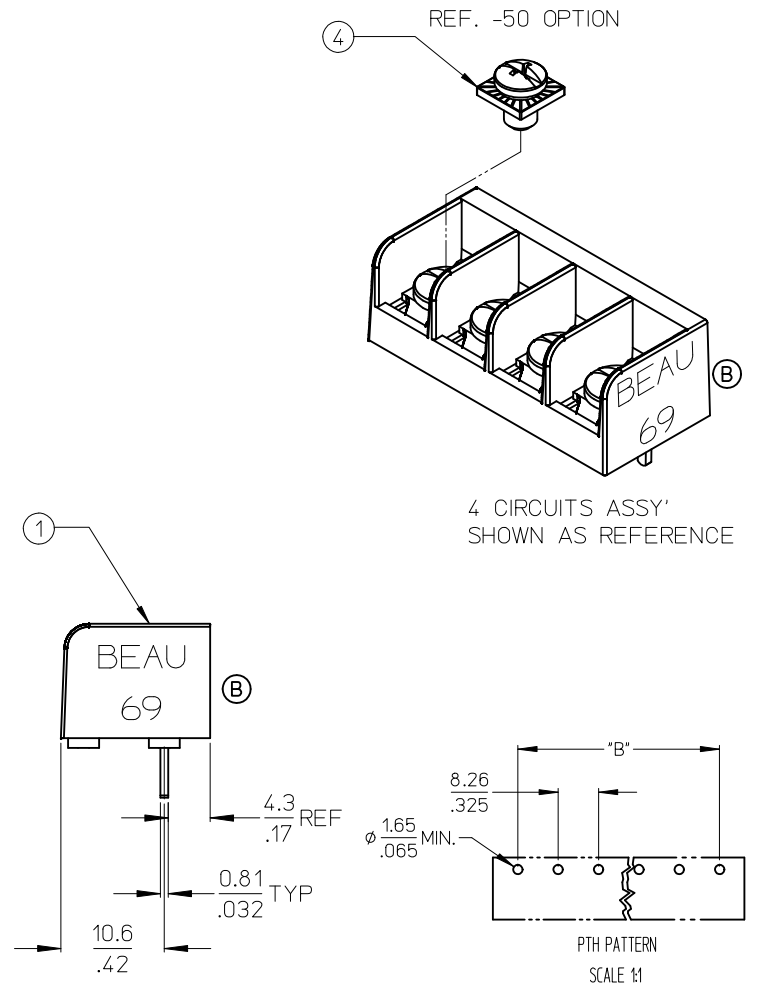
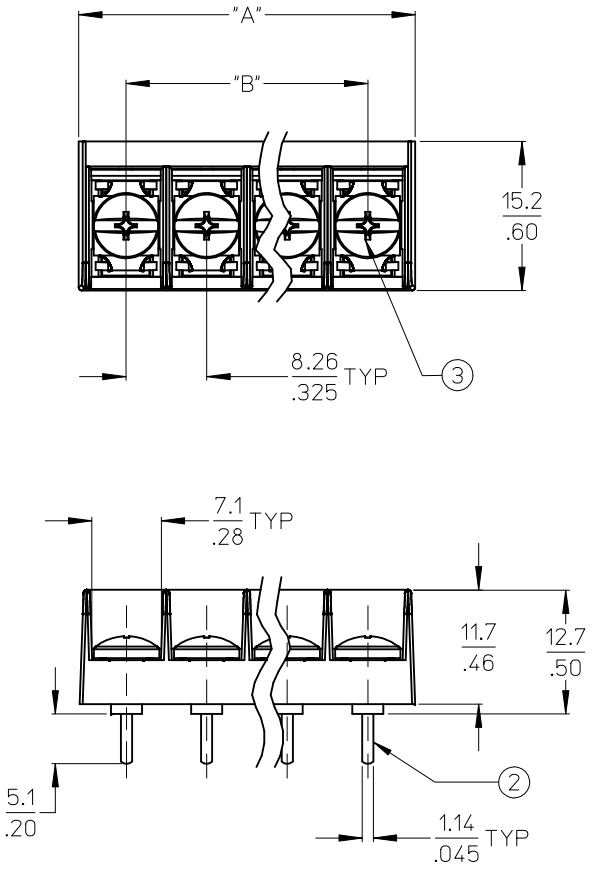


	10		9		8		7	6	5	4	3	2	38690
	NO. OF CIRCUITS		DIM. "A" mm in		DIM. "B" mm in		ASSEMBLY MATERIAL NO. (STANDARD)	ASSEMBLY MATERIAL NO. (-50 OPT)					
F	02	17.9	.71	8.3	.33	386906602	386907802						
	03	26.2	1.03	16.5	.65	386906603	386907803						
	04	34.4	1.36	24.8	.98	386906604	386907804						
	05	42.7	1.68	33.0	1.30	386906605	386907805						
	06	50.9	2.01	41.3	1.63	386906606	386907806						
	07	59.2	2.33	49.5	1.95	386906607	386907807						
E	08	67.4	2.66	57.8	2.28	386906608	386907808						
	09	75.7	2.98	66.0	2.60	386906609	386907809						
	10	83.9	3.31	74.3	2.93	386906610	386907810						
	11	92.2	3.63	82.6	3.25	386906611	386907811						
	12	100.5	3.96	90.8	3.58	386906612	386907812						
	13	108.7	4.28	99.1	3.90	386906613	386907813						
D	14	117.0	4.61	107.3	4.23	386906614	386907814						
	15	125.2	4.93	115.6	4.55	386906615	386907815						
	16	133.5	5.26	123.8	4.88	386906616	386907816						
	17	141.7	5.58	132.1	5.20	386906617	386907817						
	18	150.0	5.91	140.3	5.53	386906618	386907818						
	19	158.2	6.23	148.6	5.85	386906619	386907819						
C	20	166.5	6.56	156.8	6.18	386906620	386907820						
	21	174.8	6.88	165.1	6.50	386906621	386907821						
	22	183.0	7.21	173.4	6.83	386906622	386907822						
	23	191.3	7.53	181.6	7.15	386906623	386907823						
	24	199.5	7.86	189.9	7.48	386906624	386907824						
	25	207.8	8.18	198.1	7.80	386906625	386907825						
B	26	216.0	8.51	206.4	8.13	386906626	386907826						
	27	224.3	8.83	214.6	8.45	386906627	386907827						
	28	232.5	9.16	222.9	8.78	386906628	386907828						
	29	240.8	9.48	231.1	9.10	386906629	386907829						
	30	249.0	9.81	239.4	9.43	386906630	386907830						
	31	257.3	10.13	247.7	9.75	386906631	386907831						
A	32	265.6	10.46	255.9	10.08	386906632	386907832						



NOTES:  
1. MATERIAL: SEE TABLE  
2. FINISHES: SEE TABLE.  
3. "XX" REFERS TO THE QUANTITY OF CIRCUITS.  
4. ROHS COMPLIANT.

4	XX	SCREW #6-32X.155 PAN PHSLZN/BR/STEEL -50 OPT	STEEL	ZN, CLEAR CHROMATE
3	XX	SCREW #6-32X.160 PAN PHSLN/BRASS (STANDARD)	BRASS	NICKEL PLATE
2	XX	TERMINAL, PC	BRASS	TIN PLATE
1	1	INSULATOR	POLYESTER (PBT)	BLACK
ITEM	QTY.	DESCRIPTION	MATERIAL	FINISH

REMOVE "USA"  
EC NO: IPG2012-0967  
DRAWN: ENCINAS 2012/05/22  
CHKD: JMACNEIL 2012/05/31  
APPR: JMACNEIL 2012/06/01

DESCRIPTION  
REV

QUALITY SYMBOLS  
▽=0  
▽=0

GENERAL TOLERANCES (UNLESS SPECIFIED)  
mm INCH  
4 PLACES ± --- ± ---  
3 PLACES ± --- ± .005  
2 PLACES ± 0.13 ± .01  
1 PLACE ± 0.3 ± ---  
ANGULAR ± 2 °  
DRAFT WHERE APPLICABLE  
MUST REMAIN  
WITHIN DIMENSIONS

DIMENSION STYLE  
MM/IN  
DRAWN BY  
DATE  
CHECKED BY  
DATE  
APPROVED BY  
DATE  
MATERIAL NO.  
SIZE  
B

SCALE  
2:1  
DESIGN UNITS  
INCH  
THIRD ANGLE  
PROJECTION  
8.26/.325 SR TRI-BARRIER  
TERMINAL STRIP  
CS, PC ASSY  
MOLEX INCORPORATED  
DOCUMENT NO.  
SD-38690-001  
SHEET NO.  
1 OF 1

THIS DRAWING CONTAINS INFORMATION THAT IS PROPRIETARY TO MOLEX  
INCORPORATED AND SHOULD NOT BE USED WITHOUT WRITTEN PERMISSION

tb\_frame\_B\_P\_ME\_T Rev. E 2006/04/15

# Mouser Electronics

Authorized Distributor

Click to View Pricing, Inventory, Delivery & Lifecycle Information:

Molex:

38690-6602