

## Housing - VC-AL-T4-Z-M25/M20-S - 1583746

Please be informed that the data shown in this PDF Document is generated from our Online Catalog. Please find the complete data in the user's documentation. Our General Terms of Use for Downloads are valid (<http://phoenixcontact.com/download>)



Aluminum die-cast sleeve housing, with grommet, locking screws with cylinder head, for two metric cable glands M25 and M20, angled cable outlet, type VC4

### Product Features

- Housing with two cable entries for M20 and M25 screw connections.
- Angled cable outlet so the cable can be routed as desired, from the side and straight
- Aluminum housing with extended cabling space for high-position and power contact inserts



### Key Commercial Data

Packing unit	1 pc
Weight per Piece (excluding packing)	298.65 g
Custom tariff number	85369010
Country of origin	Poland

### Technical data

#### Dimensions

Height	90 mm
--------	-------

#### Ambient conditions

Ambient temperature (operation)	-40 °C ... 125 °C
---------------------------------	-------------------

#### General

Note	When using fiber optics, the bending radii of the cable manufacturers must be observed.
Size	VC4
Color	gray aluminum
Locking type	Screw locking, cylinder head
Fixing screws	M4
No. of cable outlets	2

## Housing - VC-AL-T4-Z-M25/M20-S - 1583746

### Technical data

#### General

Cable exit	Angled
Screw connection	none
Type of the screw connection	M25/M20 x 1.5
Housing material	Aluminum die-cast
Seal material	NBR, conductive
Material of locking screw	V2A
Flammability rating according to UL 94	V0

#### Standards and Regulations

Flammability rating according to UL 94	V0
--	----

### Classifications

#### eCl@ss

eCl@ss 4.0	272607xx
eCl@ss 4.1	27260701
eCl@ss 5.0	27143424
eCl@ss 5.1	27143424
eCl@ss 6.0	27371205
eCl@ss 7.0	27371205
eCl@ss 8.0	27440202
eCl@ss 9.0	27440202

#### ETIM

ETIM 3.0	EC000437
ETIM 4.0	EC000437
ETIM 5.0	EC000437

#### UNSPSC

UNSPSC 6.01	31261502
UNSPSC 7.0901	31261502
UNSPSC 11	31261502
UNSPSC 12.01	31261502
UNSPSC 13.2	31261502

### Approvals

#### Approvals

## Housing - VC-AL-T4-Z-M25/M20-S - 1583746

### Approvals

Approvals

EAC / EAC

---

Ex Approvals

---

Approvals submitted

---

### Approval details

EAC

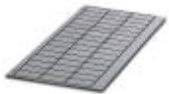
EAC

### Accessories

Accessories

Device marking

Engraving material - GPE 22X22 SR/R - 0806628



Engraving material, Sheet, silver, unlabeled, can be labeled with: Engraving, Plotter, Mounting type: Adhesive, Lettering field: 22 x 22 mm

### Full screw connection

Cable gland - HC-M-KV-M20(9-13) - 1690561



Metal screw connection up to 5 bar, thread length: 6 mm, cable diameter: 9 - 13 mm, WAF 22, screw connection: M20

## Housing - VC-AL-T4-Z-M25/M20-S - 1583746

### Accessories

Cable gland - HC-M-KV-M20(11-16) - 1645998



Metal screw connection up to 5 bar, thread length: 6 mm, cable diameter: 11 - 16 mm, WAF 27, screw connection: M20

---

Cable gland - HC-EMV-KV-M20(7-12,5) - 1690503



EMC screw connection up to 5 bar, thread length: 5 mm, cable diameter: 7.0 - 12.5 mm, WAF 24, screw connection: M20

---

Cable gland - HC-M-KV-M25(11-16) - 1690574



Metal screw connection up to 5 bar, thread length: 7 mm, cable diameter: 11 - 16 mm, WAF 27, screw connection: M25

---

Cable gland - HC-M-KV-M25(14-21) - 1646007



Metal screw connection up to 5 bar, thread length: 7 mm, cable diameter: 14 - 21 mm, WAF 34, screw connection: M25

---

Cable gland - HC-EMV-KV-M25(9-16,5) - 1690516



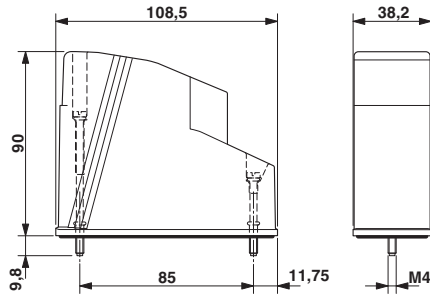
EMC screw connection up to 5 bar, thread length: 7.5 mm, cable diameter: 9.0 - 16.5 mm, WAF 29, screw connection: M25

---

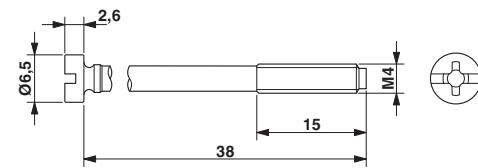
### Drawings

## Housing - VC-AL-T4-Z-M25/M20-S - 1583746

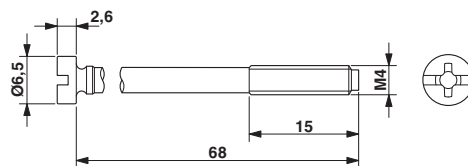
Dimensional drawing



Dimensional drawing



Dimensional drawing



# Mouser Electronics

Authorized Distributor

Click to View Pricing, Inventory, Delivery & Lifecycle Information:

Phoenix Contact:

1583746