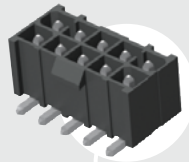
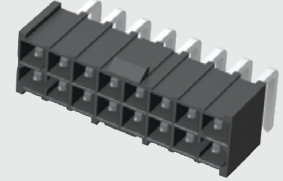


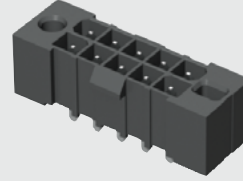
IPBT-105-H2-T-D-K



IPBT-108-H1-T-D-RA-K



IPBT-105-H1-T-D-GP



IPBT SERIES

(4.19 mm) .165"

ISOLATED TERMINAL POWER HEADER

SPECIFICATIONS

For complete specifications see www.samtec.com?IPBT

Insulator Material: Black Liquid Crystal Polymer

Contact Material: High Copper Alloy

Plating: Sn over 50 μm (1.27 μm) Ni

Operating Temp Range: -55 °C to +105 °C

Voltage Rating: 400 VAC/565 VDC

Standard Creepage: (3.66 mm) .144" (-S)

(3.63 mm) .143" (-D)

Standard Clearance: (3.05 mm) .120"

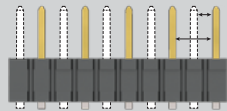
RoHS Compliant: Yes

Lead-Free Solderable: Yes

Board Mates: IPBS

Cable Mates: PMSD, PMSS

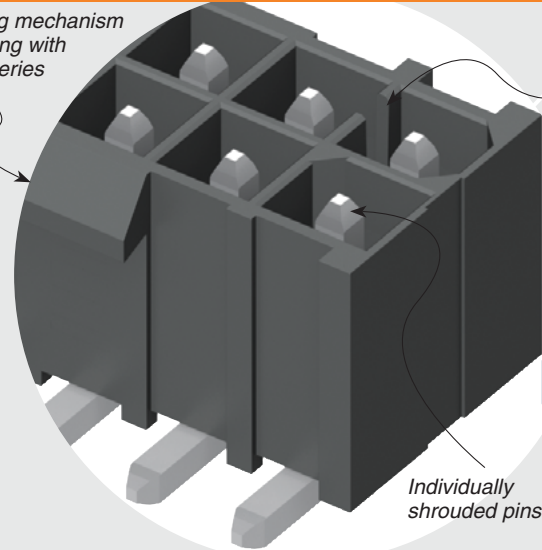
CREEPAGE AND CLEARANCE



Selectively loading contacts achieves customer specific creepage and clearance requirements. Contact asp@samtec.com

Latching mechanism for mating with IPBD Series

Keyed polarization



Individually shrouded pins

RUGGEDIZED BY SAMTEC

- Individually shrouded contacts
- Polarized guide post hole option

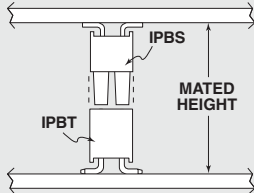
IPBT/IPBS	
PINS POWERED	CURRENT RATING (PER CONTACT)
2	10.3 A
4	8.4 A
6	7.6 A
8	7.1 A
30	6.0 A

RECOGNITIONS

For complete scope of recognitions see www.samtec.com/quality



APPLICATION



IPBT/IPBS LEAD STYLE	MATED HEIGHT*
H1-01	(15.25) .600
-H2-02	(16.84) .663

*Processing conditions will affect mated height.

ALSO AVAILABLE (MOQ Required)

- Other sizes
- Other lead styles

Note: Some lengths, styles and options are non-standard, non-returnable.



02, 03, 04, 05, 08, 10, 15
(-D only)

02, 03, 04, 05, 08, 10
(-S only)
(Standard sizes)

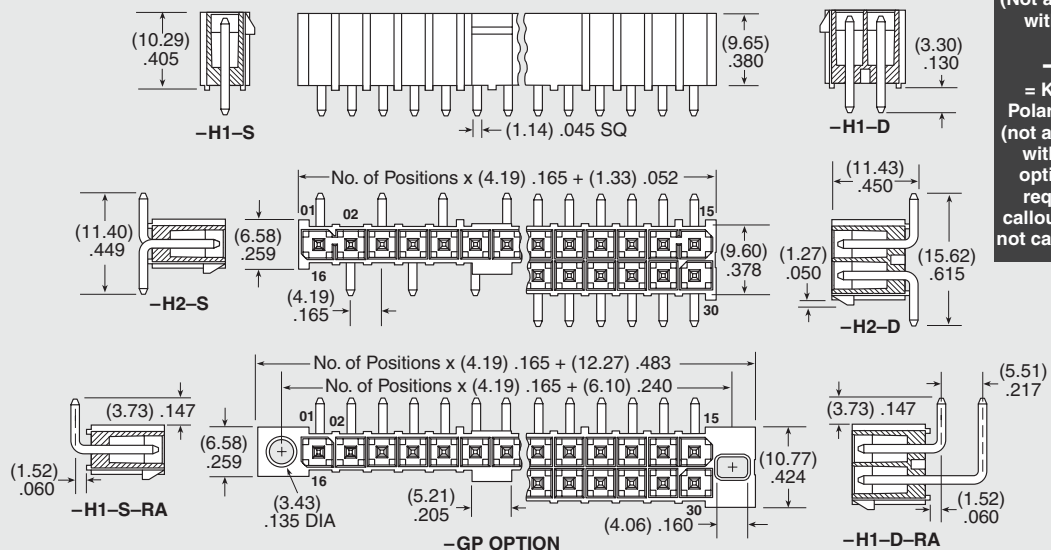
-H1 = Through-hole
-H2 = Surface Mount

-T = Matte Tin

-S = Single Row
-D = Double Row

-RA = Right-angle (Lead Style -H1 only)
-GP = Guide Post Holes (Not available with -K)

-K = Keyed Polarization (not available with -GP option, is required callout if -GP not called out)



Due to technical progress, all designs, specifications and components are subject to change without notice.

Mouser Electronics

Authorized Distributor

Click to View Pricing, Inventory, Delivery & Lifecycle Information:

Samtec:

[IPBT-112-H1-T-D-RA-GP](#) [IPBT-115-H1-T-D-RA-GP](#) [IPBT-104-H2-T-S-K](#) [IPBT-110-H1-T-D-K](#) [IPBT-103-H2-T-D-K](#)
[IPBT-110-H2-T-D-GP](#) [IPBT-103-H2-T-S-K](#) [IPBT-105-H1-T-D-K](#) [IPBT-103-H1-T-D-GP](#) [IPBT-108-H2-T-D-K](#) [IPBT-110-H1-T-D-RA-K](#) [IPBT-105-H1-T-S-K](#) [IPBT-105-H2-T-D-K](#) [IPBT-110-H2-T-D-K](#) [IPBT-115-H1-T-D-RA-K](#) [IPBT-108-H1-T-D-K](#) [IPBT-105-H2-T-D-GP](#) [IPBT-104-H2-T-D-K](#) [IPBT-102-H1-T-D-RA-K](#) [IPBT-103-H1-T-S-RA-GP](#) [IPBT-103-H1-T-D-RA-GP](#) [IPBT-115-H1-T-D-K](#) [IPBT-102-H1-T-D-RA-GP](#) [IPBT-102-H1-T-S-RA-K](#) [IPBT-104-H1-T-S-K](#) [IPBT-105-H1-T-D-GP](#) [IPBT-108-H1-T-S-RA-K](#) [IPBT-105-H1-T-S-RA-K](#) [IPBT-108-H1-T-D-RA-K](#) [IPBT-103-H1-T-S-K](#) [IPBT-110-H1-T-D-RA-GP](#) [IPBT-103-H1-T-S-RA-K](#) [IPBT-103-H1-T-D-RA-K](#) [IPBT-108-H1-T-D-RA-GP](#) [IPBT-105-H1-T-D-RA-K](#) [IPBT-102-H1-T-S-K](#) [IPBT-110-H1-T-D-GP](#) [IPBT-102-H2-T-S-K](#) [IPBT-102-H1-T-D-K](#) [IPBT-103-H1-T-D-K](#) [IPBT-104-H1-T-D-K](#) [IPBT-110-H5-T-D-GP](#) [IPBT-102-H1-T-D-GP](#) [IPBT-104-H1-T-D-RA-GP](#) [IPBT-102-H2-T-D-K](#) [IPBT-104-H1-T-S-RA-K](#) [IPBT-104-H1-T-D-RA-K](#) [IPBT-105-H1-T-D-RA-GP](#) [IPBT-102-H6-T-D-GP](#) [IPBT-102-H2-TM-D-K](#) [IPBT-108-H1-TM-D-RA-K](#) [IPBT-112-H1-T-D-K](#) [IPBT-112-H1-T-D-RA-K](#) [IPBT-102-H2-T-S-GP](#) [IPBT-103-H4-T-D-GP](#) [IPBT-105-H2-TM-D-K](#) [IPBT-107-H1-T-D-GP](#) [IPBT-104-H2-T-D-GP](#) [IPBT-114-H1-T-D-RA-GP](#) [IPBT-114-H1-T-D-GP](#) [IPBT-108-H1-T-D-GP](#) [IPBT-109-H1-T-D-GP](#) [IPBT-115-H1-T-D-GP](#) [IPBT-112-H1-T-D-GP](#) [IPBT-106-H1-T-D-GP](#) [IPBT-115-H2-T-D-GP](#) [IPBT-106-H1-T-D-RA-GP](#) [IPBT-106-H2-T-D-GP](#) [IPBT-109-H2-T-D-GP](#) [IPBT-113-H1-T-D-GP](#) [IPBT-104-H1-TM-D-GP](#) [IPBT-110-H1-TM-D-GP](#) [IPBT-112-H2-TM-D-GP](#) [IPBT-102-H2-T-D-GP](#) [IPBT-104-H1-T-D-GP](#) [IPBT-111-H1-T-D-GP](#) [IPBT-107-H1-T-D-RA-GP](#) [IPBT-107-H2-T-D-GP](#) [IPBT-108-H2-T-D-GP](#) [IPBT-102-H1-TM-D-GP](#) [IPBT-110-H1-TM-D-RA-GP](#) [IPBT-112-H2-T-D-GP](#) [IPBT-113-H1-T-D-RA-GP](#) [IPBT-115-H1-TM-D-GP](#) [IPBT-108-H1-T-S-GP](#) [IPBT-103-H2-TM-D-GP](#) [IPBT-106-H2-TM-D-GP](#) [IPBT-108-H2-TM-D-GP](#) [IPBT-103-H2-T-D-GP](#) [IPBT-109-H1-T-D-RA-GP](#) [IPBT-114-H2-T-D-GP](#) [IPBT-111-H1-T-D-RA-GP](#) [IPBT-111-H2-T-D-GP](#) [IPBT-107-H1-TM-D-GP](#) [IPBT-108-H1-T-S-RA-GP](#) [IPBT-115-H6-T-D-GP](#) [IPBT-106-H1-T-S-RA-GP](#) [IPBT-109-H4-T-D-GP](#) [IPBT-110-H3-T-D-GP](#) [IPBT-104-H1-T-S-RA-GP](#)