

## Base strip - MSTB 2,5/19-G-5,08 - 1759185

Please be informed that the data shown in this PDF Document is generated from our Online Catalog. Please find the complete data in the user's documentation. Our General Terms of Use for Downloads are valid (<http://phoenixcontact.com/download>)


Header, Nominal current: 12 A, Rated voltage (III/2): 320 V, Number of positions: 19, Pitch: 5.08 mm, Color: green, Contact surface: Tin, Mounting: Wave soldering



The figure shows a 10-position version of the product



### Key Commercial Data

|                                      |   |
|--------------------------------------|---|
| Packing unit                         | 1 pc  |
| GTIN                                 | <br>4 017918 030650 |
| Weight per Piece (excluding packing) | 8.14 g  |
| Custom tariff number                 | 85366990  |
| Country of origin                    | Germany   |

### Technical data

#### Dimensions

|                          |          |
|--------------------------|----------|
| Length                   | 12 mm    |
| Pitch                    | 5.08 mm  |
| Dimension a              | 91.44 mm |
| Width                    | 96.52 mm |
| Constructional height    | 8.6 mm   |
| Height                   | 12.1 mm  |
| Length of the solder pin | 3.5 mm   |
| Pin dimensions           | 1 x 1 mm |
| Hole diameter            | 1.4 mm   |

#### General

## Base strip - MSTB 2,5/19-G-5,08 - 1759185

### Technical data

#### General

|  |               |
|--|---------------|
| Range of articles                      | MSTB 2,5/..-G |
| Insulating material group              | IIIa          |
| Rated surge voltage (III/3)            | 4 kV          |
| Rated surge voltage (III/2)            | 4 kV          |
| Rated surge voltage (II/2)             | 4 kV          |
| Rated voltage (III/3)                  | 250 V         |
| Rated voltage (III/2)                  | 320 V         |
| Rated voltage (II/2)                   | 400 V         |
| Connection in acc. with standard       | EN-VDE        |
| Nominal current $I_N$                  | 12 A          |
| Maximum load current                   | 12 A          |
| Insulating material                    | PBT           |
| Flammability rating according to UL 94 | V0            |
| Color                                  | green         |
| Number of positions                    | 19            |

#### Standards and Regulations

|  |        |
|--|--------|
| Connection in acc. with standard       | EN-VDE |
|  | CSA    |
| Flammability rating according to UL 94 | V0     |

### Classifications

#### eCl@ss

|            |          |
|------------|----------|
| eCl@ss 4.0 | 272607xx |
| eCl@ss 4.1 | 27260701 |
| eCl@ss 5.0 | 27260701 |
| eCl@ss 5.1 | 27260701 |
| eCl@ss 6.0 | 27260704 |
| eCl@ss 7.0 | 27440402 |
| eCl@ss 8.0 | 27440402 |
| eCl@ss 9.0 | 27440402 |

#### ETIM

|          |          |
|----------|----------|
| ETIM 3.0 | EC001121 |
| ETIM 4.0 | EC002637 |
| ETIM 5.0 | EC002637 |

## Base strip - MSTB 2,5/19-G-5,08 - 1759185

### Classifications

#### UNSPSC

|               |          |
|---------------|----------|
| UNSPSC 6.01   | 30211810 |
| UNSPSC 7.0901 | 39121409 |
| UNSPSC 11     | 39121409 |
| UNSPSC 12.01  | 39121409 |
| UNSPSC 13.2   | 39121409 |

### Approvals

#### Approvals


##### Approvals


CSA / VDE Gutachten mit Fertigungsüberwachung / IECEx CB Scheme / EAC / cULus Recognized / EAC

##### Ex Approvals

##### Approvals submitted


### Approval details

|   |       |       |
|---|-------|-------|
| CSA  |       |       |
|   | B     | D     |
| Nominal current I <sub>N</sub>  | 15 A  | 10 A  |
| Nominal voltage U <sub>N</sub>  | 300 V | 300 V |

|   |       |
|---|-------|
| VDE Gutachten mit Fertigungsüberwachung  |       |
| Nominal current I <sub>N</sub>  | 12 A  |
| Nominal voltage U <sub>N</sub>  | 250 V |

## Base strip - MSTB 2,5/19-G-5,08 - 1759185

### Approvals

|   |       |
|---|-------|
| IECEE CB Scheme  |       |
| Nominal current I <sub>N</sub>  | 12 A  |
| Nominal voltage U <sub>N</sub>  | 250 V |

|     |
|-----|
| EAC |
|-----|

|                                |       |       |
|--------------------------------|-------|-------|
| cULus Recognized               |       |       |
|                                | B     | D     |
| Nominal current I <sub>N</sub> | 15 A  | 15 A  |
| Nominal voltage U <sub>N</sub> | 300 V | 150 V |

|     |
|-----|
| EAC |
|-----|

### Accessories

#### Accessories

#### Coding element

Coding star - CR-MSTB - 1734401



Coding section, inserted into the recess in the header or the inverted plug, red insulating material

#### Filler plug

Accessories - MSTB-BL - 1755477



Keying cap, for forming sections, plugs onto header pin, green insulating material

#### Flange

## Base strip - MSTB 2,5/19-G-5,08 - 1759185

### Accessories

Accessories - MSTB-BF - 1759981



Mounting flange, for fixing both ends of the header onto the PCB, green insulating material, with M 2 x 14 screws and nuts.

---

### Labeled terminal marker

Marker card - SK 5,08/3,8:FORTL.ZAHLEN - 0804293



Marker card, Card, white, labeled, Horizontal: Consecutive numbers 1 - 10, 11 - 20, etc. up to 91 - (99)100, Mounting type: Adhesive, for terminal block width: 5.08 mm, Lettering field: 5.08 x 3.8 mm

---

### Marker pen

Marker pen - B-STIFT - 1051993



Marker pen, for manual labeling of unprinted Zack strips, smear-proof and waterproof, line thickness 0.5 mm

---

### Terminal marking

Marker card - SK 5,08/3,8:UNBEDRUCKT - 0805412



Marker card, Card, white, unlabeled, can be labeled with: Marker pen, Mounting type: Adhesive, for terminal block width: 5.08 mm, Lettering field: 5.08 x 3.8 mm

---

### Additional products

## Base strip - MSTB 2,5/19-G-5,08 - 1759185

### Accessories

#### Printed-circuit board connector - MSTB 2,5/19-ST-5,08 - 1757187



Plug component, Nominal current: 12 A, Rated voltage (III/2): 320 V, Number of positions: 19, Pitch: 5.08 mm, Connection method: Screw connection with tension sleeve, Color: green, Contact surface: Tin

#### Printed-circuit board connector - MSTBP 2,5/19-ST-5,08 - 1769188



Plug component, Nominal current: 12 A, Rated voltage (III/2): 320 V, Number of positions: 19, Pitch: 5.08 mm, Connection method: Screw connection with tension sleeve, Color: green, Contact surface: Tin

#### Printed-circuit board connector - FRONT-MSTB 2,5/19-ST-5,08 - 1777455



Plug component, Nominal current: 12 A, Rated voltage (III/2): 320 V, Number of positions: 19, Pitch: 5.08 mm, Connection method: Front screw connection, Color: green, Contact surface: Tin

#### Printed-circuit board connector - MVSTBR 2,5/19-ST-5,08 - 1792414



Plug component, Nominal current: 12 A, Rated voltage (III/2): 320 V, Number of positions: 19, Pitch: 5.08 mm, Connection method: Screw connection with tension sleeve, Color: green, Contact surface: Tin

#### Printed-circuit board connector - MVSTBW 2,5/19-ST-5,08 - 1792922



Plug component, Nominal current: 12 A, Rated voltage (III/2): 320 V, Number of positions: 19, Pitch: 5.08 mm, Connection method: Screw connection with tension sleeve, Color: green, Contact surface: Tin

## Base strip - MSTB 2,5/19-G-5,08 - 1759185

### Accessories

#### Printed-circuit board connector - MSTBC 2,5/19-ST-5,08 - 1808984



Plug component, Nominal current: 12 A, Rated voltage (III/2): 320 V, Number of positions: 19, Pitch: 5.08 mm, Connection method: Crimp connection, Color: green, Corresponding female crimp contacts with current [A] and conductor cross section range [mm<sup>2</sup>] data: 10A/MSTBC-MT 0,5-1,0 (3190564); 10A/MSTBC-MT 0,5-1,0 BA (3190645); 12A/MSTBC-MT 1,5-2,5 (3190551); 12A/MSTBC-MT 1,5-2,5 BA (3190658). BA = Bandkontakte

#### Printed-circuit board connector - MSTBC 2,5/19-STZ-5,08 - 1809679



Plug component, Nominal current: 12 A, Rated voltage (III/2): 320 V, Number of positions: 19, Pitch: 5.08 mm, Connection method: Crimp connection, Color: green, Corresponding female crimp contacts with current [A] and conductor cross section range [mm<sup>2</sup>] data: 10A/MSTBC-MT 0,5-1,0 (3190564); 10A/MSTBC-MT 0,5-1,0 BA (3190645); 12A/MSTBC-MT 1,5-2,5 (3190551); 12A/MSTBC-MT 1,5-2,5 BA (3190658). BA = Bandkontakte

#### Printed-circuit board connector - MSTBU 2,5/19-STD-5,08 - 1824298



Plug component, Nominal current: 12 A, Rated voltage (III/2): 320 V, Number of positions: 19, Pitch: 5.08 mm, Connection method: Screw connection with tension sleeve, Color: green, Contact surface: Tin, Mounting: Direct mounting

#### Printed-circuit board connector - MSTBU 2,5/19-ST-5,08-FL - 1824528



Plug component, Nominal current: 12 A, Rated voltage (III/2): 320 V, Number of positions: 19, Pitch: 5.08 mm, Connection method: Screw connection, Color: green, Contact surface: Tin, Mounting: Direct mounting

#### Printed-circuit board connector - SMSTB 2,5/19-ST-5,08 - 1850589



Plug component, Nominal current: 12 A, Rated voltage (III/2): 320 V, Number of positions: 19, Pitch: 5.08 mm, Connection method: Screw connection with tension sleeve, Color: green, Contact surface: Tin

## Base strip - MSTB 2,5/19-G-5,08 - 1759185

### Accessories

Printed-circuit board connector - FKCT 2,5/19-ST-5,08 - 1902288



Plug component, Nominal current: 12 A, Rated voltage (III/2): 320 V, Number of positions: 19, Pitch: 5.08 mm, Connection method: Push-in spring connection, Color: green, Contact surface: Tin

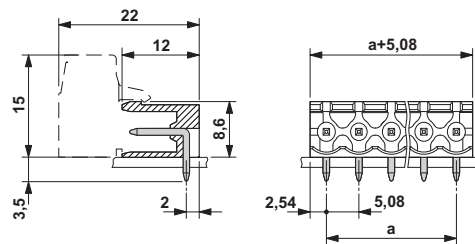
Printed-circuit board connector - FKCS 2,5/19-ST-5,08 - 1975244



Plug component, Nominal current: 12 A, Rated voltage (III/2): 320 V, Number of positions: 19, Pitch: 5.08 mm, Connection method: Push-in spring connection, Color: green, Contact surface: Tin

### Drawings

Dimensional drawing





# Mouser Electronics

Authorized Distributor

Click to View Pricing, Inventory, Delivery & Lifecycle Information:

Phoenix Contact:

1759185