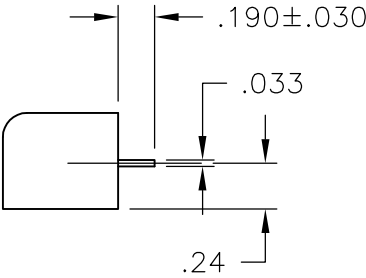
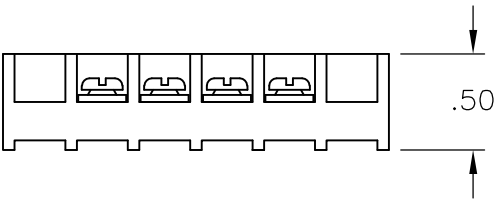
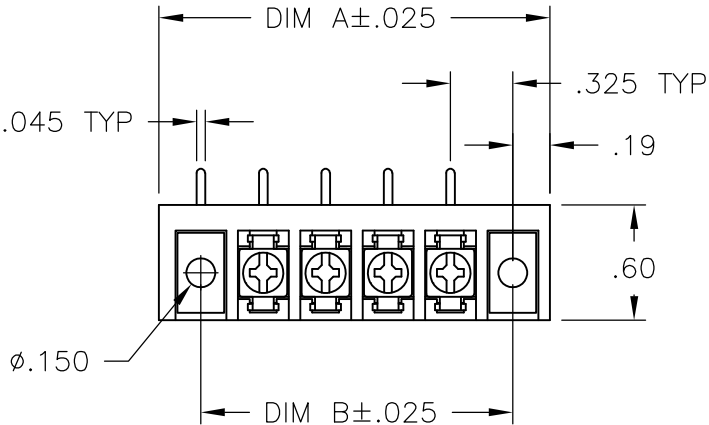


LOC	DIST	REVISIONS				
FT	O	P	LTR	DESCRIPTION	DATE	APVD
			B1	REVISED PER ECO-11-005027	11MAR11	RK HMR

MATERIALS:
HOUSING: POLYAMIDE, UL94V-0.
TERMINALS: COPPER ALLOY, TIN PLATED.
SCREWS: STEEL, ZINC PLATED.


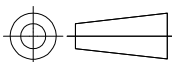
ELECTRICAL:
RATING: 20A 150V(300 LIMITED RATING)
UL & CSA.

MECHANICAL:
WIRE RANGE: 14-22 AWG
MAXIMUM TIGHTENING TORQUE: 7 IN-LB
RUNNING TORQUE: 0.5-3.5 IN-LB.



9.811	9.425	28	4PCR-28-008	2-1546940-6
9.486	9.100	27	4PCR-27-008	2-1546940-5
9.161	8.775	26	4PCR-26-008	2-1546940-4
8.836	8.450	25	4PCR-25-008	2-1546940-3
8.511	8.125	24	4PCR-24-008	2-1546940-2
8.186	7.800	23	4PCR-23-008	2-1546940-1
7.861	7.475	22	4PCR-22-008	2-1546940-0
7.536	7.150	21	4PCR-21-008	1-1546940-9
7.211	6.825	20	4PCR-20-008	1-1546940-8
6.886	6.500	19	4PCR-19-008	1-1546940-7
6.561	6.175	18	4PCR-18-008	1-1546940-6
6.236	5.850	17	4PCR-17-008	1-1546940-5
5.911	5.525	16	4PCR-16-008	1-1546940-4
5.586	5.200	15	4PCR-15-008	1-1546940-3
5.261	4.875	14	4PCR-14-008	1-1546940-2
4.936	4.550	13	4PCR-13-008	1-1546940-1
4.611	4.225	12	4PCR-12-008	1-1546940-0
4.286	3.900	11	4PCR-11-008	1546940-9
3.961	3.575	10	4PCR-10-008	1546940-8
3.636	3.250	9	4PCR-09-008	1546940-7
3.311	2.925	8	4PCR-08-008	1546940-6
2.986	2.600	7	4PCR-07-008	1546940-5
2.661	2.275	6	4PCR-06-008	1546940-4
2.336	1.950	5	4PCR-05-008	1546940-3
2.011	1.625	4	4PCR-04-008	2-1546158-1
1.686	1.300	3	4PCR-03-008	1546940-2
1.361	.975	2	4PCR-02-008	1546940-1

DIM "A"	DIM "B"	NO OF POS	CATALOG NUMBER	PART NUMBER
---------	---------	-----------	----------------	-------------

THIS DRAWING IS A CONTROLLED DOCUMENT.		DWN S. SCHLEGEL 10/20/06	 TE Connectivity						
		CHK S. YODER 10/20/06							
DIMENSIONS: INCHES		APVD S. YODER 10/20/06	NAME 4PCR-XX-008 ASSEMBLY						
		PRODUCT SPEC —							
		APPLICATION SPEC —	SIZE		CAGE CODE	DRAWING NO		RESTRICTED TO	
MATERIAL —		WEIGHT —	A3		00779		C-2-1546158-1		—
		CUSTOMER DRAWING				SCALE NTS	SHEET 1 OF 1	REV B1	

Mouser Electronics

Authorized Distributor

Click to View Pricing, Inventory, Delivery & Lifecycle Information:

[TE Connectivity:](#)

[4PCR-08-008](#)