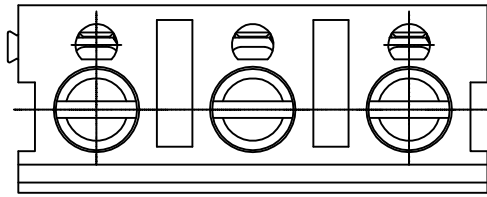
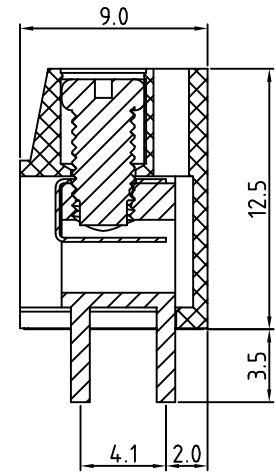
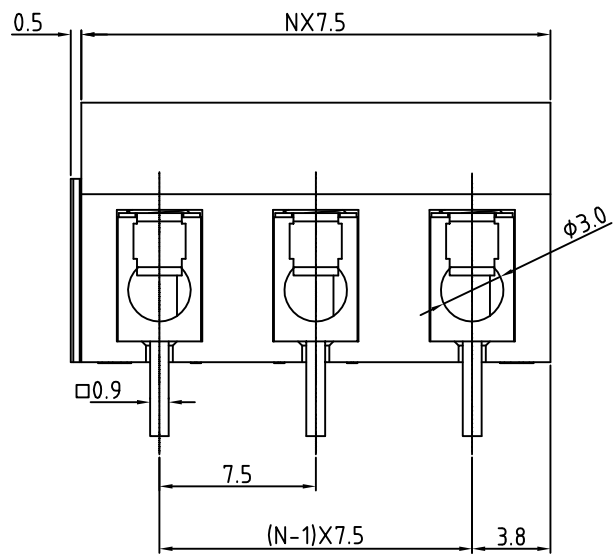


SIGN	DATE	DESCRIPTION	APPROVER
THIS IS CAD DRAWING, DO NOT REVISE MANUALLY!!!			



- Material**
- Terminal body
 - (metal housing): Brass(CuZn)
 - Terminal screw: Steel Zinc plating "-" slot type
 - Wire guard: Stainless steel
 - Surface of solder tail: Tin plated
 - Insulator (housing): Thermoplastic (UL94V-0)

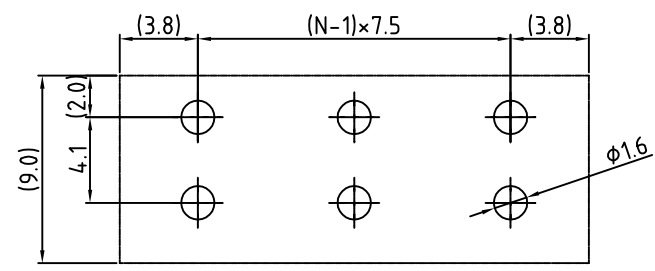
- Electrical cULus**
- Voltage rating: 300VAC
 - Current rating: 15A
 - Wire range:
 - Solid wire(AWG): 14-22
 - Stranded wire(AWG): 14-22
 - Torque(Lb-in): 3.5
 - Screw: M3
 - Wire strip length: 6-7mm
 - Withstanding Voltage: 2KV
 - Operating temperature: -30°C to +105°C
 - Soldering temperature: 250°C±10°C/5 Sec
 - Safety approval: cULus
- RoHS Compliant



PART NUMBER: **OSTVAXX2160**

↓	↓	↓
No. of Poles	COLOR	
02 2 Poles	0: Black	
03 3 Poles	5: Green	
...	6: Blue (Standard)	
12 12 Poles	8: Grey	

N=Number of poles
P.C.B. LAYOUT



THESE DRAWINGS AND SPECIFICATIONS ARE THE PROPERTY OF ON-SHORE TECHNOLOGY, INC. AND SHALL NOT BE REPRODUCED, COPIED OR USED IN ANY MANNER WITHOUT THE PRIOR WRITTEN CONSENT OF ON-SHORE TECHNOLOGY, INC.



TITLE		OSTVA -7.5mm Series		DWG NO.		OSTVAXX2160.DWG	
PART NO.		OSTVAXX2160		CUST NO.			
APPROVED	CHECKED	DESIGNED	DRAWN				
Shi Jun 2006.10.19	Shi Jun 2006.10.19	xionghaitao 2006.10.19	xionghaitao 2006.10.19				
				UNIT: mm		Tolerance	
				SCALE: NONE		X.X ±0.50	
				SHEET: 01/01		X.XX ±0.30	
				REV: D		X° ±0.10	
						X° ±1°	