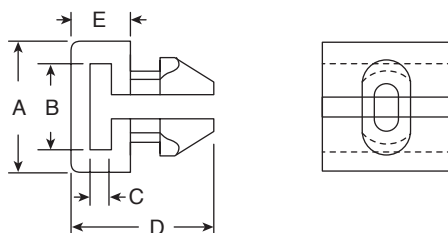


Dimensions: in.



Clip Mounts are designed to securely connect a tie to a predrilled hole. Clip Mounts can be used in applications where the back of the panel is inaccessible.

| Part Number | Description     | Dimensions: in. |      |      |      |      |      | Hole Size | Panel Thickness |
|-------------|-----------------|-----------------|------|------|------|------|------|-----------|-----------------|
|             |                 | A               | B    | C    | D    | E    | F    |           |                 |
| 561-TA00090 | .187 Clip Mount | .320            | .220 | .050 | .350 | .150 | .320 | 0.187     | 0.062           |
| 561-N3600   | .187 Clip Mount | .380            | .220 | .065 | .400 | .190 | .320 | 0.187     | 0.062           |
| 561-N3605   | .250 Clip Mount | .380            | .220 | .065 | .400 | .190 | .320 | 0.25      | 0.062           |

# Mouser Electronics

Authorized Distributor

Click to View Pricing, Inventory, Delivery & Lifecycle Information:

[Eagle Plastic Devices:](#)

[561-N3600](#) [561-N3605](#) [561-TA00090](#)