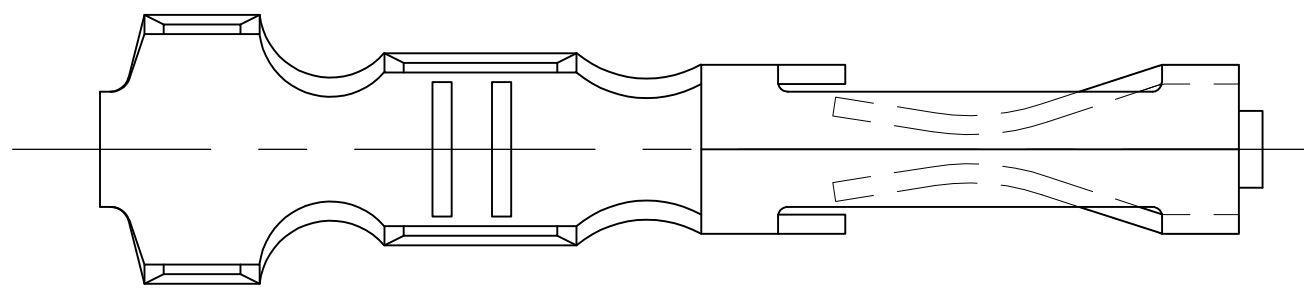


THIS DRAWING IS UNPUBLISHED. RELEASED FOR PUBLICATION
 © COPYRIGHT - By - ALL RIGHTS RESERVED.

LOC	DIST	REVISIONS				
P	LTR	DESCRIPTION	DATE	DWN	APVD	
	00	A1	PART REVISION ADDITION IN THE TABLE	23JUN2015	NV	PS



- 1 LOOSE PIECE TERMINAL MUST MEET ALL APPLICABLE STRIP SPECIFICATIONS IN ADDITION TO THOSE SHOWN.
- 2 PRE-PLATED MATERIAL: (.000050 NICKEL OVER ENTIRE TERMINAL, .000015 GOLD IN CONTACT AREA), TO BE PLATED WITH GOLD FLASH PER 112-33-1 OVER ENTIRE TERMINAL.
- 3 PRE-PLATED MATERIAL: (.000050 NICKEL OVER ENTIRE TERMINAL, .000030 GOLD IN CONTACT AREA), TO BE PLATED WITH GOLD FLASH PER 112-33-1 OVER ENTIRE TERMINAL.
- 4 LUBRICATE PER 118-25007.
- 5 PREPLATED STOCK: .000016 MIN TIN PER 112-20-1 (REF ONLY).
- 6 PRE-PLATED MATERIAL: (.000050 NICKEL OVER ENTIRE TERMINAL, .000015 GOLD ON CONTACT AREA), TO BE PLATED .000050-.000100 BRIGHT TIN-LEAD PER 112-26-1, IN TERMINATION AREA
- 7 PRE-PLATED MATERIAL: (.000050 NICKEL OVER ENTIRE TERMINAL, .000030 GOLD ON CONTACT AREA), TO BE PLATED .000050-.000100 BRIGHT TIN-LEAD PER 112-26-1, IN TERMINATION AREA

.010 MAX .580 .010 MAX

OBSOLETE	7	102102-7	102106-5	H
OBSOLETE	6	102102-6	102106-4	H
OBSOLETE	4 5	102102-5	102106-3	V
	3	102102-2	102106-2	V
OBSOLETE	2	102102-1	102106-1	H
	FINISH	MAKE FROM STRIP PART NO.	PART NUMBER	REV

THIS DRAWING IS A CONTROLLED DOCUMENT.		DWN KIRAN HOLAL 11OCT2013	STE TE Connectivity		
DIMENSIONS: INCHES		CHK JOSEPH OLSON 11OCT2013			
TOLERANCES UNLESS OTHERWISE SPECIFIED:		APVD JOSEPH OLSON 11OCT2013	NAME MOD I RECP LP		
0 PLC ± -		PRODUCT SPEC	SIZE		
1 PLC ± -		APPLICATION SPEC	CAGE CODE		
2 PLC ± -		WEIGHT	DRAWING NO		
3 PLC ± .005		CUSTOMER DRAWING	RESTRICTED TO		
4 PLC ± -			SCALE		
ANGLES ± -			SHEET		
FINISH			REV		
			10:1		
			1 OF 1		
			A1		

Mouser Electronics

Authorized Distributor

Click to View Pricing, Inventory, Delivery & Lifecycle Information:

[TE Connectivity:](#)

[102106-2](#)