

TECHNICAL CHARACTERISTICS :

Female screw locks: brass, tin
Compensating washer: steel , tin
Nuts : steel , tin
Corrosion resistance : 24 hours .

NOTE: RoHS INFORMATIONS

- The "LF" products meet European union Directives and other country regulations as described in GS-22-008.
- Plating Sn (pure bright) over copper
- Packaging spec: see GS-14-920

Core range	
PART NUMBER	863001060TLF PACKAGING: per 100 pieces



Copyright FCI.

European Views

www.fciconnect.com		surface ISO 1302 <input checked="" type="checkbox"/>	tolerance std ISO 406 ISO 1101	projection 	mm
TOLERANCES UNLESS OTHERWISE SPECIFIED					
Dr	JOUBERT	1996/01/28	ANGULAR	0.X	± 0.1
Eng	JOUBERT	1996/01/28	LINEAR	0.XX	± 0.1
Chr	ABHILASH	2011/01/25	0.XX* ± 2	0.XXX	± 0.1
Appr	SUDHIR	2011/01/25	Product family		D-SUB
				size	A3
				ECN	111-0022
				Spec ref	-
title			FEMALE SCREW LOCK		Rev.
D SUB ACCESSORIES			dwg no		C01-8655-0697-1
catalog no			-		J
				CUSTOMER	sheet 1 of 2

rev	ecn no	dr	date
C	-	SBA	2003/04/15
D	LS05-0026	LMA	2005/02/09
E	LS06-0097	LGO	2006/07/28
F	LS08-0192	MPE	2008/09/12
G	LS09-0006	PCR	2009/01/08
H	LS09-0063	PCR	2009/03/25
J	111-0022	AMR	2011/01/25



Copyright FCI.

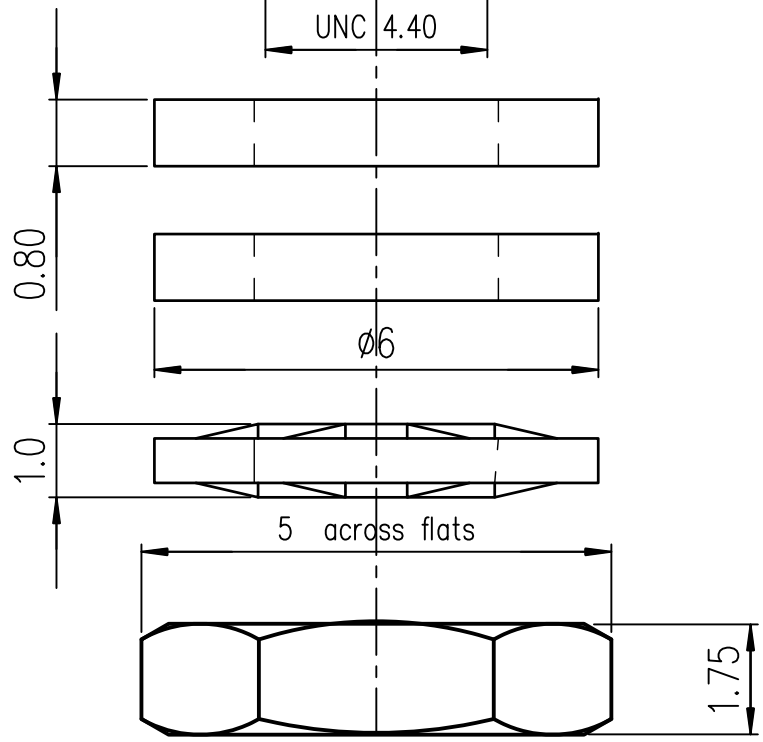
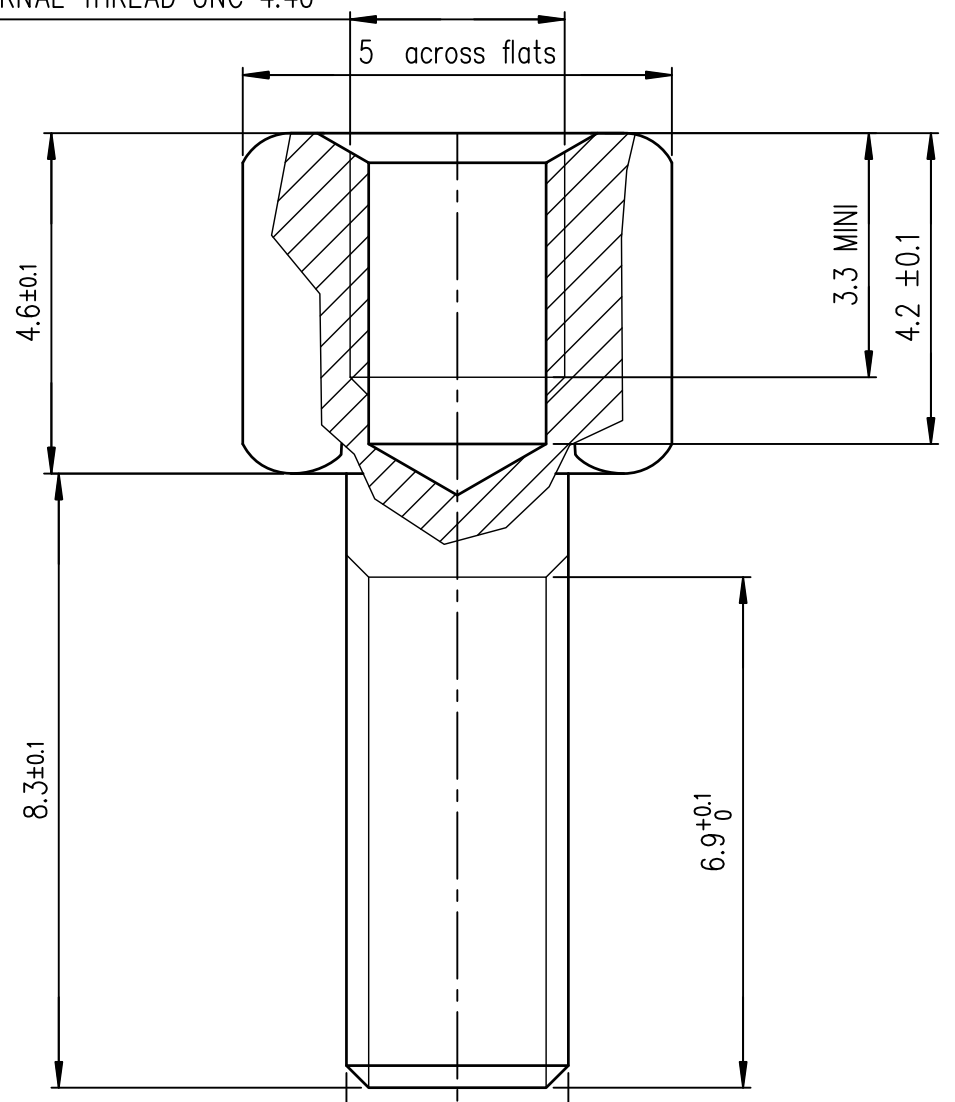
D

C

B

A

INTERNAL THREAD UNC 4.40



TECHNICAL CHARACTERISTICS :

- Female screw locks: brass, tin
- Compensating washer: steel , tin
- Nuts : steel , tin
- Corrosion resistance : 24 hours .

NOTE: RoHS INFORMATIONS

- The "LF" products meet European union Directives and other country regulations as described in GS-22-008.
- Plating Sn (pure bright) over copper
- Packaging spec: see GS-14-920

Core range

LEAD FREE NUMBER 86552029TLF PACKAGING: per 1000 pieces

European Views

rev	ecn no	dr	date
C	-	SBA	2003/04/15
D	LS05-0026	LMA	2005/02/09
E	LS06-0097	LGO	2006/07/28
F	LS09-0006	PCR	2009/01/08
G	LS09-0063	PCR	2009/03/25
H	I11-0022	AMR	2011/01/25
-	-	-	-

www.fciconnect.com		surface ISO 1302 ✓	tolerance std ISO 406 ISO 1101	projection mm
TOLERANCES UNLESS OTHERWISE SPECIFIED				
Dr	JOUBERT	1996/01/26	ANGULAR	0.X ±0.1
Eng	JOUBERT	1996/01/26	LINEAR	0.XX ±0.1
Chr	ABHILASH	2011/01/25	0.XX ±2	0.XXX ±0.1
Appr	SUDHIR	2011/01/25	Product family	D-SUB
size A3				Scale 10
ECN I11-0022				Spec ref -
title FEMALE SCREW LOCK D SUB ACCESSORIES		dwg no C01-8655-0697-2		Rev. H
catalog no		CUSTOMER sheet 2 of 2		

Mouser Electronics

Authorized Distributor

Click to View Pricing, Inventory, Delivery & Lifecycle Information:

[FCI / Amphenol:](#)

[863001060TLF](#)