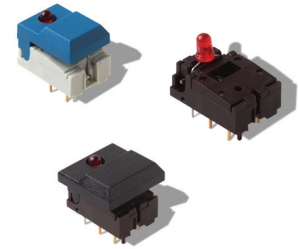


DIGITAST

Typical Applications

- **Medical**
- **Instrumentation**
- **Industrial electronics**
- **Audio electronics**



Electrical

SWITCHING POWER MAX.: 240 mW DC
SWITCHING VOLTAGE MAX.: 24 V DC
SWITCHING CURRENT MAX.: 10 mA DC
CARRYING CURRENT AT 20°C (push-push version): 100 mA
DIELECTRIC STRENGTH (50 Hz, 1 min): 500 V
OPERATING LIFE with or without max. switching power
 Momentary: $\geq 5 \times 10^5$ operations
 Push-push: $\geq 5 \times 10^5$ operations
CONTACT RESISTANCE: Initial $\leq 50 \text{ m}\Omega$
 After 5×10^6 operations: $\leq 100 \text{ m}\Omega$
INSULATION RESISTANCE: $\geq 10^{10} \Omega$
CAPACITANCE at $f = 10 \text{ kHz}$: $\leq 0.8 \text{ pF}$
BOUNCE TIME: $\leq 2.5 \text{ ms}$
 Operating speed 400 mm/s (15.75/s)

Environmental

OPERATING TEMPERATURE: -25°C to 85°C.

SOLDERABILITY:
Wave soldering, compatible with lead free soldering profile
Hand soldering, 350°C for 3 seconds

Environmental

Our easy build-a-switch concept allows you to mix and match options to create the switch you need. To order, select desired option from each category and place it in the appropriate box. **Some of the configurations may not be available or could require some development.**

OPERATING TEMPERATURE: -25°C to 85°C.



		K					
--	--	---	--	--	--	--	--



- LED Holes** _____
- NONE** No LED holes
- L** 1 LED hole
- 2L** 2 LED holes

- Button Color****
- | | |
|-----------|-------|
| BK | Black |
| GY | Gray |
| WH | White |
| RD | Red |
| BU | Blue |

- Latching**
None For use with momentary switch
EE With “EE” staple for latching

** Additional button colors available by request

*** Additional LED colors available by request including Bi color configurations

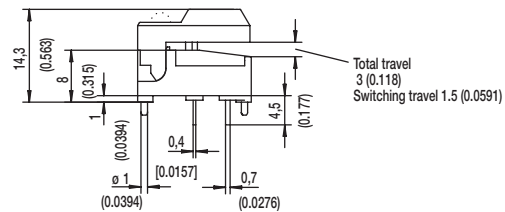
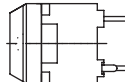
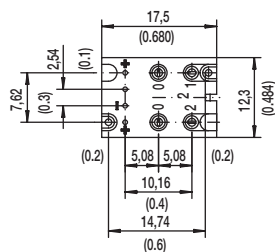
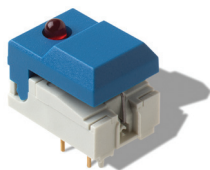
DIGITAST

Microminiature SPDT, Key Switches

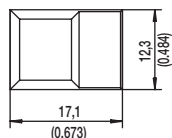
DESIGNATION



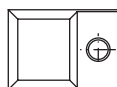
SER NARROW BUTTON



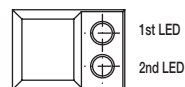
SER



SERL

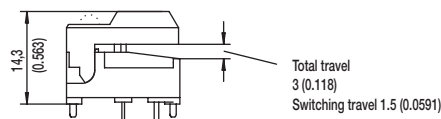
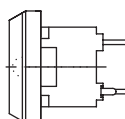
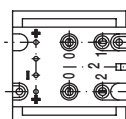
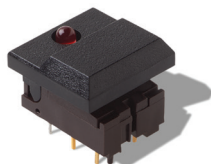


SER2L

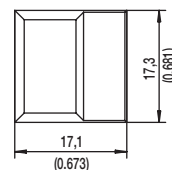


1st LED
2nd LED

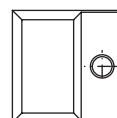
SET WIDE BUTTON



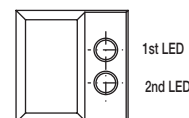
SET



SETL

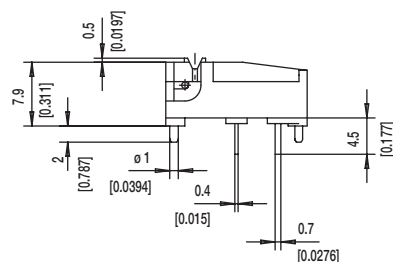
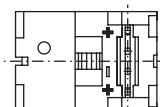
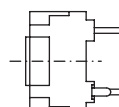
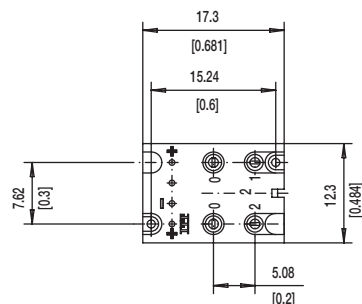


SET2L



1st LED
2nd LED

SERU NO BUTTON

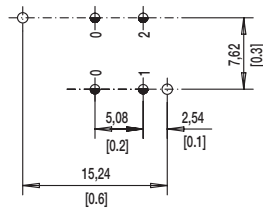


Key Switches

DIGITAST Microminiature SPDT, Key Switches

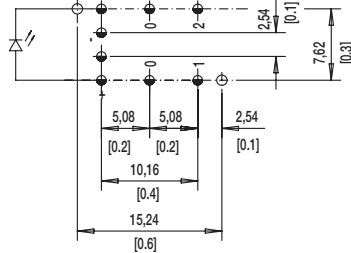
LED

NONE NO LED

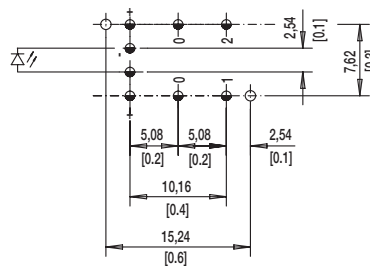


L 1 LEDS

7.62 mm Spacing (TYP No. America)

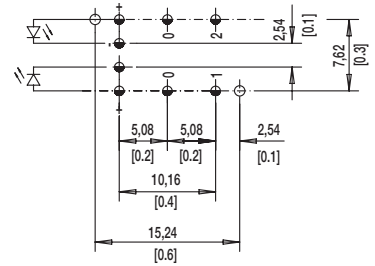


NARROW SPACING (TYP EUROPE)



TOP VIEW OF PCB

2L 2 LEDS



⌀ 1.0±0.1 (0.0394±0.00349)

⌀ 1.1±0.05 (0.0433±0.00197)

BUTTON COLOR

BK BLACK

GY GRAY

Other button colors available by request [red (RD), green (GN), white (WH), yellow (YE), blue (BU), orange (OG)].

LED COLOR

OPTION CODE	COLOR
NONE	Models without LED
RD	Red
GN	Green
YE	Yellow

CONTACT MATERIAL

OPTION CODE	MATERIAL
AU	Gold

FUNCTION

OPTION CODE	COLOR	SCHEMATIC
OA	Momentary	
EE	Push-Push	



First Angle
Projection

Mouser Electronics

Authorized Distributor

Click to View Pricing, Inventory, Delivery & Lifecycle Information:

C&K Switches:

[SRKL BK](#) [STK2LGY](#) [SRK2LBK](#) [SRK2LGY](#) [SRKLBK](#) [719-0102-000](#)