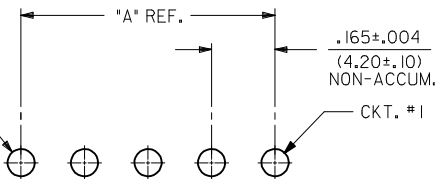


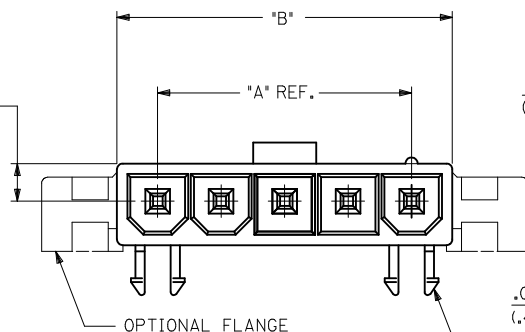
.071±.002  
(1.80±.05) DIA.



RECOMMENDED HOLE LAYOUT

RIB INDICATES CIRCUIT #1.

.098  
(2.50) REF.

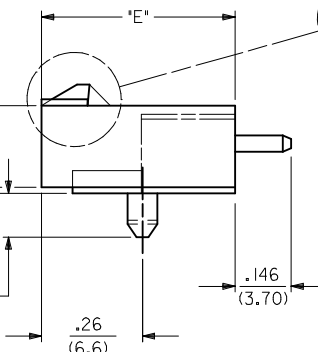


OPTIONAL PEG

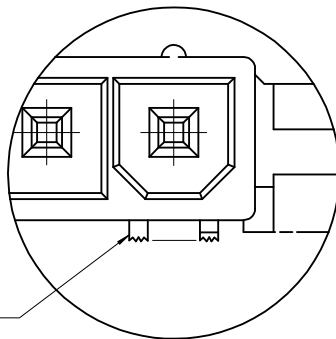
.21  
(5.4)

.016  
(.40)

.11  
(2.9)



OPTIONAL  
PASSIVE LOCK



DETAIL A

SHOWING PEG REMOVED OPTION  
(TYPICAL)

#### NOTES:

##### 1) HOUSING MATERIAL:

"A" - NYLON 6/6, U.L. 94V-2,  
COLOR: NATURAL.  
"B" - NYLON 6/6, U.L. 94V-0,  
COLOR: NATURAL.

TERMINAL MATERIAL: BRASS, ALLOY

##### 2) TERMINAL PLATING:

"A" - .000100/(0.00254) MIN. MATTE TIN OVER  
.000050/(0.00127) MIN. NICKEL  
"B" - .000030/(0.00076) MIN. SELECT GOLD AND  
.000100/(0.00254) MIN. SELECT MATTE TIN  
OVER .000050/(0.00127) MIN. NICKEL OVERALL

3) PRODUCT SPECIFICATION: PS-5556-001

4) PACKAGING SPECIFICATION: PK-43242-001

5) PART MATES WITH MINI-FIT JR. RECEPTACLE #5557.

##### 6) MOUNTING OPTIONS:

"1" - PEGS  
"2" - FLANGES  
"3" - PEGS REMOVED

##### 7) LOCK RAMP STYLES:

"1" - POSITIVE LOCK  
"2" - PASSIVE LOCK

8) ITEM NUMBERS PRECEDED BY AN "X" ARE NOT AVAILABLE.

9) DISCOLORATION IN THE BANDOLIER CARRIER AREA OF THE  
PIN IS INHERENT TO THE PLATING PROCESS AND IS DUE TO  
THE MASKING EFFECT OF THE CARRIER. THIS DISCOLORATION  
IS IN A NON-FUNCTIONAL AREA OF THE PIN AND WILL NOT  
AFFECT THE PERFORMANCE OF THE HEADER ASSEMBLY.

10) PART CONFORMS TO CLASS "B" REQUIREMENTS OF COSMETIC  
SPECIFICATION PS-45499-002.

ADD PK TO NOTE 4

EC NO: UCP2013-0433

DRW: NGUYEN

CHKD: J.BELL

APPR: FSMITH

REV

DESCRIPTION

QUALITY SYMBOLS

GENERAL TOLERANCES (UNLESS SPECIFIED)

mm INCH

4 PLACES ± .005 ± .005

3 PLACES ± .005 ± .015

2 PLACES ± .005 ± .005

1 PLACE ± .005 ± .005

ANGULAR ± 1/2°

DRAFT WHERE APPLICABLE

MUST REMAIN WITHIN DIMENSIONS

DRAWN BY

DATE

CHECKED BY

DATE

APPROVED BY

DATE

FSMITH

2012/02/02

MATERIAL NO.

DOCUMENT NO.

SHEET NO.

1 OF 2

THIS DRAWING CONTAINS INFORMATION THAT IS PROPRIETARY TO MOLEX INCORPORATED AND SHOULD NOT BE USED WITHOUT WRITTEN PERMISSION

DIMENSION STYLE

IN/MM

SCALE

4:1

DESIGN UNITS

METRIC

THIRD ANGLE PROJECTION

TITLE

SELECTIVELY LOADED

SINGLE ROW VERT HDR ASSY

MINI-FIT JR

MOLEX INCORPORATED

SDA-43242-\*



# Mouser Electronics

Authorized Distributor

Click to View Pricing, Inventory, Delivery & Lifecycle Information:

Molex:

43242-0005