

**PLEASE CHECK WWW.MOLEX.COM FOR LATEST PART INFORMATION**

**Part Number:** [0014567182](#)  
**Status:** **Active**  
**Overview:** [SL Modular Connectors](#)  
**Description:** 2.54mm Pitch SL Insulation Displacement Connector Assembly, Female, Single Row, Version G, Positive Lock, Wire Size 22 AWG, 3.81µm Tin/Lead (SnPb), 18 Circuits

**Documents:**

<a href="#">3D Model</a>	<a href="#">Product Specification TS-70541-001-001 (PDF)</a>
<a href="#">Drawing (PDF)</a>	<a href="#">Packaging Specification PK-70873-0001-001 (PDF)</a>
<a href="#">Product Specification PS-70400-001 (PDF)</a>	<a href="#">RoHS Certificate of Compliance (PDF)</a>

**Agency Certification**

CSA	LR19980
UL	E29179

**General**

Product Family	Ribbon Cable / Wire Trap Connectors
Series	<a href="#">70400</a>
Comments	Terminals Preloaded
Component Type	Housing
Glow-Wire Capable	No
Overview	<a href="#">SL Modular Connectors</a>
Product Name	SL
UPC	800754993623

**Physical**

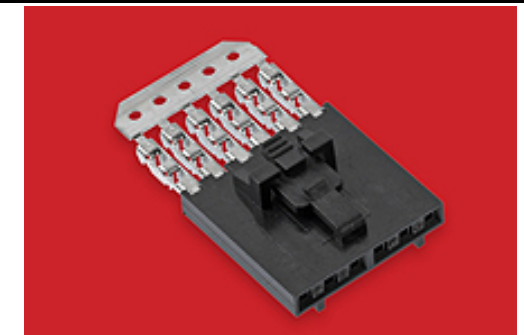
Circuits (Loaded)	18
Color - Resin	Black
Durability (mating cycles max)	25
Entry Angle	Vertical
Flammability	94V-0
Lock to Mating Part	Yes
Material - Metal	Phosphor Bronze
Material - Plating Mating	Tin
Material - Plating Termination	Tin
Material - Resin	Polyester Alloy
Number of Rows	1
PCB Retention	None
Packaging Type	Tube
Pitch - Mating Interface	2.54mm
Plating min - Mating	3.810µm
Plating min - Termination	1.905µm
Polarized to Mating Part	Yes
Stackable	Yes
Surface Mount Compatible (SMC)	N/A
Temperature Range - Operating	-40° to +105°C
Termination Interface: Style	IDT or Pierce
Wire Insulation Diameter	1.35mm max.
Wire Size AWG	22
Wire/Cable Type	Discrete Wire, Ribbon Cable

**Electrical**

Current - Maximum per Contact	3.0A
Voltage - Maximum	250V

**Material Info**

Engineering Number	70400-3156
--------------------	------------



Series image - Reference only

**EU ELV**

**Not Reviewed**

**EU RoHS**

**Not Reviewed**

**REACH SVHC**

Not Reviewed

**Halogen-Free**

**Status**

**Not Reviewed**

For more information, please visit [Contact US](#)

China ROHS

Not Reviewed

ELV

Not Reviewed

RoHS Phthalates

Not Reviewed

**Search Parts in this Series**

[70400](#) Series

**Mates With**

Single Row Housing [70018](#) , [70107](#) Version A, [70107](#) Version B, [70543](#) , [70545](#) , [70553](#) , [70555](#)

**Use With**

[7307](#) Tinned 28AWG, [7767](#) Topcoat 28AWG, [24241](#) Tinned 26AWG, [8996](#) Topcoat 26AWG, [24226](#) Tinned 24AWG, [8997](#) Topcoat 24AWG, [24369](#) High Flex 26AWG, [24389](#) High Flex 24AWG

**Application Tooling | FAQ**

*Tooling specifications and manuals are found by selecting the products below. Crimp Height Specifications are then contained in the Application Tooling Specification document.*

**Global**

**Description**

**Product #**

IDT - Semi-automatic [11200949](#)

- Bench-Top

Terminator

**Reference - Drawing Numbers**

Packaging Specification

Product Specification

Sales Drawing

PK-70873-0001-001

PS-70400-001, TS-70541-001-001

SDA-70400-3140-3163

IDT Discrete	<u>621000700</u>
Handtool Module	
Ribbon Cable Tool	<u>622016600</u>
Kit, Press Not	
Included	
Hawk Ribbon Cable	<u>623003000</u>
Terminator without	
Break-off	
Hawk Semi-	<u>623003100</u>
Automatic Discrete	
Wire Terminator	
Hawk Semi-	<u>623004900</u>
Automatic Discrete	
Wire Terminator	
for Rebuilt CE	
Approved*	
Hawk Flat Flex Cable	<u>623005200</u>
Terminator with	
Break-off	
Hawk Ribbon Cable	<u>623005300</u>
Terminator with	
Break-off	

This document was generated on 11/27/2018

**PLEASE CHECK [WWW.MOLEX.COM](http://WWW.MOLEX.COM) FOR LATEST PART INFORMATION**

# Mouser Electronics

Authorized Distributor

Click to View Pricing, Inventory, Delivery & Lifecycle Information:

[Molex:](#)

[14-56-7182](#)